



EPaCCS Outcome Report

NHS Leeds CCG

2020/21 Report (Q2) - CCG Level

Data Source : SystmOne and EMIS

Data Provided by : Health Care Hub (Leeds), Leeds Community Healthcare, St Gemma's Hospice, Sue Ryder
 Wheatfields Hospice and Data Quality Team (NHS Leeds CCG)

Report Compiled by : Business Intelligence Team, NHS Leeds CCG

	Page
Summary	3
Part 1 - GP Practice EPaCCS Data	
C1.1a Patients who died and were included on EPaCCS - NHS Leeds CCG (Part 1 of 2)	4
C1.1b Patients who died and were included on EPaCCS - NHS Leeds CCG (Part 2 of 2)	5
C1.2a Percentage of Patients on EPaCCS who have achieved Preferred Place of Death - NHS Leeds CCG (Part 1 of 2)	6
C1.2b Percentage of Patients on EPaCCS who have achieved Preferred Place of Death - NHS Leeds CCG (Part 2 of 2)	7
Part 2 - Leeds CCGs EPaCCS Data	
C2.1 Total patient deaths in and out of hospital and total deaths by CCG	8
C2.2 Patients with a Cancer Diagnosis recorded at any point in life (2020/21 Report (Q2) compared with previous year)	8
C2.3 Patients who died and were included on EPaCCS	8
C2.4 Preferred place of death recorded by CCG	9
C2.5 Actual place of death recorded by CCG	9
C2.6 Preferred Place of Death Achieved (First Choice) by Leeds CCG EPaCCS patients	10
C2.7 Duration of time (in weeks) the patients were on EPaCCS (Leeds City wide)	11
C2.8a Unplanned hospital usage (A&E and Non-Elective Admissions) by EPaCCS Patients in the last 90 days of their life.	12
C2.8b Reasons for Unplanned hospital usage (Non-Elective Admissions) by EPaCCS Patients in the last 90 days of their life.	13
C2.9 EPaCCS patients who have a ReSPECT (Recommended Summary Plan for Emergency Care and Treatment) Code recorded on the system.	14
C2.10 Ethnicity Breakdown of EPaCCS patients	14

EPaCCS Outcome Report

The Electronic Palliative Care Coordination System (EPaCCS) is an electronic record that supports advance care planning conversations and improves the coordination of care for people approaching the end of life.

It provides a summary of key recommendations, preferences and information essential to the high quality care for patients with palliative care needs and those choosing to plan ahead, irrespective of prognosis. Local and national data shows that when patients are given the opportunity to discuss and share their preferences they are more likely to achieve their end of life care goals.

This is a 2020-21 (Q1-Q2) Leeds EPaCCS report, combining SystemOne and EMIS data for patients registered from all the practices across Leeds.

To ensure a comprehensive view of advance care planning it collates EPaCCS data entered by all relevant care providers: Leeds Community Healthcare community services, hospice services, community palliative care teams in addition to primary care.

These EPaCCS reports have been produced to enable you to reflect on end of life care in your practice.

Key findings of the 2020/21 Report (Q2) report are:

- ◆ 52% of adults who died in Leeds had an EPaCCS record compared to 49% the previous year.
- ◆ 77% achieved their preferred place of death this year compared to 79% last year; with 69% dying outside of hospital compared to 68% last year.
- ◆ The proportion of patients whose EPaCCS record was started more than 3 months before they died is at 53% at par when compared to 52% the previous year.
- ◆ The proportion of patients without an actual place of death recorded has increased to 15% from 12% last year.
- ◆ 133 out of 663 patients who died this quarter had a RESPECT Code recorded on the system.
- ◆ Deaths at home has significantly increased this year
 - 2019/20: Q1 161 deaths (23%), Q2 166 deaths (24%)
 - 2020/21: Q1 297 deaths (28%), Q2 225 deaths (34%)

This report covers a period of unprecedented demand across the health and social care environment: particularly given the impact of **COVID-19** on the system. It is a considerable achievement the proportion of patients being supported in their preferred place has been maintained whilst the overall proportion of people with an EPaCCS record has increased. This marks a sustained improvement on 2016-2017 when 33% of adults who died had an EPaCCS record.

The findings show that a greater proportion of people are being given opportunities to discuss, document and share their care preferences at an earlier stage and demonstrate improved data quality.

Part 1 - GP Practice EPaCCS Data 2020/21 Report (Q2)

NHS Leeds CCG

C1.1a Patients who died and were included on EPaCCS - NHS Leeds CCG (Part 1 of 2)

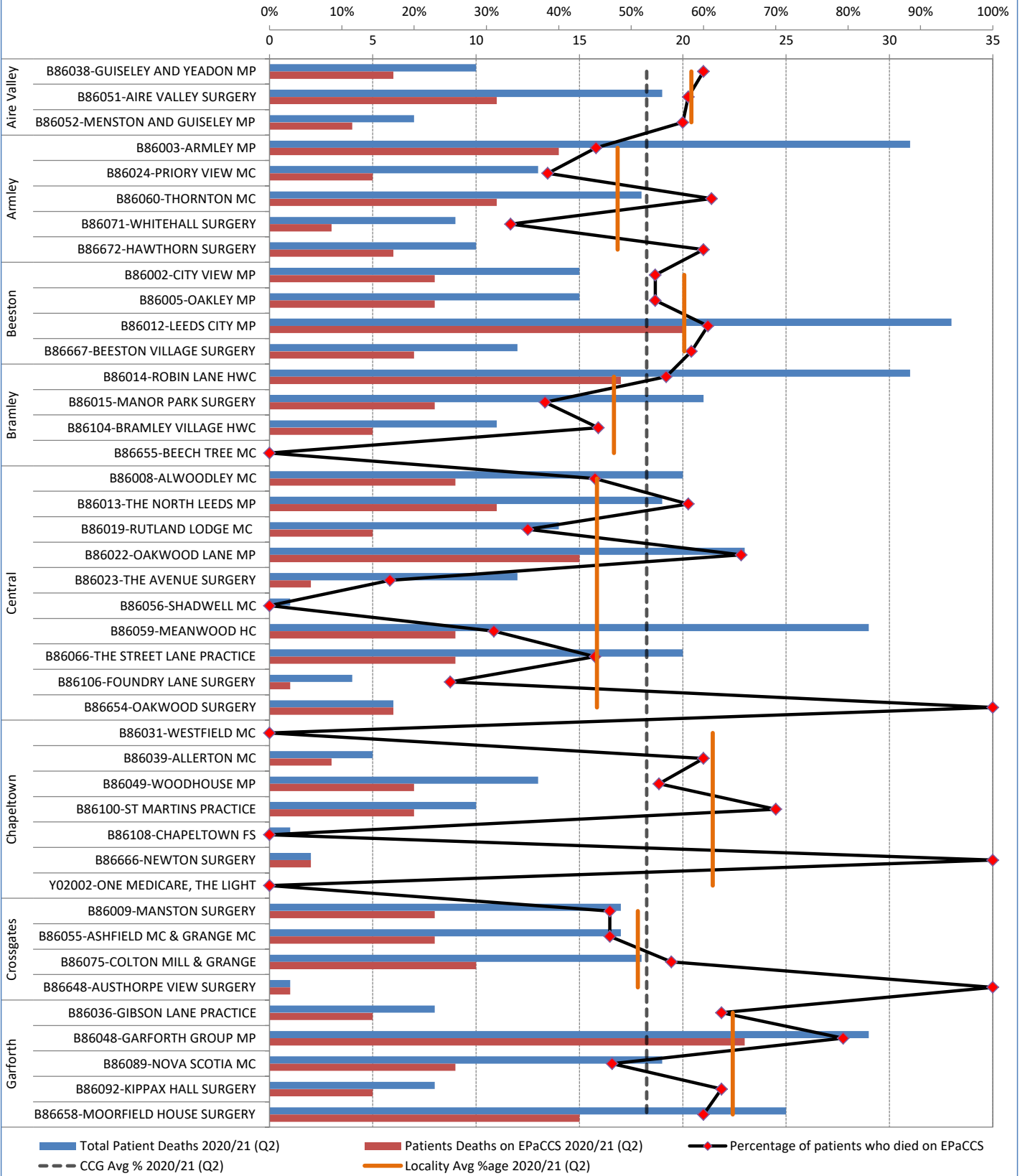
a. Number of All patient deaths?

b. Number of patients deaths on EPaCCS?

c. % of patient deaths on EPaCCS?

	Q1	Q2	Q3	Q4	Total
a. Number of All patient deaths?	1995	1271			3266
b. Number of patients deaths on EPaCCS?	1069	663			1732
c. % of patient deaths on EPaCCS?	54%	52%			53%

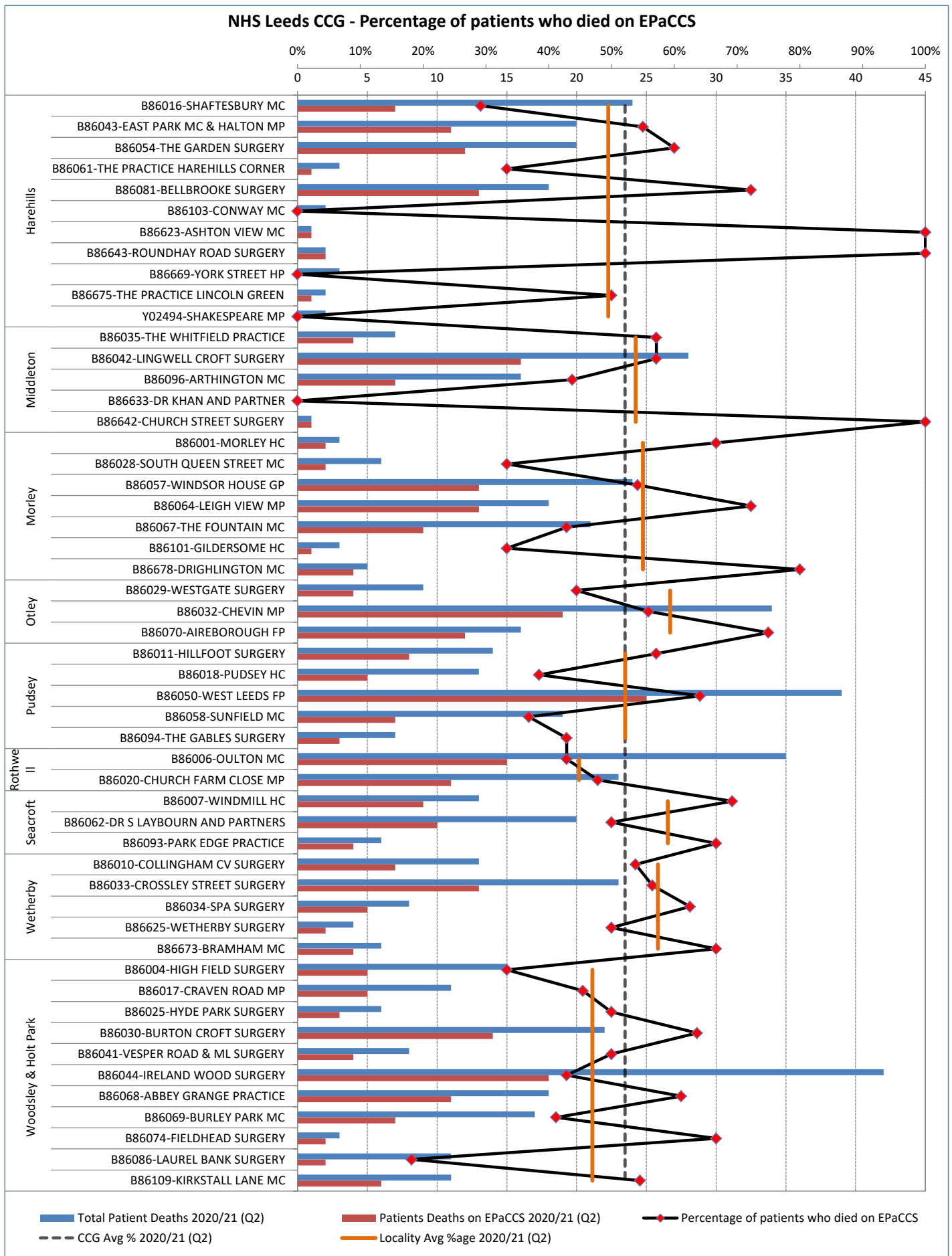
NHS Leeds CCG - Percentage of patients who died on EPaCCS



Part 1 - GP Practice EPaCCS Data
2020/21 Report (Q2)

NHS Leeds CCG

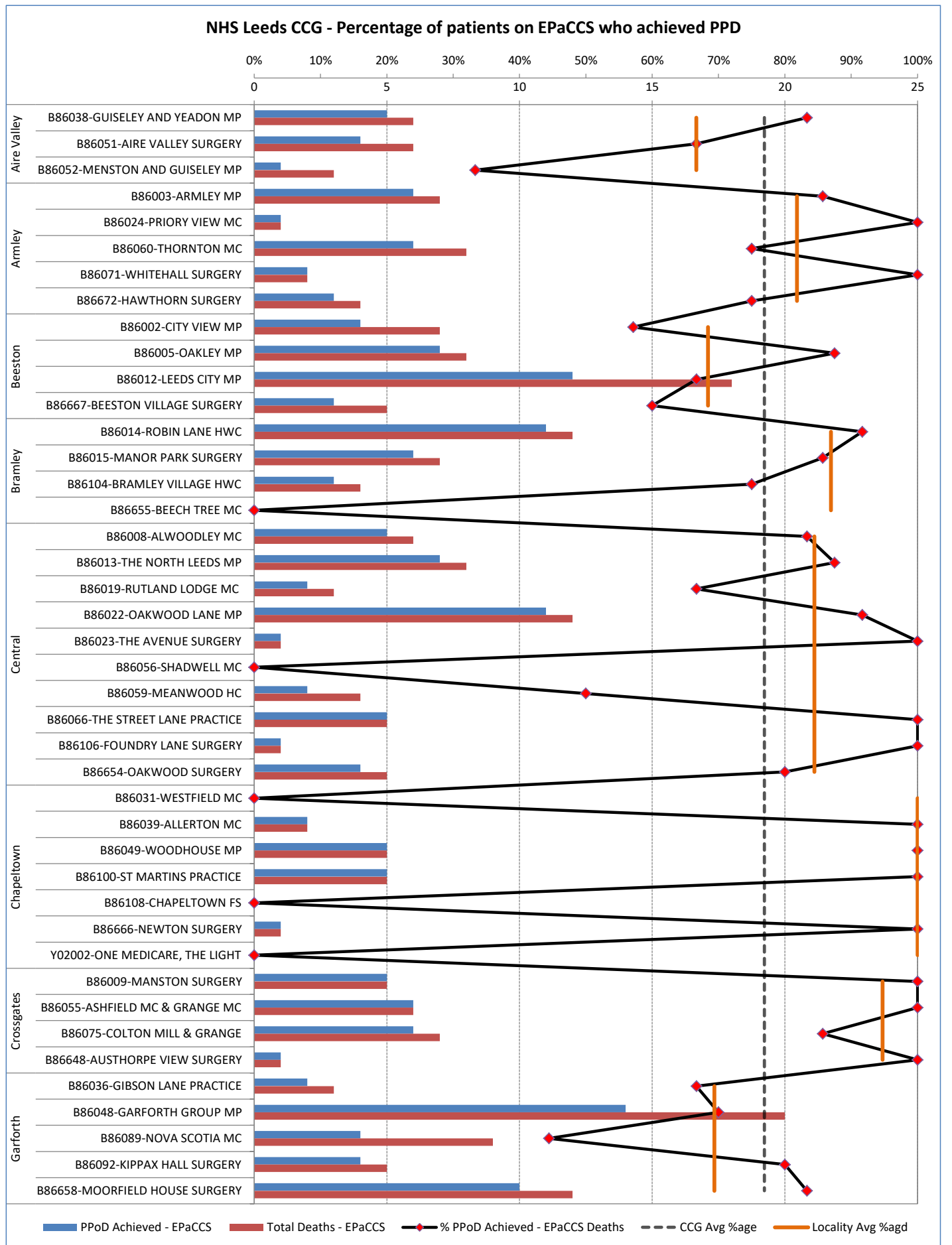
C1.1b Patients who died and were included on EPaCCS - NHS Leeds CCG (Part 2 of 2)



Part 1 - GP Practice EPaCCS Data
2020/21 Report (Q2)

NHS Leeds CCG

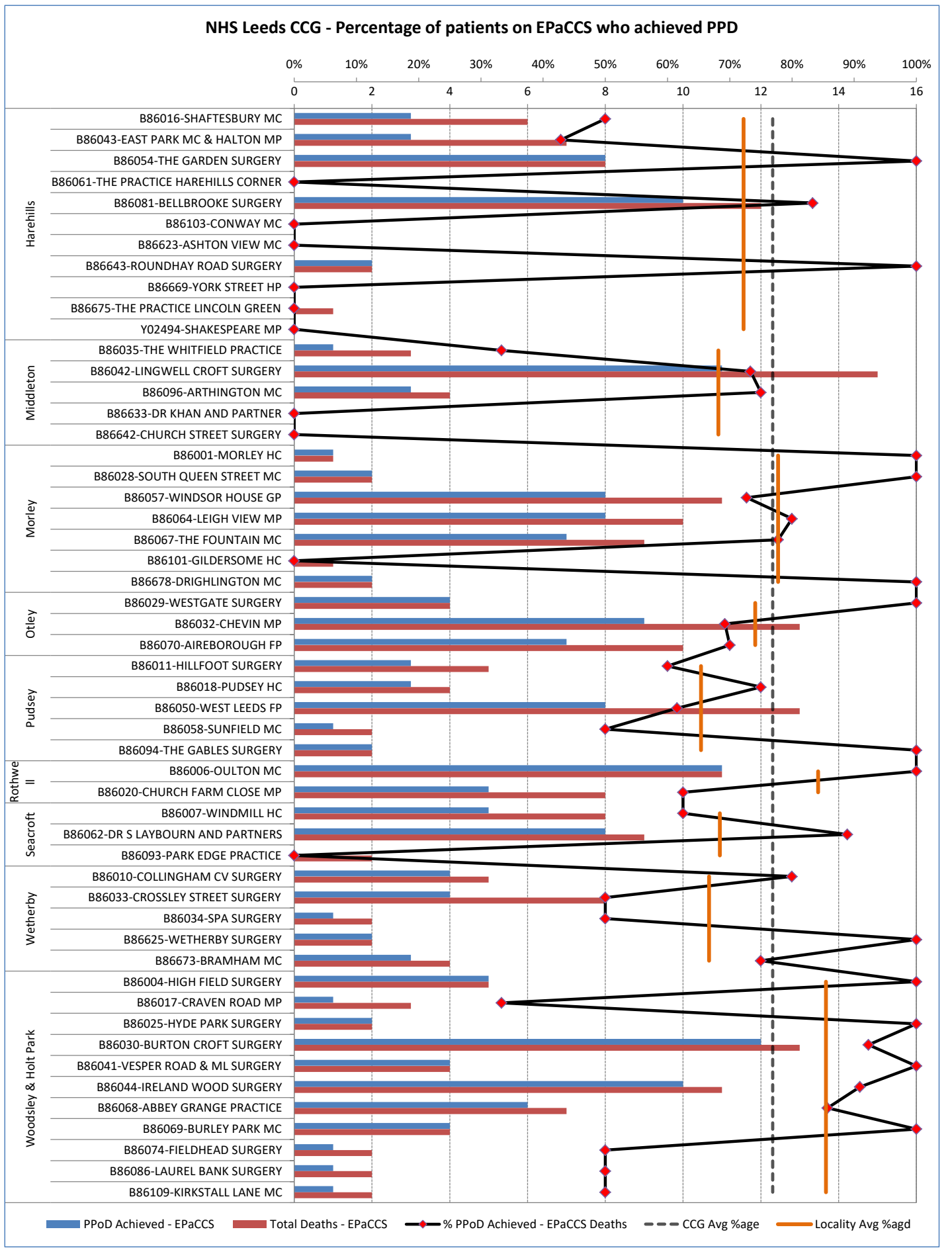
C1.2a Percentage of Patients on EPaCCS who have achieved Preferred Place of Death - NHS Leeds CCG (Part 1 of 2)



Part 1 - GP Practice EPaCCS Data
2020/21 Report (Q2)

NHS Leeds CCG

C1.2b Percentage of Patients on EPaCCS who have achieved Preferred Place of Death - NHS Leeds CCG (Part 2 of 2)

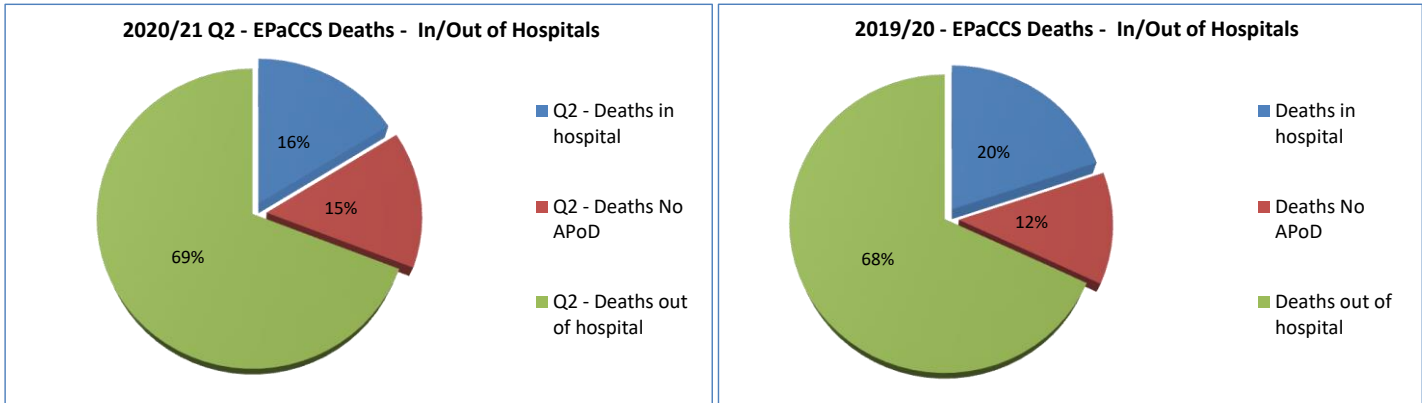


Part 2 - Leeds Clinical Commissioning Group (CCG) EPaCCS Data 2020/21 Report (Q2)

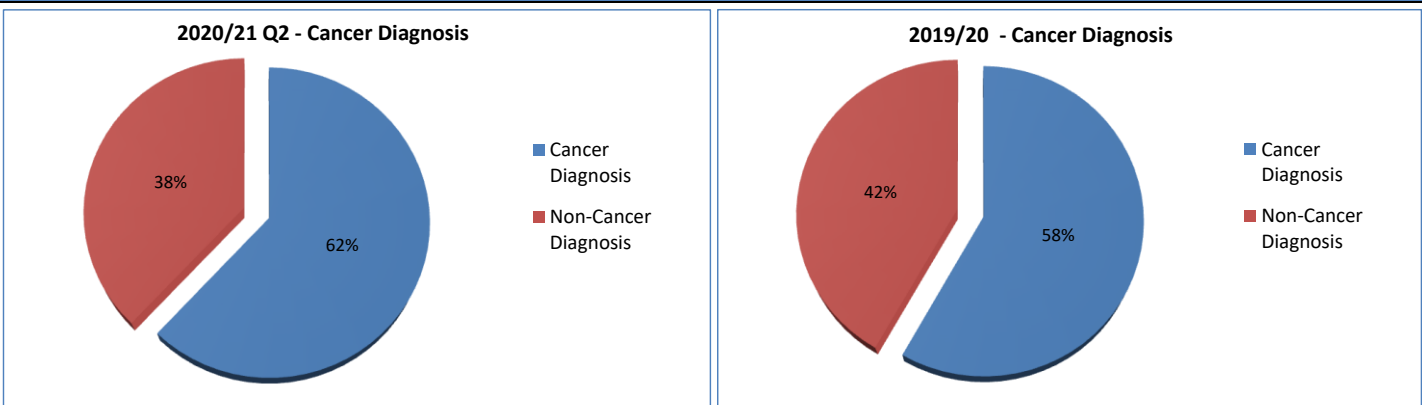
C2.1 Total patient deaths in and out of hospital and total deaths by CCG

	Q1		Q2		Q3		Q4		Total	
	EPaCCS		EPaCCS		EPaCCS		EPaCCS		EPaCCS	
1. Total deaths in hospital?	125	12%	107	16%					232	13%
2. Total deaths out of hospital?	752	70%	458	69%					1210	70%
3. Total number of deaths with No APoD	192	18%	98	15%					290	17%
4. Total number of deaths in Leeds CCG	All	EPaCCS	All	EPaCCS	All	EPaCCS	All	EPaCCS	All	EPaCCS
	1995	1069	1271	663					3266	1732

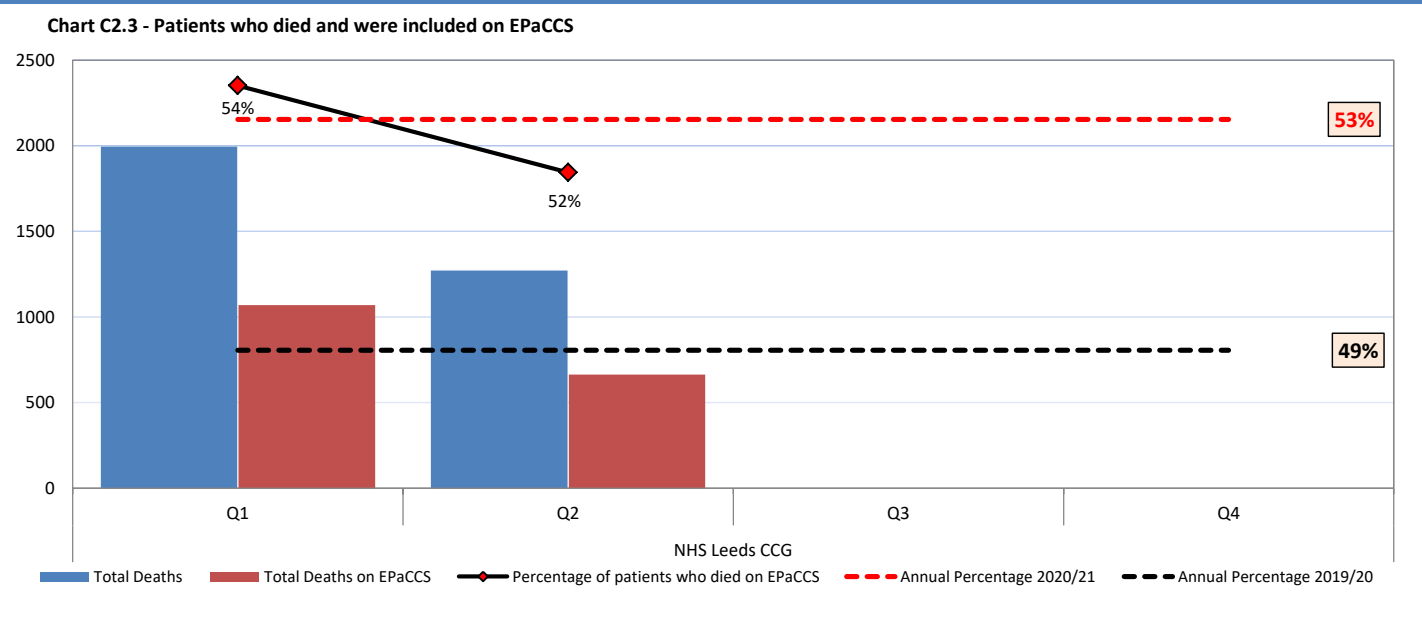
Chart C2.1a - Percentage deaths in hospital / out of hospital for 2020/21 Report (Q2) compared with previous year.



C2.2 Patients with a Cancer Diagnosis recorded at any point in life (2020/21 Report (Q2) compared with previous year)



C2.3 Patients who died and were included on EPaCCS

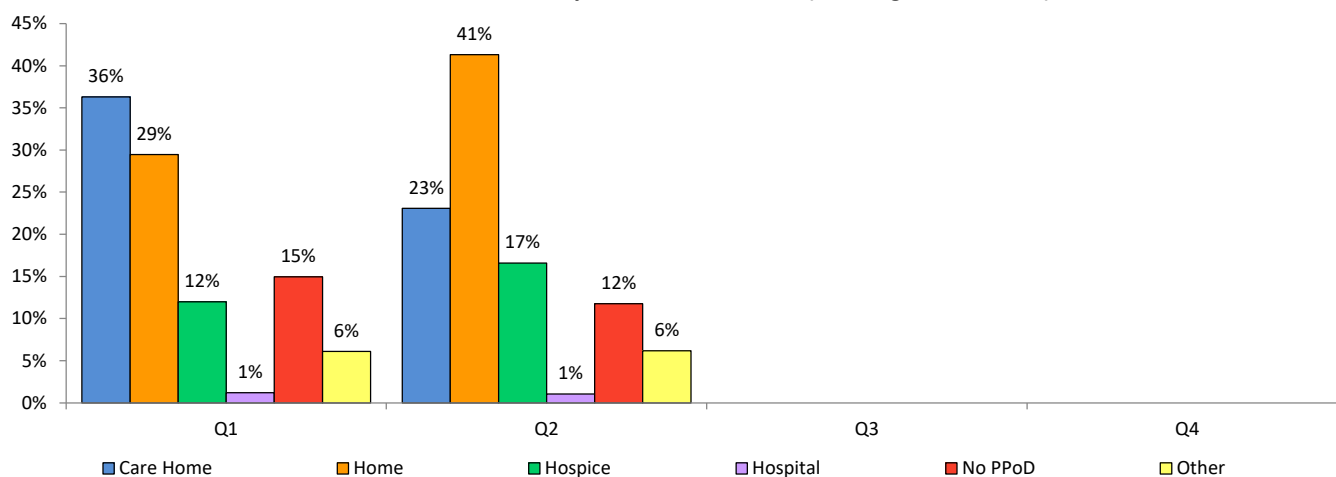


Part 2 - Leeds Clinical Commissioning Group (CCG) EPaCCS Data 2020/21 Report (Q2)

C2.4 Preferred place of death recorded by CCG

		NHS Leeds CCG			
	Preferred Place of Death	Q1	Q2	Q3	Q4
1	Care Home	388	153		
2	Home	315	274		
3	Hospice	128	110		
4	Hospital	13	7		
5	No PPOD (preferred place of death)	160	78		
6	Undecided/Declined	65	41		
	Total	1069	663		

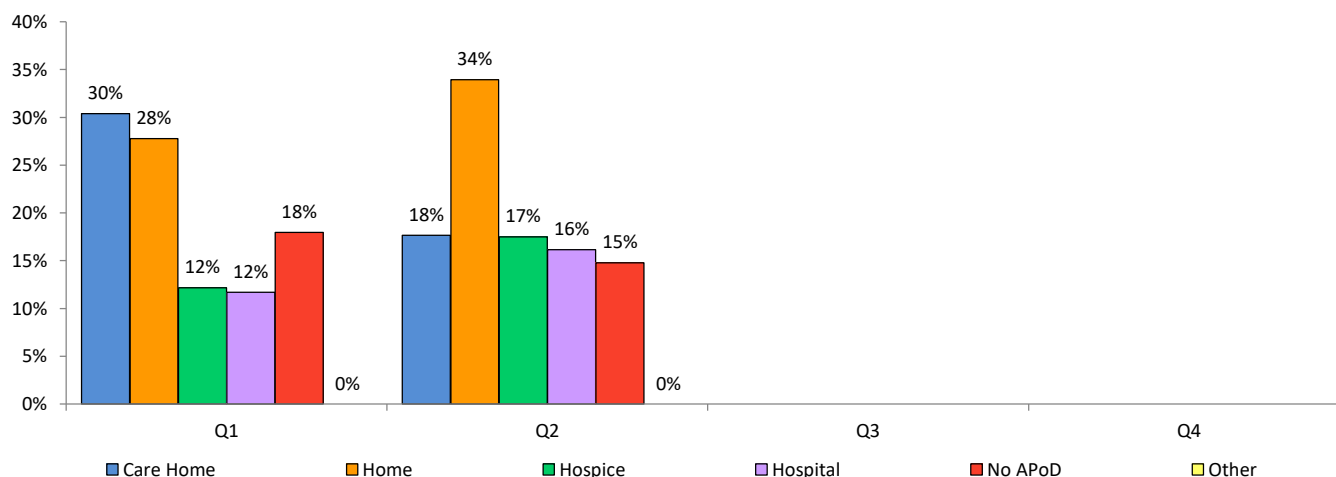
Preferred Place of Death by CCG - EPaCCS Deaths (as a %age of CCG Total)



C2.5 Actual place of death recorded by CCG

		NHS Leeds CCG			
	Actual Place of Death	Q1	Q2	Q3	Q4
1	Care Home	325	117		
2	Home	297	225		
3	Hospice	130	116		
4	Hospital	125	107		
5	No APoD (actual place of death)	192	98		
6	Other	0	0		
	Total	1069	663		

Actual Place of Death by CCG - EPaCCS Deaths (as a %age of CCG Total)

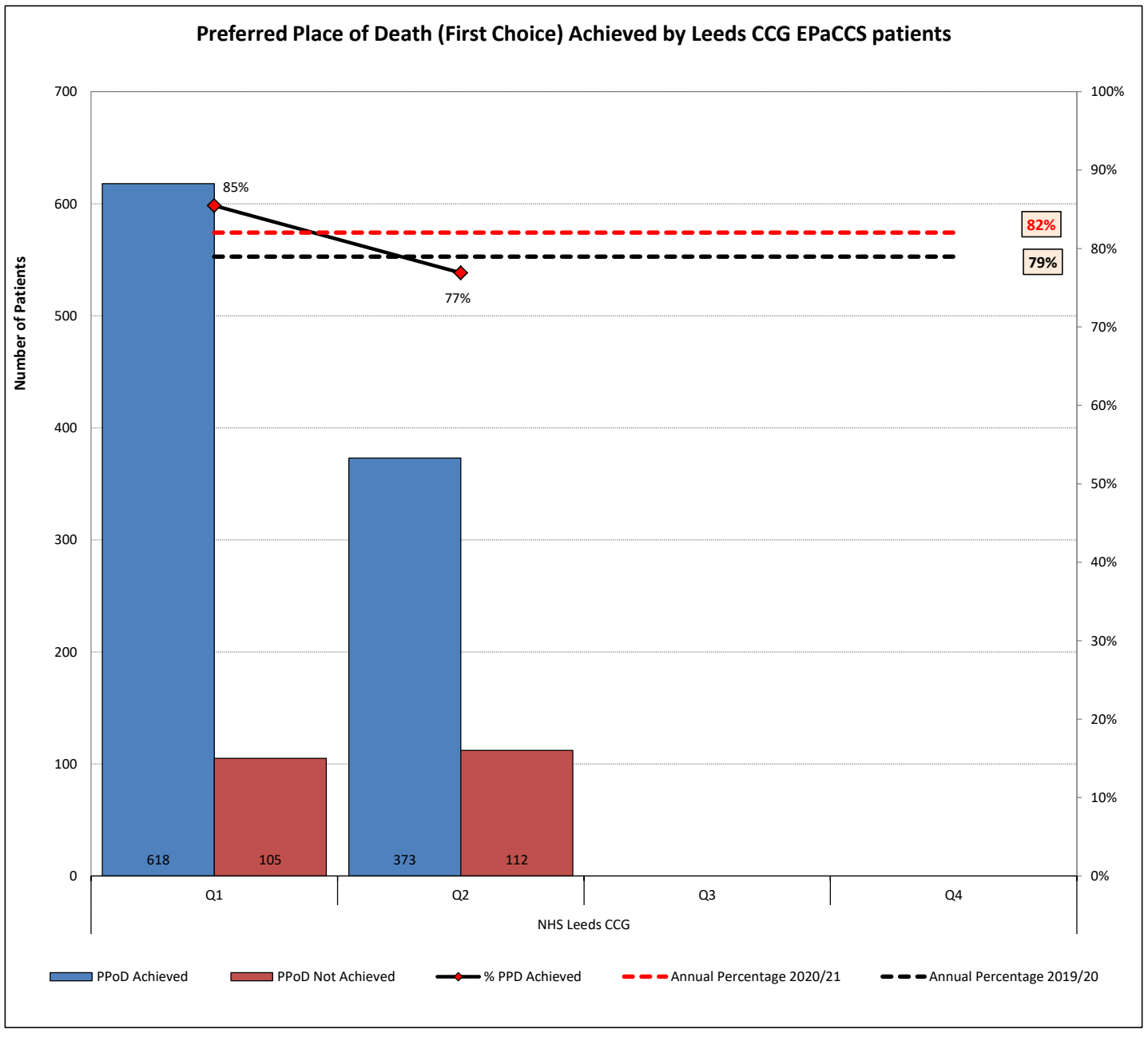


Part 2 - Leeds Clinical Commissioning Group (CCG) EPaCCS Data 2020/21 Report (Q2)

C2.6 Preferred Place of Death Achieved (First Choice) by Leeds CCG EPaCCS patients

CCG	Qtr	PPoD Achieved	PPoD Not Achieved	% PPD Achieved
NHS Leeds CCG	Q1	618	105	85%
	Q2	373	112	77%
	Q3			
	Q4			
	Total	991	217	82%

NOTE: Only patients with both PPoD and APoD recorded are included in this analysis



Part 2 - Leeds Clinical Commissioning Group (CCG) EPaCCS Data 2020/21 Report (Q2)

C2.7 Duration of time (in weeks) the patients were on EPaCCS (Leeds City wide)

Chart - Duration of time (in weeks) the patients were on EPaCCS by Quarter (as %age of CCG Total)

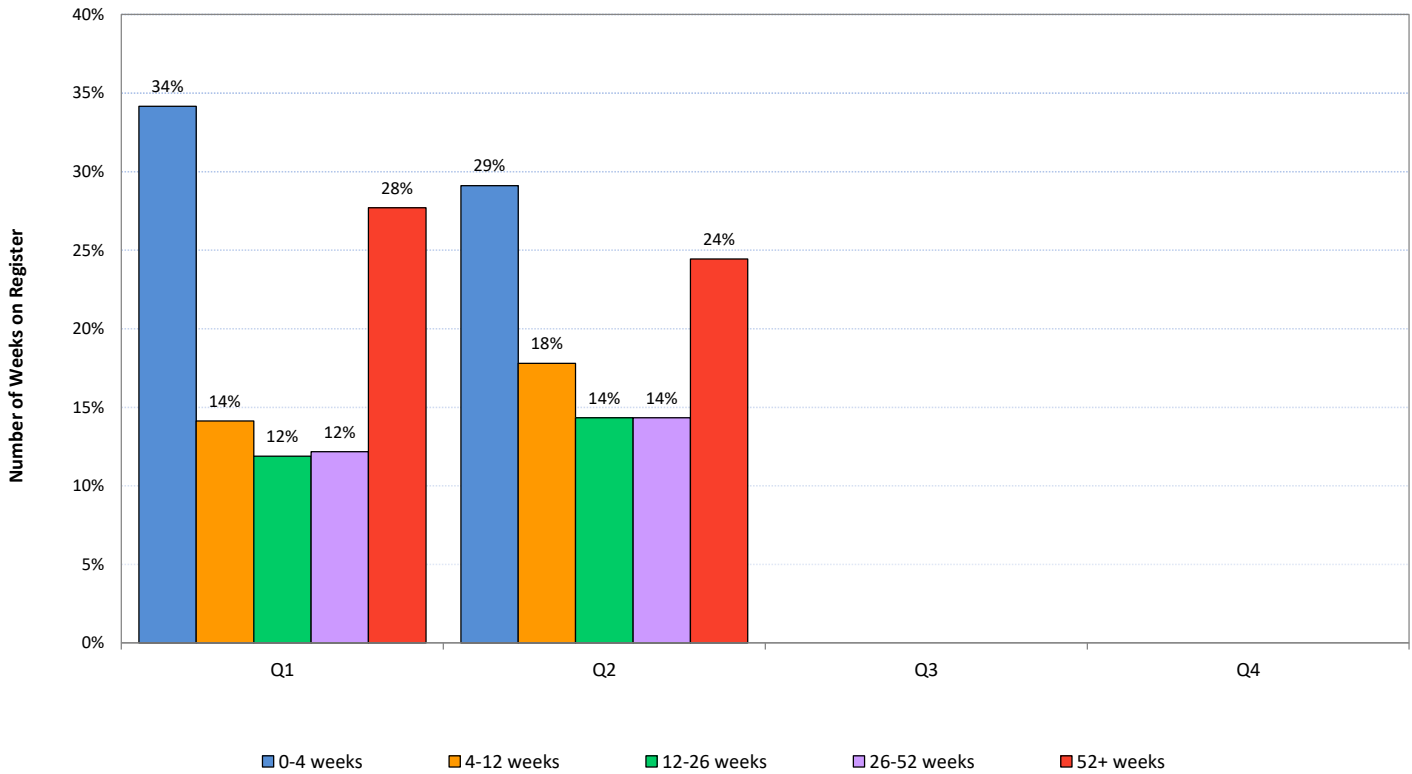
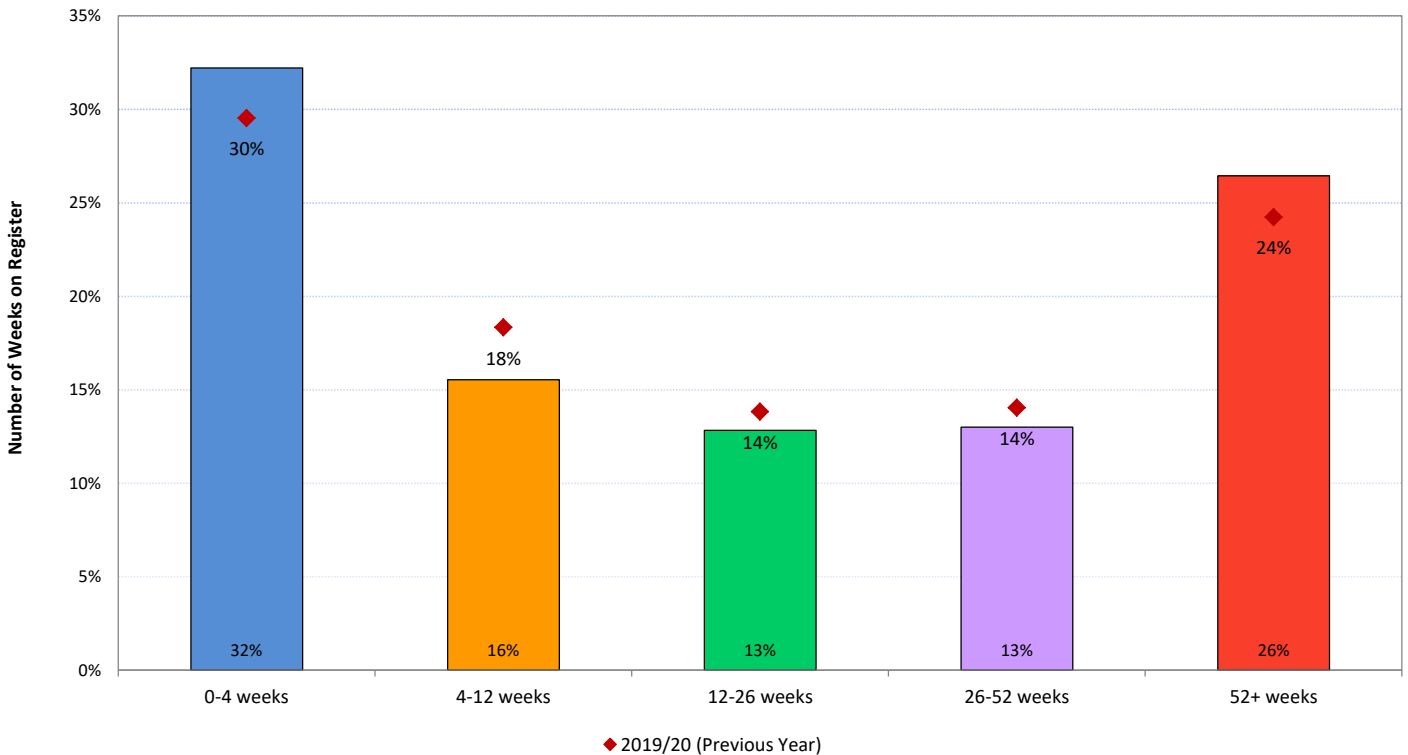


Chart - Duration of time (in weeks) the patients were on EPaCCS by CCG (as %age of CCG Total)

2020-21 (YTD) vs 2019-20



**Part 2 - Leeds Clinical Commissioning Group (CCG) EPaCCS Data
2020/21 Report (Q2)**

C2.8a Unplanned hospital usage (A&E and Non-Elective Admissions) by EPaCCS Patients in the last 90 days of their life.

Please note that the data below only relates to patients who have died in a particular quarter and looking back 90 days from their respective date of death.
The actual hospital visits/admissions could have taken place in a previous quarter i.e. a patient who died on 01 April 2020 may have accessed the hospital between Jan to Mar 2020

Activity and Cost Breakdown

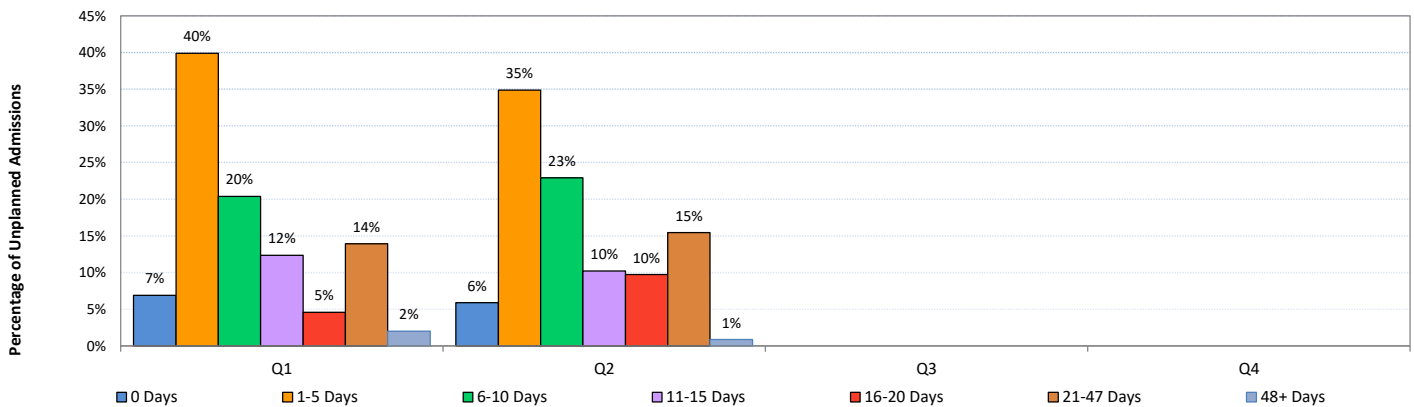
	Q1		Q2		Q3		Q4		Total	
A&E visits	Activity	Cost	Activity	Cost	Activity	Cost	Activity	Cost	Activity	Cost
Unique Patients	456		314						770	
Total Activity and Cost	669	£133,416	456	£91,130					1125	£224,546
Average Activity and Cost	1.5	£293	1.5	£290					1.5	£292
Planned Admissions (EL)	Activity	Cost	Activity	Cost	Activity	Cost	Activity	Cost	Activity	Cost
Unique Patients	23		17						40	
Total Activity and Cost	25	£89,822	18	£32,218					43	£122,040
Average Activity and Cost	1.1	£3,905.30	1.1	£1,895.18					1.1	£3,051
Unplanned Admissions (NEL)	Activity	Cost	Activity	Cost	Activity	Cost	Activity	Cost	Activity	Cost
Unique Patients	495		381						876	
Total Activity and Cost	697	£3,028,861	576	£2,571,062					1273	£5,599,923
Average Activity and Cost	1.4	£6,119	1.5	£6,748					1.5	£6,393

Average and Median Number of Hospital Inpatient bed days/person in last 90 days of life

	Q1		Q2		Q3		Q4	
Total Bed Days Elective	152		77					
Total Bed Days Non-Elective	7285		6292					
Total	7437		6369					
	Average	Median	Average	Median	Average	Median	Average	Median
Elective Admissions	6.6	3.0	4.5	1.0				
Non-Elective Admissions	14.7	10.0	16.5	12.0				
All Inpatient Admissions	14.8	10.0	16.5	12.0				

Length of Stay Breakdown for Unplanned Admissions (Non-Elective Inpatient)

	Q1		Q2		Q3		Q4		Total	
Length of Stay (Unplanned Admissions)	No. of Admissions		No. of Admissions		No. of Admissions		No. of Admissions		No. of Admissions	
0 Days	48		34						82	
1-5 Days	278		201						479	
6-10 Days	142		132						274	
11-15 Days	86		59						145	
16-20 Days	32		56						88	
21-47 Days	97		89						186	
48+ Days	14		5						19	
	697		576						1273	



Percentage of patients with 3 or more Unplanned Admissions (Non-Elective Inpatient)

	Q1	Q2	Q3	Q4
%age against ALL EPaCCS	4%	6%		

**Part 2 - Leeds Clinical Commissioning Group (CCG) EPaCCS Data
2020/21 Report (Q2)**

C2.8b Reasons for Unplanned hospital usage (Non-Elective Admissions) by EPaCCS Patients in the last 90 days of their life.

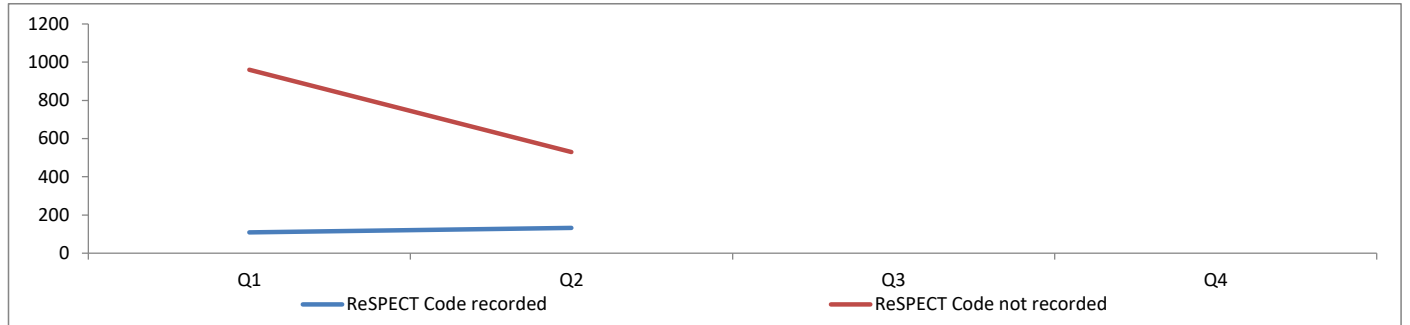
Top 5 Reasons for Unplanned Admissions (Year to Date)

HRG Chapter	Primary Diagnosis	Q1	Q2	Q3	Q4
Respiratory System Procedures and Disorders		31.71%	23.09%		
	Diseases of the respiratory system	16.21%	16.49%		
	Codes for special purposes	9.18%	0.00%		
	Neoplasms	4.73%	5.38%		
	Symptoms, signs and abnormal clinical and laboratory findings, not elsewhere classified	0.86%	0.35%		
	Diseases of the circulatory system	0.72%	0.87%		
Gastrointestinal Tract Disorders		11.05%	13.19%		
	Neoplasms	4.45%	3.99%		
	Diseases of the digestive system	3.73%	4.51%		
	Symptoms, signs and abnormal clinical and laboratory findings, not elsewhere classified	1.29%	2.08%		
	Codes for special purposes	0.72%	1.04%		
	Certain infectious and parasitic diseases	0.43%	1.04%		
	Injury, poisoning and certain other consequences of external causes	0.14%	0.17%		
	Diseases of the blood and blood-forming organs and certain disorders involving the immune mechanism	0.14%	0.17%		
	Diseases of the skin and subcutaneous tissue	0.14%	0.17%		
Nervous System Procedures and Disorders		7.17%	6.08%		
	Diseases of the circulatory system	2.73%	1.22%		
	Neoplasms	2.15%	1.91%		
	Diseases of the nervous system	1.29%	0.52%		
	Symptoms, signs and abnormal clinical and laboratory findings, not elsewhere classified	0.57%	1.56%		
	Injury, poisoning and certain other consequences of external causes	0.43%	0.87%		
Cardiac Disorders		6.74%	6.60%		
	Diseases of the circulatory system	5.60%	6.25%		
	Symptoms, signs and abnormal clinical and laboratory findings, not elsewhere classified	0.86%	0.35%		
	Injury, poisoning and certain other consequences of external causes	0.29%	0.00%		
Renal Procedures and Disorders		4.73%	4.17%		
	Diseases of the genitourinary system	4.59%	4.17%		
	Injury, poisoning and certain other consequences of external causes	0.14%	0.00%		

Part 2 - Leeds Clinical Commissioning Group (CCG) EPaCCS Data 2020/21 Report (Q2)

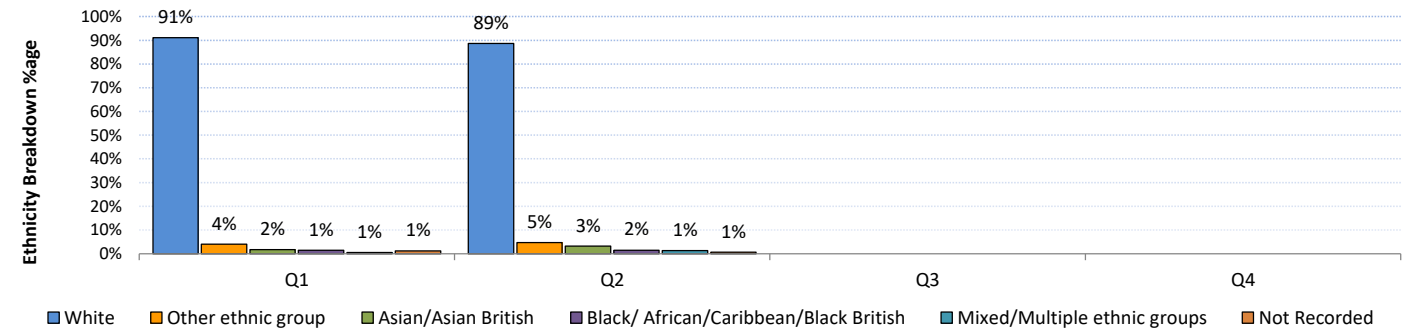
C2.9 EPaCCS patients who have a ReSPECT (Recommended Summary Plan for Emergency Care and Treatment) Code recorded on the system.

Patients with ReSPECT Code	NHS Leeds CCG			
	Q1	Q2	Q3	Q4
ReSPECT Code recorded	109	133		
ReSPECT Code not recorded	960	530		
Total	1069	663		



C2.10 Ethnicity Breakdown of EPaCCS patients

Ethnicity Breakdown	NHS Leeds CCG			
	Q1	Q2	Q3	Q4
White	974	588		
Other ethnic group	43	31		
Asian/Asian British	18	21		
Black/ African/Caribbean/Black British	15	10		
Mixed/Multiple ethnic groups	6	9		
Not Recorded	13	4		
Total	1069	663		



Ethnicity Breakdown comparison of current 2020/21 Year to Date data with 2019/20

