



EPaCCS Outcome Report

NHS Leeds CCG

2019-20 Report (Q1-Q4) - CCG Level

Data Source : SystemOne and EMIS

Data provided by : Health Care Hub (Leeds), Leeds Community Healthcare, St Gemma's Hospice and Sue Ryder
Wheatfields Hospice

Report Compiled by : Business Intelligence Team, NHS Leeds CCG

	Page
Summary	3
Part 1 - GP Practice EPaCCS Data	
C1.1a Patients who died and were included on EPaCCS - NHS Leeds CCG (Part 1 of 2)	4
C1.1b Patients who died and were included on EPaCCS - NHS Leeds CCG (Part 2 of 2)	5
C1.2a Percentage of Patients on EPaCCS who have achieved Preferred Place of Death - NHS Leeds CCG (Part 1 of 2)	6
C1.2b Percentage of Patients on EPaCCS who have achieved Preferred Place of Death - NHS Leeds CCG (Part 2 of 2)	7
Part 2 - Leeds CCGs EPaCCS Data	
C2.1 Total patient deaths in and out of hospital and total deaths by CCG	8
C2.2 Patients with a Cancer Diagnosis recorded for 2019-20 Report (Q1-Q4) compared with previous year.	8
C2.3 Patients who died and were included on EPaCCS	8
C2.4 Preferred place of death recorded by CCG	9
C2.5 Actual place of death recorded by CCG	9
C2.6 Preferred Place of Death Achieved (First Choice) by Leeds CCG EPaCCS patients	10
C2.7 Duration of time (in weeks) the patients were on EPaCCS (Leeds City wide)	11
C2.8a Unplanned hospital usage (A&E and Non-Elective Admissions) by EPaCCS Patients in the last 90 days of their life.	12
C2.8b Reasons for Unplanned hospital usage (Non-Elective Admissions) by EPaCCS Patients in the last 90 days of their life.	13

EPaCCS Outcome Report

The Electronic Palliative Care Coordination System (EPaCCS) is an electronic record that supports advance care planning conversations and improves the coordination of care for people approaching the end of life.

It provides a summary of key recommendations, preferences and information essential to the high quality care for patients with palliative care needs and those choosing to plan ahead, irrespective of prognosis. Local and national data shows that when patients are given the opportunity to discuss and share their preferences they are more likely to achieve their end of life care goals.

This is a 2019-2020 annual Leeds EPaCCS report, combining SystemOne and EMIS data for patients registered from all the practices across Leeds. To ensure a comprehensive view of advance care planning it collates EPaCCS data entered by all relevant care providers: Leeds Community Healthcare community services, hospice services, community palliative care teams in addition to primary care.

These EPaCCS reports have been produced to enable you to reflect on end of life care in your practice.

Key findings of the 2019-20 Report (Q1-Q4) report are:

- ◆ 49% of adults who died in Leeds had an EPaCCS record compared to 45% the previous year.
- ◆ 79% achieved their preferred place of death this year compared to 73% last year; with 68% dying outside of hospital compared to 67% last year.
- ◆ The proportion of patients whose EPaCCS record was started more than 3 months before they died is at 52% compared to 53% the previous year.
- ◆ The proportion of patients without an actual place of death recorded has decreased to 12% from 13% last year.

This report covers a period of unprecedented demand across the health and social care environment: particularly the winter period. It is a considerable achievement the proportion of patients being supported in their preferred place has been maintained whilst the overall proportion of people with an EPaCCS record has increased. This marks a sustained improvement on 2016-2017 when 33% of adults who died had an EPaCCS record.

The findings show that a greater proportion of people are being given opportunities to discuss, document and share their care preferences at an earlier stage and demonstrate improved data quality.

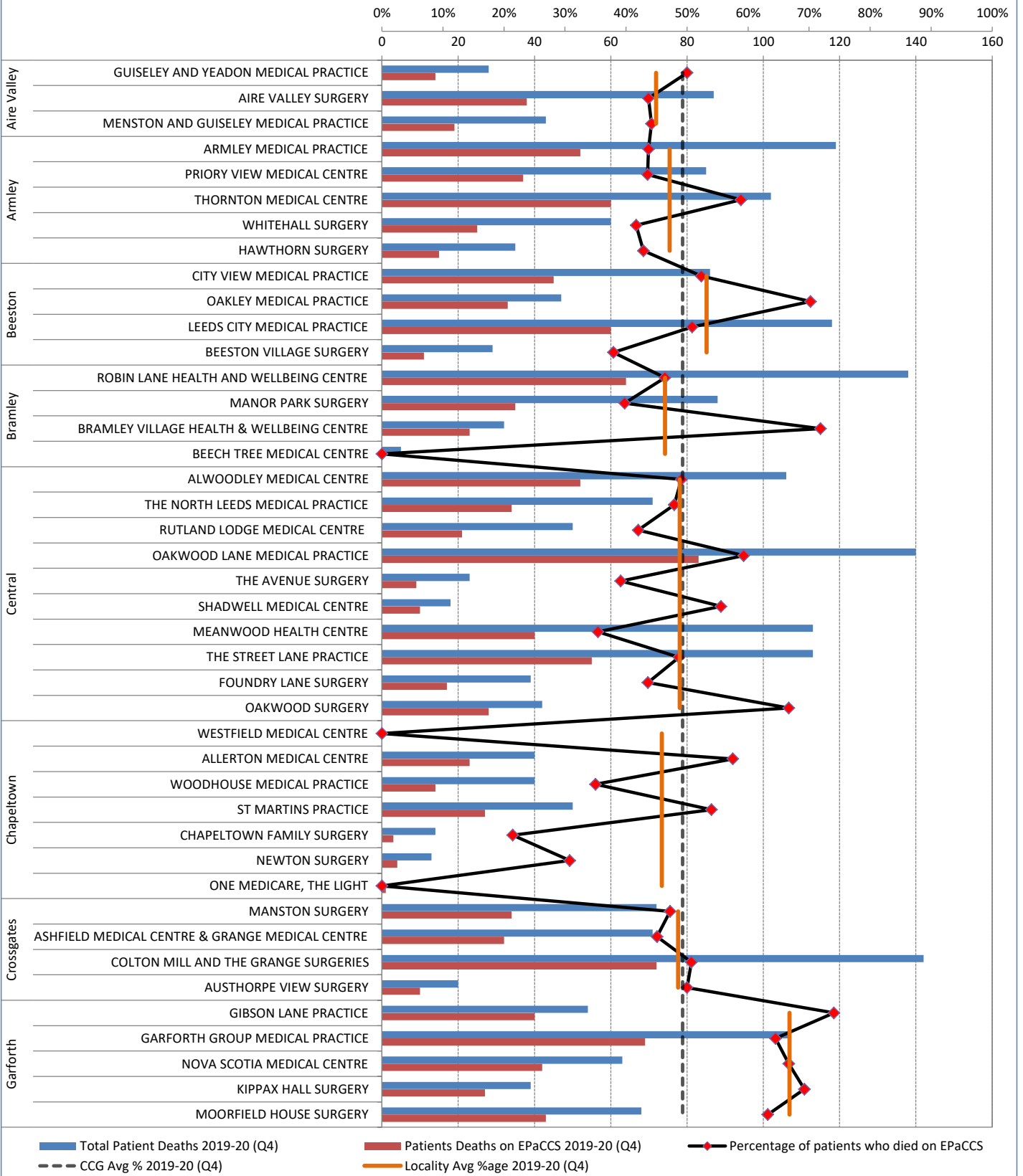
Part 1 - GP Practice EPaCCS Data 2019-20 Report (Q1-Q4)

NHS Leeds CCG

C1.1a Patients who died and were included on EPaCCS - NHS Leeds CCG (Part 1 of 2)

	Q1	Q2	Q3	Q4	Total
a. Number of All patient deaths?	1391	1334	1563	1567	5855
b. Number of patients deaths on EPaCCS?	691	706	754	733	2884
c. % of patient deaths on EPaCCS?	49.7%	52.9%	48.2%	46.8%	49.3%

NHS Leeds CCG - Percentage of patients who died on EPaCCS

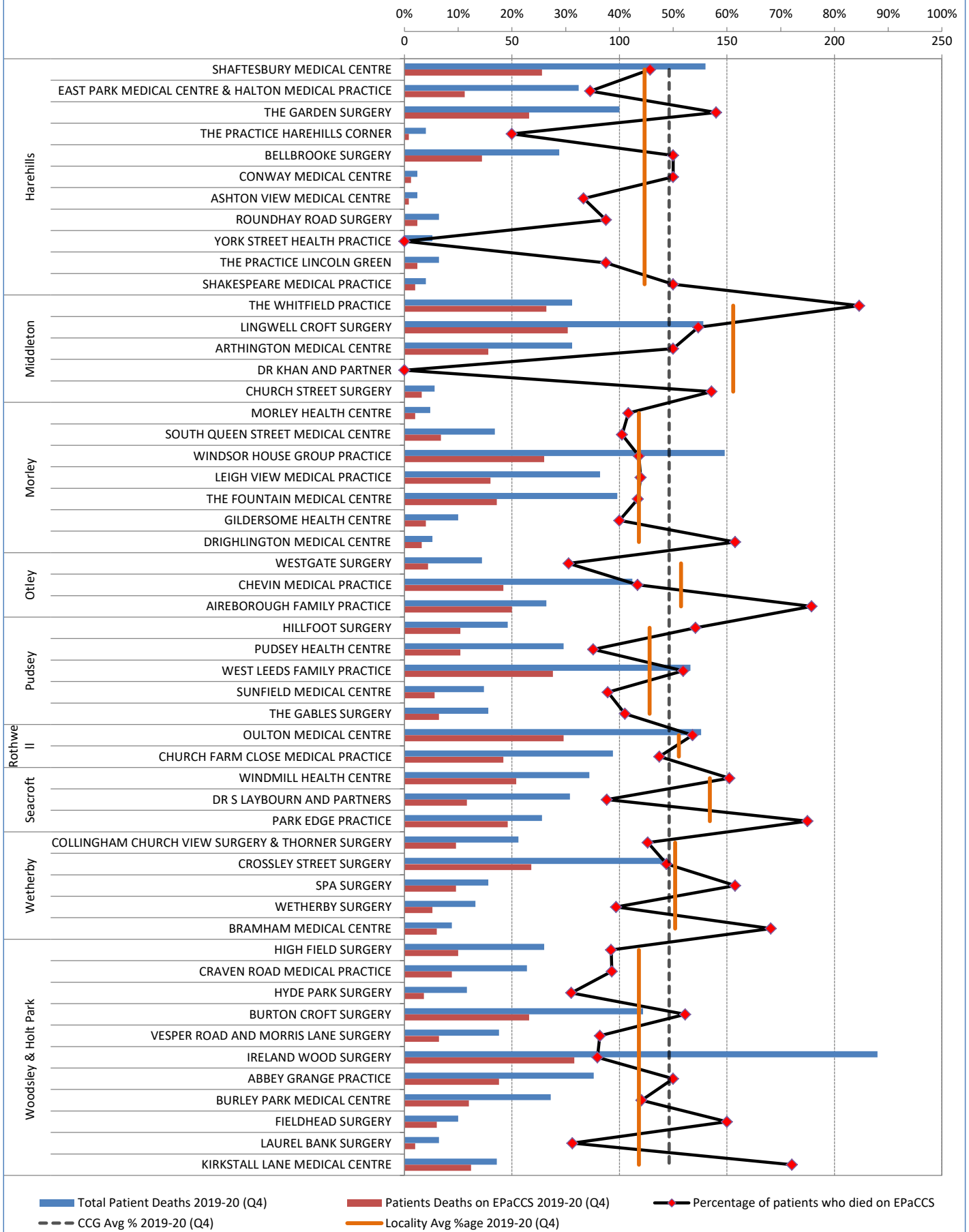


Part 1 - GP Practice EPaCCS Data 2019-20 Report (Q1-Q4)

NHS Leeds CCG

C1.1b Patients who died and were included on EPaCCS - NHS Leeds CCG (Part 2 of 2)

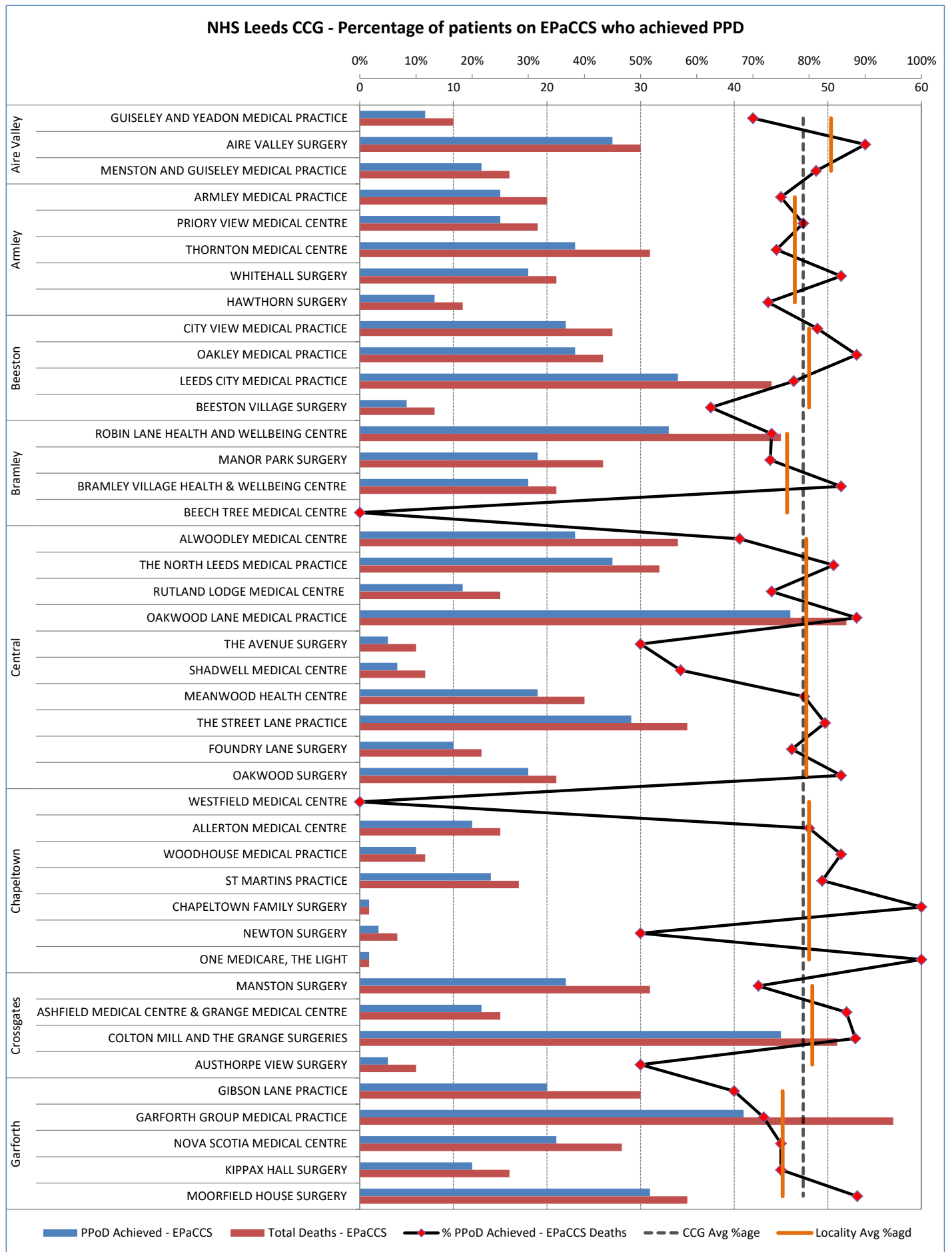
NHS Leeds CCG - Percentage of patients who died on EPaCCS



Part 1 - GP Practice EPaCCS Data
2019-20 Report (Q1-Q4)

NHS Leeds CCG

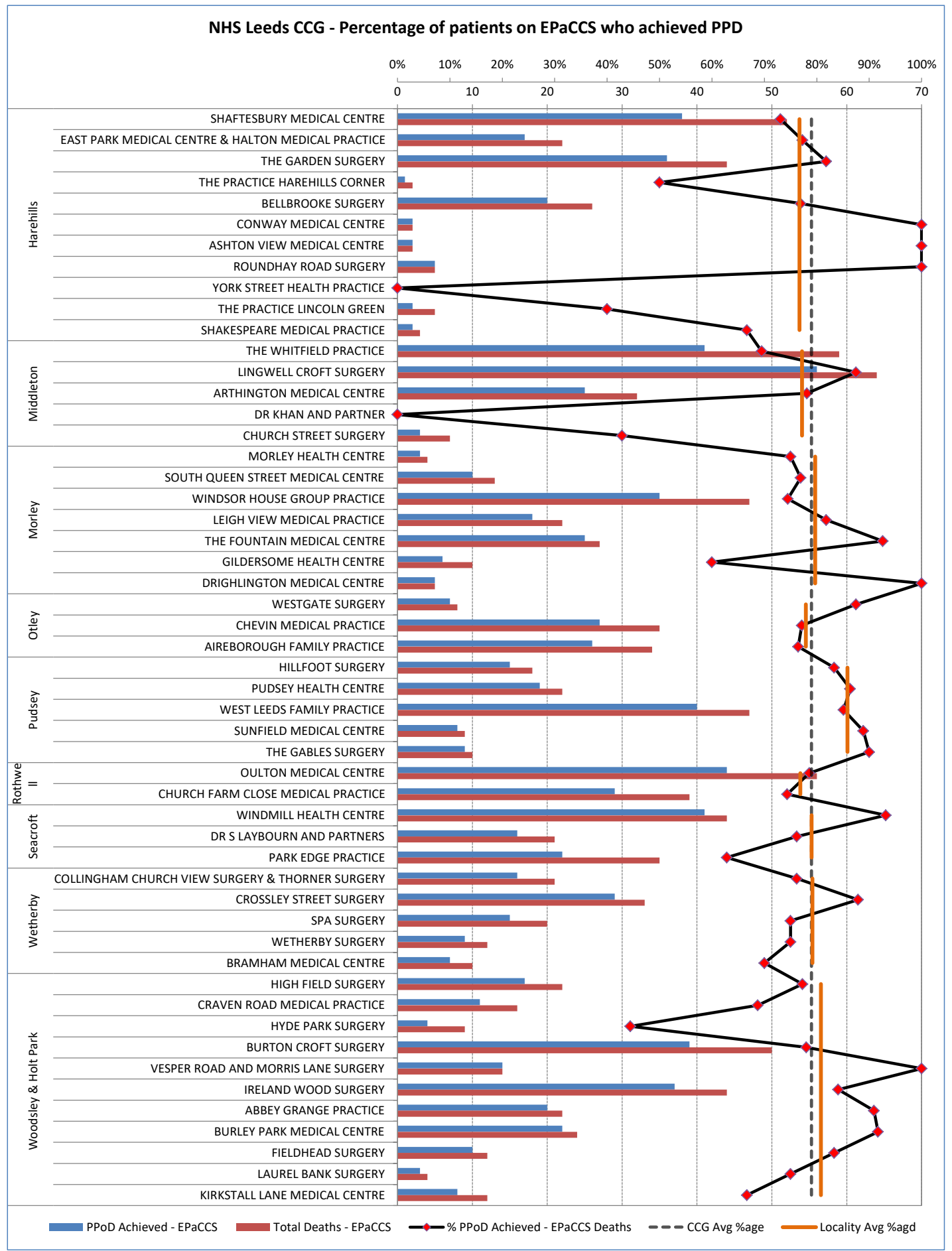
C1.2a Percentage of Patients on EPaCCS who have achieved Preferred Place of Death - NHS Leeds CCG (Part 1 of 2)



Part 1 - GP Practice EPaCCS Data
2019-20 Report (Q1-Q4)

NHS Leeds CCG

C1.2b Percentage of Patients on EPaCCS who have achieved Preferred Place of Death - NHS Leeds CCG (Part 2 of 2)

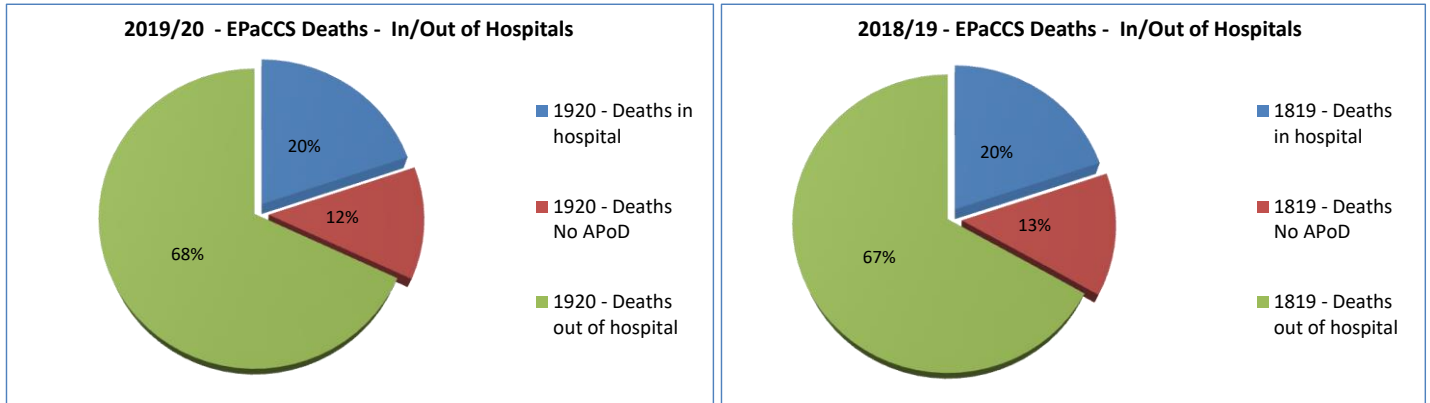


Part 2 - Leeds Clinical Commissioning Group (CCG) EPaCCS Data 2019-20 Report (Q1-Q4)

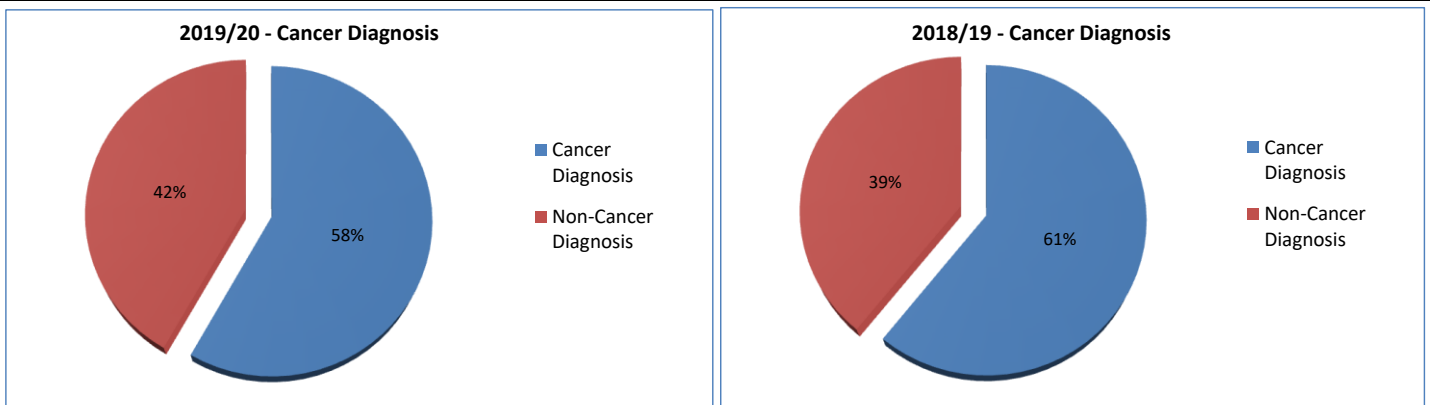
C2.1 Total patient deaths in and out of hospital and total deaths by CCG

	Q1		Q2		Q3		Q4		Total	
	EPaCCS		EPaCCS		EPaCCS		EPaCCS		EPaCCS	
1. Total deaths in hospital?	151	22%	153	22%	137	18%	131	18%	572	20%
2. Total deaths out of hospital?	451	65%	478	68%	536	71%	497	68%	1962	68%
3. Total number of deaths with No APoD	89	13%	75	11%	81	11%	105	14%	350	12%
4. Total number of deaths in Leeds CCG	All	EPaCCS	All	EPaCCS	All	EPaCCS	All	EPaCCS	All	EPaCCS
	1391	691	1334	706	1563	754	1567	733	5855	2884

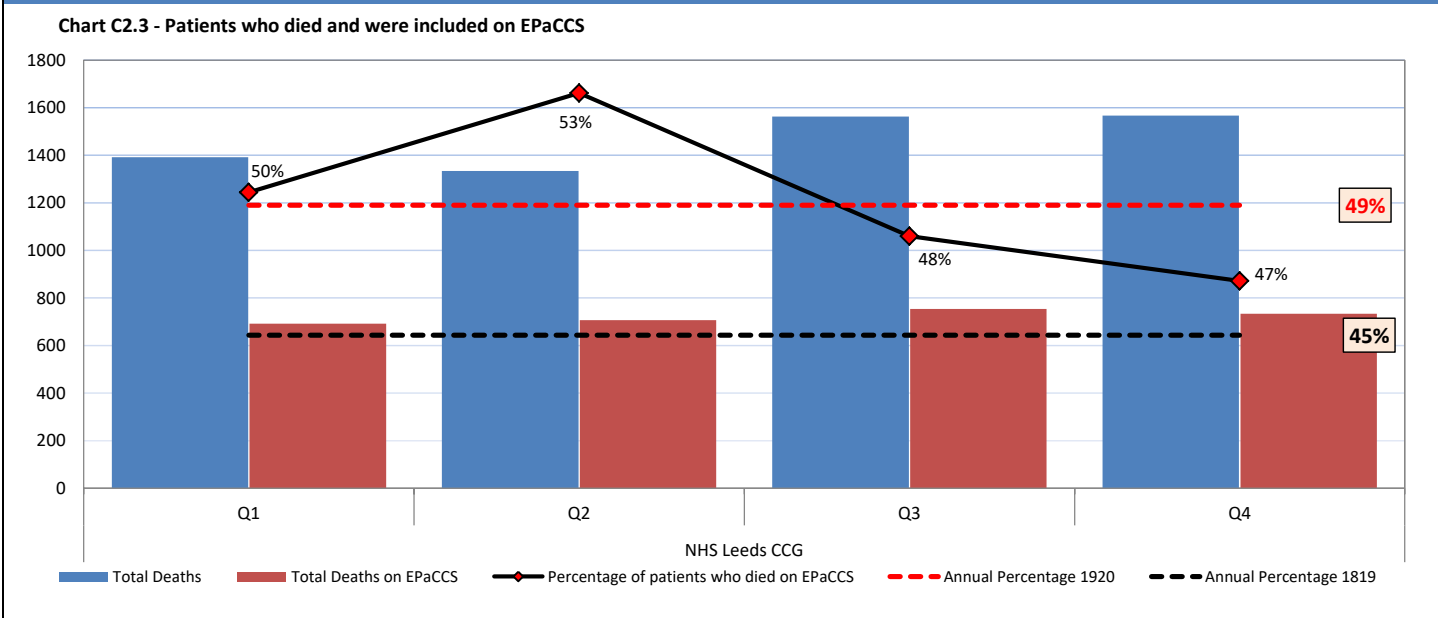
Chart C2.1a - Percentage deaths in hospital / out of hospital for 2019-20 Report (Q1-Q4) compared with previous year.



C2.2 Patients with a Cancer Diagnosis recorded for 2019-20 Report (Q1-Q4) compared with previous year.



C2.3 Patients who died and were included on EPaCCS

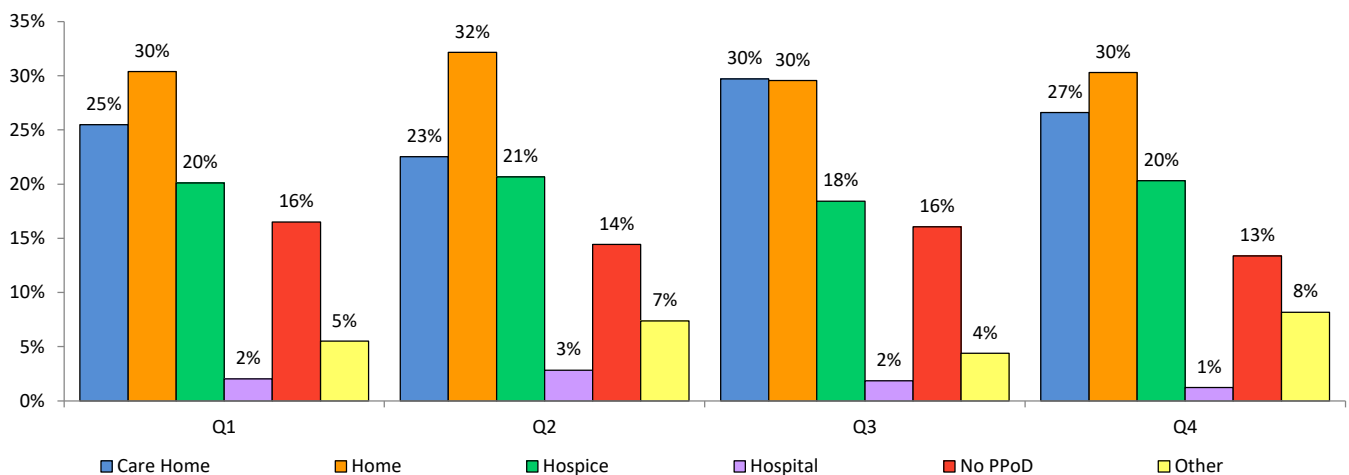


Part 2 - Leeds Clinical Commissioning Group (CCG) EPaCCS Data 2019-20 Report (Q1-Q4)

C2.4 Preferred place of death recorded by CCG

		NHS Leeds CCG			
Preferred Place of Death		Q1	Q2	Q3	Q4
1	Care Home	176	159	224	195
2	Home	210	227	223	222
3	Hospice	139	146	139	149
4	Hospital	14	20	14	9
5	No PPOD (preferred place of death)	114	102	121	98
6	Other	38	52	33	60
Total		691	706	754	733

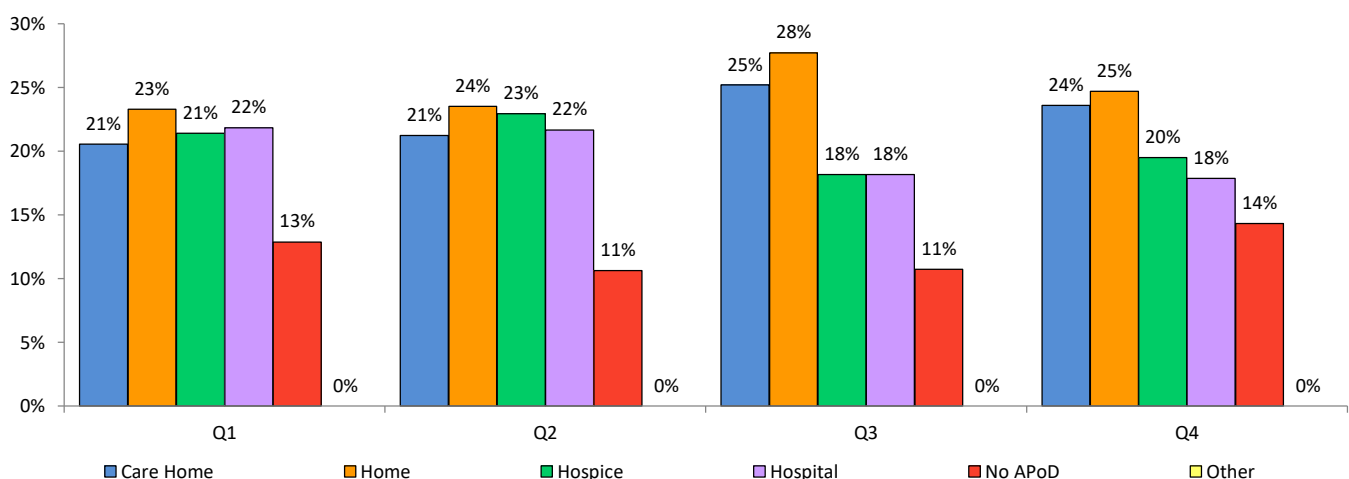
Preferred Place of Death by CCG - EPaCCS Deaths (as a %age of CCG Total)



C2.5 Actual place of death recorded by CCG

		NHS Leeds CCG			
Actual Place of Death		Q1	Q2	Q3	Q4
1	Care Home	142	150	190	173
2	Home	161	166	209	181
3	Hospice	148	162	137	143
4	Hospital	151	153	137	131
5	No APoD (actual place of death)	89	75	81	105
6	Other	0	0	0	0
Total		691	706	754	733

Actual Place of Death by CCG - EPaCCS Deaths (as a %age of CCG Total)

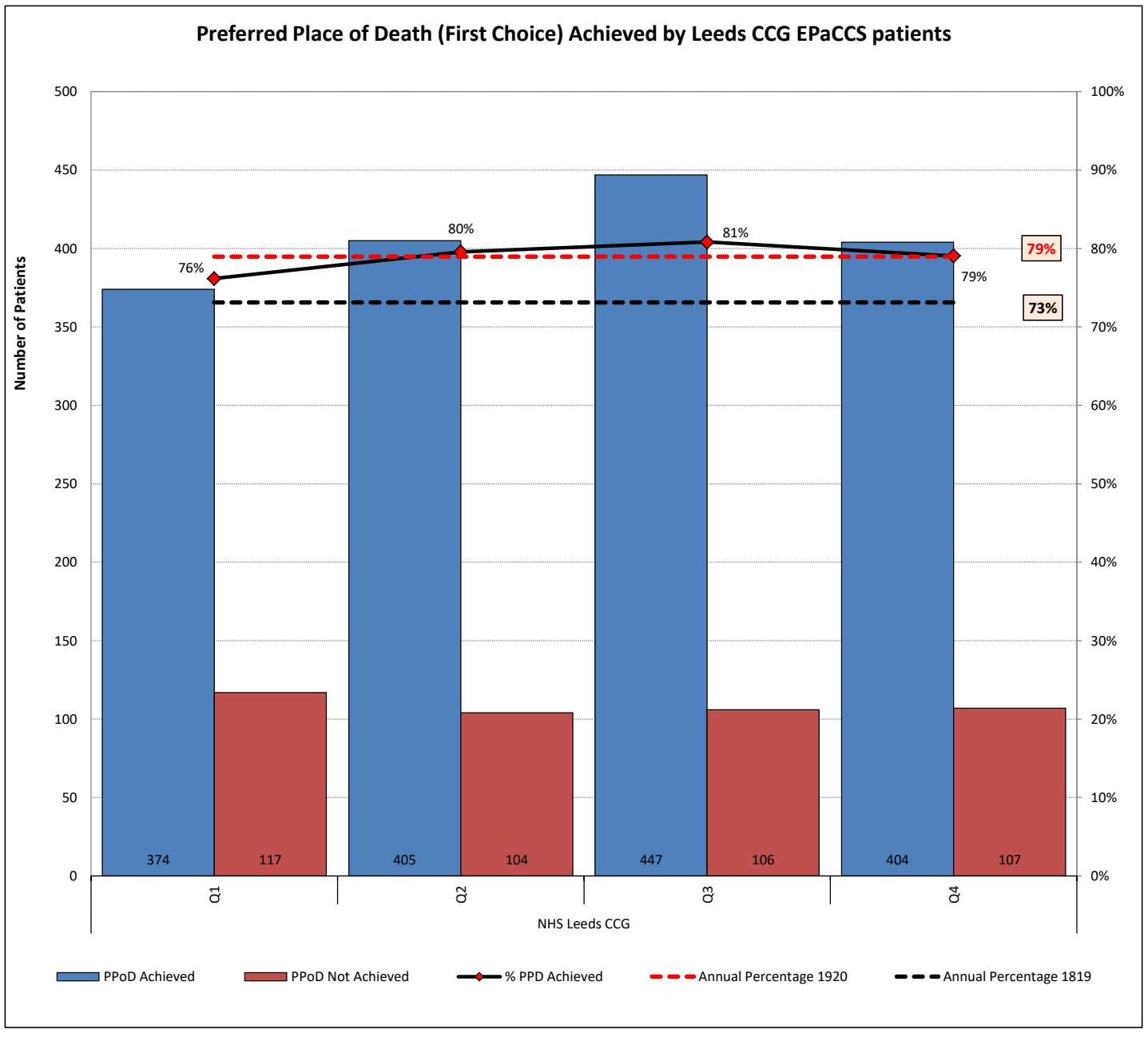


Part 2 - Leeds Clinical Commissioning Group (CCG) EPaCCS Data 2019-20 Report (Q1-Q4)

C2.6 Preferred Place of Death Achieved (First Choice) by Leeds CCG EPaCCS patients

CCG	Qtr	PPoD Achieved	PPoD Not Achieved	% PPD Achieved
NHS Leeds CCG	Q1	374	117	76%
	Q2	405	104	80%
	Q3	447	106	81%
	Q4	404	107	79%
	Total	1630	434	79%

NOTE: Only patients with both PPoD and APoD recorded are included in this analysis



Part 2 - Leeds Clinical Commissioning Group (CCG) EPaCCS Data 2019-20 Report (Q1-Q4)

C2.7 Duration of time (in weeks) the patients were on EPaCCS (Leeds City wide)

Chart - Duration of time (in weeks) the patients were on EPaCCS by Quarter (as %age of CCG Total)

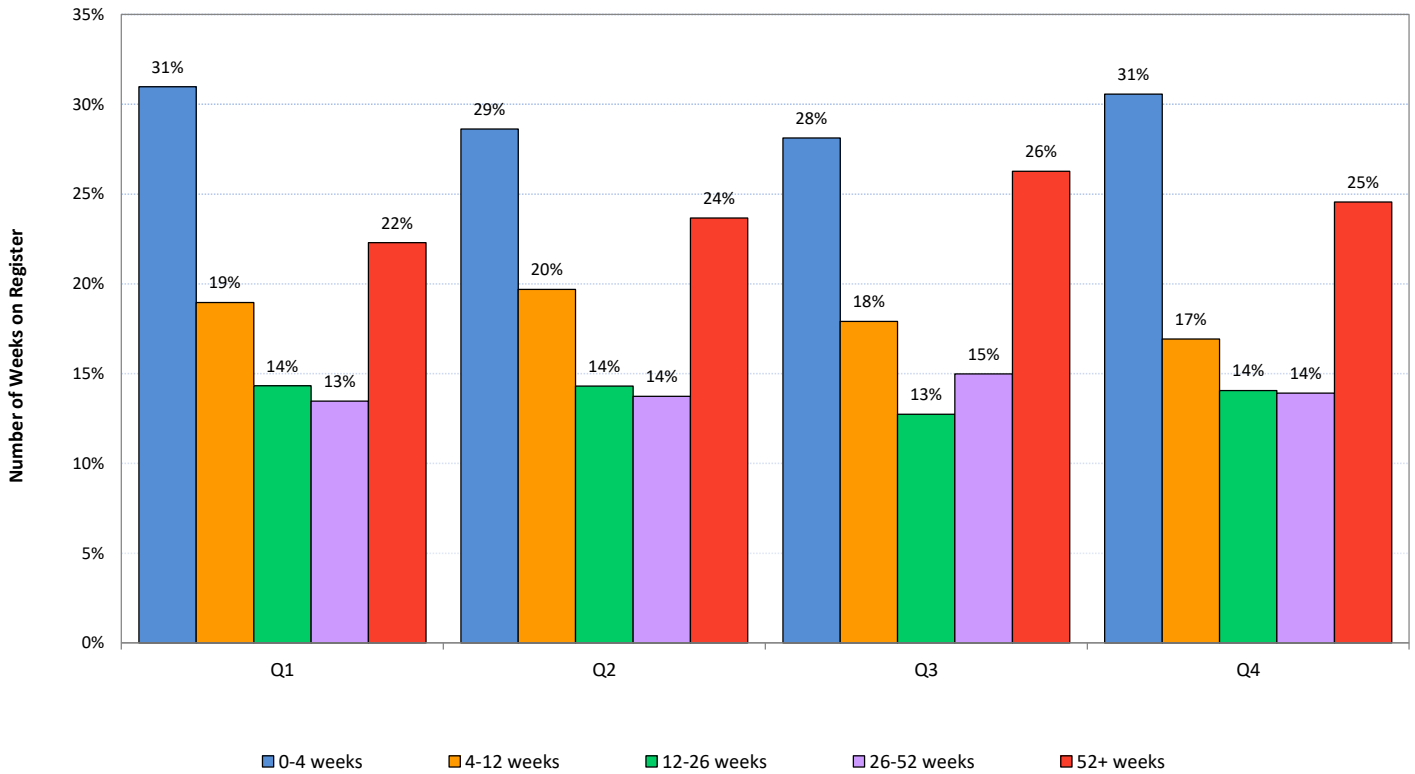
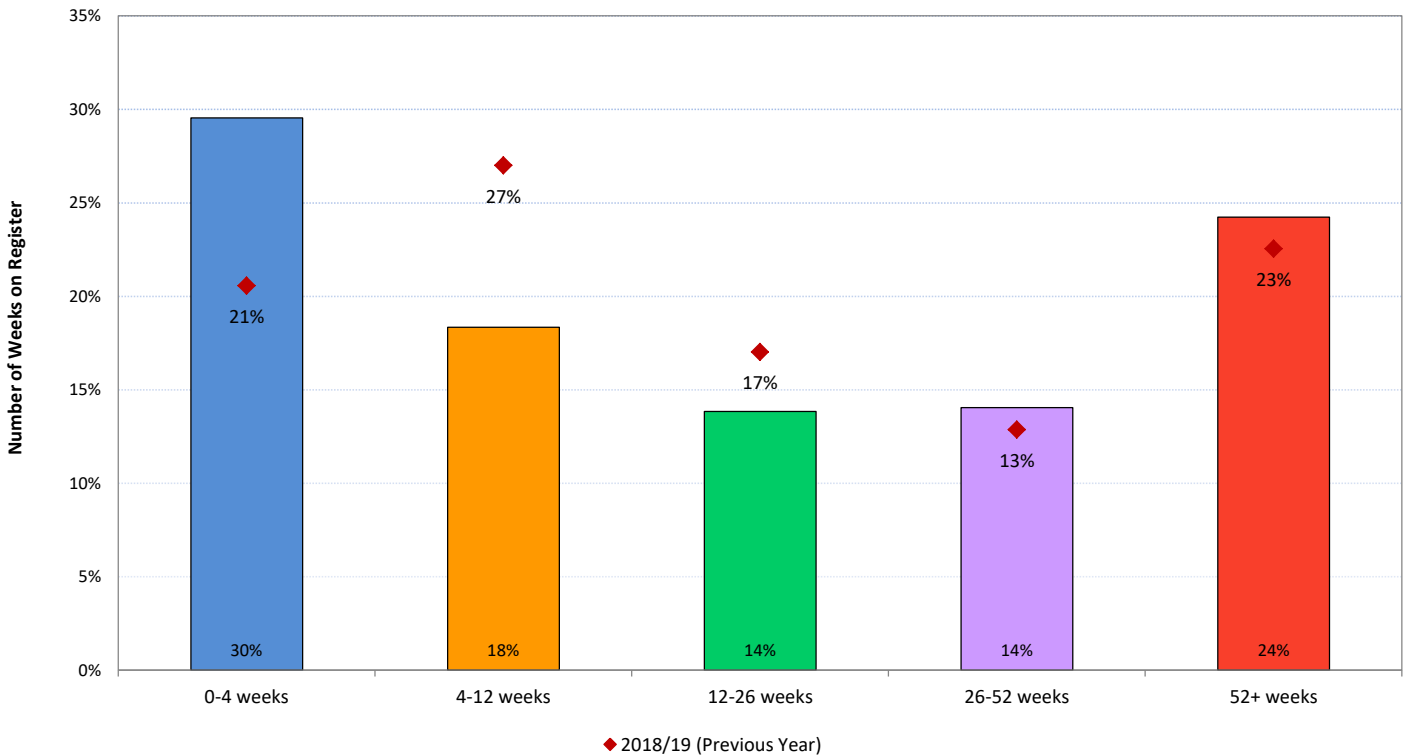


Chart - Duration of time (in weeks) the patients were on EPaCCS by CCG (as %age of CCG Total)

2019-20 (YTD) vs 2018-19



Part 2 - Leeds Clinical Commissioning Group (CCG) EPaCCS Data 2019-20 Report (Q1-Q4)

C2.8a Unplanned hospital usage (A&E and Non-Elective Admissions) by EPaCCS Patients in the last 90 days of their life.

Please note that the data below only relates to patients who have died in a particular quarter and looking back 90 days from their respective date of death.
The actual hospital visits/admissions could have taken place in a previous quarter i.e. a patient who died on 01 April 2019 may have accessed the hospital between Jan to Mar 2019

Activity and Cost Breakdown

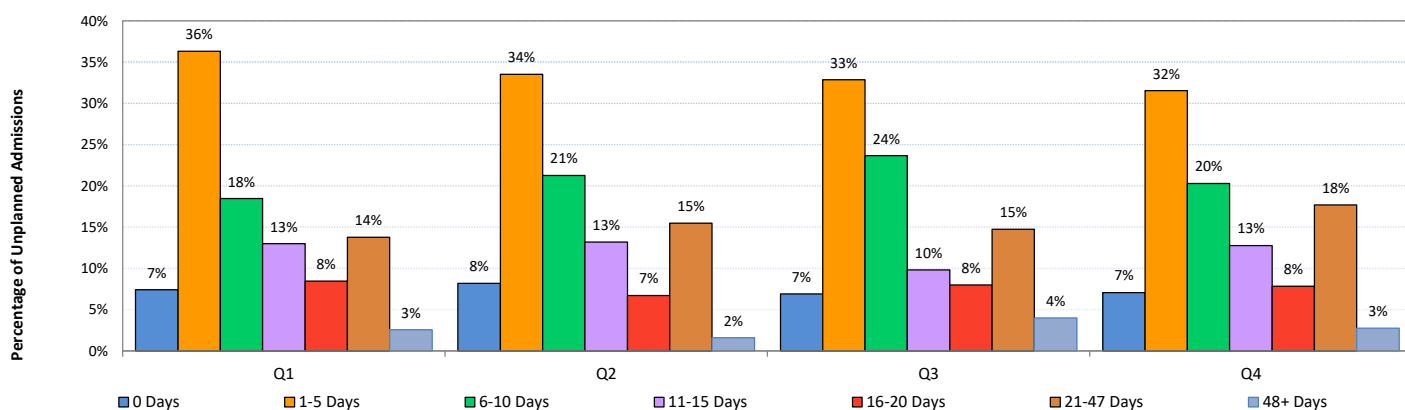
	Q1		Q2		Q3		Q4		Total	
A&E visits	Activity	Cost	Activity	Cost	Activity	Cost	Activity	Cost	Activity	Cost
Unique Patients	373		395		398		398		1564	
Total Activity and Cost	585	£113,752	592	£119,487	596	£120,304	606	£123,074	2379	£476,617
Average Activity and Cost	1.6	£305	1.5	£302	1.5	£302	1.5	£309	1.5	£305
Planned Admissions (EL)	Activity	Cost	Activity	Cost	Activity	Cost	Activity	Cost	Activity	Cost
Unique Patients	19		19		16		24		78	
Total Activity and Cost	19	£92,037	19	£63,818	18	£81,650	24	£74,274	80	£311,779
Average Activity and Cost	1.0	£4,844.05	1.0	£3,359	1.1	£5,103	1.0	£3,095	1.0	£3,997
Unplanned Admissions (NEL)	Activity	Cost	Activity	Cost	Activity	Cost	Activity	Cost	Activity	Cost
Unique Patients	433		464		443		450		1790	
Total Activity and Cost	661	£2,743,199	743	£3,149,965	651	£2,784,640	650	£2,887,404	2705	£11,565,208
Average Activity and Cost	1.5	£6,335	1.6	£6,789	1.5	£6,286	1.4	£6,416	1.5	£6,461

Average and Median Number of Hospital Inpatient bed days/person in last 90 days of life

	Q1		Q2		Q3		Q4	
Total Bed Days Elective	133		90		153		196	
Total Bed Days Non-Elective	7428		8179		7876		8027	
Total	7561		8269		8029		8223	
	Average	Median	Average	Median	Average	Median	Average	Median
Elective Admissions	7.0	4.0	4.7	2.0	9.6	6.0	8.2	2.5
Non-Elective Admissions	17.2	13.0	17.6	14.0	17.8	13.0	17.8	14.0
All Inpatient Admissions	17.3	13.0	17.7	14.0	17.9	13.0	18.1	14.0

Length of Stay Breakdown for Unplanned Admissions (Non-Elective Inpatient)

	Q1		Q2		Q3		Q4		Total	
Length of Stay (Unplanned Admissions)	No. of Admissions		No. of Admissions		No. of Admissions		No. of Admissions		No. of Admissions	
0 Days	49		61		45		46		201	
1-5 Days	240		249		214		205		908	
6-10 Days	122		158		154		132		566	
11-15 Days	86		98		64		83		331	
16-20 Days	56		50		52		51		209	
21-47 Days	91		115		96		115		417	
48+ Days	17		12		26		18		73	
	661		743		651		650		2705	



Percentage of patients with more than 3 Unplanned Admissions (Non-Elective Inpatient)

Q1	Q2	Q3	Q4
3%	4%	2%	1%

**Part 2 - Leeds Clinical Commissioning Group (CCG) EPaCCS Data
2019-20 Report (Q1-Q4)**

C2.8b Reasons for Unplanned hospital usage (Non-Elective Admissions) by EPaCCS Patients in the last 90 days of their life.

Top 5 Reasons for Unplanned Admissions (Year to Date)

HRG Chapter	Primary Diagnosis	Q1	Q2	Q3	Q4
Respiratory System Procedures and Disorders		29.50%	28.94%	32.57%	34.00%
	Diseases of the respiratory system	21.94%	22.34%	26.42%	27.23%
	Neoplasms	6.66%	5.52%	4.61%	4.46%
	Symptoms, signs and abnormal clinical and laboratory findings, not elsewhere classified	0.45%	0.27%	0.46%	1.08%
	Diseases of the circulatory system	0.45%	0.81%	1.08%	1.23%
Gastrointestinal Tract Disorders		9.83%	16.55%	12.14%	14.00%
	Neoplasms	4.39%	7.00%	4.45%	4.77%
	Diseases of the digestive system	3.78%	5.79%	5.38%	5.54%
	Symptoms, signs and abnormal clinical and laboratory findings, not elsewhere classified	1.21%	2.29%	1.23%	1.69%
	Certain infectious and parasitic diseases	0.15%	0.54%	0.77%	1.38%
	Endocrine, nutritional and metabolic diseases	0.15%	0.00%	0.00%	0.46%
	Injury, poisoning and certain other consequences of external causes	0.15%	0.94%	0.31%	0.15%
Nervous System Procedures and Disorders		6.96%	7.67%	4.76%	5.54%
	Diseases of the circulatory system	2.57%	3.63%	1.69%	1.38%
	Neoplasms	1.82%	2.56%	1.84%	2.15%
	Diseases of the nervous system	1.06%	0.40%	0.61%	0.62%
	Symptoms, signs and abnormal clinical and laboratory findings, not elsewhere classified	1.06%	0.94%	0.00%	0.92%
	Injury, poisoning and certain other consequences of external causes	0.45%	0.13%	0.61%	0.46%
Cardiac Disorders		6.51%	9.02%	7.22%	5.38%
	Diseases of the circulatory system	5.45%	7.81%	6.45%	5.08%
	Symptoms, signs and abnormal clinical and laboratory findings, not elsewhere classified	0.76%	1.08%	0.77%	0.15%
	Injury, poisoning and certain other consequences of external causes	0.30%	0.13%	0.00%	0.15%
Hepatobiliary and Pancreatic System Disorders		5.60%	4.17%	3.99%	4.77%
	Neoplasms	3.33%	2.83%	2.00%	2.92%
	Diseases of the digestive system	2.27%	1.35%	2.00%	1.85%