

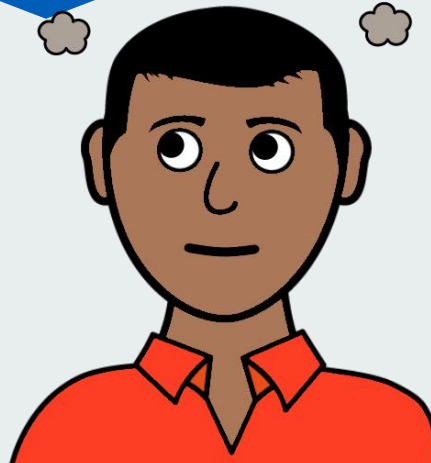


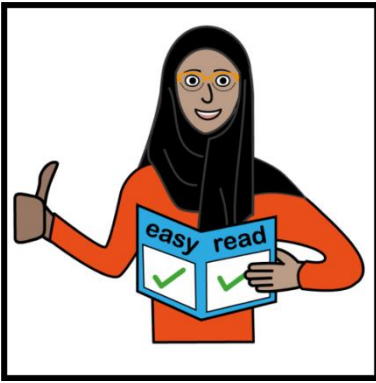
End of life care and support in Leeds

Easy Read

What Does It Cost?

Information about palliative care funding

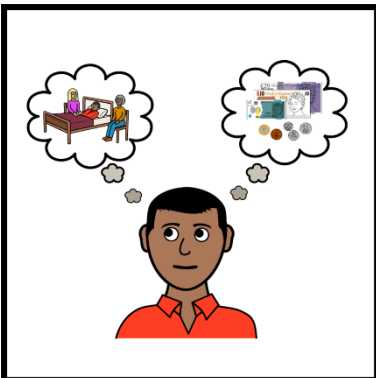




This leaflet uses easy words and pictures.
You might want to ask someone to help you read it.



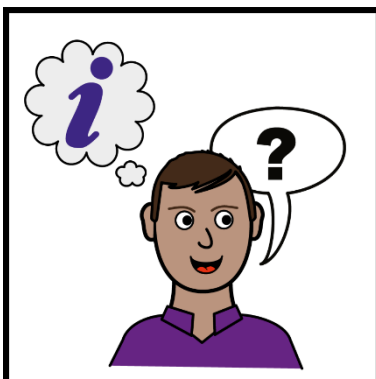
This leaflet gives you information about funding care when someone is coming to the end of their life.



NHS healthcare is always free.
You may have to pay towards social care costs.



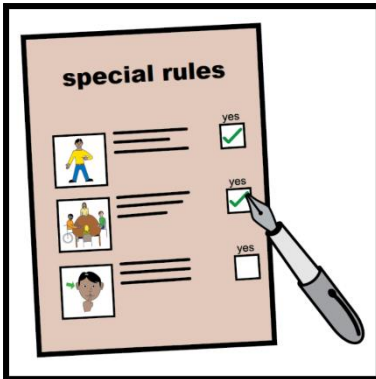
You will have an assessment of your needs. This will look at how much you need and how this will be funded.



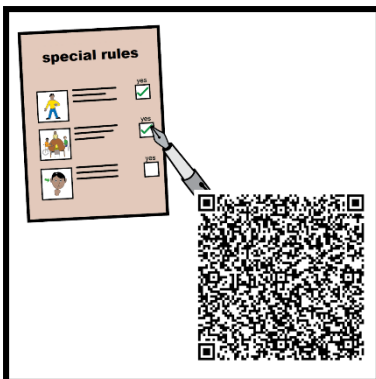
Talk to your health and social care team for more information.



Your doctor can complete a SR1 form when they think you are in your last months of life.



SR1 stands for Special Rules. This gives quick access to higher rate benefits.



For more information visit: [The 'Special Rules'](#) Or scan the QR code.



Speak to your health or social care professional about other benefits you might be able to get.



We have another leaflet to explain NHS Fast Track Funding for end-of-life care.



If you are a Carer for someone who is coming to the end of their life, you can get support too.



You can have a Carer's assessment. This will look at what benefits and support are available to you.



Carers Leeds offers support to carers in Leeds. You can find out more about Carers Leeds by scanning this QR code.



Or you can contact Carers Leeds Advice Line:

Telephone: **0113 380 4300**

(Mon - Thur - 9am - 5pm,

Friday - 9am - 4:30pm)

Email: advice@carersleeds.org.uk