

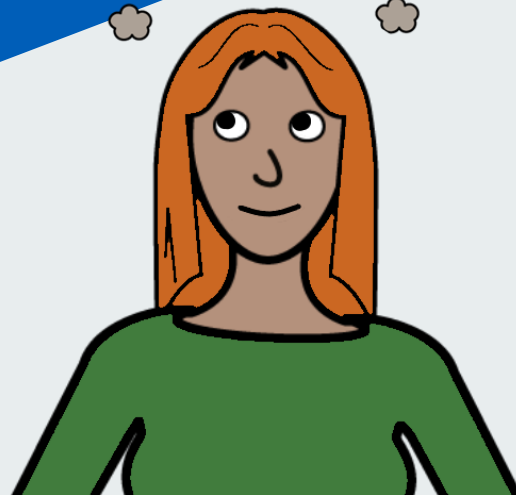


End of life care and support in Leeds

Easy Read

Fast Track Funding for End of Life Care

Information about urgent access to NHS
Continuing Healthcare





This booklet uses easy words and pictures.

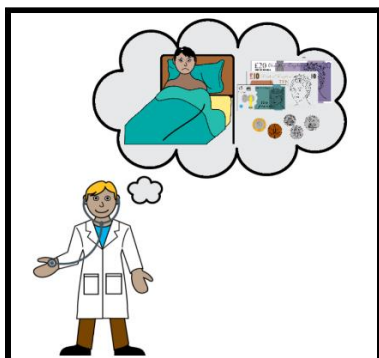
You might want to ask someone to help you read it.



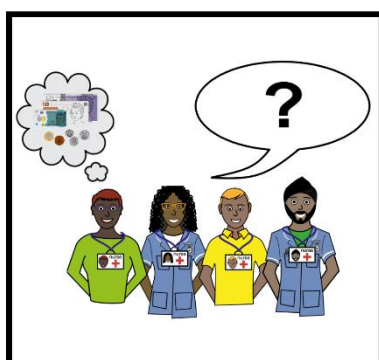
This leaflet is about Fast Track funding for urgent NHS Continuing Healthcare.

Your healthcare team apply for Fast Track funding when they think you are approaching the end of your life.

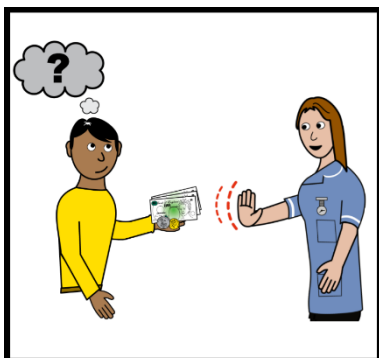
What is Fast Track funding?



Fast Track funding is applied for when you are quickly approaching the end of your life and you need more care.



It means your healthcare team can ask the NHS to urgently pay for the care you need.

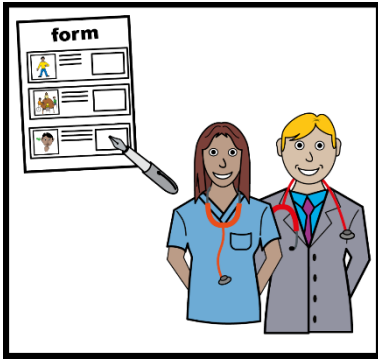


This means you, or people important to you, do not have to pay.

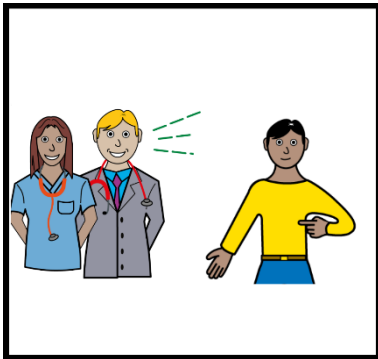


Your care can be given to you in your home or care home. People important to you can be involved too.

What is the application process?



Your healthcare team will fill in a form.



They will talk to you about why they are doing this.



You will be given a Health Case Manager (HCM).

If you have a Learning Disability, you might be given a Learning Disability Case Worker.



The Health Case Manager will discuss what care you need with you and people important to you.

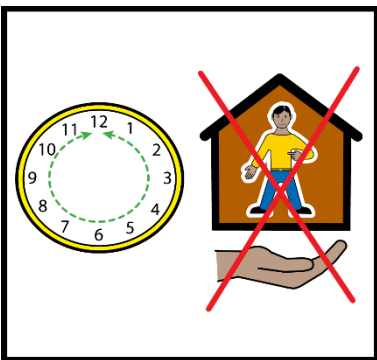
Where will my care be given?



Your healthcare team will try to give the extra care you need in the place of your choice.



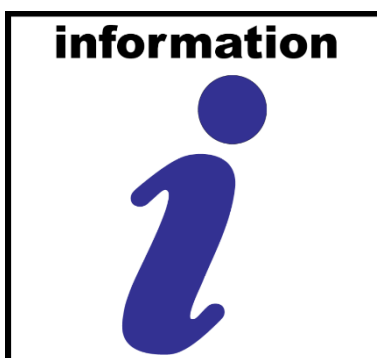
Your care and support plan might include visits from carers and equipment to care for you.



If you need somebody caring for you all of the time, this cannot usually be done in your home.



If you need care at night, you will have an assessment of your nighttime needs.

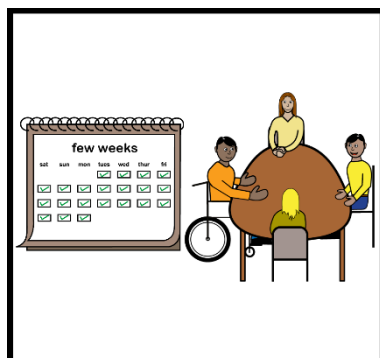


If you get disability benefits, they might be affected. We can provide more information about this.

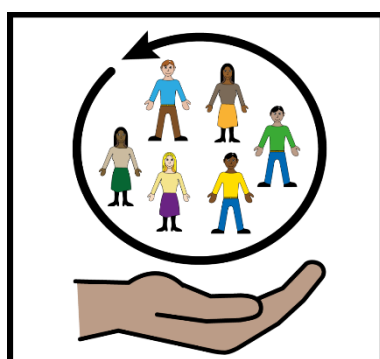
How long does the funding last?



Fast Track funding and your care needs will be reviewed often.



The first review of the funding may be after a few weeks.



Your support will be updated if anything changes.

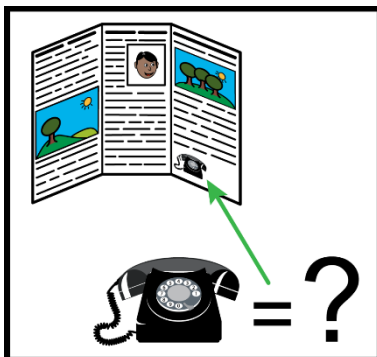
Contacting the team



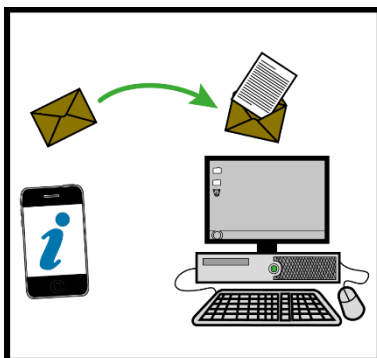
If you need more information about funding, you can:



- Talk to your Health Case Manager



- Call the NHS Continuing Care Team: **0113 2217 600**



- Email the NHS Continuing Care Team: wyicb-leeds.ccadmin@nhs.net