

Leeds Planning Ahead Report (End of Life)

Leeds Health & Care Partnership

2023-24 Report (Q3) - Leeds Citywide

Data Source : SystemOne and EMIS

Data Provided by : Leeds Community Healthcare, St Gemma's Hospice, Sue Ryder Wheatfields Hospice and Public Health Leeds (Integrated Digital Services)

Report Compiled by : Business Intelligence Team, Leeds Office of the ICB

	Page
Summary	3
Part 1 - GP Practice EoL Data	
C1.1a Patients who died and were included on EPaCCS in Leeds, breakdown by PCN (Part 1 of 2)	4
C1.1b Patients who died and were included on EPaCCS in Leeds, breakdown by PCN (Part 2 of 2)	5
C1.2a Percentage of Patients on EPaCCS who have achieved Preferred Place of Death in Leeds, breakdown by PCN (Part 1 of 2)	6
C1.2b Percentage of Patients on EPaCCS who have achieved Preferred Place of Death in Leeds, breakdown by PCN (Part 2 of 2)	7
Part 2 - Leeds City EoL Data	
C2.1 Total patient deaths in and out of hospital and total deaths by	8
C2.2 Patients who died and were included on EPaCCS	8
C2.3 Preferred place of death recorded	9
C2.4 Actual place of death recorded	9
C2.5 Preferred Place of Death Achieved (First Choice) by patients	10
C2.6 Duration of time (in weeks) the patients were on EPaCCS (Leeds)	11
C2.7 Deceased EPaCCS patients who have ReSPECT (Recommended Summary Plan for Emergency Care and Treatment) Code recorded on the system.	12
C2.8 Percentage of deceased EPaCCS patients with 3 or more Unplanned Admissions (Non-Elective Inpatient) in the last 90 days of their life.	12

Leeds Planning Ahead Report (End of Life)

The Electronic Palliative Care Coordination System (EPaCCS) is an electronic record that supports advance care planning conversations and improves the coordination of care for people approaching the end of life.

It provides a summary of key recommendations, preferences and information essential to the high quality care for patients with palliative care needs and those choosing to plan ahead, irrespective of prognosis. Local and national data shows that when patients are given the opportunity to discuss and share their preferences they are more likely to achieve their end of life care goals.

This is a 2023-24 (Q3) Leeds Planning Ahead Report report, combining SystmOne and EMIS data for patients registered from all the practices across Leeds.

To ensure a comprehensive view of advance care planning it collates EPaCCS data entered by all relevant care providers: Leeds Community Healthcare community services, hospice services, community palliative care teams in addition to primary care.

These Leeds Planning Ahead Report (End of Life) reports have been produced to enable you to reflect on end of life care in your practice.

Key findings of the 2023-24 Report (Q3) report are:

- ◆ **47%** of adults who died in Leeds had an EPaCCS record which is higher than previous year (45%).
(EPaCCS Deaths / All Deaths) 2023/24: Q1 (665/1444), Q2 (700/1411), Q3 (732/1574)
(EPaCCS Deaths / All Deaths) 2022/23: Q1 (703/1537), Q2 (663/1492), Q3 (800/1780) and Q4 (742/1598)
- ◆ **80%** achieved their preferred place of death in current reporting period compared with the previous year of 79%; with 69% dying outside of hospital compared to 71.5% in the previous year.
- ◆ The proportion of patients whose EPaCCS record was started more than 3 month before they died is at 59% in current reporting period compared to 54% the previous year.
- ◆ The proportion of patients **without** an actual place of death recorded in current reporting period is **14%** compared to 12% in the previous year.
- ◆ Percentage of patients who died and had a RESPECT Code recorded on the system:
2023/24: Q1 (80%), Q2 (80%), Q3 (83%)
2022/23: Q1 (76%), Q2 (78%), Q3 (76%) and Q4 (80%)
- ◆ Deaths at home recorded in the current reporting period :
2023/24: Q1 213 deaths (32%), Q2 215 deaths (31%), Q3 210 deaths (29%)
2022/23: Q1 249 deaths (35%), Q2 227 deaths (34%), Q3 238 deaths (30%) and Q4 228 deaths (31%)

This report covers a period of continued high demand across the health and social care environment on the system. It is a considerable achievement the proportion of patients being supported in their preferred place has been maintained along with the overall proportion of people with an EPaCCS record. This marks a sustained improvement on 2016-2017 when 33% of adults who died had an EPaCCS record.

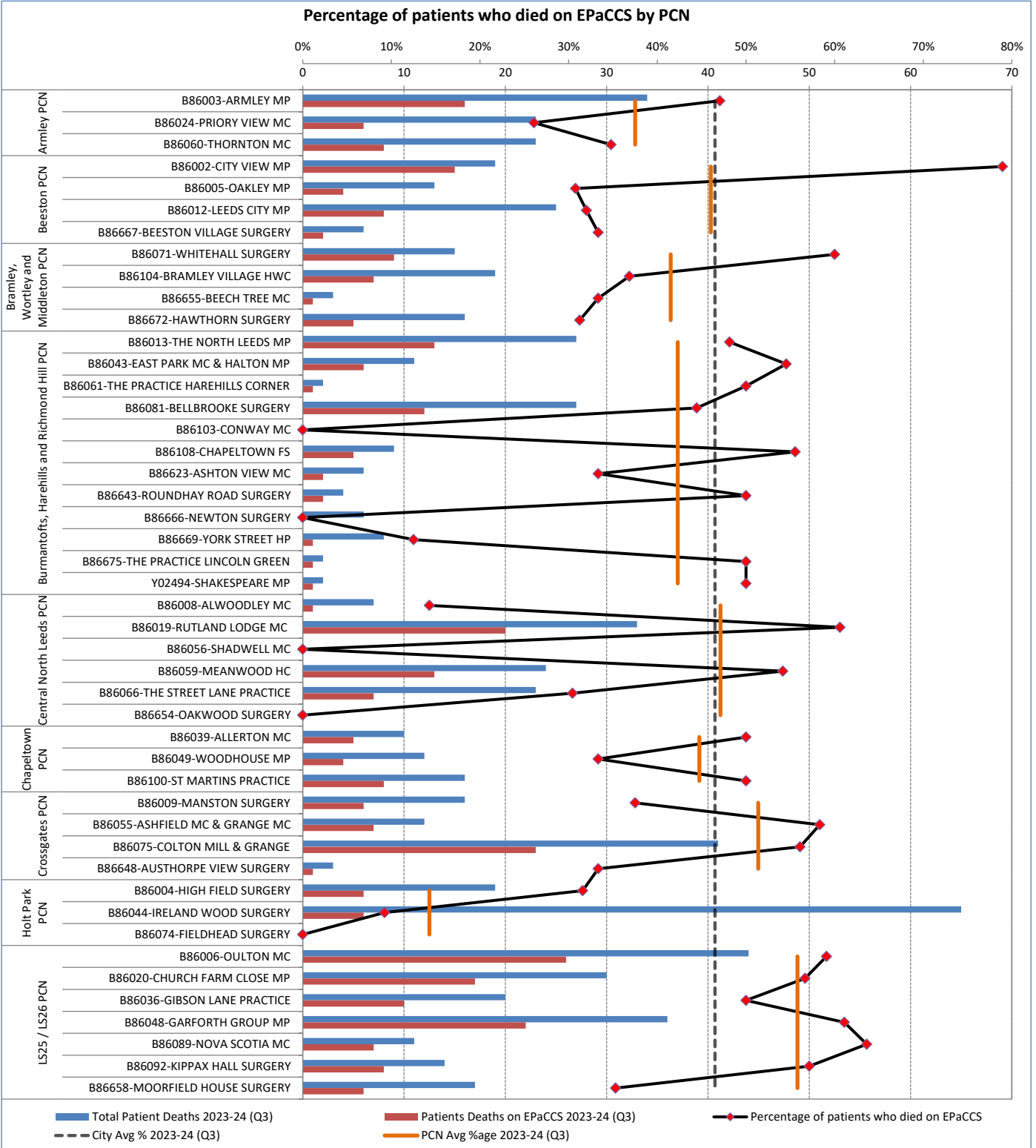
The findings show that that a greater proportion of people are being given opportunities to discuss, document and share their care preferences at an earlier stage and demonstrate improved data quality.

Part 1 - GP Practice EPaCCS Data
2023-24 Report (Q3)

Leeds Health & Care Partnership

C1.1a Patients who died and were included on EPaCCS in Leeds, breakdown by PCN (Part 1 of 2)

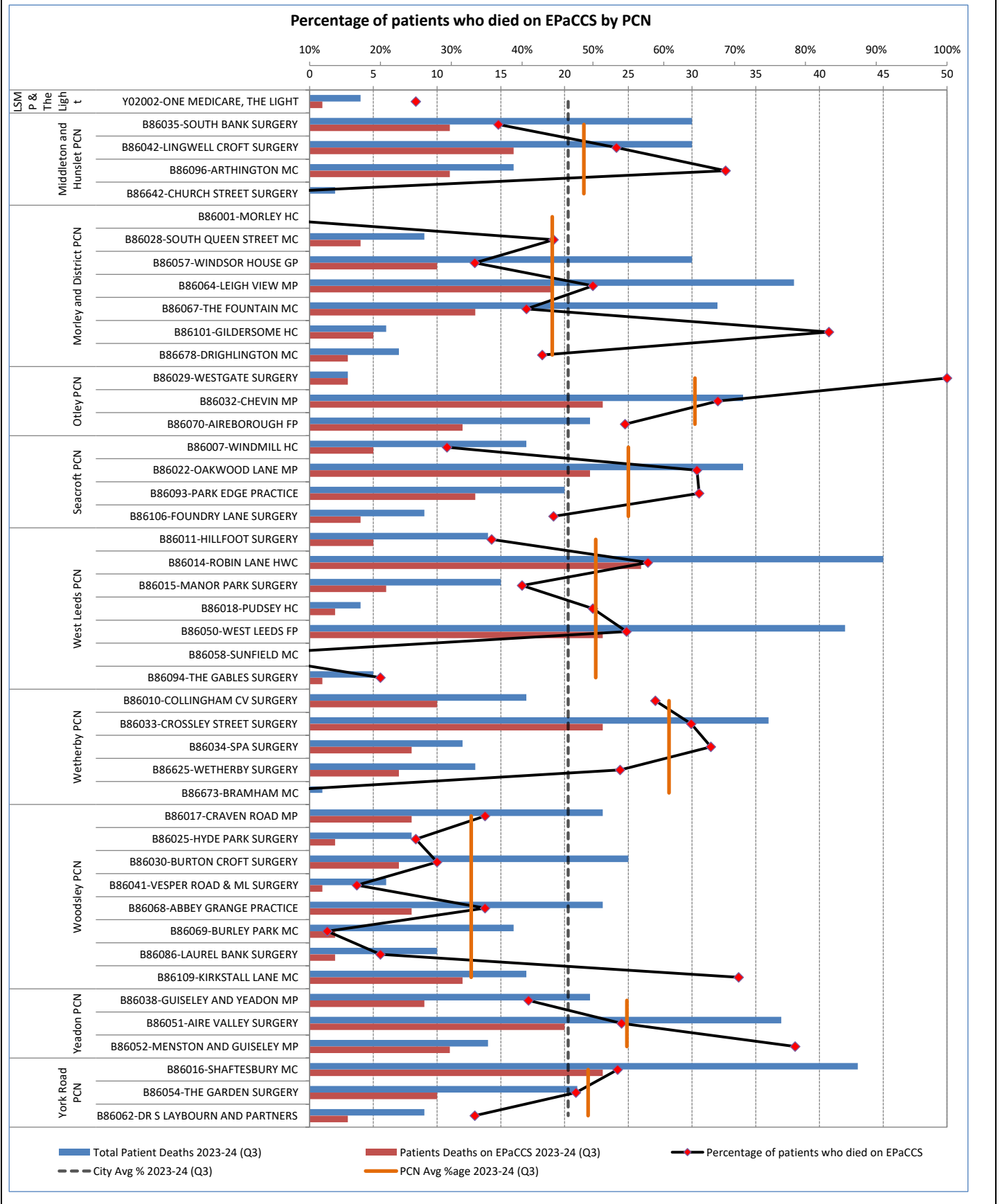
	Q1	Q2	Q3	Q4	Total
a. Number of All patient deaths	1444	1411	1574		4429
b. Number of patients deaths on EPaCCS	665	700	732		2097
c. % of patient deaths on EPaCCS	46%	50%	47%		47%



Part 1 - GP Practice EPaCCS Data
2023-24 Report (Q3)

Leeds Health & Care Partnership

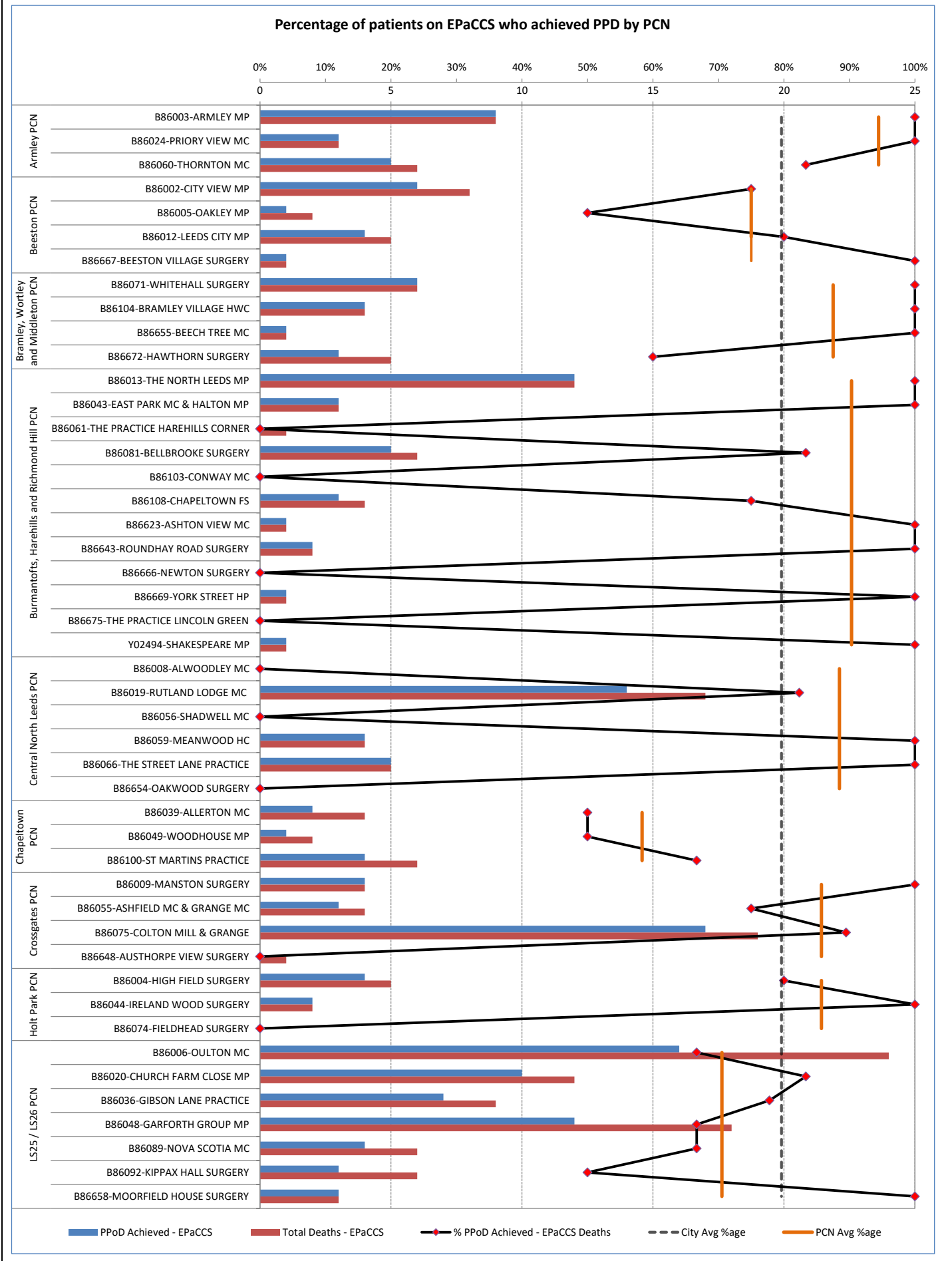
C1.1b Patients who died and were included on EPaCCS in Leeds, breakdown by PCN (Part 2 of 2)



Part 1 - GP Practice EPaCCS Data
2023-24 Report (Q3)

Leeds Health & Care Partnership

C1.2a Percentage of Patients on EPaCCS who have achieved Preferred Place of Death in Leeds, breakdown by PCN (Part 1 of 2)

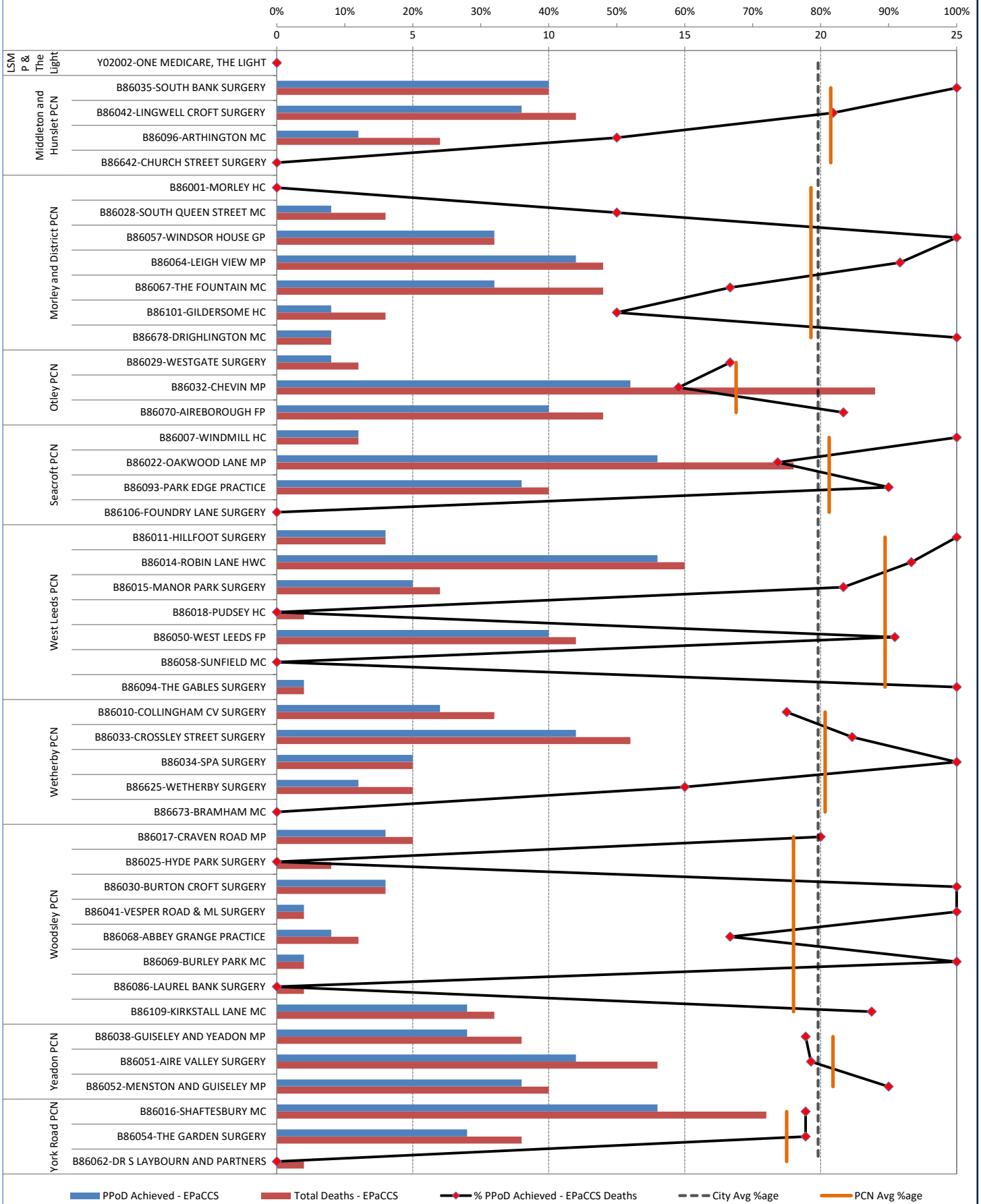


Part 1 - GP Practice EPaCCS Data
2023-24 Report (Q3)

Leeds Health & Care Partnership

C1.2b Percentage of Patients on EPaCCS who have achieved Preferred Place of Death in Leeds, breakdown by PCN (Part 2 of 2)

Percentage of patients on EPaCCS who achieved PPD by PCN

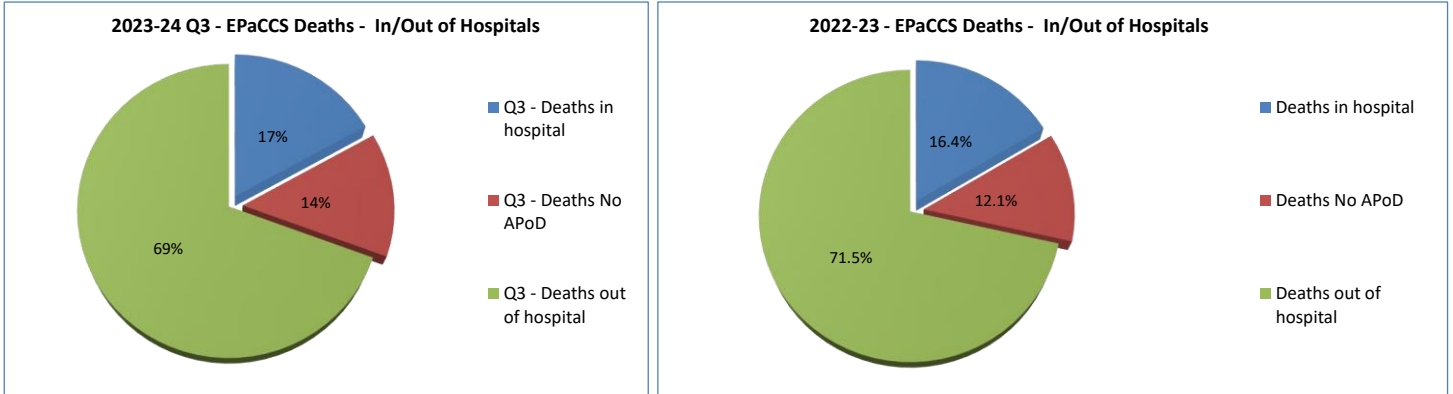


Part 2 - Leeds Health & Care Partnership EoL Data 2023-24 Report (Q3)

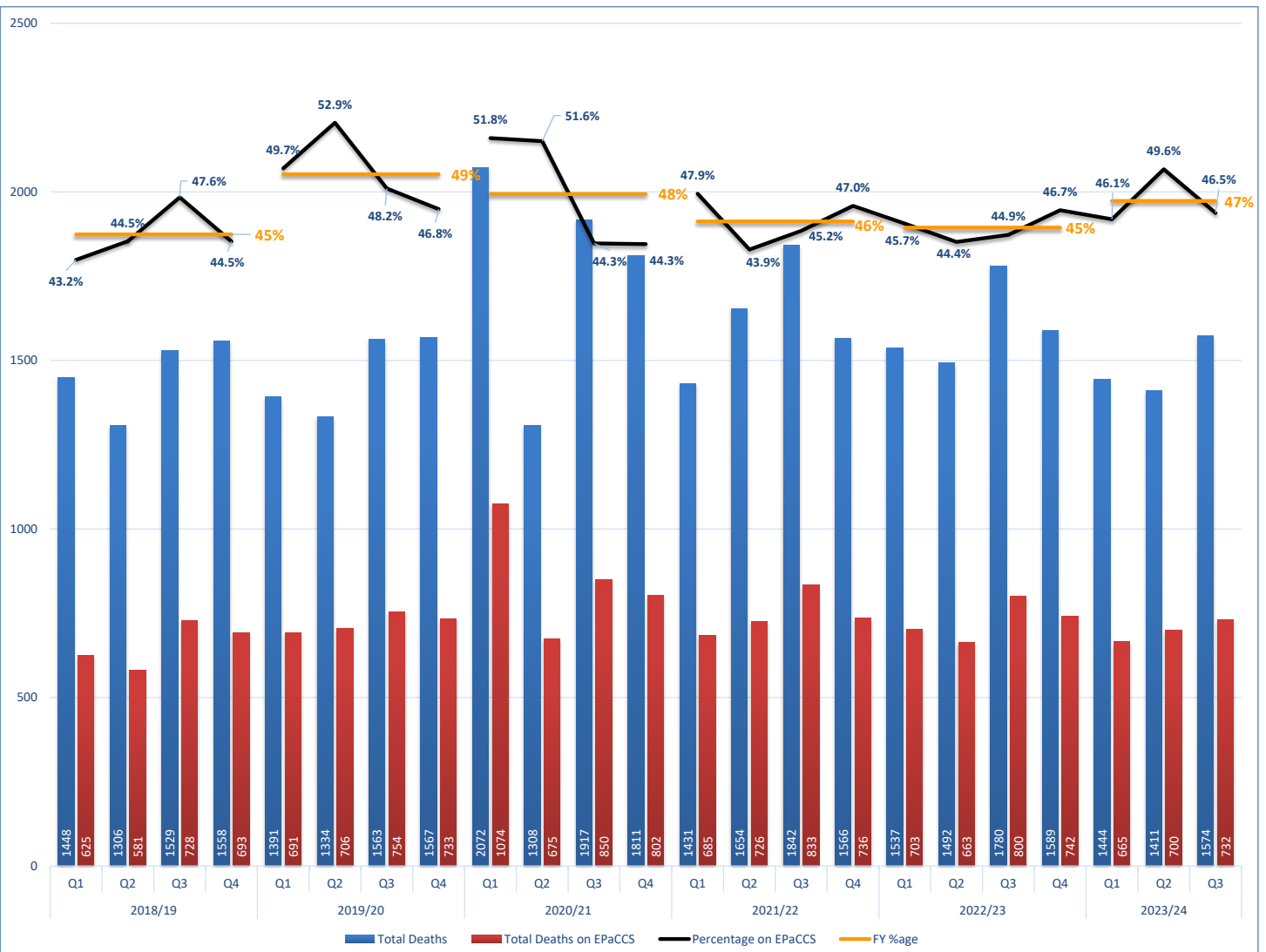
C2.1 Total patient deaths in and out of hospital and total deaths by

	Q1		Q2		Q3		Q4		Total	
1. Total deaths in hospital?	96	14%	97	14%	124	17%			317	15%
2. Total deaths out of hospital?	477	72%	516	74%	508	69%			1501	72%
3. Total number of deaths with No APoD	92	14%	87	12%	100	14%			279	13%
4. Total number of deaths in Leeds	All	EPaCCS	All	EPaCCS	All	EPaCCS	All	EPaCCS	All	EPaCCS
	1444	665	1411	700	1574	732			4429	2097

Percentage deaths in hospital / out of hospital for 2023-24 Report (Q3) compared with previous year.



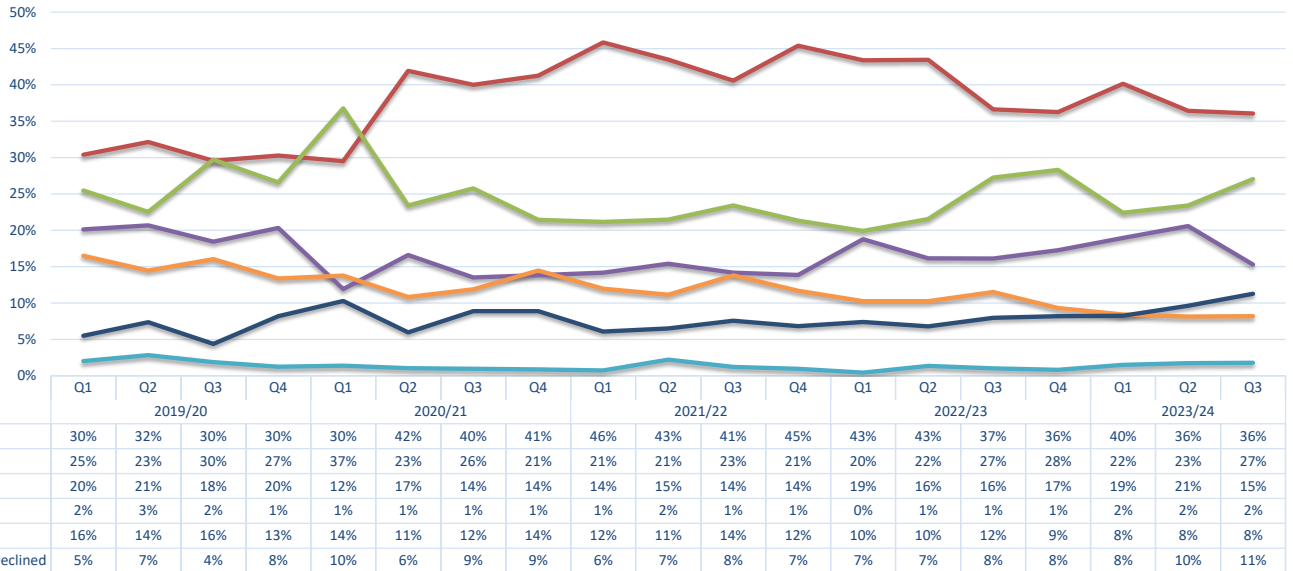
C2.2 Patients who died and were included on EPaCCS



Part 2 - Leeds Health & Care Partnership EoL Data 2023-24 Report (Q3)

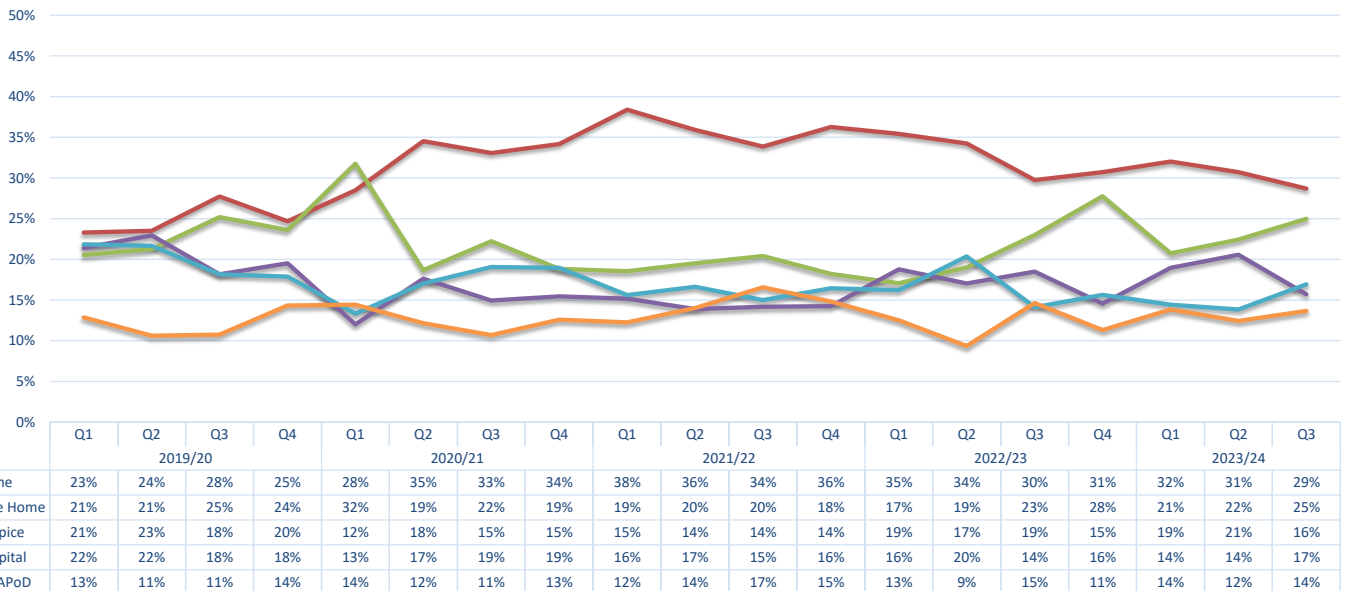
C2.3 Preferred place of death recorded

		Leeds Health & Care Partnership															
	Preferred Place of Death	Q1				Q2				Q3				Q4			
1	Care Home	149				164				198							
2	Home	267				255				264							
3	Hospice	126				144				112							
4	Hospital	10				12				13							
5	No PPOD (preferred place of death)	56				57				60							
6	Undecided/Declined	57				68				85							
	Total	665				700				732							



C2.4 Actual place of death recorded

		Leeds Health & Care Partnership															
	Actual Place of Death	Q1				Q2				Q3				Q4			
1	Care Home	138				157				183							
2	Home	213				215				210							
3	Hospice	126				144				115							
4	Hospital	96				97				124							
5	No APoD (actual place of death)	92				87				100							
6	Other	0				0				0							
	Total	665				700				732							



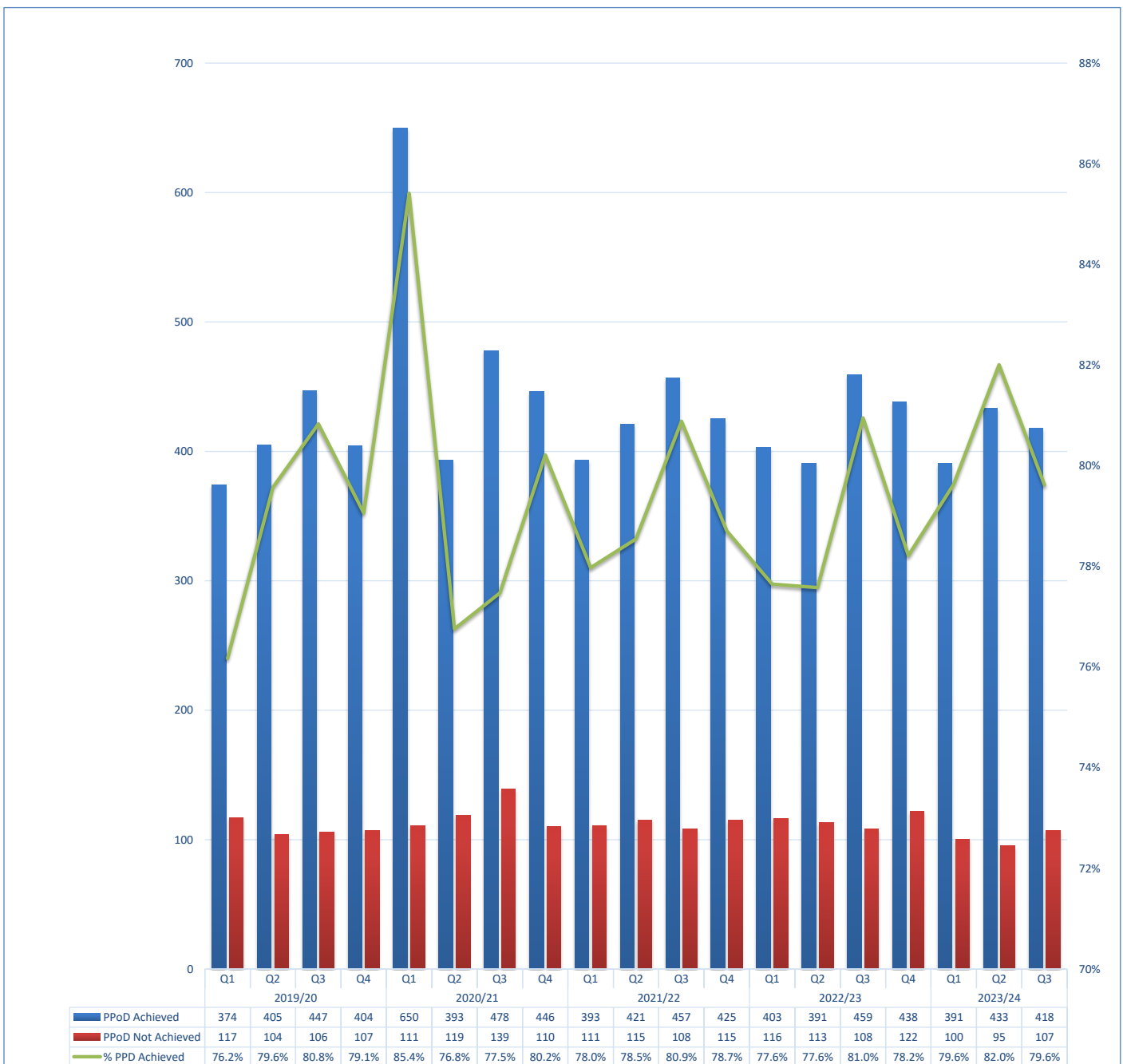
Part 2 - Leeds Health & Care Partnership EoL Data 2023-24 Report (Q3)

C2.5 Preferred Place of Death Achieved (First Choice) by patients

	Qtr	PPoD Achieved	PPoD Not Achieved	% PPD Achieved
Leeds Health & Care Partnership	Q1	391	100	80%
	Q2	433	95	82%
	Q3	418	107	80%
	Q4			
	Total	1242	302	80%

NOTE: Only patients with both PPoD and APoD recorded are included in this analysis

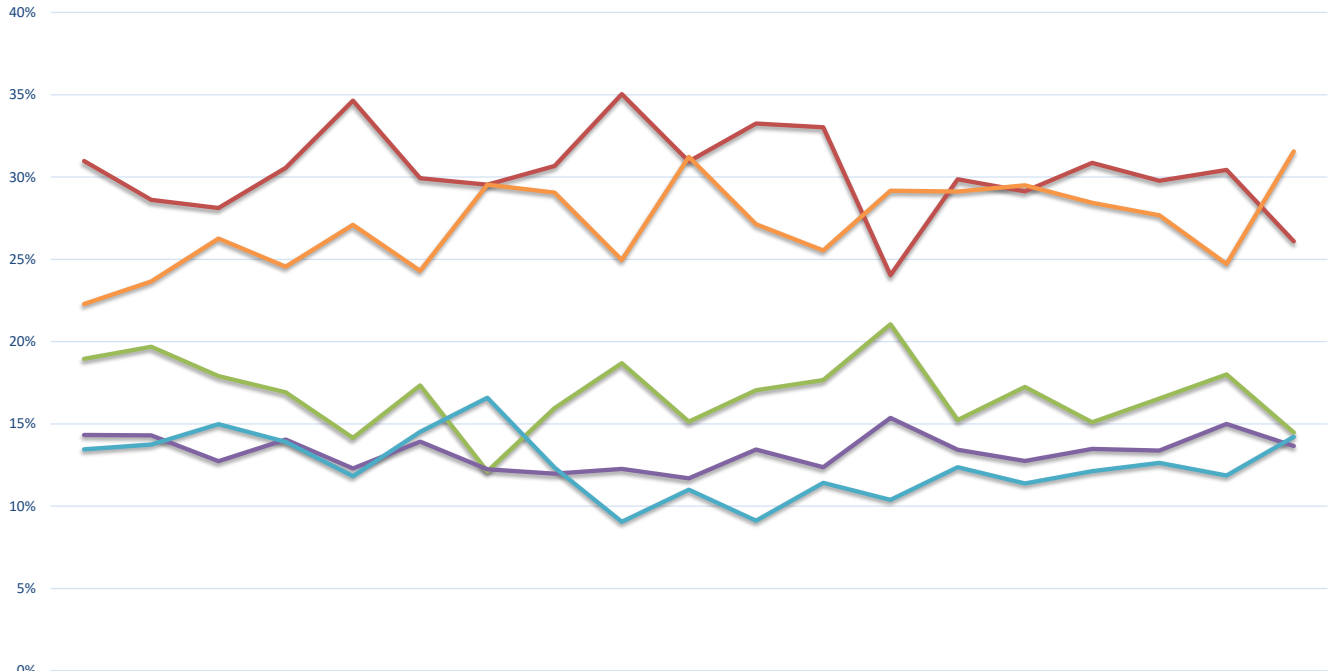
Preferred Place of Death (First Choice) Achieved by patients



Part 2 - Leeds Health & Care Partnership EoL Data 2023-24 Report (Q3)

C2.6 Duration of time (in weeks) the patients were on EPaCCS (Leeds)

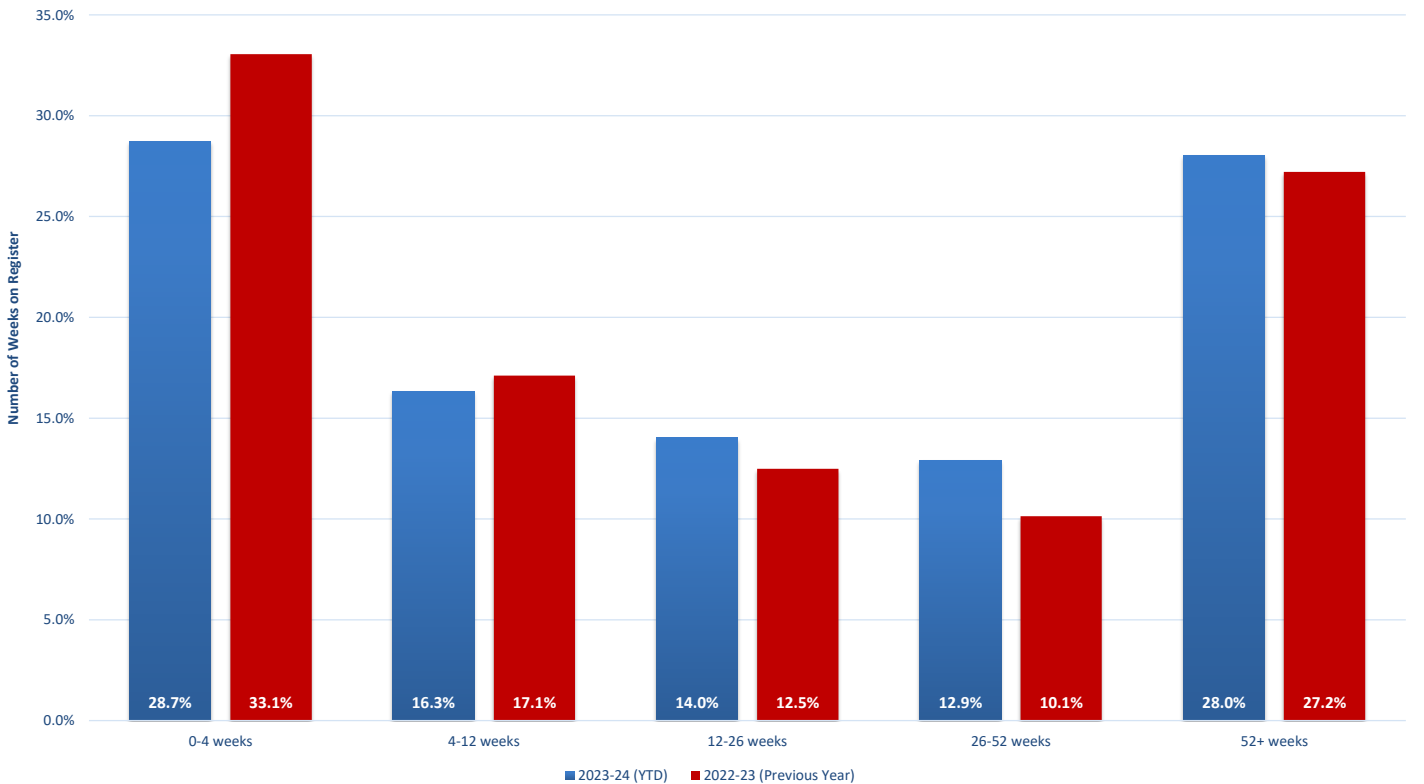
Duration of time (in weeks) the patients were on EPaCCS by Quarter (as %age of Total)



	2019/20				2020/21				2021/22				2022/23				2023/24		
	Q1	Q2	Q3	Q4	Q1	Q2	Q3	Q4	Q1	Q2	Q3	Q4	Q1	Q2	Q3	Q4	Q1	Q2	Q3
0-4 weeks	31%	29%	28%	31%	35%	30%	30%	31%	35%	31%	33%	33%	24%	30%	29%	31%	30%	30%	30%
4-12 weeks	19%	20%	18%	17%	14%	17%	12%	16%	19%	15%	17%	18%	21%	15%	17%	15%	17%	17%	18%
12-26 weeks	14%	14%	13%	14%	12%	14%	12%	12%	12%	12%	13%	12%	15%	13%	13%	13%	13%	15%	14%
26-52 weeks	13%	14%	15%	14%	12%	15%	17%	12%	9%	11%	9%	11%	10%	12%	11%	12%	13%	12%	14%
52+ weeks	22%	24%	26%	25%	27%	24%	30%	29%	25%	31%	27%	26%	29%	29%	30%	28%	28%	25%	32%

Duration of time (in weeks) the patients were on EPaCCS (as %age of Total)

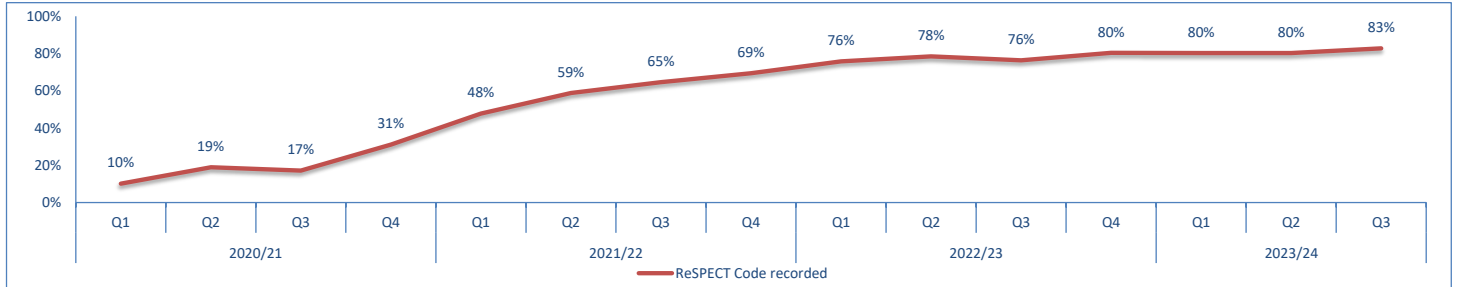
2023-24 (YTD) vs 2022-23 (Previous Year)



Part 2 - Leeds Health & Care Partnership EoL Data 2023-24 Report (Q3)

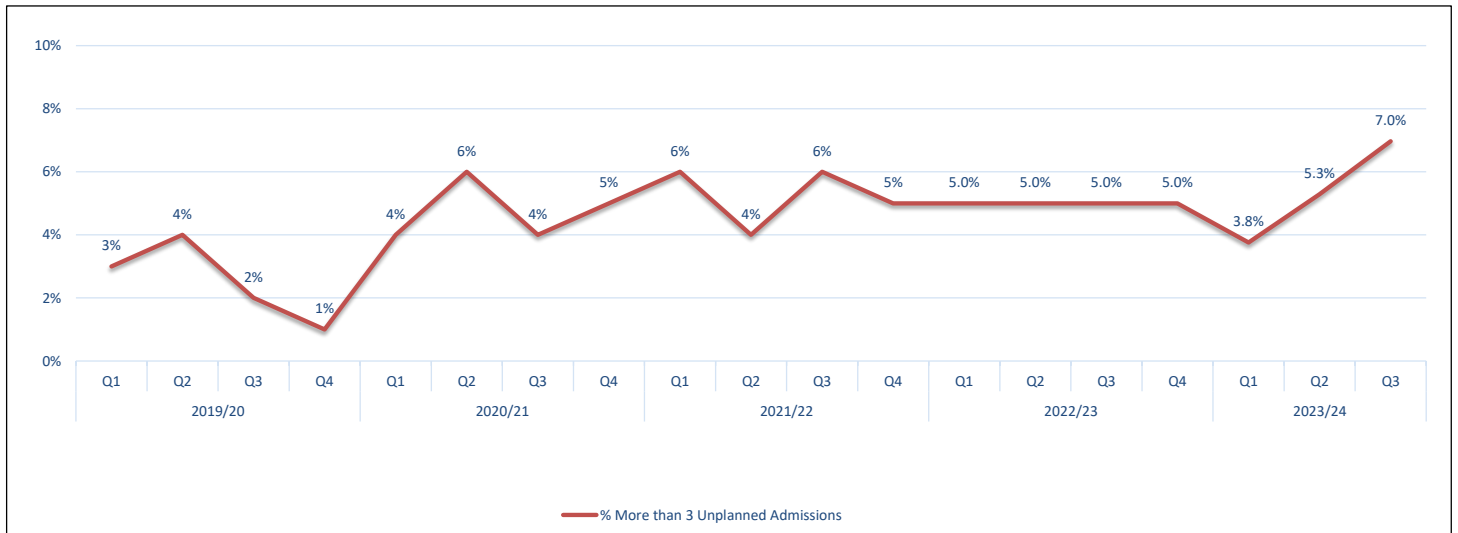
C2.7 Deceased EPaCCS patients who have ReSPECT (Recommended Summary Plan for Emergency Care and Treatment) Code recorded on the system.

Patients with ReSPECT Code	Q1		Q2		Q3		Q4	
	ReSPECT Code recorded	534	80%	562	80%	606	83%	
ReSPECT Code not recorded	131	20%	138	20%	126	17%		
Total	665		700		732			



C2.8 Percentage of deceased EPaCCS patients with 3 or more Unplanned Admissions (Non-Elective Inpatient) in the last 90 days of their life.

	Q1	Q2	Q3	Q4
Leeds Citywide	3.8%	5.3%	7.0%	



PCN	Q1	Q2	Q3	Q4
Armley PCN	3%	4%	7%	
Beeston PCN	4%	0%	10%	
Bramley, Wortley and Middleton PCN	0%	11%	18%	
Burmantofts, Harehills and Richmond Hill PCN	0%	8%	5%	
Central North Leeds PCN	8%	7%	15%	
Chapelton PCN	0%	0%	0%	
Crossgates PCN	3%	10%	3%	
Holt Park PCN	5%	4%	8%	
LS25 / LS26 PCN	4%	5%	3%	
LSMP & The Light	0%	0%	0%	
Middleton and Hunslet PCN	6%	0%	8%	
Morley and District PCN	4%	11%	4%	
Otley PCN	0%	0%	5%	
Seacroft PCN	6%	0%	11%	
West Leeds PCN	2%	3%	5%	
Wetherby PCN	5%	14%	13%	
Woodsley PCN	8%	7%	5%	
Yeadon PCN	3%	4%	8%	
York Road PCN	4%	6%	8%	