



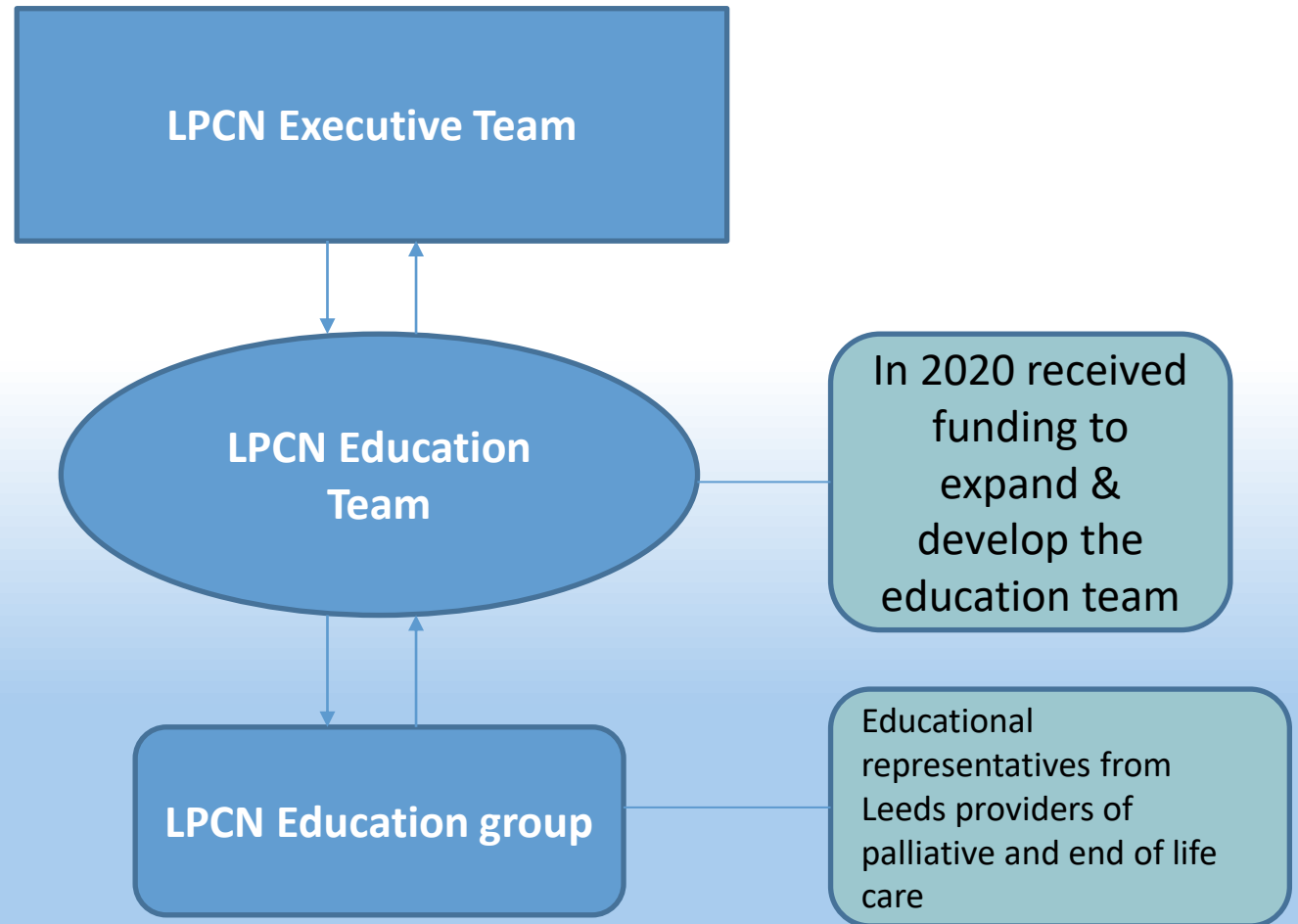
# Leeds Palliative Care Network

**LPCN Education**  
**Overview and update**

# LPCN Education

- ❖ Introductions
- ❖ Brief overview of the LPCN Education team
- ❖ Update on the programme of work in 22-23
- ❖ Future plans for citywide education moving forward

# LPCN Education Structure



# The Current LPCN Education Team structure

**Education Lead**  
(Band 8/ 2 hours per week  
In post 6 years)  
Trish Stockton

**LPCN Clinical Practice  
Educator**  
(Band 7/30 hours per week  
In post 15 months)  
Leigh Taylor

**LPCN Clinical  
Administrator**  
(Band 4/ 30 hours per week  
In post 19 months)  
Saima Qayyum

# LPCN Education Team & roles

## LPCN Education Lead

Trish Stockton

- Leadership role/Member of the exec team
- Leads/ supports citywide education strategic development
- Oversees programme of work/ project development
- Representative at regional level for Leeds
- Manages the LPCN Education team

## LPCN Clinical Practice Educator

Leigh Taylor

- Supports other educators/ facilitators in developing and delivering education in their own organisations
- Supports the education programme/ strategic work
- Promotes collaboration and city wide working
- Leads/ supports specific city wide education projects e.g. ECHO hub, implementation of ReSPECT, advance care planning, homelessness

## LPCN Education Administrator

Saima Qayyum

- Sets up and co-ordinates the delivery of city wide education programmes, including Leeds ECHO programmes
- Maintains city wide training record systems
- Updates the LPCN website, particularly the education pages
- Supports communication to all provider organisations about citywide education

# LPCN Education programme

Priorities	2022 -23	2023 - 24
<p>Planning Ahead and ReSPECT</p> <p>New signatories or signatory's who have not attended DNACPR and ReSPECT training.</p>	<p>Training sessions Oct 22 Jan and March 23</p>	<p>June, Sept, Dec 23</p> <p>Plan further session 2024</p>
Echo® Network	<p>Hub training Scoping GP and PCN Programme</p>	<p>GP and PCN programme June-Dec AHP (PT/OT) Programme June More varied programmes</p>
Leeds Palliative Care Education Strategy for Care Homes	<p>Workshops:- stakeholders Research Analysis of data</p>	<p>Further workshops Strategic goals Implementing</p>

# LPCN Education programme

Priorities	2022-23	2023- 24
ACP education City wide Review	Research local offer of education Scope local and national resources and guidelines.	Complete report
Homelessness Education - Support workers	Pilot study Business case bid	Organisation and delivery of session 6 education days
LPCN Education pages	Development	Updating
Communication skills		Review of city wide provision Review of strategy

# The Partners

