

Leeds Planning Ahead Report (End of Life)

Leeds Health & Care Partnership

2022/23 Report (Q1-Q4) - Leeds Citywide

Data Source : SystmOne and EMIS

Data Provided by : Leeds Community Healthcare, St Gemma's Hospice, Sue Ryder Wheatfields Hospice and Public Health Leeds (Integrated Digital Services)

Report Compiled by : Business Intelligence Team, Leeds Office of the ICB

	Page
Summary	3
Part 1 - GP Practice EoL Data	
C1.1a Patients who died and were included on EPaCCS in Leeds, breakdown by PCN (Part 1 of 2)	4
C1.1b Patients who died and were included on EPaCCS in Leeds, breakdown by PCN (Part 2 of 2)	5
C1.2a Percentage of Patients on EPaCCS who have achieved Preferred Place of Death in Leeds, breakdown by PCN (Part 1 of 2)	6
C1.2b Percentage of Patients on EPaCCS who have achieved Preferred Place of Death in Leeds, breakdown by PCN (Part 2 of 2)	7
Part 2 - Leeds City EoL Data	
C2.1 Total patient deaths in and out of hospital and total deaths by	8
C2.2 Patients who died and were included on EPaCCS	8
C2.3 Preferred place of death recorded	9
C2.4 Actual place of death recorded	9
C2.5 Preferred Place of Death Achieved (First Choice) by patients	10
C2.6 Duration of time (in weeks) the patients were on EPaCCS (Leeds)	11
C2.7 Deceased EPaCCS patients who have ReSPECT (Recommended Summary Plan for Emergency Care and Treatment) Code recorded on the system.	12
C2.8 Patients with a Cancer Diagnosis recorded at any point in life.	12
C2.9 Percentage of deceased EPaCCS patients with 3 or more Unplanned Admissions (Non-Elective Inpatient) in the last 90 days of their life.	12
C2.10 Unplanned hospital usage (A&E and Non-Elective Admissions) by EPaCCS Patients in the last 90 days of their life.	13

Leeds Planning Ahead Report (End of Life)

The Electronic Palliative Care Coordination System (EPaCCS) is an electronic record that supports advance care planning conversations and improves the coordination of care for people approaching the end of life.

It provides a summary of key recommendations, preferences and information essential to the high quality care for patients with palliative care needs and those choosing to plan ahead, irrespective of prognosis. Local and national data shows that when patients are given the opportunity to discuss and share their preferences they are more likely to achieve their end of life care goals.

This is a 2022-23 (Q1-Q4) Leeds Planning Ahead Report report, combining SystemOne and EMIS data for patients registered from all the practices across Leeds.

To ensure a comprehensive view of advance care planning it collates EPaCCS data entered by all relevant care providers: Leeds Community Healthcare community services, hospice services, community palliative care teams in addition to primary care.

These Leeds Planning Ahead Report (End of Life) reports have been produced to enable you to reflect on end of life care in your practice.

Key findings of the 2022/23 Report (Q1-Q4) report are:

- ◆ **45%** of adults who died in Leeds had an EPaCCS record which is a slightly lower than previous year (46%).
(EPaCCS Deaths / All Deaths) **2022/23: Q1 (703/1537), Q2 (663/1492) , Q3 (800/1780) and Q4 (742/1598)**
(EPaCCS Deaths / All Deaths) 2021/22: Q1 (685/1431) , Q2 (726/1654) , Q3 (833/1842) and Q4 (736/1566)
- ◆ **79%** achieved their preferred place of death in current reporting period compared which **at par** with the previous year; with 71.5% dying outside of hospital compared to 70% in the previous year.
- ◆ The proportion of patients whose EPaCCS record was started more than 3 month before they died is at 54% in current reporting period compared to 50% the previous year.
- ◆ The proportion of patients **without** an actual place of death recorded has **decreased** in current reporting period to **12.5%** from 14% last year.
- ◆ Percentage of patients who died and had a RESPECT Code recorded on the system:
2022/23: Q1 (76%), Q2 (78%), Q3 (76%) and Q4 (80%)
2021/22: Q1 (48%), Q2 (59%), Q3 (65%) and Q4 (69%)
- ◆ Deaths at home recorded in the current reporting period :
2022/23: Q1 249 deaths (35%), Q2 227 deaths (34%), Q3 238 deaths (30%) and Q4 228 deaths (31%)
2021/22: Q1 263 deaths (38%), Q2 261 deaths (36%), Q3 282 deaths (34%) and Q4 267 deaths (36%)

This report covers a period of continued high demand across the health and social care environment on the system. It is a considerable achievement the proportion of patients being supported in their preferred place has been maintained along with the overall proportion of people with an EPaCCS record. This marks a sustained improvement on 2016-2017 when 33% of adults who died had an EPaCCS record.

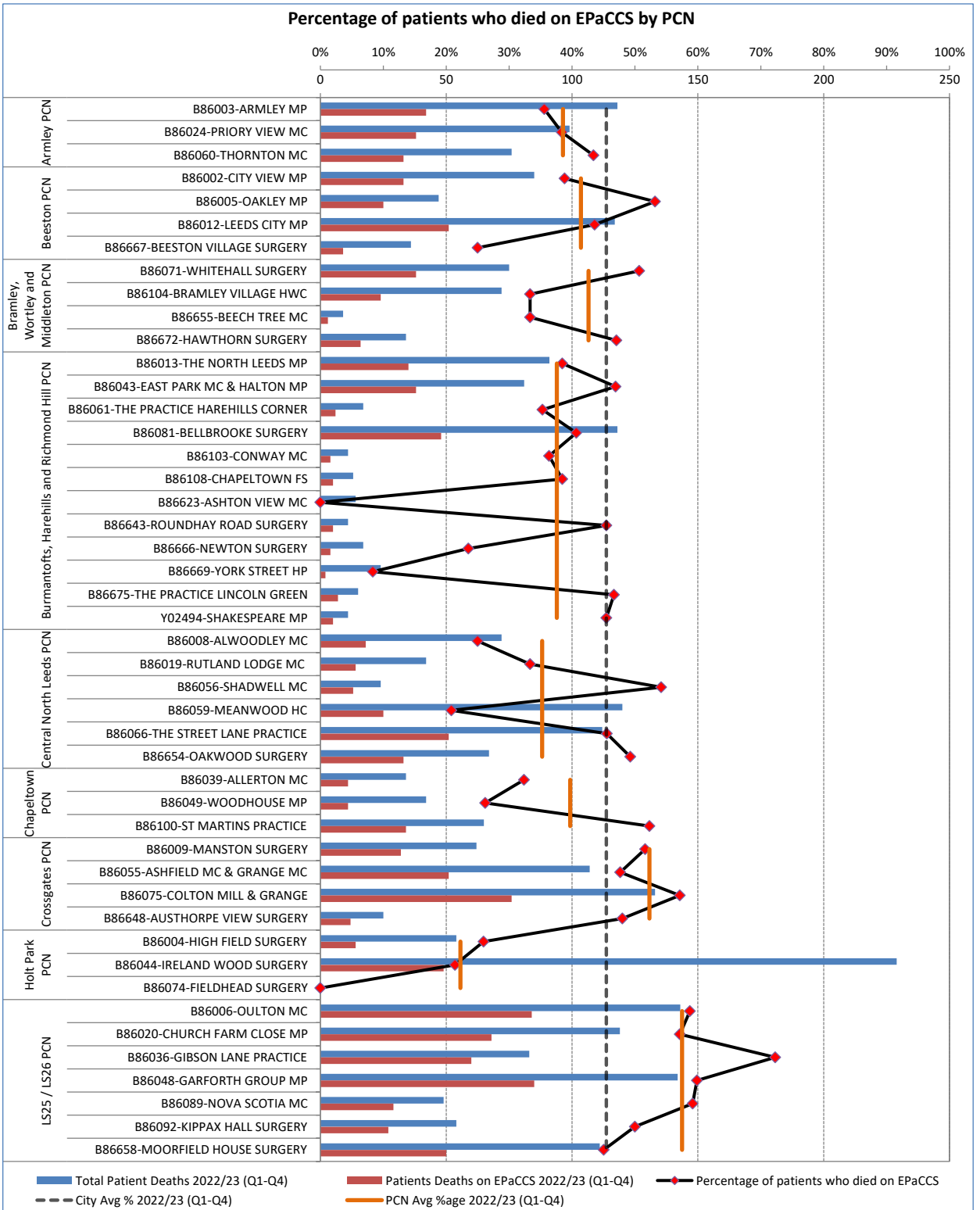
The findings show that that a greater proportion of people are being given opportunities to discuss , document and share their care preferences at an earlier stage and demonstrate improved data quality.

Part 1 - GP Practice EPaCCS Data
2022/23 Report (Q1-Q4)

Leeds Health & Care Partnership

C1.1a Patients who died and were included on EPaCCS in Leeds, breakdown by PCN (Part 1 of 2)

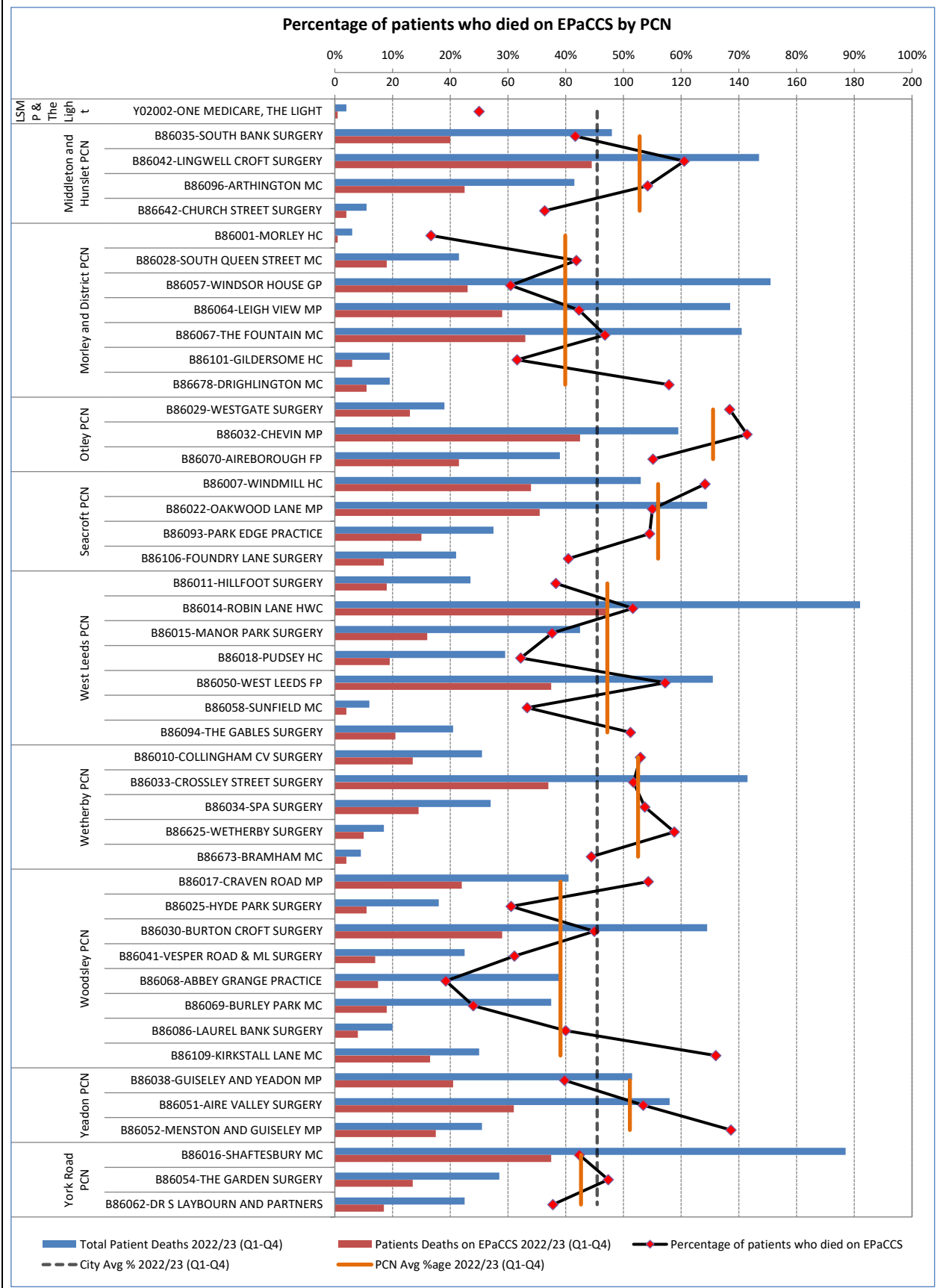
	Q1	Q2	Q3	Q4	Total
a. Number of All patient deaths	1537	1492	1780	1589	6398
b. Number of patients deaths on EPaCCS	703	663	800	742	2908
c. % of patient deaths on EPaCCS	46%	44%	45%	47%	45%



Part 1 - GP Practice EPaCCS Data
2022/23 Report (Q1-Q4)

Leeds Health & Care Partnership

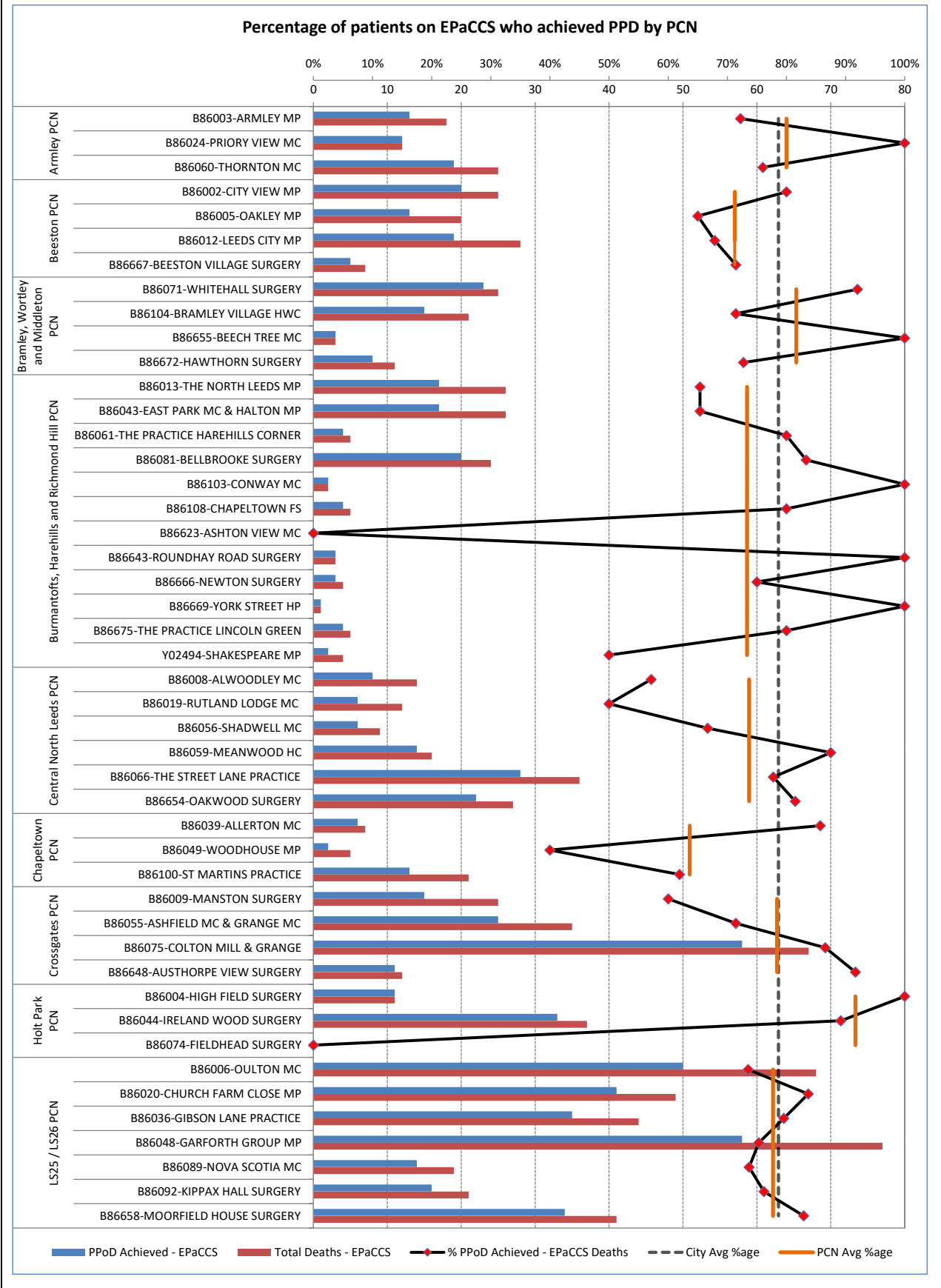
C1.1b Patients who died and were included on EPaCCS in Leeds, breakdown by PCN (Part 2 of 2)



Part 1 - GP Practice EPaCCS Data
2022/23 Report (Q1-Q4)

Leeds Health & Care Partnership

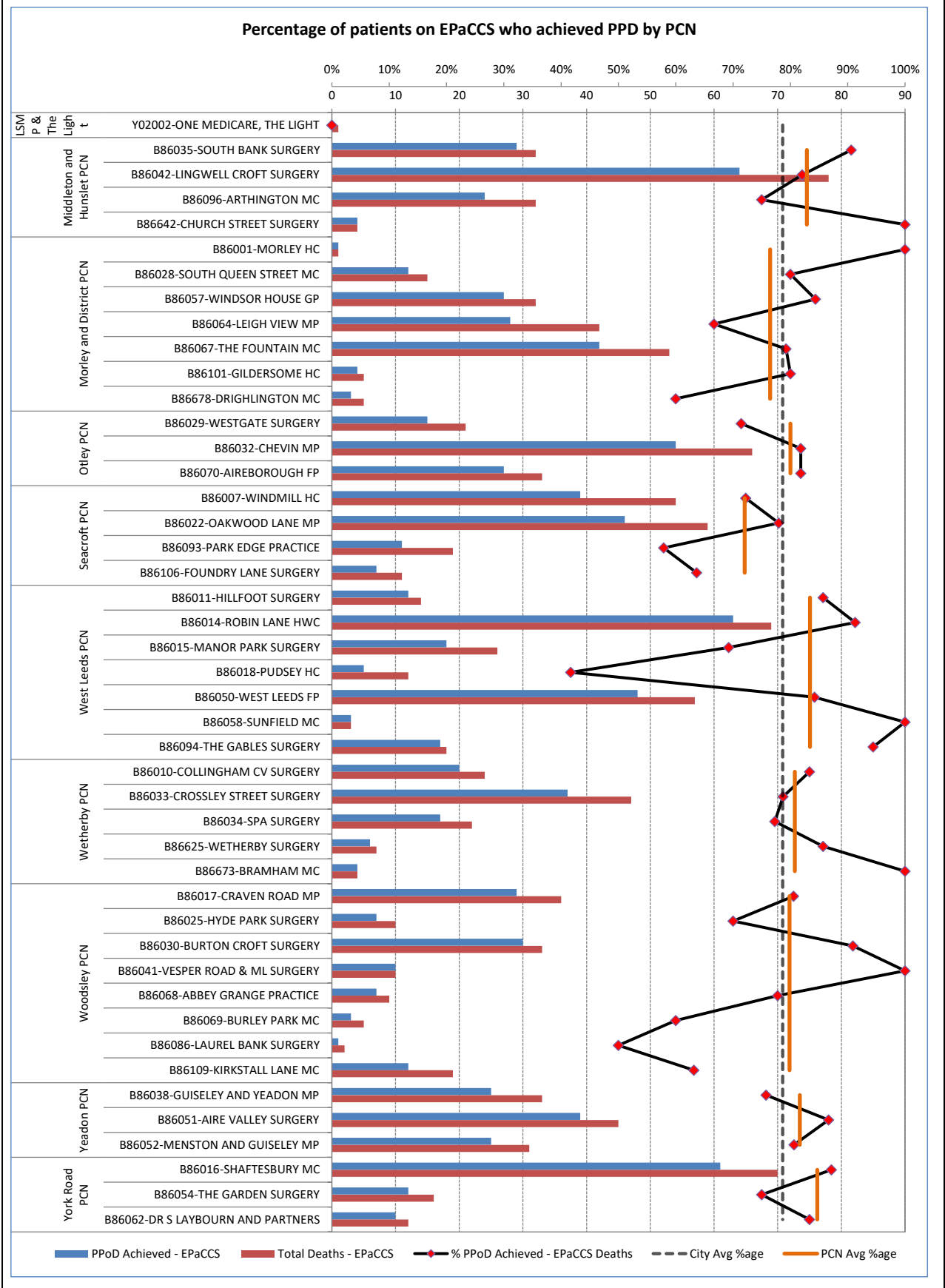
C1.2a Percentage of Patients on EPaCCS who have achieved Preferred Place of Death in Leeds, breakdown by PCN (Part 1 of 2)



Part 1 - GP Practice EPaCCS Data
2022/23 Report (Q1-Q4)

Leeds Health & Care Partnership

C1.2b Percentage of Patients on EPaCCS who have achieved Preferred Place of Death in Leeds, breakdown by PCN (Part 2 of 2)



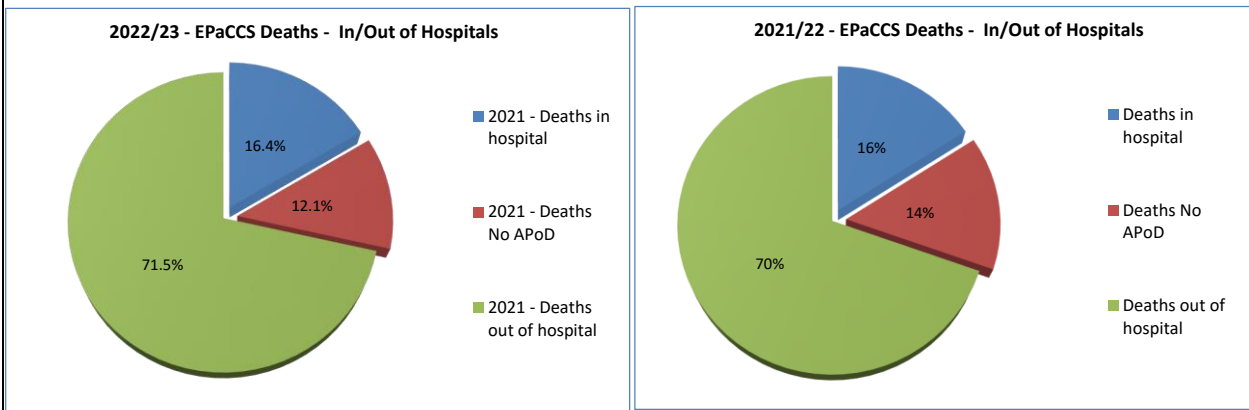
Part 2 - Leeds Health & Care Partnership EoL Data 2022/23 Report (Q1-Q4)

C2.1 Total patient deaths in and out of hospital and total deaths by

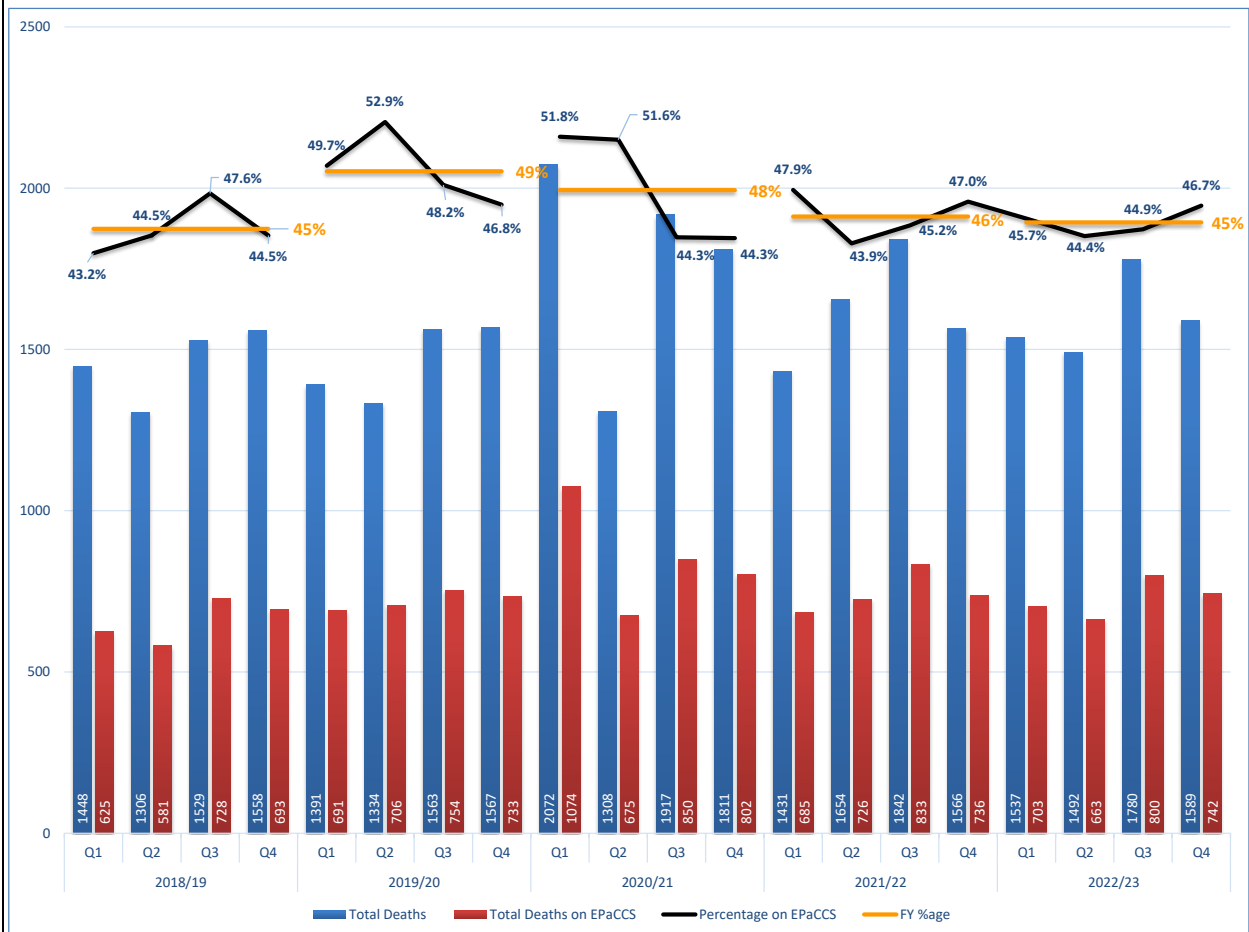
	Q1		Q2		Q3		Q4		Total	
1. Total deaths in hospital?	114	16%	135	20%	113	14%	116	16%	478	16%
2. Total deaths out of hospital?	501	71%	466	70%	570	71%	542	73%	2079	71%
3. Total number of deaths with No APoD	88	13%	62	9%	117	15%	84	11%	351	12%

	All	EPaCCS	All	EPaCCS	All	EPaCCS	All	EPaCCS	All	EPaCCS
4. Total number of deaths in Leeds	1537	703	1492	663	1780	800	1589	742	6398	2908

Percentage deaths in hospital / out of hospital for 2022/23 Report (Q1-Q4) compared with previous year.



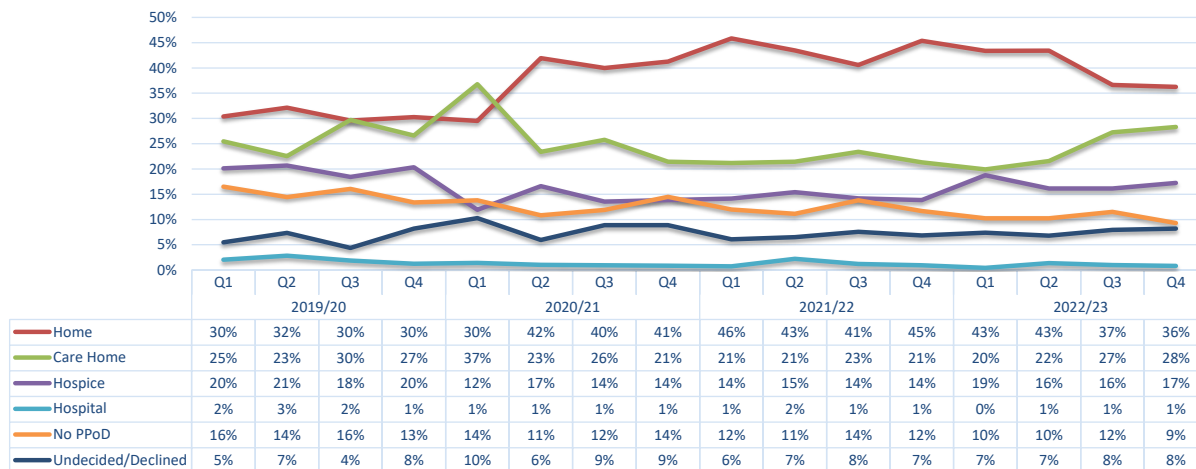
C2.2 Patients who died and were included on EPaCCS



Part 2 - Leeds Health & Care Partnership EoL Data 2022/23 Report (Q1-Q4)

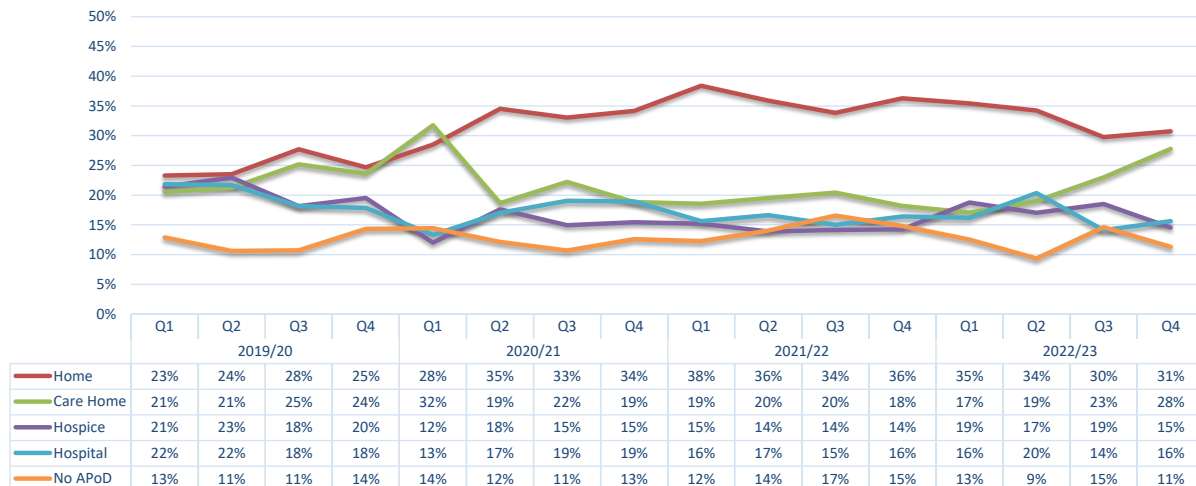
C2.3 Preferred place of death recorded

		Leeds Health & Care Partnership			
	Preferred Place of Death	Q1	Q2	Q3	Q4
1	Care Home	140	143	218	210
2	Home	305	288	293	269
3	Hospice	132	107	129	128
4	Hospital	3	9	8	6
5	No PPOD (preferred place of death)	72	68	92	69
6	Undecided/Declined	51	48	60	60
	Total	703	663	800	742



C2.4 Actual place of death recorded

		Leeds Health & Care Partnership			
	Actual Place of Death	Q1	Q2	Q3	Q4
1	Care Home	120	126	184	206
2	Home	249	227	238	228
3	Hospice	132	113	148	108
4	Hospital	114	135	113	116
5	No APoD (actual place of death)	88	62	117	84
6	Other	0	0	0	0
	Total	703	663	800	742



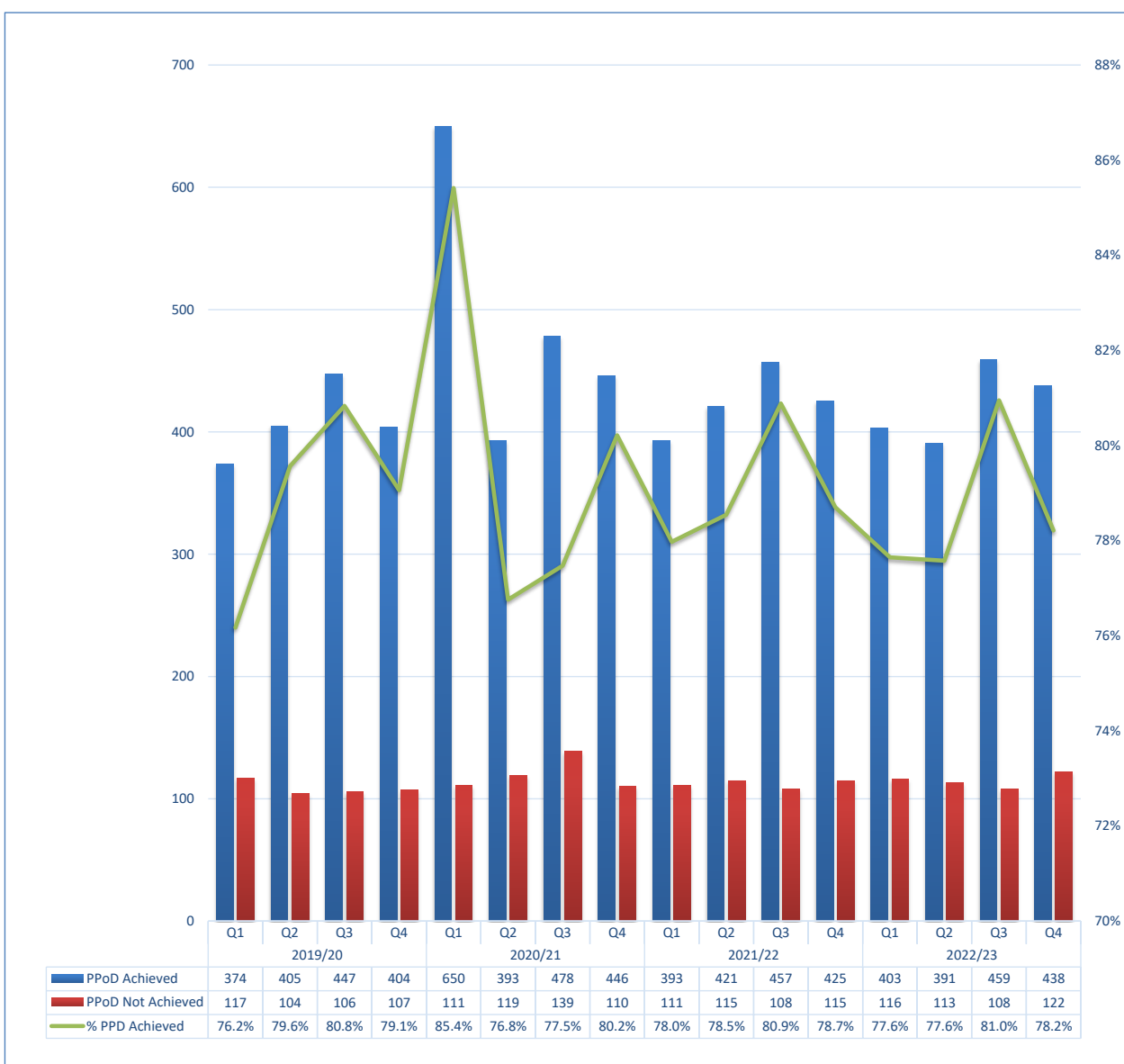
Part 2 - Leeds Health & Care Partnership EoL Data 2022/23 Report (Q1-Q4)

C2.5 Preferred Place of Death Achieved (First Choice) by patients

	Qtr	PPoD Achieved	PPoD Not Achieved	% PPD Achieved
Leeds Health & Care Partnership	Q1	403	116	78%
	Q2	391	113	78%
	Q3	459	108	81%
	Q4	438	122	78%
	Total	1691	459	79%

NOTE: Only patients with both PPoD and APoD recorded are included in this analysis

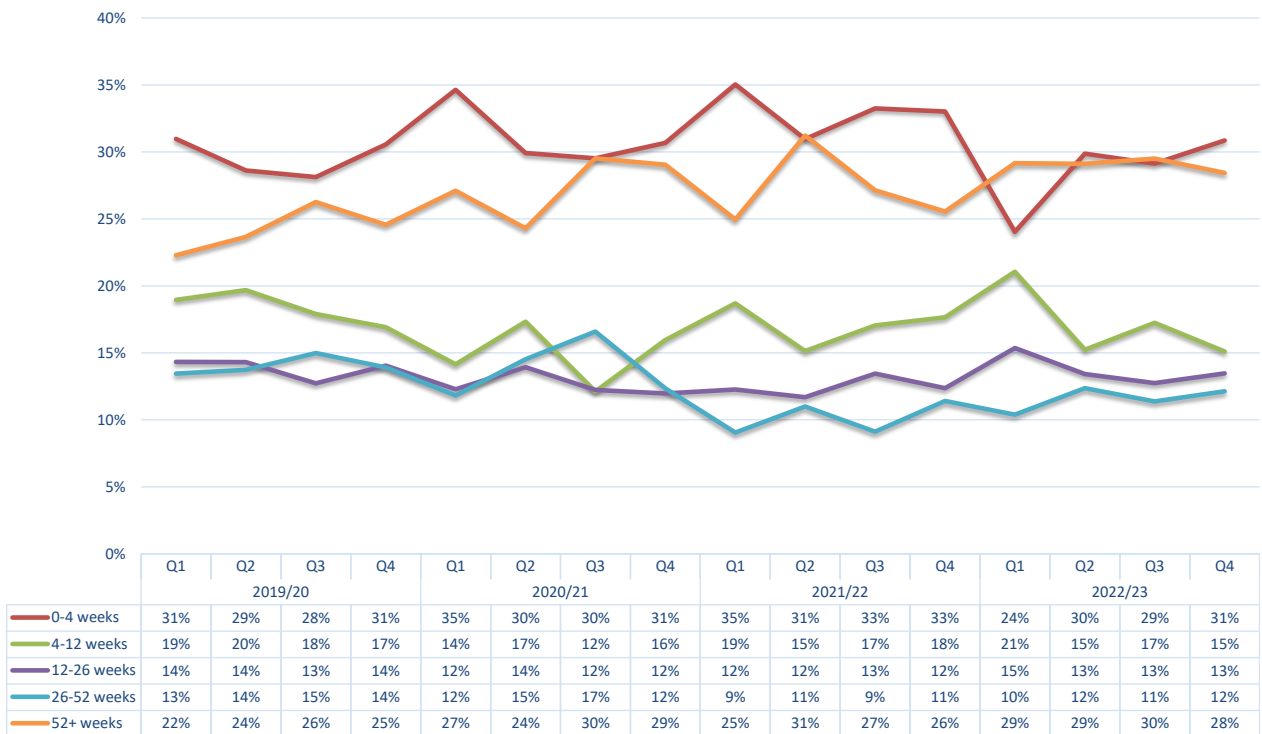
Preferred Place of Death (First Choice) Achieved by patients



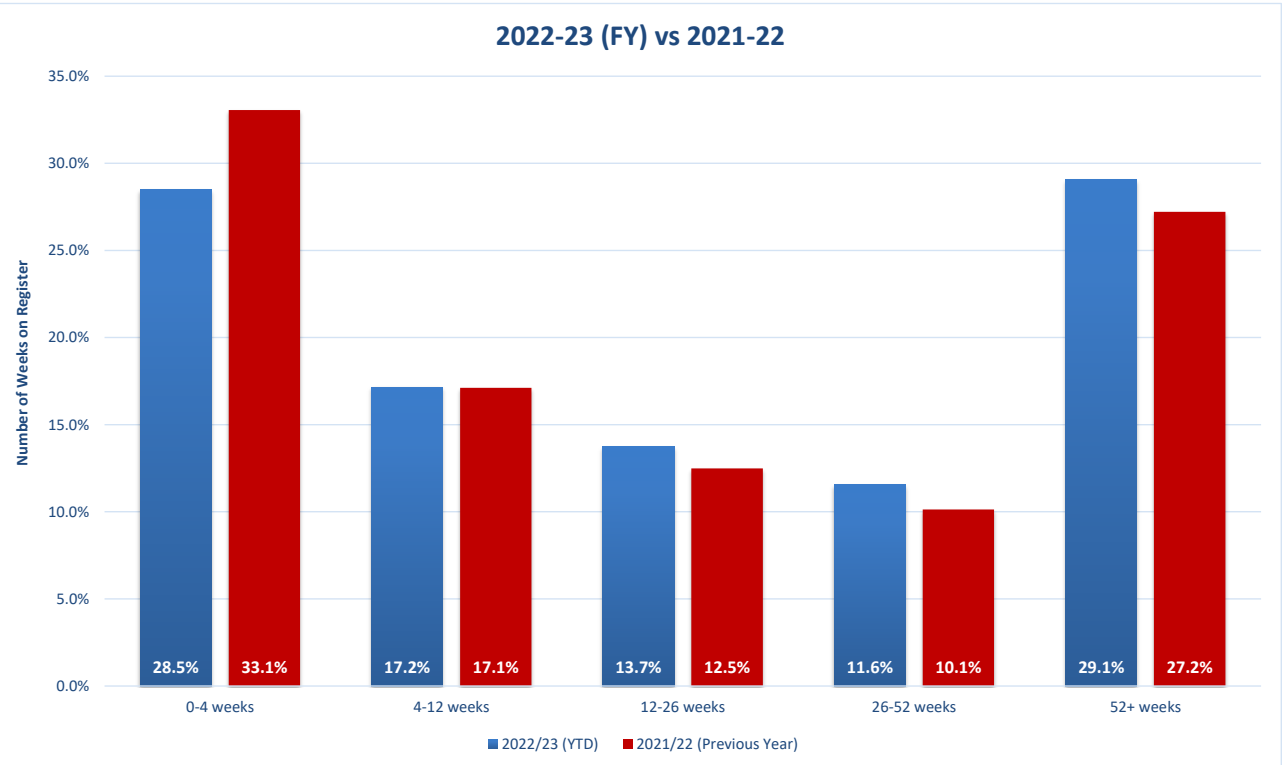
Part 2 - Leeds Health & Care Partnership EoL Data 2022/23 Report (Q1-Q4)

C2.6 Duration of time (in weeks) the patients were on EPaCCS (Leeds)

Duration of time (in weeks) the patients were on EPaCCS by Quarter (as %age of Total)



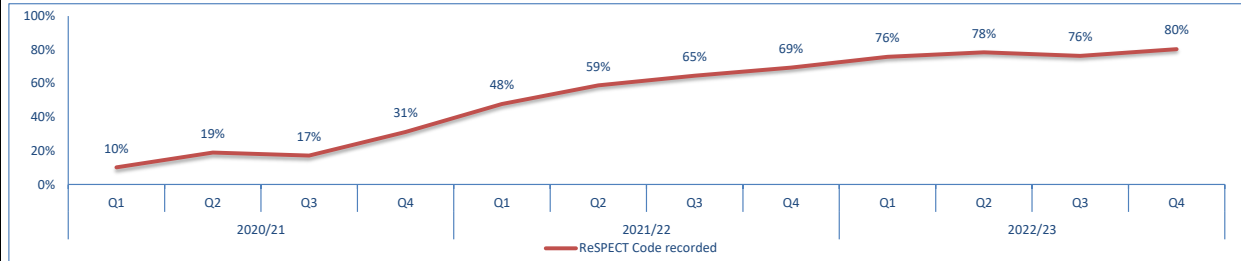
Duration of time (in weeks) the patients were on EPaCCS (as %age of Total)



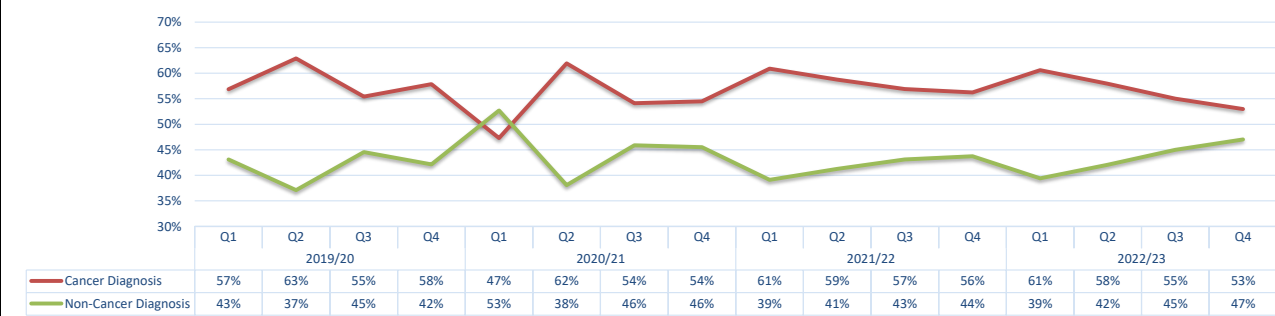
Part 2 - Leeds Health & Care Partnership EoL Data 2022/23 Report (Q1-Q4)

C2.7 Deceased EPaCCS patients who have ReSPECT (Recommended Summary Plan for Emergency Care and Treatment) Code recorded on the system.

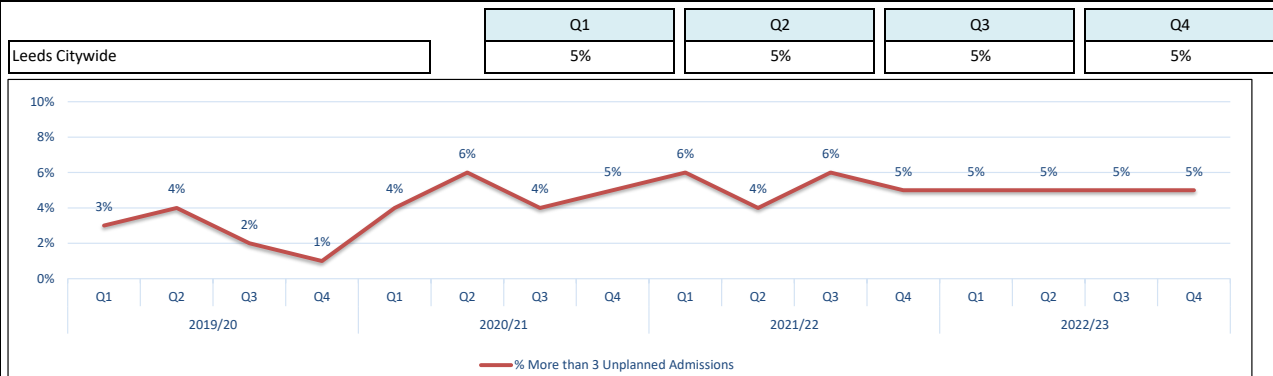
Patients with ReSPECT Code	Q1		Q2		Q3		Q4	
	ReSPECT Code recorded	533	76%	520	78%	611	76%	596
ReSPECT Code not recorded	170	24%	143	22%	189	24%	146	20%
Total	703		663		800		742	



C2.8 Patients with a Cancer Diagnosis recorded at any point in life.



C2.9 Percentage of deceased EPaCCS patients with 3 or more Unplanned Admissions (Non-Elective Inpatient) in the last 90 days of their life.



PCN
Armley PCN
Beeston PCN
Bramley, Wortley and Middleton PCN
Burmantofts, Harehills and Richmond Hill PCN
Central North Leeds PCN
Chapelton PCN
Crossgates PCN
Holt Park PCN
LS25 / LS26 PCN
LSMP & The Light
Middleton and Hunslet PCN
Morley and District PCN
Otley PCN
Seacroft PCN
West Leeds PCN
Wetherby PCN
Woodsley PCN
Yeadon PCN
York Road PCN

	Q1	Q2	Q3	Q4
4%				
13%				
11%				
3%				
0%				
11%				
7%				
0%				
8%				
7%				
0%				
0%				
5%				
2%				
9%				
17%				
18%				
13%				
2%				
5%				
3%				
5%				
0%				
0%				
2%				
2%				
11%				
2%				
0%				
4%				
7%				
0%				
0%				
4%				
3%				
8%				
7%				
6%				
4%				
8%				
4%				
2%				
3%				
9%				
7%				
11%				
6%				
0%				
4%				
4%				
3%				
10%				
3%				
6%				
9%				
3%				
8%				
6%				

**Part 2 - Leeds Clinical Commissioning Group (CCG) EPaCCS Data
2022/23 Report (Q1-Q4)**

C2.10 Unplanned hospital usage (A&E and Non-Elective Admissions) by EPaCCS Patients in the last 90 days of their life.

Please note that the data below only relates to patients who have died in a particular quarter and looking back 90 days from their respective date of death.

The actual hospital visits/admissions could have taken place in a previous quarter i.e. a patient who died on 01 April 2022 may have accessed the hospital between Jan to Mar 2022

Activity and Cost Breakdown

	Q1		Q2		Q3		Q4		Total	
A&E visits	Activity	Cost	Activity	Cost	Activity	Cost	Activity	Cost	Activity	Cost
Unique Patients	370		353		399		399		1521	
Total Activity and Cost	543	£127,226	557	£136,533	584	£146,301	567	£143,062	2251	£553,122
Average Activity and Cost	1.5	£344	1.6	£387	1.5	£367	1.4	£359	1.5	£364
Planned Admissions (EL)	Activity	Cost	Activity	Cost	Activity	Cost	Activity	Cost	Activity	Cost
Unique Patients	25		27		17		17		86	
Total Activity and Cost	30	£95,428	29	£139,845	19	£77,713	17	£66,051	95	£379,037
Average Activity and Cost	1.2	£3,817.12	1.1	£5,179.44	1.1	£4,571.35	1.0	£3,885.35	1.1	£4,407
Unplanned Admissions (NEL)	Activity	Cost	Activity	Cost	Activity	Cost	Activity	Cost	Activity	Cost
Unique Patients	400		391		397		423		1611	
Total Activity and Cost	579	£2,761,508	579	£2,731,280	564	£2,498,303	579	£2,740,633	2301	£10,731,724
Average Activity and Cost	1.4	£6,904	1.5	£6,985	1.4	£6,293	1.4	£6,479	1.4	£6,662

Average and Median Number of Hospital Inpatient bed days/person in last 90 days of life

	Q1		Q2		Q3		Q4	
Total Bed Days Elective	217		338		120		94	
Total Bed Days Non-Elective	5963		6378		6242		6938	
Total	6180		6716		6362		7032	
	Average	Median	Average	Median	Average	Median	Average	Median
Elective Admissions	8.7	5.0	12.5	2.0	7.1	4.0	5.5	2.0
Non-Elective Admissions	14.9	11.0	16.3	12.0	15.7	12.0	16.4	12.0
All Inpatient Admissions	15.1	11.0	16.7	12.0	15.7	12.0	16.4	12.0

Length of Stay Breakdown for Unplanned Admissions (Non-Elective Inpatient)

	Q1	Q2	Q3	Q4	Total
Length of Stay (Unplanned Admissions)	No. of Admissions	No. of Admissions	No. of Admissions	No. of Admissions	No. of Admissions
0 Days	35	35	28	29	127
1-5 Days	213	217	202	194	826
6-10 Days	135	124	119	121	499
11-15 Days	79	73	88	76	316
16-20 Days	43	41	48	48	180
21-47 Days	66	75	66	100	307
48+ Days	8	14	13	11	46
	579	579	564	579	2301

