

Leeds Planning Ahead Report (End of Life)

Leeds Health & Care Partnership

2022/23 Report (Q3) - Leeds Citywide

Data Source : SystemOne and EMIS

Data Provided by : Leeds Community Healthcare, St Gemma's Hospice, Sue Ryder Wheatfields Hospice and Public Health Leeds (Integrated Digital Services)

Report Compiled by : Business Intelligence Team, Leeds Office of the ICB

	Page
Summary	3
Part 1 - GP Practice EoL Data	
C1.1a Patients who died and were included on EPaCCS in Leeds, breakdown by PCN (Part 1 of 2)	4
C1.1b Patients who died and were included on EPaCCS in Leeds, breakdown by PCN (Part 2 of 2)	5
C1.2a Percentage of Patients on EPaCCS who have achieved Preferred Place of Death in Leeds, breakdown by PCN (Part 1 of 2)	6
C1.2b Percentage of Patients on EPaCCS who have achieved Preferred Place of Death in Leeds, breakdown by PCN (Part 2 of 2)	7
Part 2 - Leeds City EoL Data	
C2.1 Total patient deaths in and out of hospital and total deaths by	8
C2.2 Patients who died and were included on EPaCCS	8
C2.3 Preferred place of death recorded	9
C2.4 Actual place of death recorded	9
C2.5 Preferred Place of Death Achieved (First Choice) by patients	10
C2.6 Duration of time (in weeks) the patients were on EPaCCS (Leeds)	11
C2.7 Deceased EPaCCS patients who have ReSPECT (Recommended Summary Plan for Emergency Care and Treatment) Code recorded on the system.	12
C2.8 Percentage of deceased EPaCCS patients with 3 or more Unplanned Admissions (Non-Elective Inpatient) in the last 90 days of their life.	12

Leeds Planning Ahead Report (End of Life)

The Electronic Palliative Care Coordination System (EPaCCS) is an electronic record that supports advance care planning conversations and improves the coordination of care for people approaching the end of life.

It provides a summary of key recommendations, preferences and information essential to the high quality care for patients with palliative care needs and those choosing to plan ahead, irrespective of prognosis. Local and national data shows that when patients are given the opportunity to discuss and share their preferences they are more likely to achieve their end of life care goals.

This is a 2022-23 (Q3) Leeds Planning Ahead Report report, combining SystmOne and EMIS data for patients registered from all the practices across Leeds.

To ensure a comprehensive view of advance care planning it collates EPaCCS data entered by all relevant care providers: Leeds Community Healthcare community services, hospice services, community palliative care teams in addition to primary care.

These Leeds Planning Ahead Report (End of Life) reports have been produced to enable you to reflect on end of life care in your practice.

Key findings of the 2022/23 Report (Q3) report are:

- ◆ **45% (in Q3)** of adults who died in Leeds had an EPaCCS record which is at par with previous year.
(EPaCCS Deaths / All Deaths) 2022/23: Q1 (703/1537), Q2 (663/1492) , Q3 (800/1780)
(EPaCCS Deaths / All Deaths) 2021/22: Q1 (685/1431) , Q2 (726/1654) , Q3 (833/1842) and Q4 (736/1566)
- ◆ **81%** achieved their preferred place of death in current reporting period compared to 79% for the previous year; with 71% dying outside of hospital compared to 70% in the previous year.
- ◆ The proportion of patients whose EPaCCS record was started more than 3 month before they died is at 54% in current reporting period compared to 50% the previous year.
- ◆ The proportion of patients without an actual place of death recorded has increased in current reporting period to 15% from 14% last year.
- ◆ Percentage of patients who died and had a RESPECT Code recorded on the system:
2022/23: Q1 (76%), Q2 (78%), Q3 (76%)
2021/22: Q1 (48%), Q2 (59%), Q3 (65%) and Q4 (69%)
- ◆ Deaths at home recorded in the current reporting period :
2022/23: Q1 249 deaths (35%), Q2 227 deaths (34%), Q3 238 deaths (30%)
2021/22: Q1 263 deaths (38%), Q2 261 deaths (36%), Q3 282 deaths (34%) and Q4 267 deaths (36%)

This report covers a period of continued high demand across the health and social care environment on the system. It is a considerable achievement the proportion of patients being supported in their preferred place has been maintained along with the overall proportion of people with an EPaCCS record. This marks a sustained improvement on 2016-2017 when 33% of adults who died had an EPaCCS record.

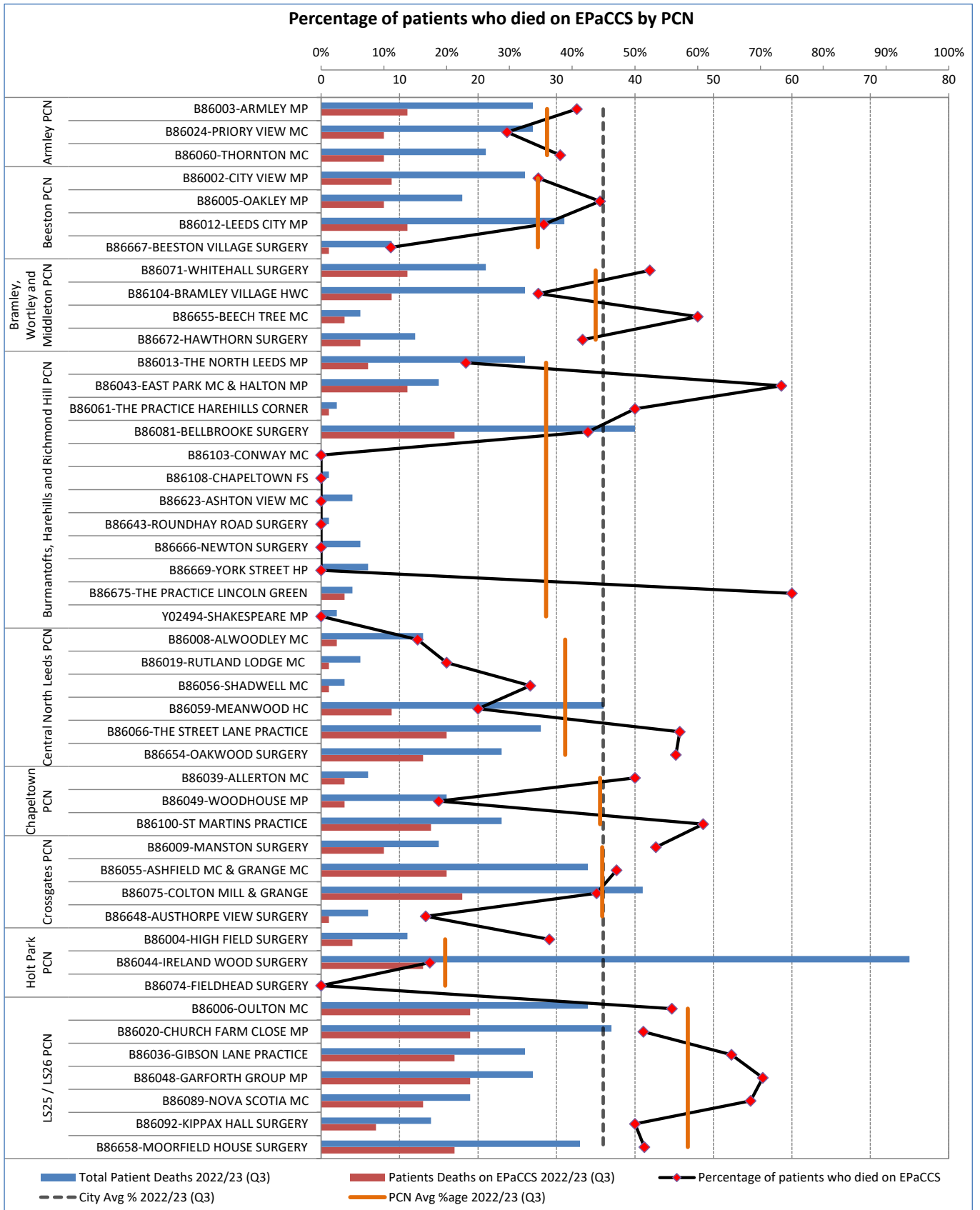
The findings show that that a greater proportion of people are being given opportunities to discuss , document and share their care preferences at an earlier stage and demonstrate improved data quality.

Part 1 - GP Practice EPaCCS Data
2022/23 Report (Q3)

Leeds Health & Care Partnership

C1.1a Patients who died and were included on EPaCCS in Leeds, breakdown by PCN (Part 1 of 2)

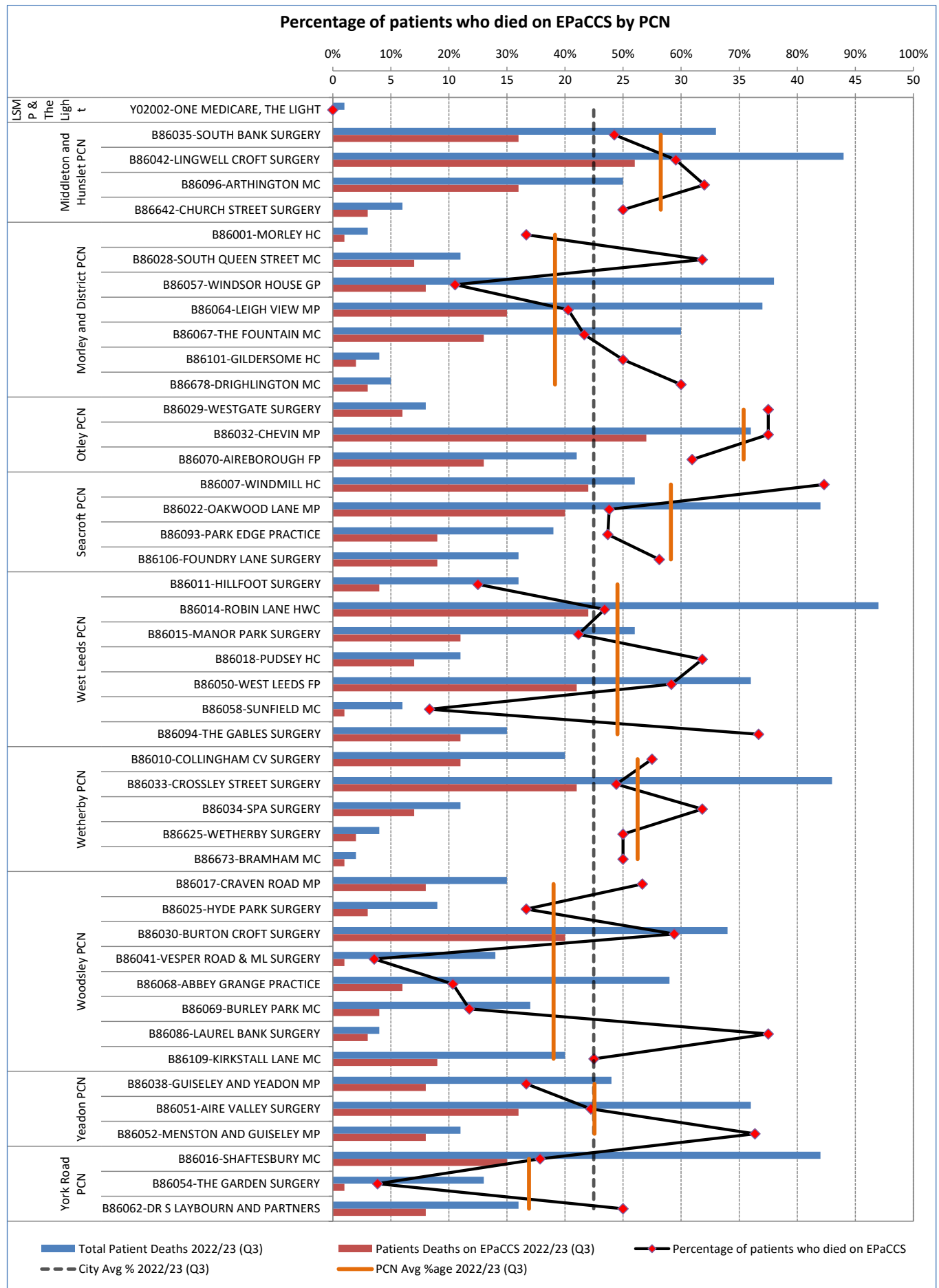
	Q1	Q2	Q3	Q4	Total
a. Number of All patient deaths	1537	1492	1780		4809
b. Number of patients deaths on EPaCCS	703	663	800		2166
c. % of patient deaths on EPaCCS	46%	44%	45%		45%



Part 1 - GP Practice EPaCCS Data
2022/23 Report (Q3)

Leeds Health & Care Partnership

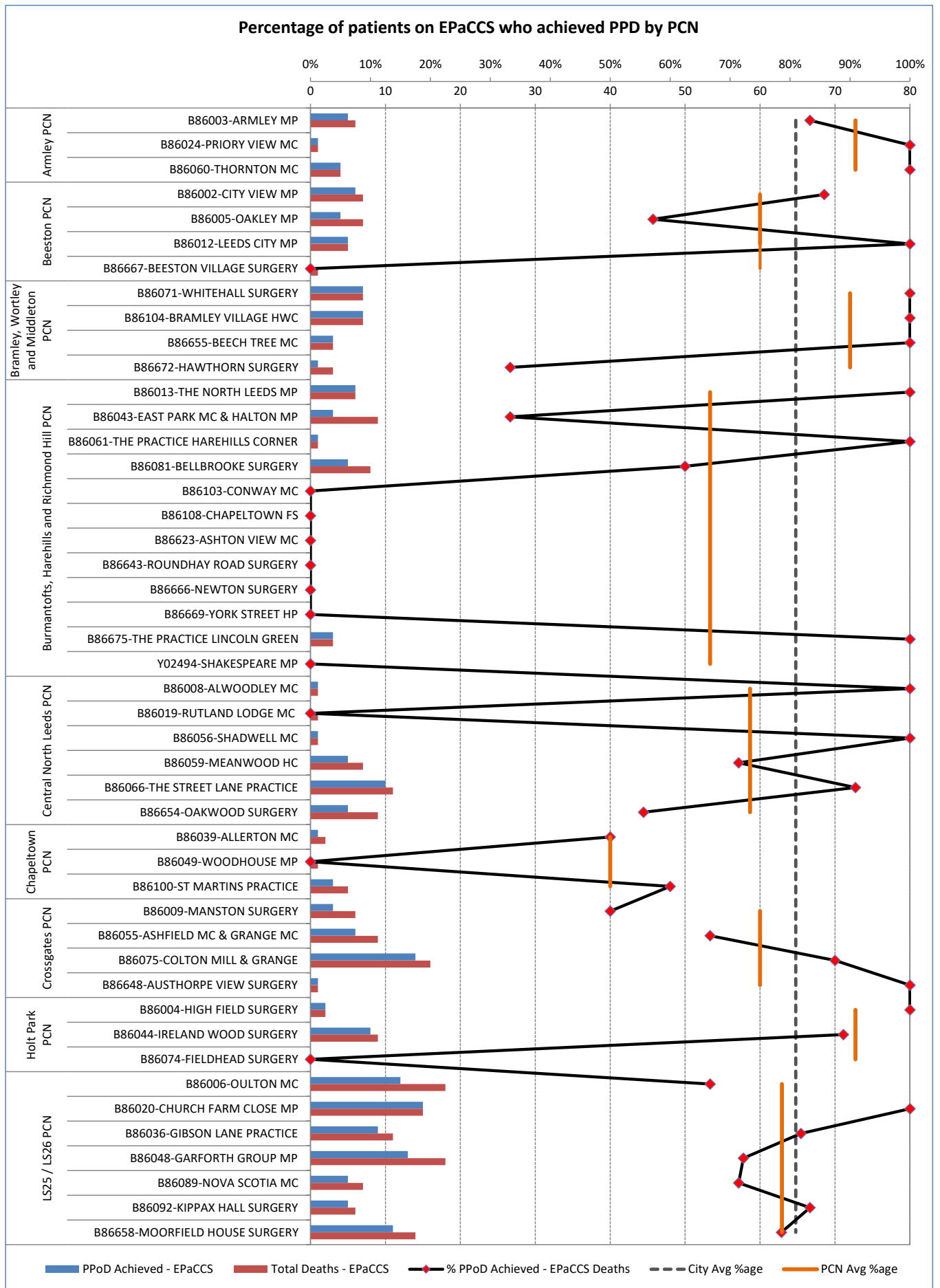
C1.1b Patients who died and were included on EPaCCS in Leeds, breakdown by PCN (Part 2 of 2)



Part 1 - GP Practice EPaCCS Data
2022/23 Report (Q3)

Leeds Health & Care Partnership

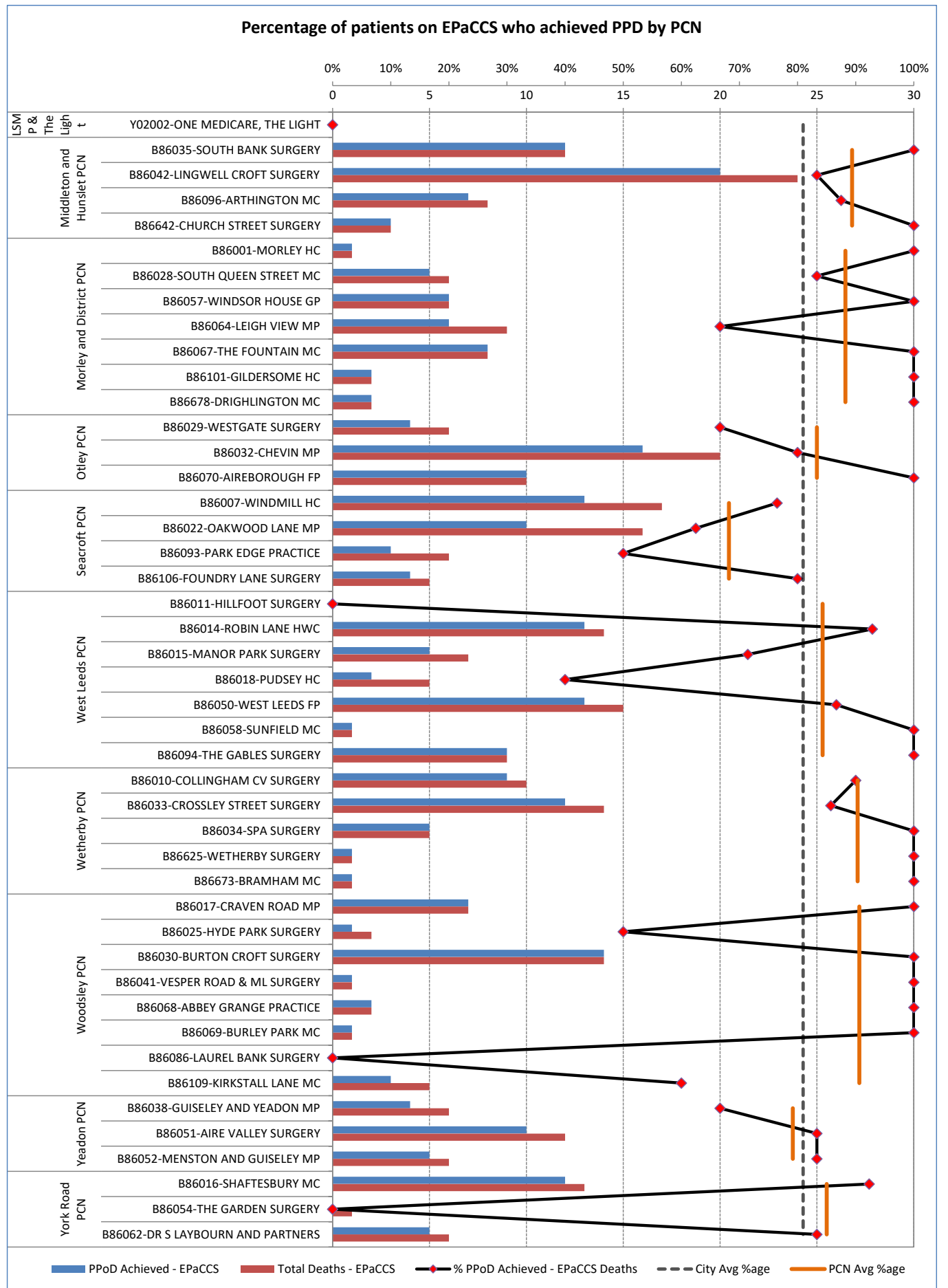
C1.2a Percentage of Patients on EPaCCS who have achieved Preferred Place of Death in Leeds, breakdown by PCN (Part 1 of 2)



Part 1 - GP Practice EPaCCS Data
2022/23 Report (Q3)

Leeds Health & Care Partnership

C1.2b Percentage of Patients on EPaCCS who have achieved Preferred Place of Death in Leeds, breakdown by PCN (Part 2 of 2)



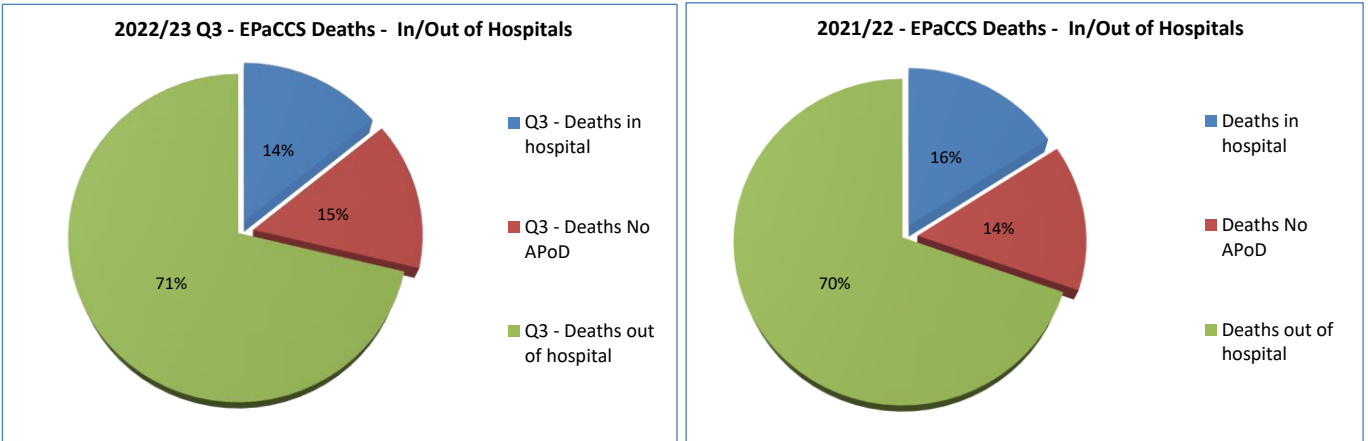
Part 2 - Leeds Health & Care Partnership EoL Data 2022/23 Report (Q3)

C2.1 Total patient deaths in and out of hospital and total deaths by

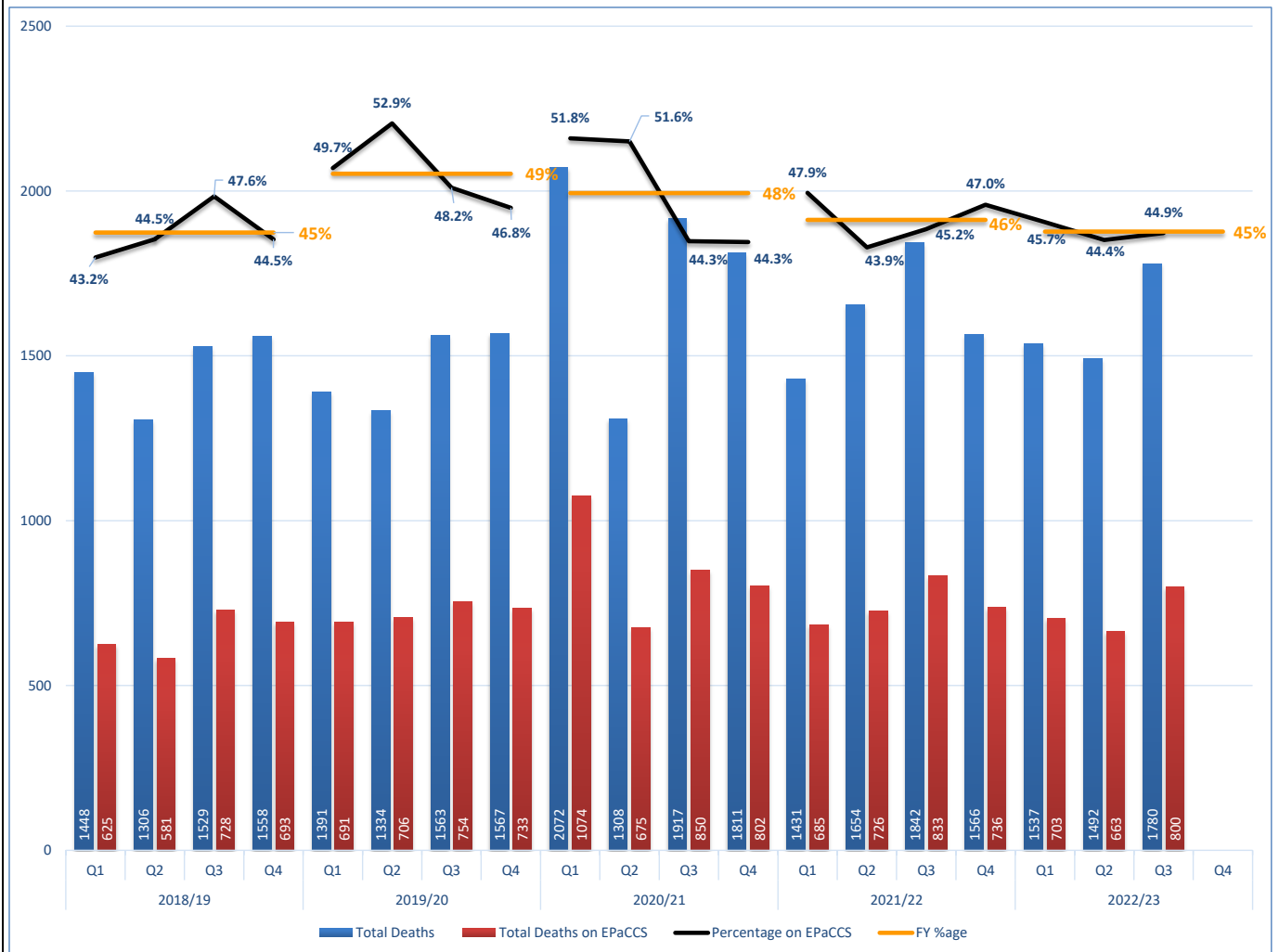
	Q1		Q2		Q3		Q4		Total	
1. Total deaths in hospital?	114	16%	135	20%	113	14%			362	17%
2. Total deaths out of hospital?	501	71%	466	70%	570	71%			1537	71%
3. Total number of deaths with No APoD	88	13%	62	9%	117	15%			267	12%

	All	EPaCCS	All	EPaCCS	All	EPaCCS	All	EPaCCS	All	EPaCCS
4. Total number of deaths in Leeds	1537	703	1492	663	1780	800			4809	2166

Percentage deaths in hospital / out of hospital for 2022/23 Report (Q3) compared with previous year.



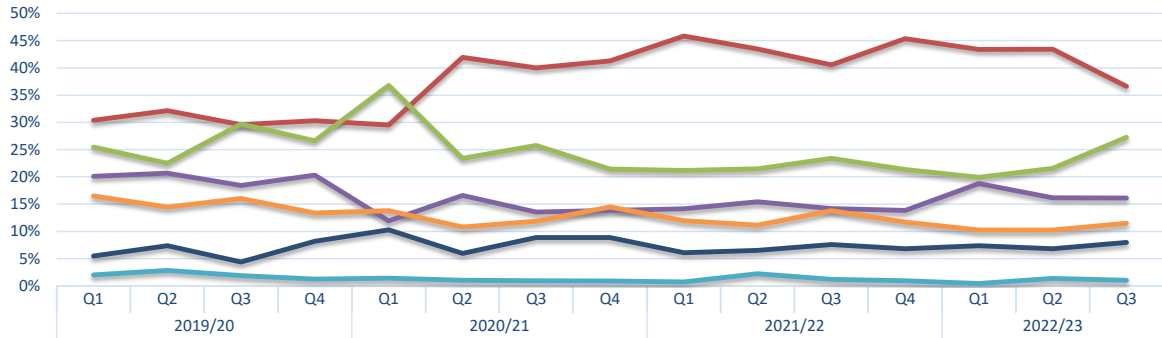
C2.2 Patients who died and were included on EPaCCS



Part 2 - Leeds Health & Care Partnership EoL Data 2022/23 Report (Q3)

C2.3 Preferred place of death recorded

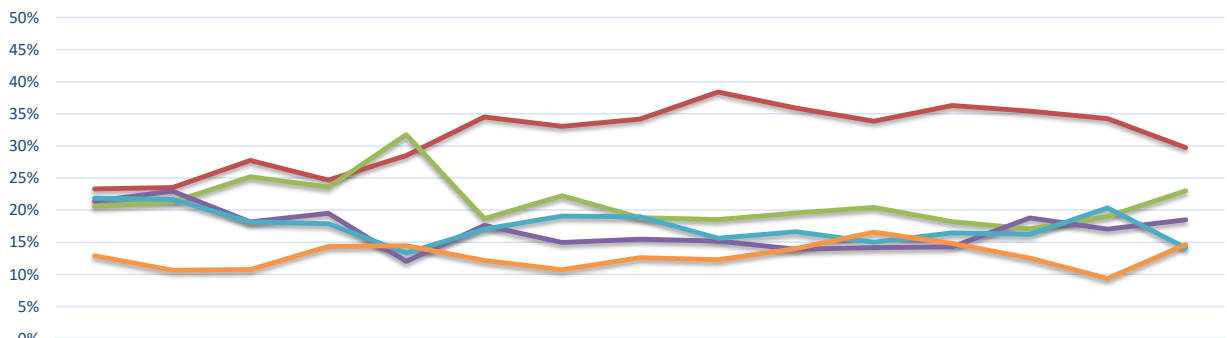
		Leeds Health & Care Partnership			
	Preferred Place of Death	Q1	Q2	Q3	Q4
1	Care Home	140	143	218	
2	Home	305	288	293	
3	Hospice	132	107	129	
4	Hospital	3	9	8	
5	No PPOD (preferred place of death)	72	68	92	
6	Undecided/Declined	51	48	60	
	Total	703	663	800	



	Q1	Q2	Q3	Q4	Q1	Q2	Q3	Q4	Q1	Q2	Q3	Q4	Q1	Q2	Q3	
	2019/20				2020/21				2021/22				2022/23			
Home	30%	32%	30%	30%	30%	42%	40%	41%	46%	43%	41%	45%	43%	43%	37%	
Care Home	25%	23%	30%	27%	37%	23%	26%	21%	21%	21%	23%	21%	20%	22%	27%	
Hospice	20%	21%	18%	20%	12%	17%	14%	14%	14%	15%	14%	14%	19%	16%	16%	
Hospital	2%	3%	2%	1%	1%	1%	1%	1%	1%	2%	1%	1%	0%	1%	1%	
No PPOD	16%	14%	16%	13%	14%	11%	12%	14%	12%	11%	14%	12%	10%	10%	12%	
Undecided/Declined	5%	7%	4%	8%	10%	6%	9%	9%	6%	7%	8%	7%	7%	7%	8%	

C2.4 Actual place of death recorded

		Leeds Health & Care Partnership			
	Actual Place of Death	Q1	Q2	Q3	Q4
1	Care Home	120	126	184	
2	Home	249	227	238	
3	Hospice	132	113	148	
4	Hospital	114	135	113	
5	No APoD (actual place of death)	88	62	117	
6	Other	0	0	0	
	Total	703	663	800	



	Q1	Q2	Q3	Q4	Q1	Q2	Q3	Q4	Q1	Q2	Q3	Q4	Q1	Q2	Q3	
	2019/20				2020/21				2021/22				2022/23			
Home	23%	24%	28%	25%	28%	35%	33%	34%	38%	36%	34%	36%	35%	34%	30%	
Care Home	21%	21%	25%	24%	32%	19%	22%	19%	19%	20%	20%	18%	17%	19%	23%	
Hospice	21%	23%	18%	20%	12%	18%	15%	15%	15%	14%	14%	14%	19%	17%	19%	
Hospital	22%	22%	18%	18%	13%	17%	19%	19%	16%	17%	15%	16%	16%	20%	14%	
No APoD	13%	11%	11%	14%	14%	12%	11%	13%	12%	14%	17%	15%	13%	9%	15%	

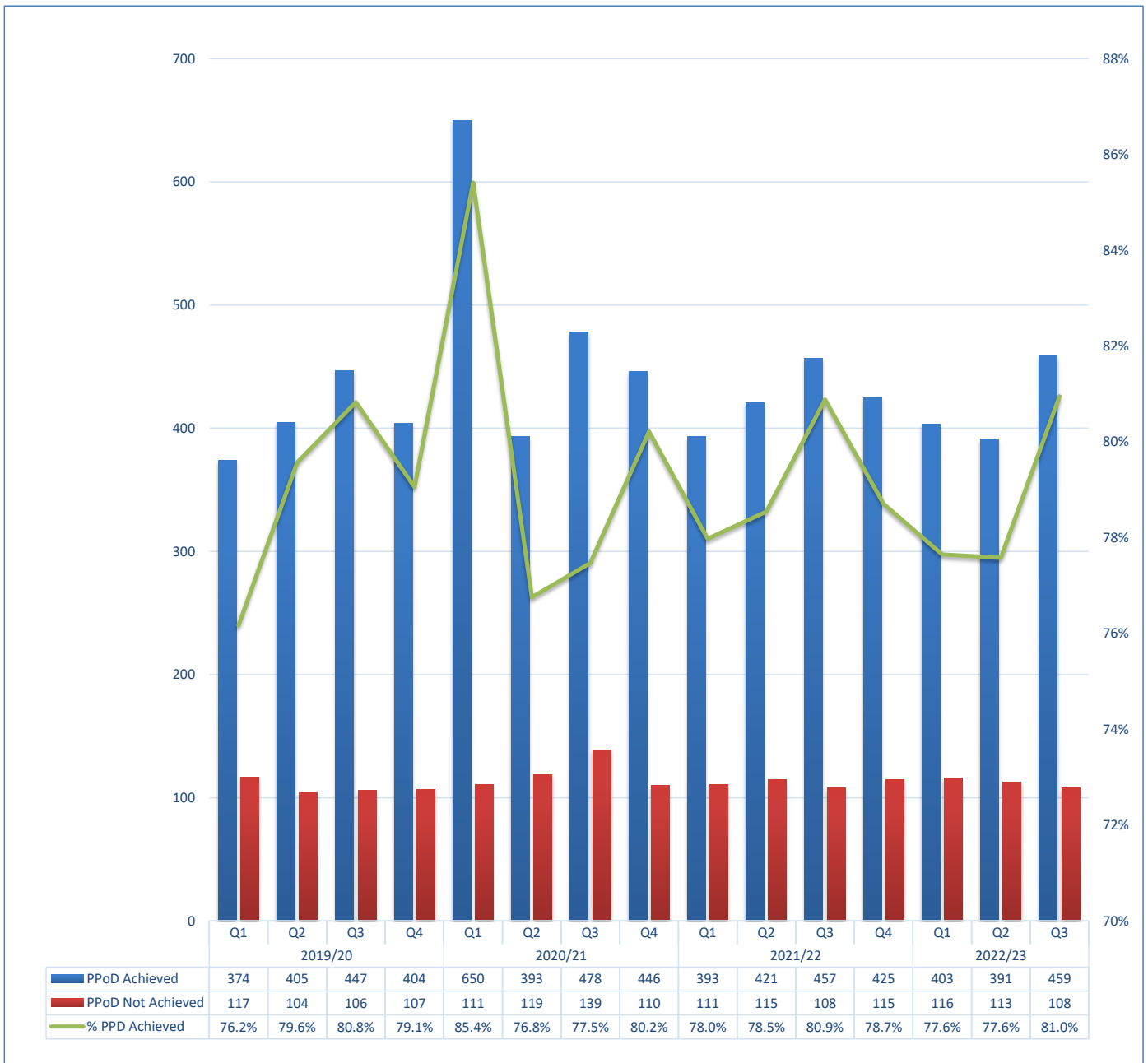
Part 2 - Leeds Health & Care Partnership EoL Data 2022/23 Report (Q3)

C2.5 Preferred Place of Death Achieved (First Choice) by patients

	Qtr	PPoD Achieved	PPoD Not Achieved	% PPD Achieved
Leeds Health & Care Partnership	Q1	403	116	78%
	Q2	391	113	78%
	Q3	459	108	81%
	Q4			
	Total	1253	337	79%

NOTE: Only patients with both PPoD and APoD recorded are included in this analysis

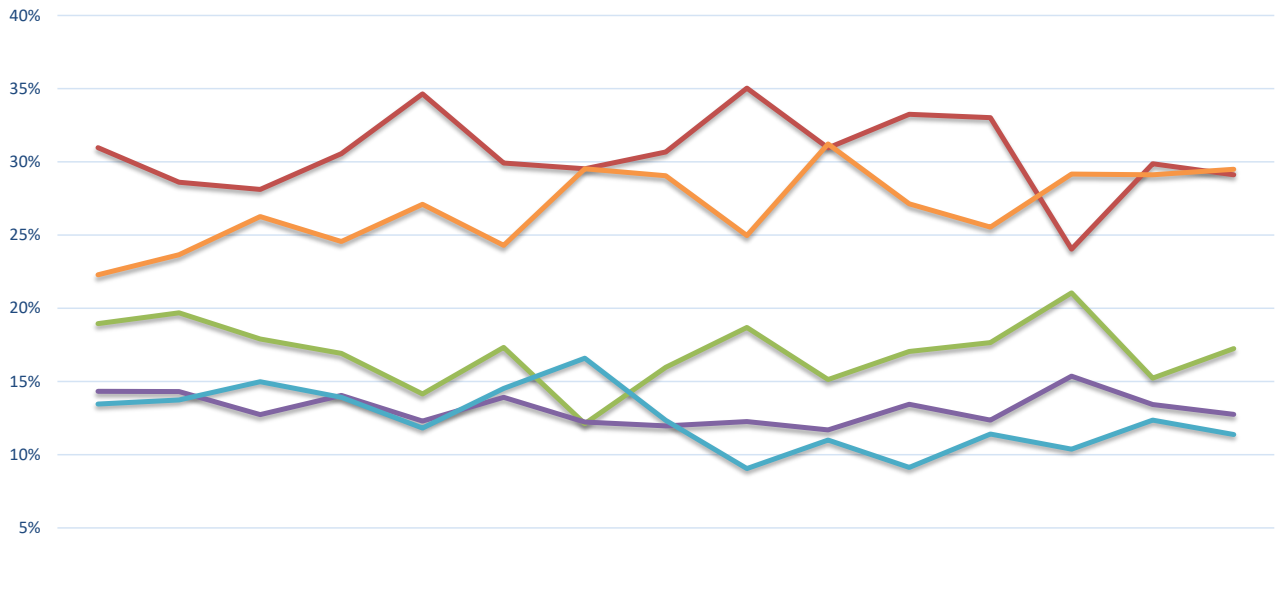
Preferred Place of Death (First Choice) Achieved by patients



Part 2 - Leeds Health & Care Partnership EoL Data 2022/23 Report (Q3)

C2.6 Duration of time (in weeks) the patients were on EPaCCS (Leeds)

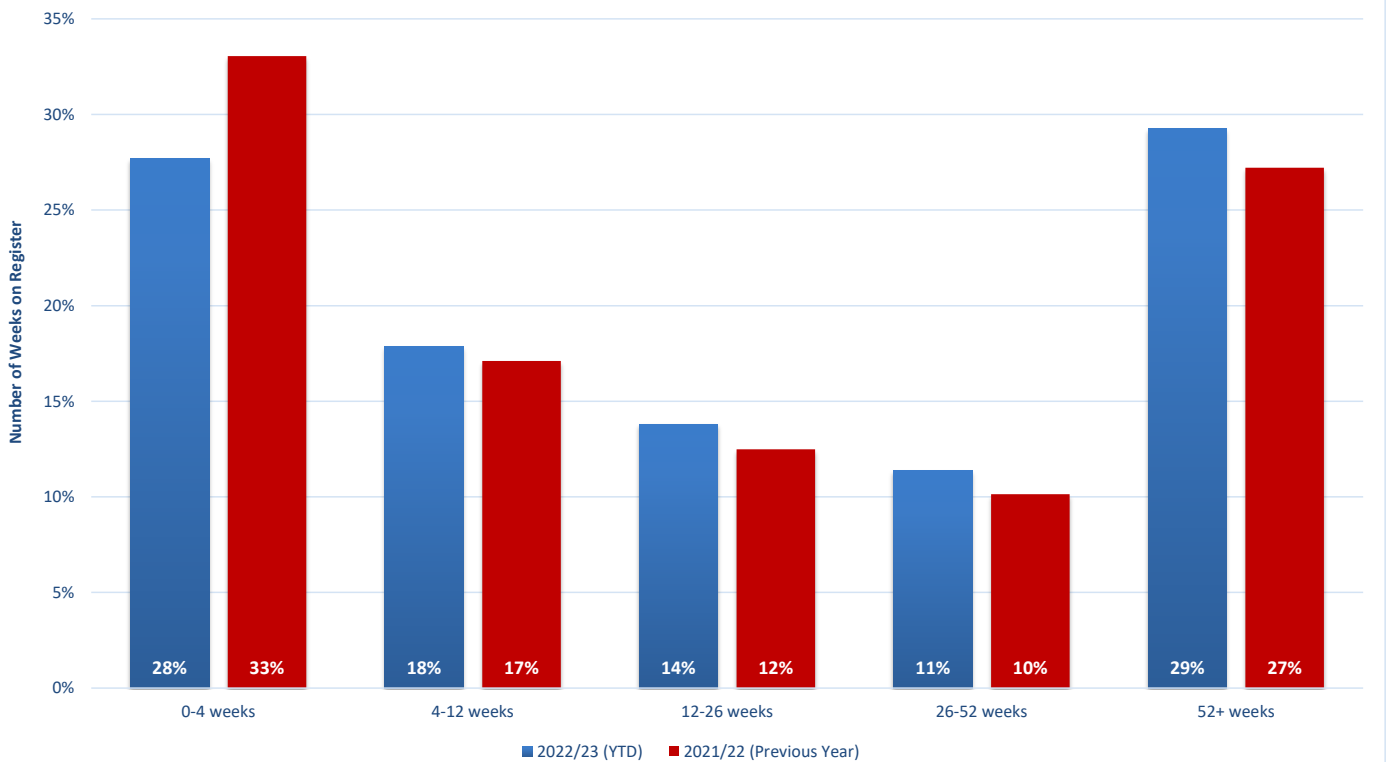
Duration of time (in weeks) the patients were on EPaCCS by Quarter (as %age of Total)



	Q1	Q2	Q3	Q4	Q1	Q2	Q3	Q4	Q1	Q2	Q3	Q4	Q1	Q2	Q3
	2019/20				2020/21				2021/22				2022/23		
0-4 weeks	31%	29%	28%	31%	35%	30%	30%	31%	35%	31%	33%	33%	24%	30%	29%
4-12 weeks	19%	20%	18%	17%	14%	17%	12%	16%	19%	15%	17%	18%	21%	15%	17%
12-26 weeks	14%	14%	13%	14%	12%	14%	12%	12%	12%	12%	13%	12%	15%	13%	13%
26-52 weeks	13%	14%	15%	14%	12%	15%	17%	12%	9%	11%	9%	11%	10%	12%	11%
52+ weeks	22%	24%	26%	25%	27%	24%	30%	29%	25%	31%	27%	26%	29%	29%	30%

Duration of time (in weeks) the patients were on EPaCCS (as %age of Total)

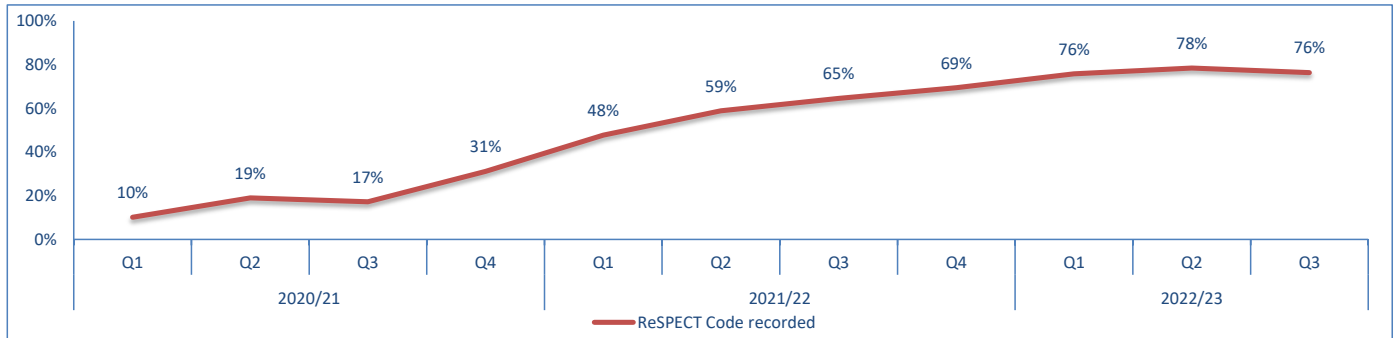
2022-23 (YTD) vs 2021-22



Part 2 - Leeds Health & Care Partnership EoL Data 2022/23 Report (Q3)

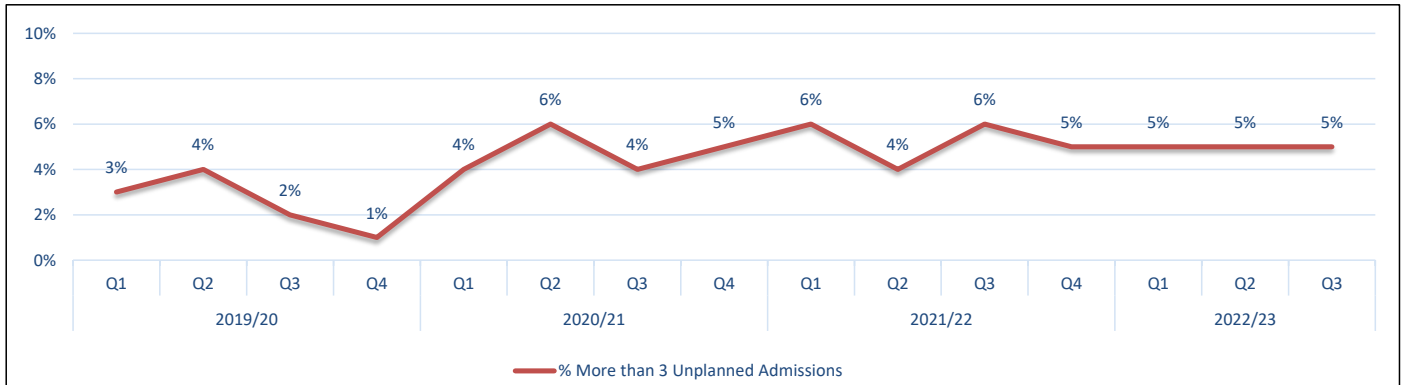
C2.7 Deceased EPaCCS patients who have ReSPECT (Recommended Summary Plan for Emergency Care and Treatment) Code recorded on the system.

Patients with ReSPECT Code	Q1		Q2		Q3		Q4	
	ReSPECT Code recorded	533	76%	520	78%	611	76%	
ReSPECT Code not recorded	170	24%	143	22%	189	24%		
Total	703		663		800			



C2.8 Percentage of deceased EPaCCS patients with 3 or more Unplanned Admissions (Non-Elective Inpatient) in the last 90 days of their life.

	Q1	Q2	Q3	Q4
Leeds Citywide	5%	5%	5%	



PCN	Q1	Q2	Q3	Q4
Armley PCN	4%	13%	11%	
Beeston PCN	0%	11%	3%	
Bramley, Wortley and Middleton PCN	26%	0%	7%	
Burmantofts, Harehills and Richmond Hill PCN	16%	0%	8%	
Central North Leeds PCN	5%	3%	7%	
Chapelton PCN	0%	0%	0%	
Crossgates PCN	0%	8%	5%	
Holt Park PCN	9%	17%	18%	
LS25 / LS26 PCN	2%	5%	3%	
LSMP & The Light	0%	0%	0%	
Middleton and Hunslet PCN	0%	6%	2%	
Morley and District PCN	11%	2%	4%	
Otley PCN	0%	0%	4%	
Seacroft PCN	3%	8%	7%	
West Leeds PCN	4%	8%	4%	
Wetherby PCN	3%	9%	7%	
Woodsley PCN	6%	0%	4%	
Yeadon PCN	3%	10%	3%	
York Road PCN	9%	3%	8%	