



EPaCCS Outcome Report

NHS Leeds CCG

2021/22 Report (Q1) - CCG Level

Data Source : SystmOne and EMIS

Data Provided by : Health Care Hub (Leeds), Leeds Community Healthcare, St Gemma's Hospice, Sue Ryder
 Wheatfields Hospice and Data Quality Team (NHS Leeds CCG)

Report Compiled by : Business Intelligence Team, NHS Leeds CCG

	Page
Summary	3
Part 1 - GP Practice EPaCCS Data	
C1.1a Patients who died and were included on EPaCCS - NHS Leeds CCG (Part 1 of 2)	4
C1.1b Patients who died and were included on EPaCCS - NHS Leeds CCG (Part 2 of 2)	5
C1.2a Percentage of Patients on EPaCCS who have achieved Preferred Place of Death - NHS Leeds CCG (Part 1 of 2)	6
C1.2b Percentage of Patients on EPaCCS who have achieved Preferred Place of Death - NHS Leeds CCG (Part 2 of 2)	7
Part 2 - Leeds CCGs EPaCCS Data	
C2.1 Total patient deaths in and out of hospital and total deaths by CCG	8
C2.2 Patients with a Cancer Diagnosis recorded at any point in life (2021/22 Report (Q1) compared with previous year)	8
C2.3 Patients who died and were included on EPaCCS	8
C2.4 Preferred place of death recorded by CCG	9
C2.5 Actual place of death recorded by CCG	9
C2.6 Preferred Place of Death Achieved (First Choice) by Leeds CCG EPaCCS patients	10
C2.7 Duration of time (in weeks) the patients were on EPaCCS (Leeds City wide)	11
C2.8a Unplanned hospital usage (A&E and Non-Elective Admissions) by EPaCCS Patients in the last 90 days of their life.	12
C2.8b Reasons for Unplanned hospital usage (Non-Elective Admissions) by EPaCCS Patients in the last 90 days of their life.	13
C2.9 EPaCCS patients who have a ReSPECT (Recommended Summary Plan for Emergency Care and Treatment) Code recorded on the system.	14
C2.10 Ethnicity Breakdown of EPaCCS patients	14

EPaCCS Outcome Report

The Electronic Palliative Care Coordination System (EPaCCS) is an electronic record that supports advance care planning conversations and improves the coordination of care for people approaching the end of life.

It provides a summary of key recommendations, preferences and information essential to the high quality care for patients with palliative care needs and those choosing to plan ahead, irrespective of prognosis. Local and national data shows that when patients are given the opportunity to discuss and share their preferences they are more likely to achieve their end of life care goals.

This is a 2021-22 (Q1) Leeds EPaCCS report, combining SystemOne and EMIS data for patients registered from all the practices across Leeds.

To ensure a comprehensive view of advance care planning it collates EPaCCS data entered by all relevant care providers: Leeds Community Healthcare community services, hospice services, community palliative care teams in addition to primary care.

These EPaCCS reports have been produced to enable you to reflect on end of life care in your practice.

Key findings of the 2021/22 Report (Q1) report are:

- ◆ **48% (in Q1)** of adults who died in Leeds had an EPaCCS record which is at par with previous year.
(EPaCCS Deaths / All Deaths) **2021/22:** Q1 (679/1415)
(EPaCCS Deaths / All Deaths) 2020/21: Q1 (1074/2072), Q2 (675/1308), Q3 (850/1917) and Q4 (802/1811)
- ◆ **79%** achieved their preferred place of death in current reporting period compared to 80% for the previous year; with 71% dying outside of hospital (same for previous year).
- ◆ The proportion of patients whose EPaCCS record was started more than 3 month before they died is at 47% in current reporting period compared to 54% the previous year.
- ◆ The proportion of patients without an actual place of death recorded has slightly increased to 14% from 13% last year.
- ◆ Percentage of patients who died and had a RESPECT Code recorded on the system:
2021/22: Q1 (48%)
2020/21: Q1 (10%), Q2 (19%), Q3 (17%) and Q4 (31%)
- ◆ Deaths at home has significantly increased in the current reporting period
2021/22: Q1 258 deaths (38%)
2020/21: Q1 306 deaths (28%), Q2 233 deaths (35%), Q3 281 deaths (33%) and Q4 274 (34%)

This report covers a period of unprecedented demand across the health and social care environment: particularly given the impact of **COVID-19** on the system. It is a considerable achievement the proportion of patients being supported in their preferred place has been maintained along with the overall proportion of people with an EPaCCS record. This marks a sustained improvement on 2016-2017 when 33% of adults who died had an EPaCCS record.

The findings show that that a greater proportion of people are being given opportunities to discuss, document and share their care preferences at an earlier stage and demonstrate improved data quality.

Part 1 - GP Practice EPaCCS Data 2021/22 Report (Q1)

NHS Leeds CCG

C1.1a Patients who died and were included on EPaCCS - NHS Leeds CCG (Part 1 of 2)

a. Number of All patient deaths?

Q1	Q2	Q3	Q4	Total
1415	0	0	0	1415

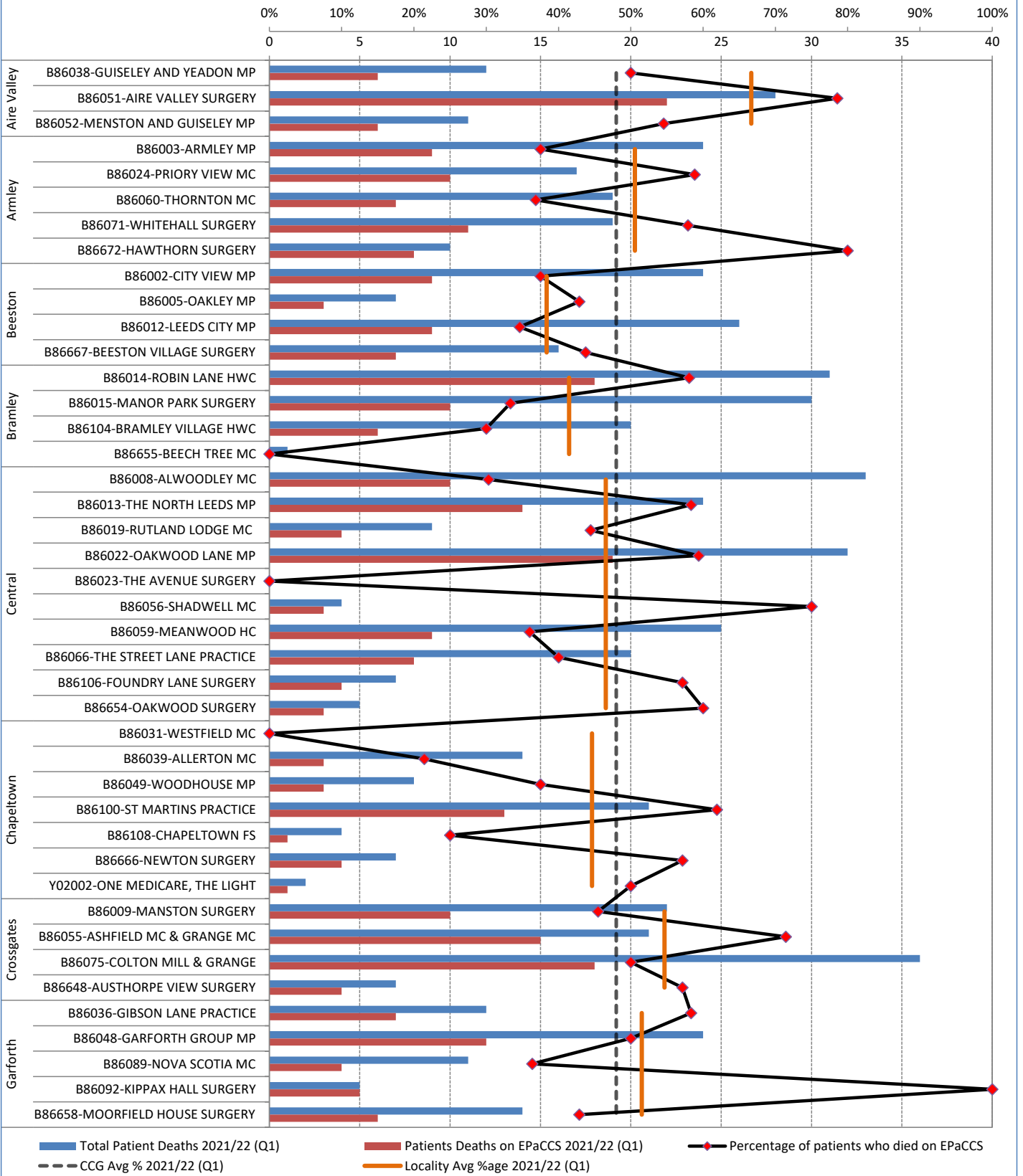
b. Number of patients deaths on EPaCCS?

679	0	0	0	679
-----	---	---	---	-----

c. % of patient deaths on EPaCCS?

48%	0%	0%	0%	48%
-----	----	----	----	-----

NHS Leeds CCG - Percentage of patients who died on EPaCCS

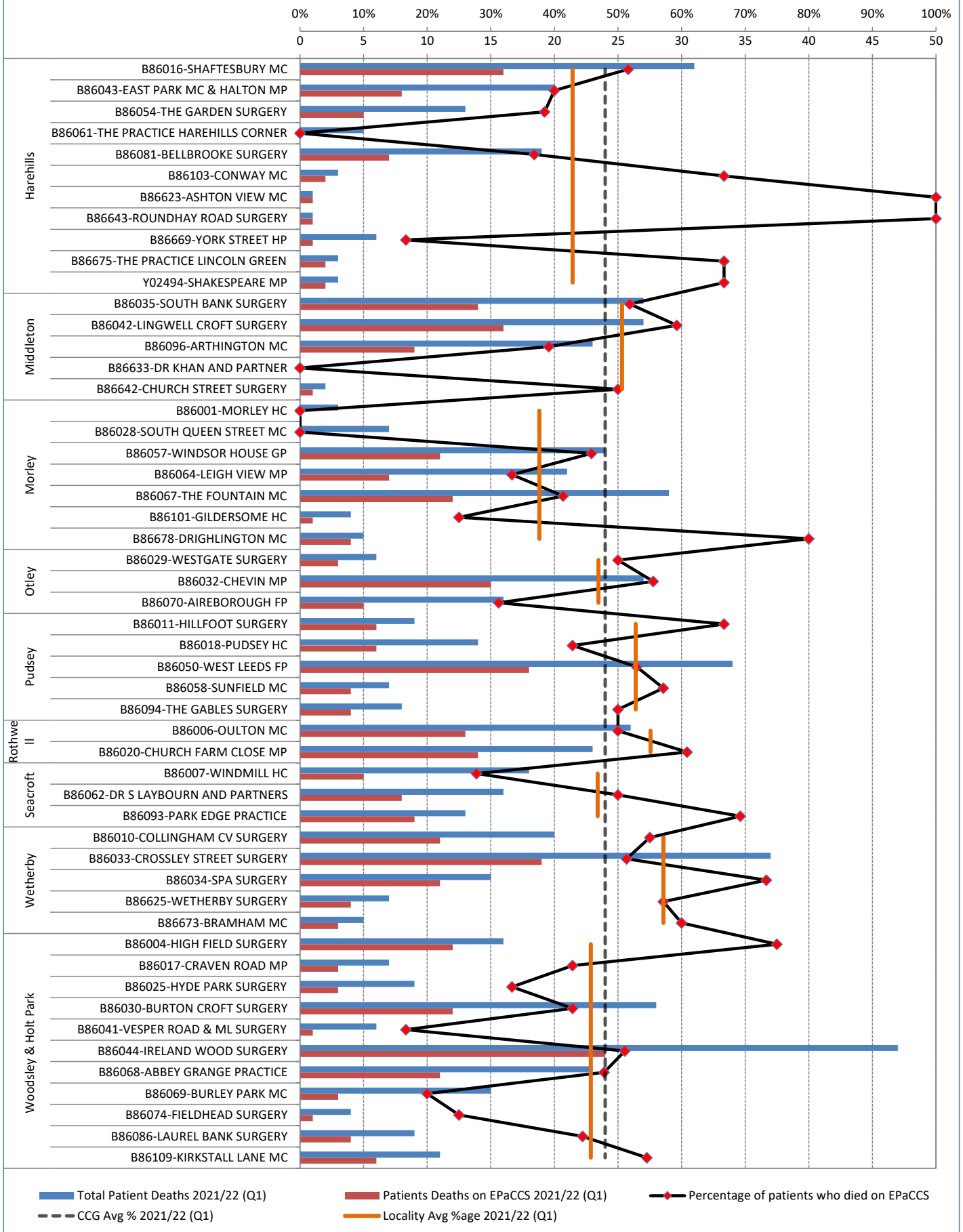


Part 1 - GP Practice EPaCCS Data 2021/22 Report (Q1)

NHS Leeds CCG

C1.1b Patients who died and were included on EPaCCS - NHS Leeds CCG (Part 2 of 2)

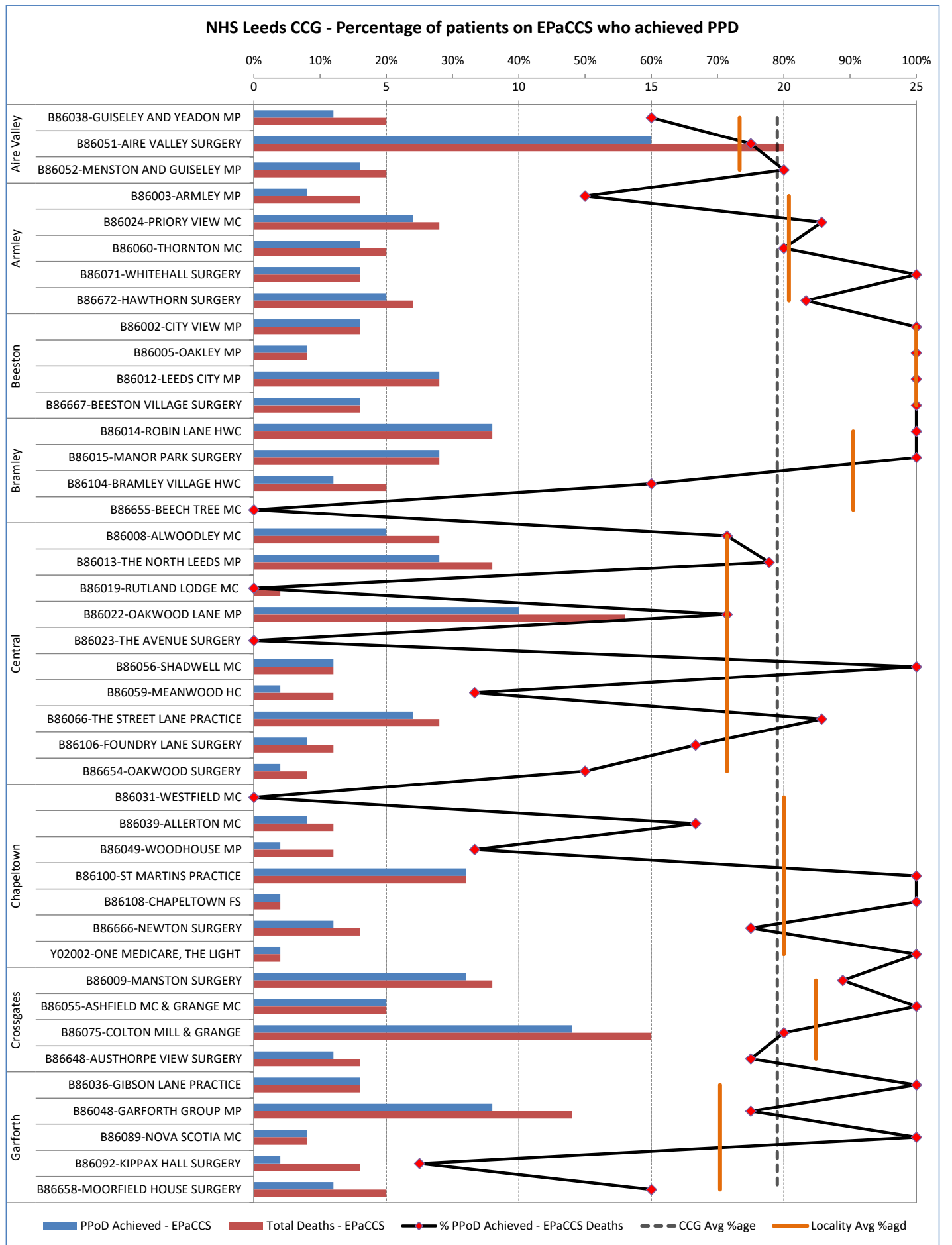
NHS Leeds CCG - Percentage of patients who died on EPaCCS



Part 1 - GP Practice EPaCCS Data
2021/22 Report (Q1)

NHS Leeds CCG

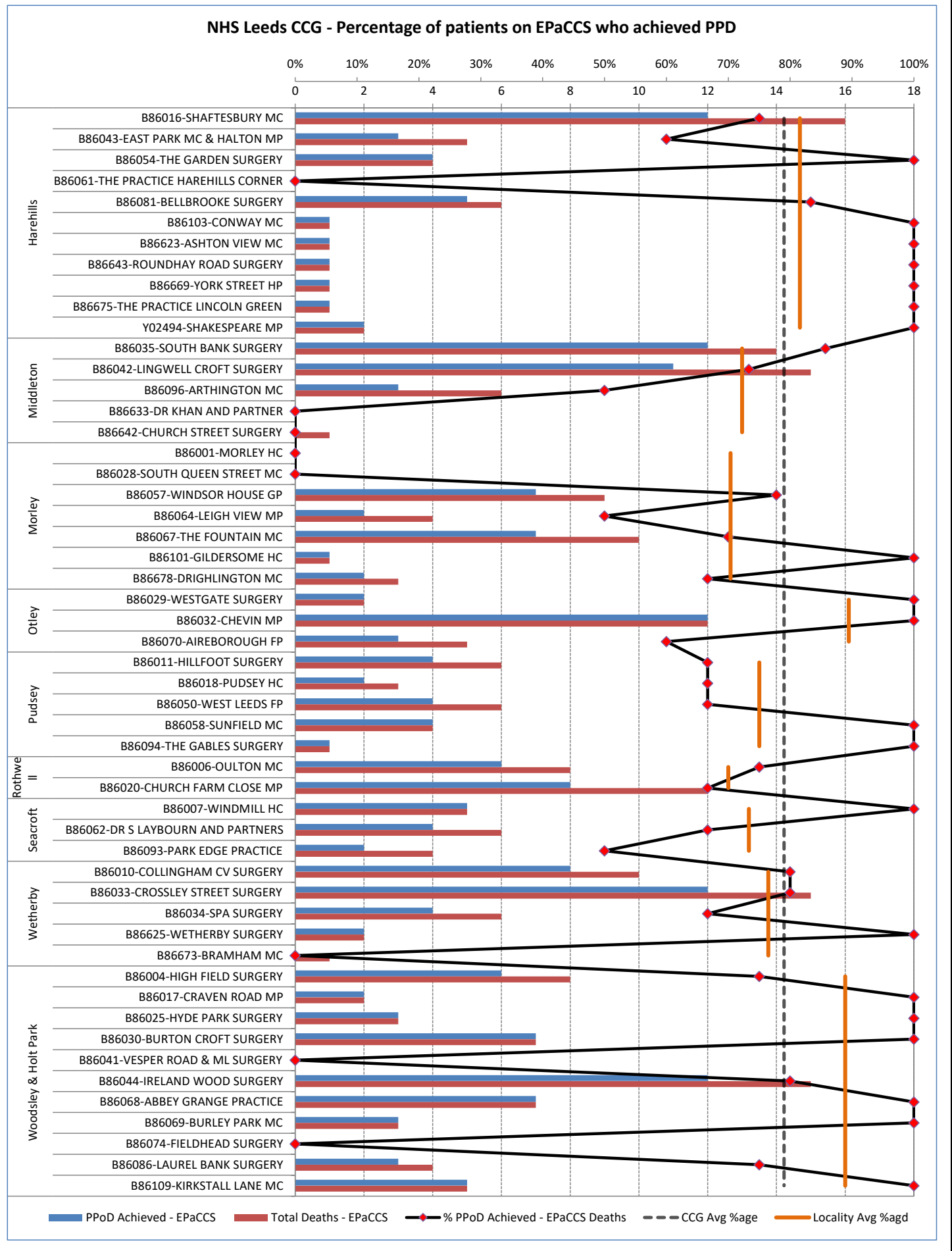
C1.2a Percentage of Patients on EPaCCS who have achieved Preferred Place of Death - NHS Leeds CCG (Part 1 of 2)



Part 1 - GP Practice EPaCCS Data
2021/22 Report (Q1)

NHS Leeds CCG

C1.2b Percentage of Patients on EPaCCS who have achieved Preferred Place of Death - NHS Leeds CCG (Part 2 of 2)

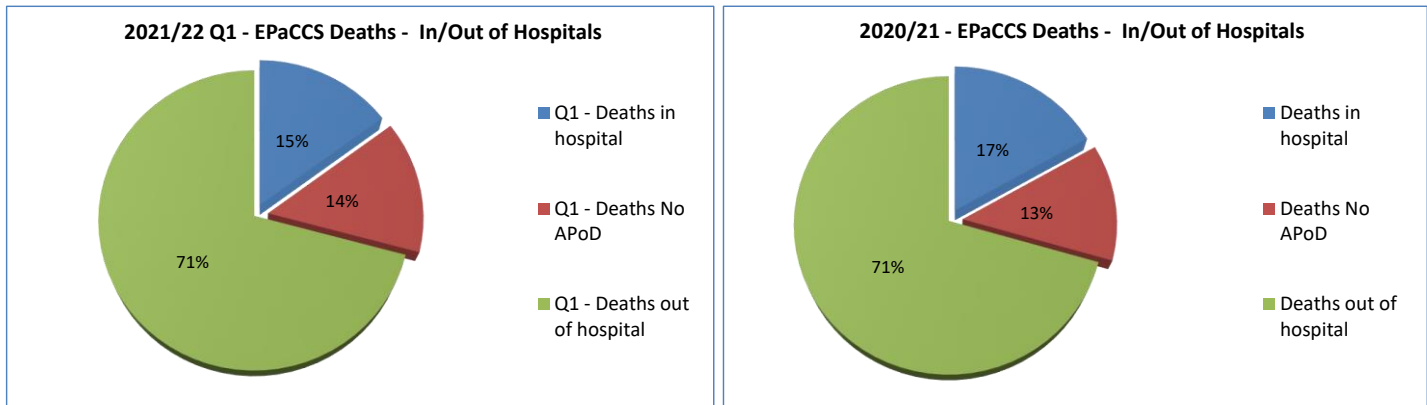


Part 2 - Leeds Clinical Commissioning Group (CCG) EPaCCS Data 2021/22 Report (Q1)

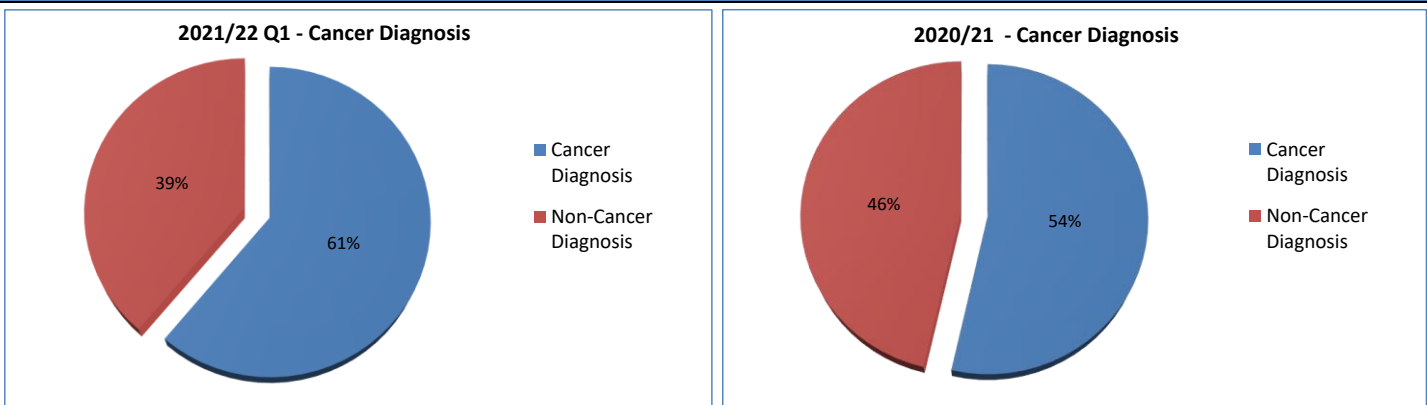
C2.1 Total patient deaths in and out of hospital and total deaths by CCG

	Q1		Q2		Q3		Q4		Total	
	EPaCCS		EPaCCS		EPaCCS		EPaCCS		EPaCCS	
1. Total deaths in hospital?	101	15%							101	15%
2. Total deaths out of hospital?	481	71%							481	71%
3. Total number of deaths with No APoD	97	14%							97	14%
4. Total number of deaths in Leeds CCG	All	EPaCCS	All	EPaCCS	All	EPaCCS	All	EPaCCS	All	EPaCCS
	1415	679							1415	679

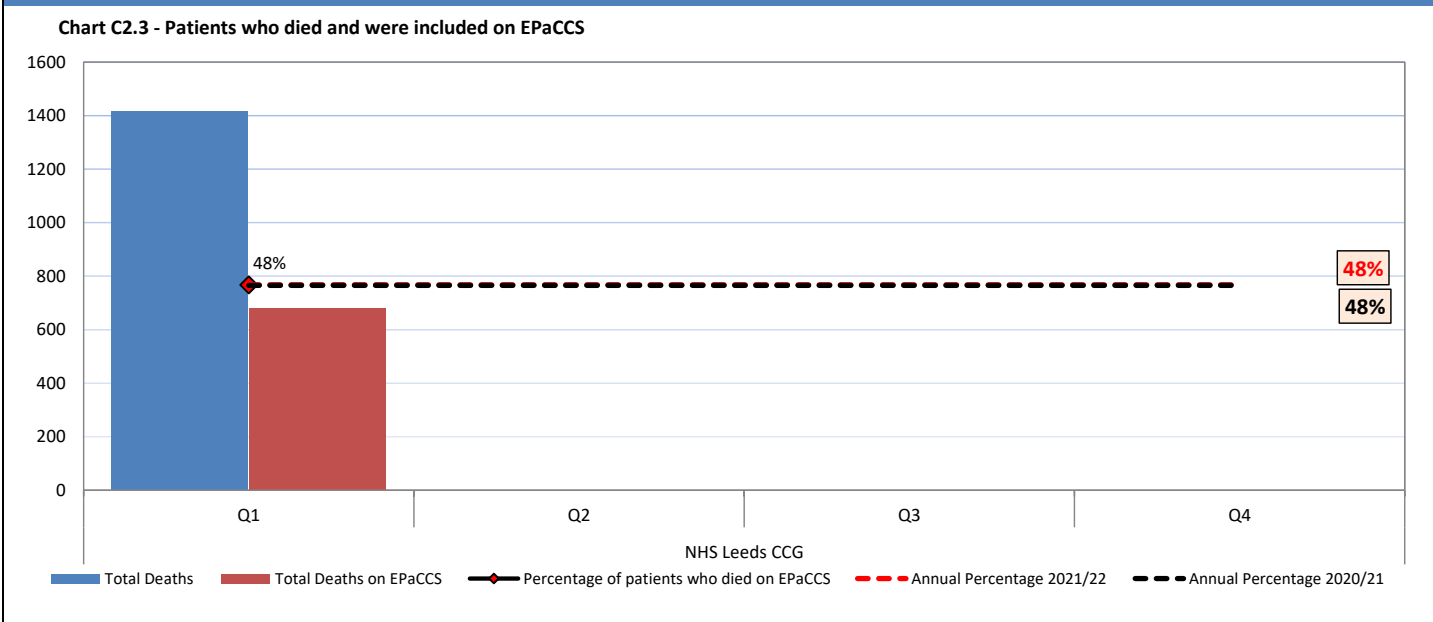
Chart C2.1a - Percentage deaths in hospital / out of hospital for 2021/22 Report (Q1) compared with previous year.



C2.2 Patients with a Cancer Diagnosis recorded at any point in life (2021/22 Report (Q1) compared with previous year)



C2.3 Patients who died and were included on EPaCCS

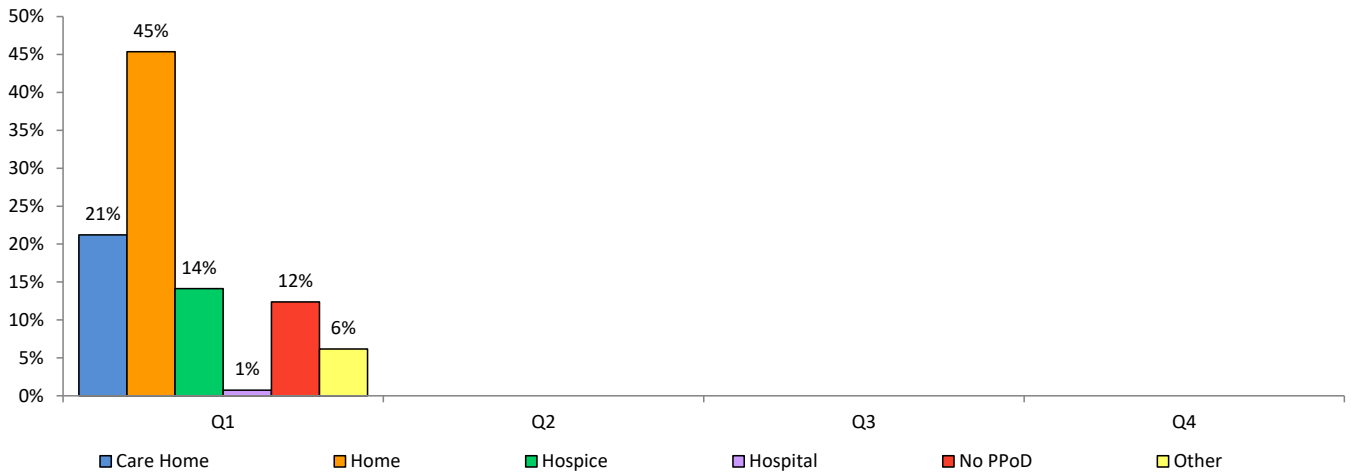


Part 2 - Leeds Clinical Commissioning Group (CCG) EPaCCS Data 2021/22 Report (Q1)

C2.4 Preferred place of death recorded by CCG

		NHS Leeds CCG			
	Preferred Place of Death	Q1	Q2	Q3	Q4
1	Care Home	144			
2	Home	308			
3	Hospice	96			
4	Hospital	5			
5	No PPOD (preferred place of death)	84			
6	Undecided/Declined	42			
	Total	679			

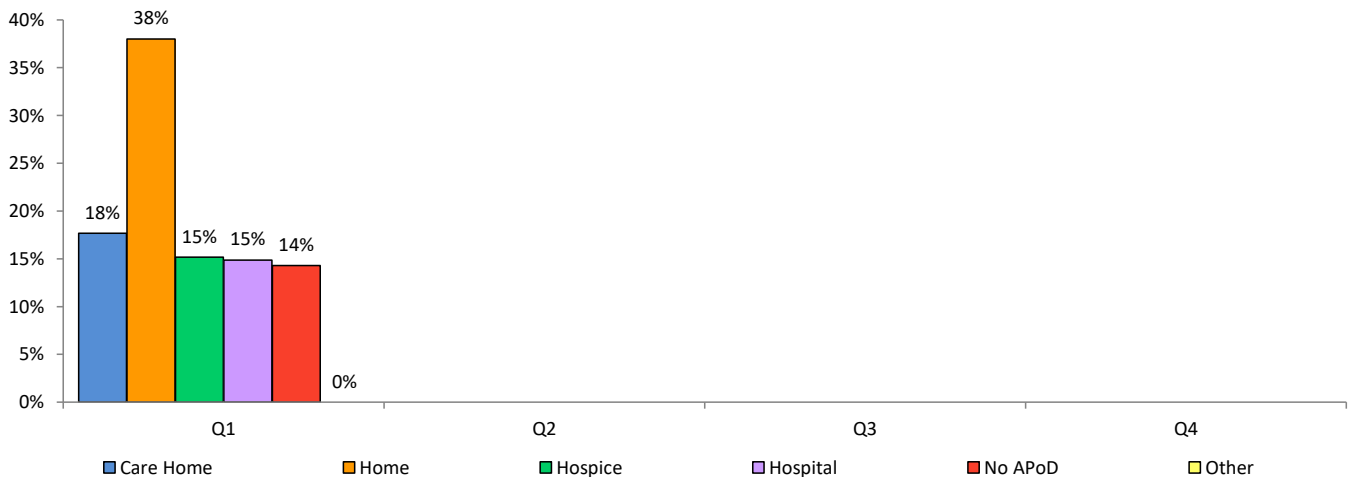
Preferred Place of Death by CCG - EPaCCS Deaths (as a %age of CCG Total)



C2.5 Actual place of death recorded by CCG

		NHS Leeds CCG			
	Actual Place of Death	Q1	Q2	Q3	Q4
1	Care Home	120			
2	Home	258			
3	Hospice	103			
4	Hospital	101			
5	No APoD (actual place of death)	97			
6	Other	0			
	Total	679			

Actual Place of Death by CCG - EPaCCS Deaths (as a %age of CCG Total)

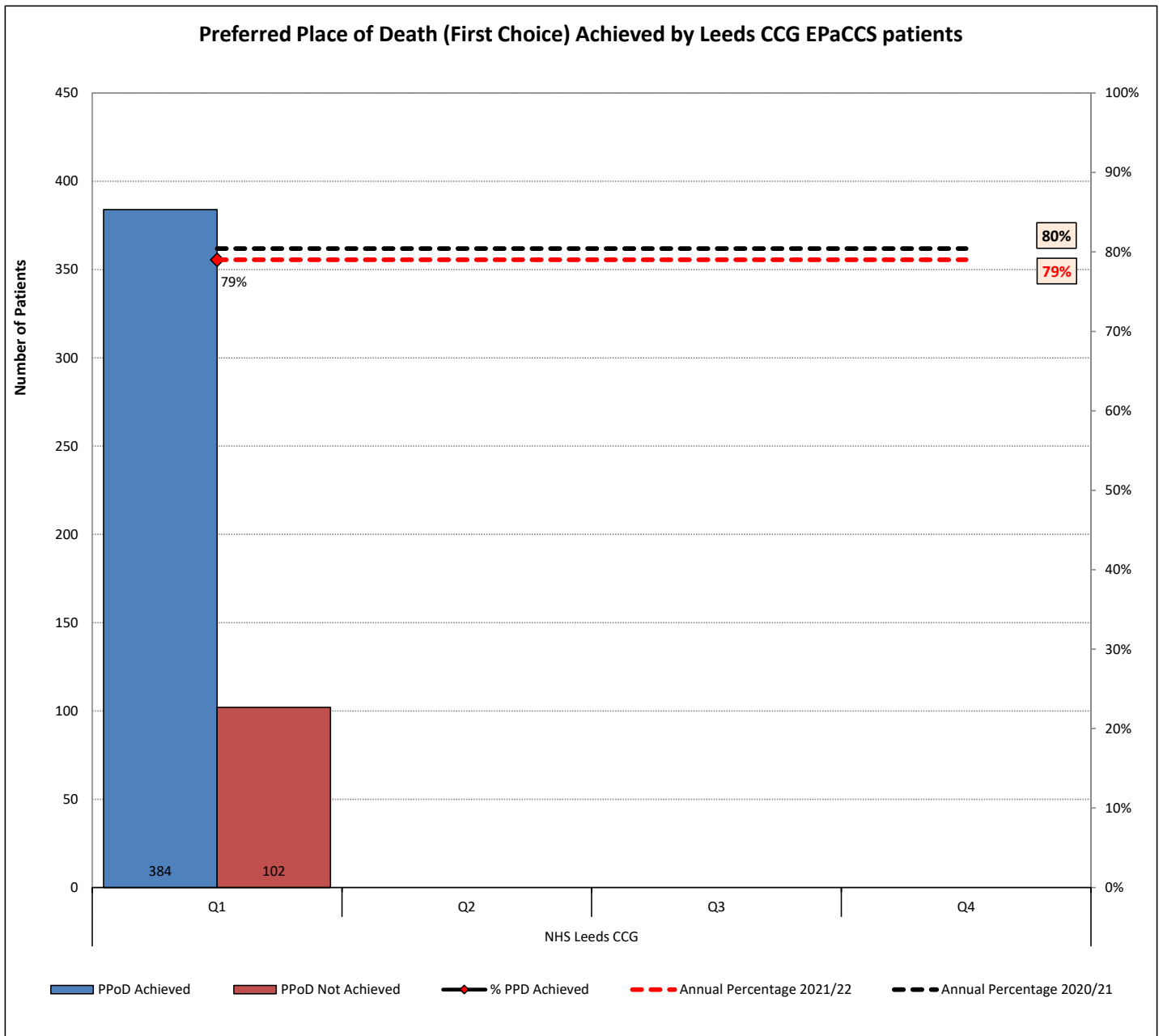


Part 2 - Leeds Clinical Commissioning Group (CCG) EPaCCS Data 2021/22 Report (Q1)

C2.6 Preferred Place of Death Achieved (First Choice) by Leeds CCG EPaCCS patients

CCG	Qtr	PPoD Achieved	PPoD Not Achieved	% PPD Achieved
NHS Leeds CCG	Q1	384	102	79%
	Q2			
	Q3			
	Q4			
	Total	384	102	79%

NOTE: Only patients with both PPoD and APoD recorded are included in this analysis



Part 2 - Leeds Clinical Commissioning Group (CCG) EPaCCS Data 2021/22 Report (Q1)

C2.7 Duration of time (in weeks) the patients were on EPaCCS (Leeds City wide)

Chart - Duration of time (in weeks) the patients were on EPaCCS by Quarter (as %age of CCG Total)

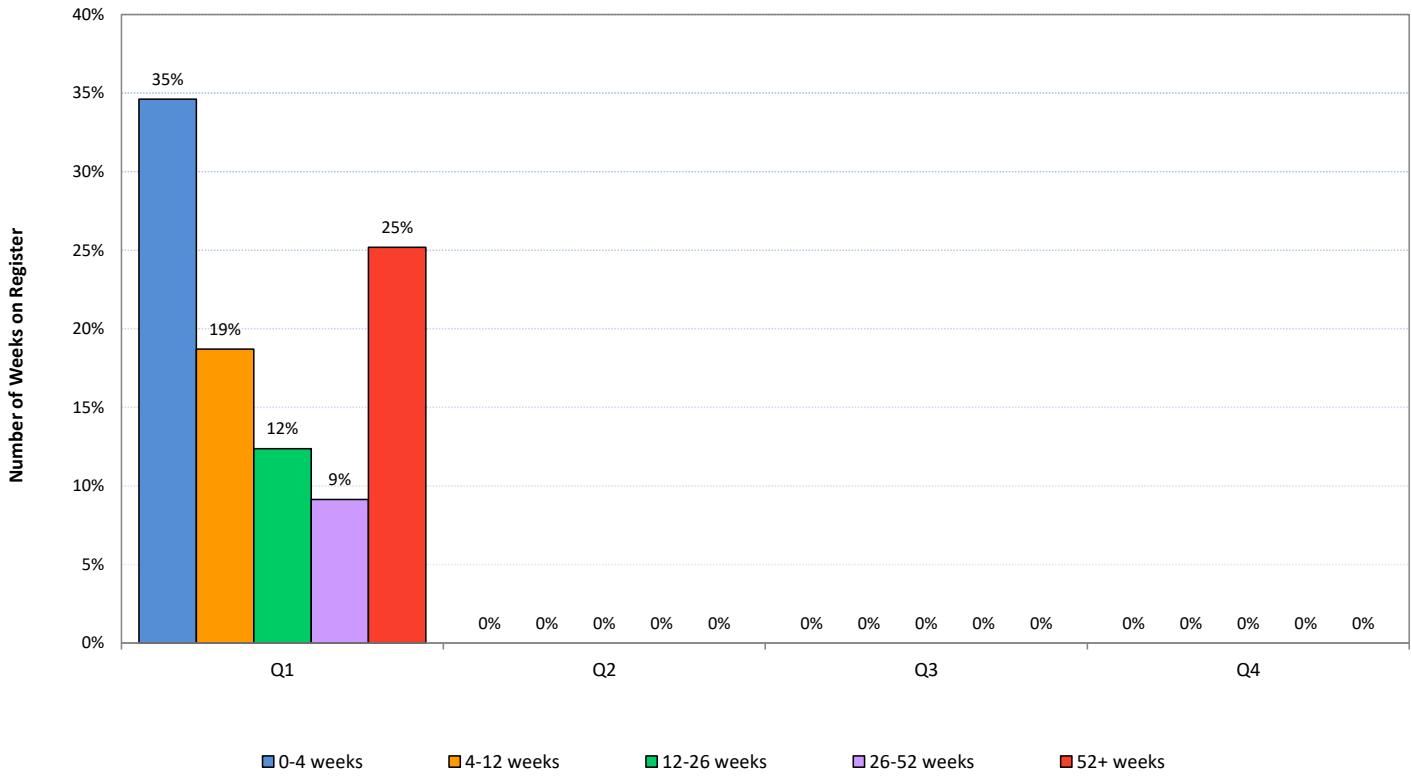
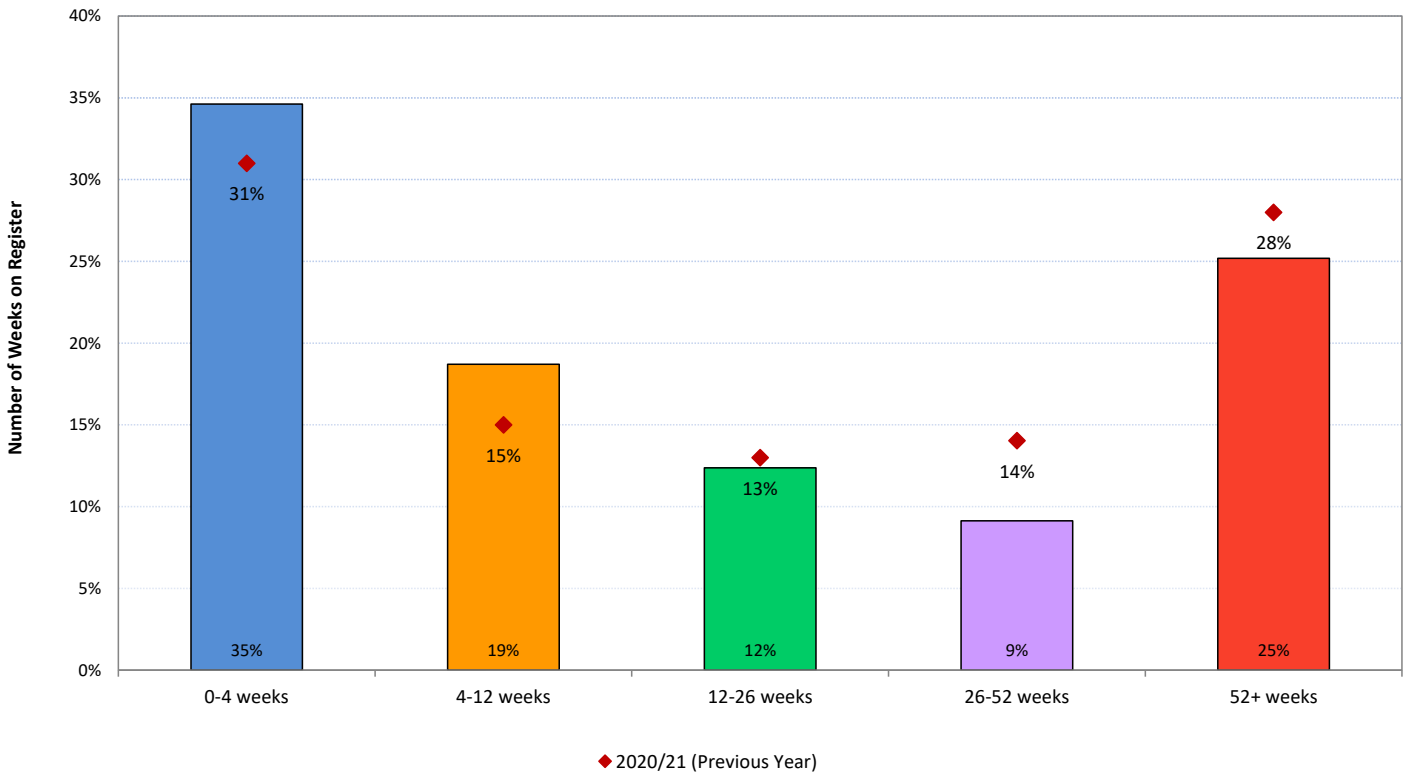


Chart - Duration of time (in weeks) the patients were on EPaCCS by CCG (as %age of CCG Total)

2021-22 (YTD) vs 2020-21



Part 2 - Leeds Clinical Commissioning Group (CCG) EPaCCS Data 2021/22 Report (Q1)

C2.8a Unplanned hospital usage (A&E and Non-Elective Admissions) by EPaCCS Patients in the last 90 days of their life.

Please note that the data below only relates to patients who have died in a particular quarter and looking back 90 days from their respective date of death.

The actual hospital visits/admissions could have taken place in a previous quarter i.e. a patient who died on 01 April 2021 may have accessed the hospital between Jan to Mar 2021

Activity and Cost Breakdown

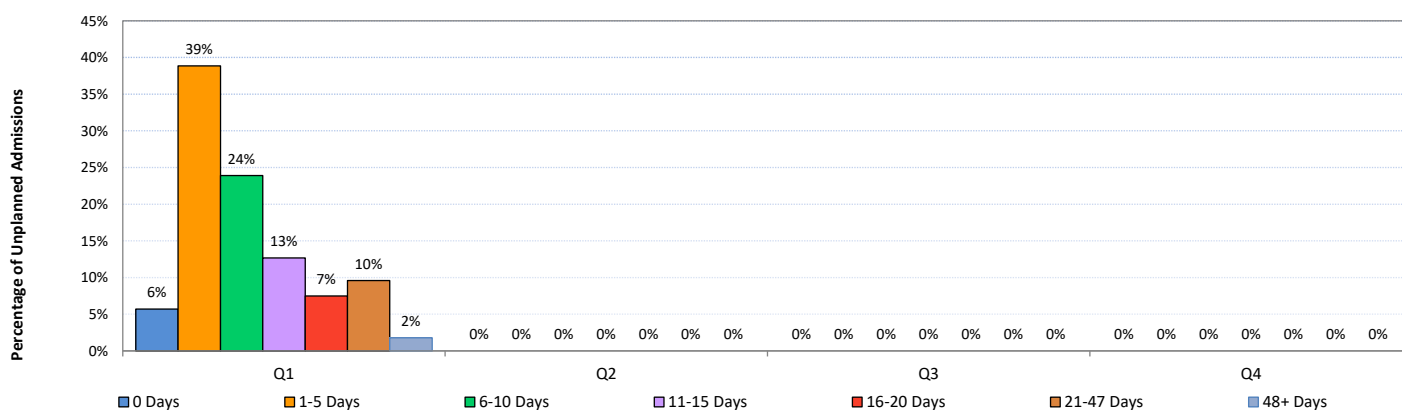
	Q1		Q2		Q3		Q4		Total	
A&E visits	Activity	Cost	Activity	Cost	Activity	Cost	Activity	Cost	Activity	Cost
Unique Patients	368								368	
Total Activity and Cost	535	£115,489							535	£115,489
Average Activity and Cost	1.5	£314							1.5	£314
Planned Admissions (EL)	Activity	Cost	Activity	Cost	Activity	Cost	Activity	Cost	Activity	Cost
Unique Patients	25								25	
Total Activity and Cost	29	£90,730							29	£90,730
Average Activity and Cost	1.2	£3,629.20							1.2	£3,629
Unplanned Admissions (NEL)	Activity	Cost	Activity	Cost	Activity	Cost	Activity	Cost	Activity	Cost
Unique Patients	415								415	
Total Activity and Cost	615	£2,797,577							615	£2,797,577
Average Activity and Cost	1.5	£6,741							1.5	£6,741

Average and Median Number of Hospital Inpatient bed days/person in last 90 days of life

	Q1		Q2		Q3		Q4	
Total Bed Days Elective	143							
Total Bed Days Non-Elective	5962							
Total	6105							
	Average	Median	Average	Median	Average	Median	Average	Median
Elective Admissions	5.7	2.0						
Non-Elective Admissions	14.4	10.0						
All Inpatient Admissions	14.4	11.0						

Length of Stay Breakdown for Unplanned Admissions (Non-Elective Inpatient)

	Q1		Q2		Q3		Q4		Total	
Length of Stay (Unplanned Admissions)	No. of Admissions		No. of Admissions		No. of Admissions		No. of Admissions		No. of Admissions	
0 Days	35								35	
1-5 Days	239								239	
6-10 Days	147								147	
11-15 Days	78								78	
16-20 Days	46								46	
21-47 Days	59								59	
48+ Days	11								11	
	615								615	



Percentage of patients with 3 or more Unplanned Admissions (Non-Elective Inpatient)

	Q1	Q2	Q3	Q4
%age against ALL EPaCCS	6%			

**Part 2 - Leeds Clinical Commissioning Group (CCG) EPaCCS Data
2021/22 Report (Q1)**

C2.8b Reasons for Unplanned hospital usage (Non-Elective Admissions) by EPaCCS Patients in the last 90 days of their life.

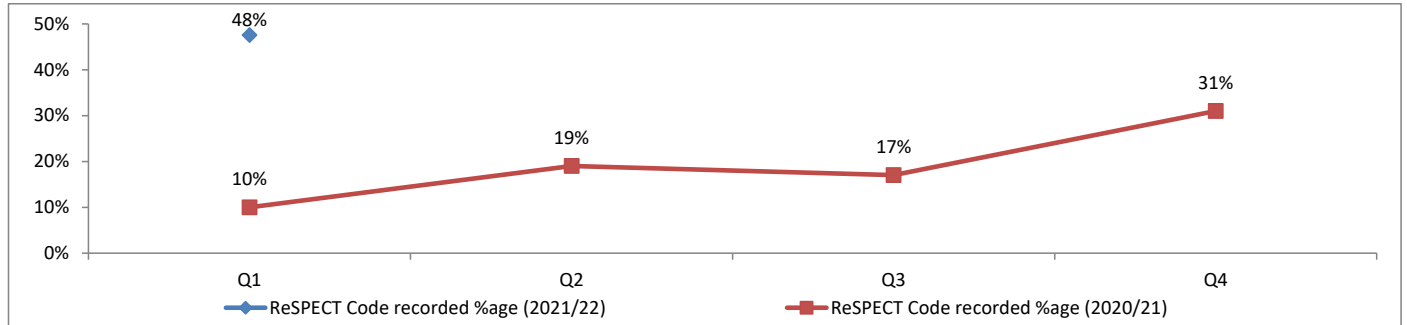
Top 5 Reasons for Unplanned Admissions (Year to Date)

HRG Chapter	Primary Diagnosis	Q1	Q2	Q3	Q4
Respiratory System Procedures and Disorders		24.72%			
	Diseases of the respiratory system	18.86%			
	Neoplasms	4.72%			
	Symptoms, signs and abnormal clinical and laboratory findings, not elsewhere classified	0.16%			
	Diseases of the circulatory system	0.98%			
Gastrointestinal Tract Disorders		11.87%			
	Neoplasms	4.39%			
	Diseases of the digestive system	5.37%			
	Symptoms, signs and abnormal clinical and laboratory findings, not elsewhere classified	0.98%			
	Codes for special purposes	0.65%			
	Certain infectious and parasitic diseases	0.49%			
Nervous System Procedures and Disorders		9.27%			
	Diseases of the circulatory system	4.07%			
	Neoplasms	2.11%			
	Diseases of the nervous system	1.46%			
	Symptoms, signs and abnormal clinical and laboratory findings, not elsewhere classified	0.98%			
	Injury, poisoning and certain other consequences of external causes	0.65%			
Cardiac Disorders		6.18%			
	Diseases of the circulatory system	5.69%			
	Symptoms, signs and abnormal clinical and laboratory findings, not elsewhere classified	0.16%			
	Injury, poisoning and certain other consequences of external causes	0.33%			
Renal Procedures and Disorders		5.85%			
	Diseases of the genitourinary system	5.85%			
	Injury, poisoning and certain other consequences of external causes	0.00%			

Part 2 - Leeds Clinical Commissioning Group (CCG) EPaCCS Data 2021/22 Report (Q1)

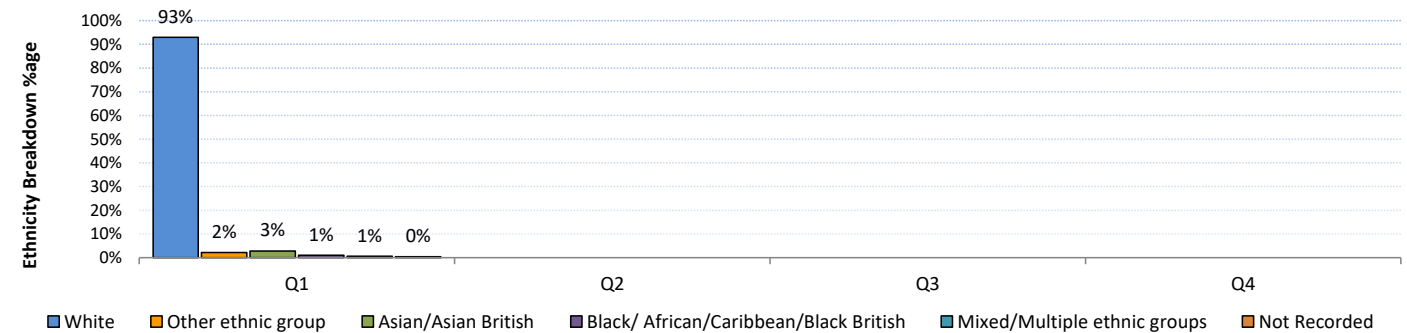
C2.9 EPaCCS patients who have a ReSPECT (Recommended Summary Plan for Emergency Care and Treatment) Code recorded on the system.

Patients with ReSPECT Code	NHS Leeds CCG							
	Q1		Q2		Q3		Q4	
ReSPECT Code recorded	323	48%						
ReSPECT Code not recorded	356	52%						
Total	679							



C2.10 Ethnicity Breakdown of EPaCCS patients

Ethnicity Breakdown	NHS Leeds CCG							
	Q1		Q2		Q3		Q4	
White	631	93%						
Other ethnic group	15	2%						
Asian/Asian British	19	3%						
Black/ African/Caribbean/Black British	7	1%						
Mixed/Multiple ethnic groups	4	1%						
Not Recorded	3	0%						
Total	679							



Ethnicity Breakdown comparison of current 2020/21 Year to Date data with 2019/20

