



EPaCCS Outcome Report

NHS Leeds CCG

2020/21 Report (Q2) - CCG Level

Data Source : SystmOne and EMIS

Data Provided by : Health Care Hub (Leeds), Leeds Community Healthcare, St Gemma's Hospice, Sue Ryder
 Wheatfields Hospice and Data Quality Team (NHS Leeds CCG)

Report Compiled by : Business Intelligence Team, NHS Leeds CCG

| | Page |
|--|-------------|
| Summary | 3 |
| Part 1 - GP Practice EPaCCS Data | |
| C1.1a Patients who died and were included on EPaCCS - NHS Leeds CCG (Part 1 of 2) | 4 |
| C1.1b Patients who died and were included on EPaCCS - NHS Leeds CCG (Part 2 of 2) | 5 |
| C1.2a Percentage of Patients on EPaCCS who have achieved Preferred Place of Death - NHS Leeds CCG (Part 1 of 2) | 6 |
| C1.2b Percentage of Patients on EPaCCS who have achieved Preferred Place of Death - NHS Leeds CCG (Part 2 of 2) | 7 |
| | |
| Part 2 - Leeds CCGs EPaCCS Data | |
| C2.1 Total patient deaths in and out of hospital and total deaths by CCG | 8 |
| C2.2 Patients with a Cancer Diagnosis recorded at any point in life (2020/21 Report (Q2) compared with previous year) | 8 |
| C2.3 Patients who died and were included on EPaCCS | 8 |
| C2.4 Preferred place of death recorded by CCG | 9 |
| C2.5 Actual place of death recorded by CCG | 9 |
| C2.6 Preferred Place of Death Achieved (First Choice) by Leeds CCG EPaCCS patients | 10 |
| C2.7 Duration of time (in weeks) the patients were on EPaCCS (Leeds City wide) | 11 |
| C2.8a Unplanned hospital usage (A&E and Non-Elective Admissions) by EPaCCS Patients in the last 90 days of their life. | 12 |
| C2.8b Reasons for Unplanned hospital usage (Non-Elective Admissions) by EPaCCS Patients in the last 90 days of their life. | 13 |
| C2.9 EPaCCS patients who have a ReSPECT (Recommended Summary Plan for Emergency Care and Treatment) Code recorded on the system. | 14 |
| C2.10 Ethnicity Breakdown of EPaCCS patients | 14 |

EPaCCS Outcome Report

The Electronic Palliative Care Coordination System (EPaCCS) is an electronic record that supports advance care planning conversations and improves the coordination of care for people approaching the end of life.

It provides a summary of key recommendations, preferences and information essential to the high quality care for patients with palliative care needs and those choosing to plan ahead, irrespective of prognosis. Local and national data shows that when patients are given the opportunity to discuss and share their preferences they are more likely to achieve their end of life care goals.

This is a 2020-21 (Q1-Q2) Leeds EPaCCS report, combining SystemOne and EMIS data for patients registered from all the practices across Leeds.

To ensure a comprehensive view of advance care planning it collates EPaCCS data entered by all relevant care providers: Leeds Community Healthcare community services, hospice services, community palliative care teams in addition to primary care.

These EPaCCS reports have been produced to enable you to reflect on end of life care in your practice.

Key findings of the 2020/21 Report (Q2) report are:

- ◆ 52% of adults who died in Leeds had an EPaCCS record compared to 49% the previous year.
- ◆ 77% achieved their preferred place of death this year compared to 79% last year; with 69% dying outside of hospital compared to 68% last year.
- ◆ The proportion of patients whose EPaCCS record was started more than 3 months before they died is at 53% at par when compared to 52% the previous year.
- ◆ The proportion of patients without an actual place of death recorded has increased to 15% from 12% last year.
- ◆ 133 out of 663 patients who died this quarter had a RESPECT Code recorded on the system.
- ◆ Deaths at home has significantly increased this year
 - 2019/20: Q1 161 deaths (23%), Q2 166 deaths (24%)
 - 2020/21: Q1 297 deaths (28%), Q2 225 deaths (34%)

This report covers a period of unprecedented demand across the health and social care environment: particularly given the impact of **COVID-19** on the system. It is a considerable achievement the proportion of patients being supported in their preferred place has been maintained whilst the overall proportion of people with an EPaCCS record has increased. This marks a sustained improvement on 2016-2017 when 33% of adults who died had an EPaCCS record.

The findings show that a greater proportion of people are being given opportunities to discuss, document and share their care preferences at an earlier stage and demonstrate improved data quality.

Part 1 - GP Practice EPaCCS Data 2020/21 Report (Q2)

NHS Leeds CCG

C1.1a Patients who died and were included on EPaCCS - NHS Leeds CCG (Part 1 of 2)

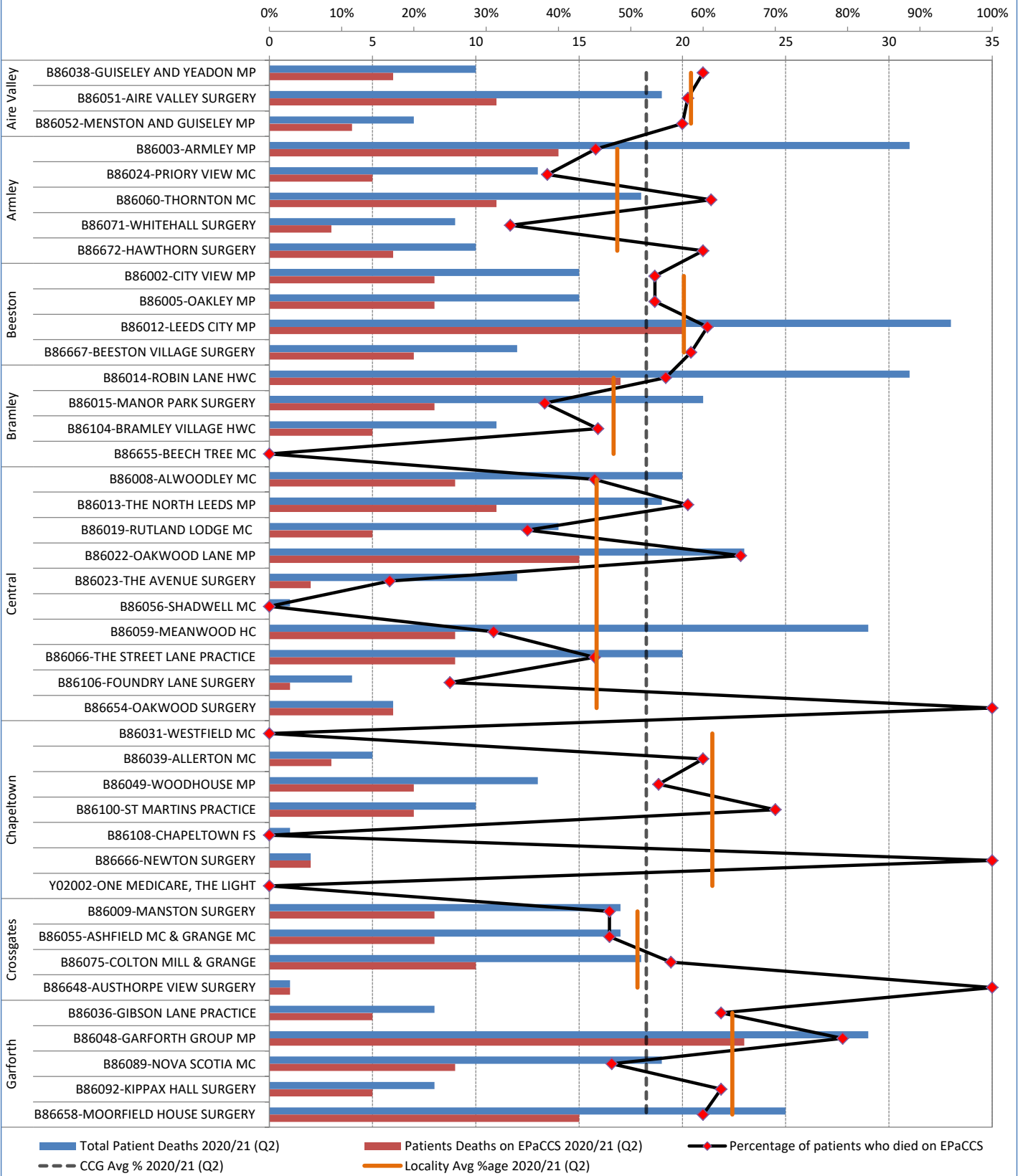
a. Number of All patient deaths?

b. Number of patients deaths on EPaCCS?

c. % of patient deaths on EPaCCS?

| | Q1 | Q2 | Q3 | Q4 | Total |
|---|------|------|----|----|-------|
| a. Number of All patient deaths? | 1995 | 1271 | | | 3266 |
| b. Number of patients deaths on EPaCCS? | 1069 | 663 | | | 1732 |
| c. % of patient deaths on EPaCCS? | 54% | 52% | | | 53% |

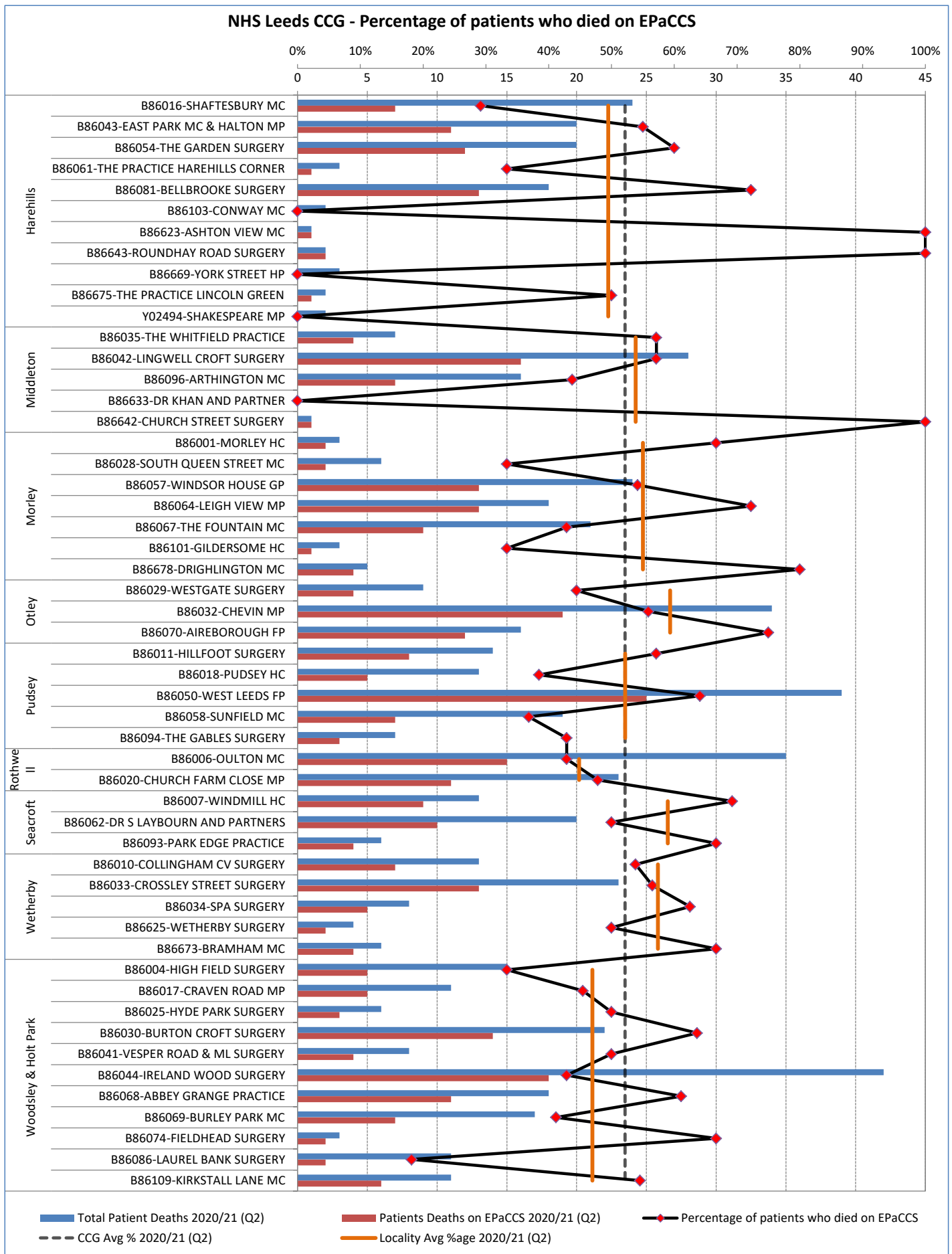
NHS Leeds CCG - Percentage of patients who died on EPaCCS



Part 1 - GP Practice EPaCCS Data
2020/21 Report (Q2)

NHS Leeds CCG

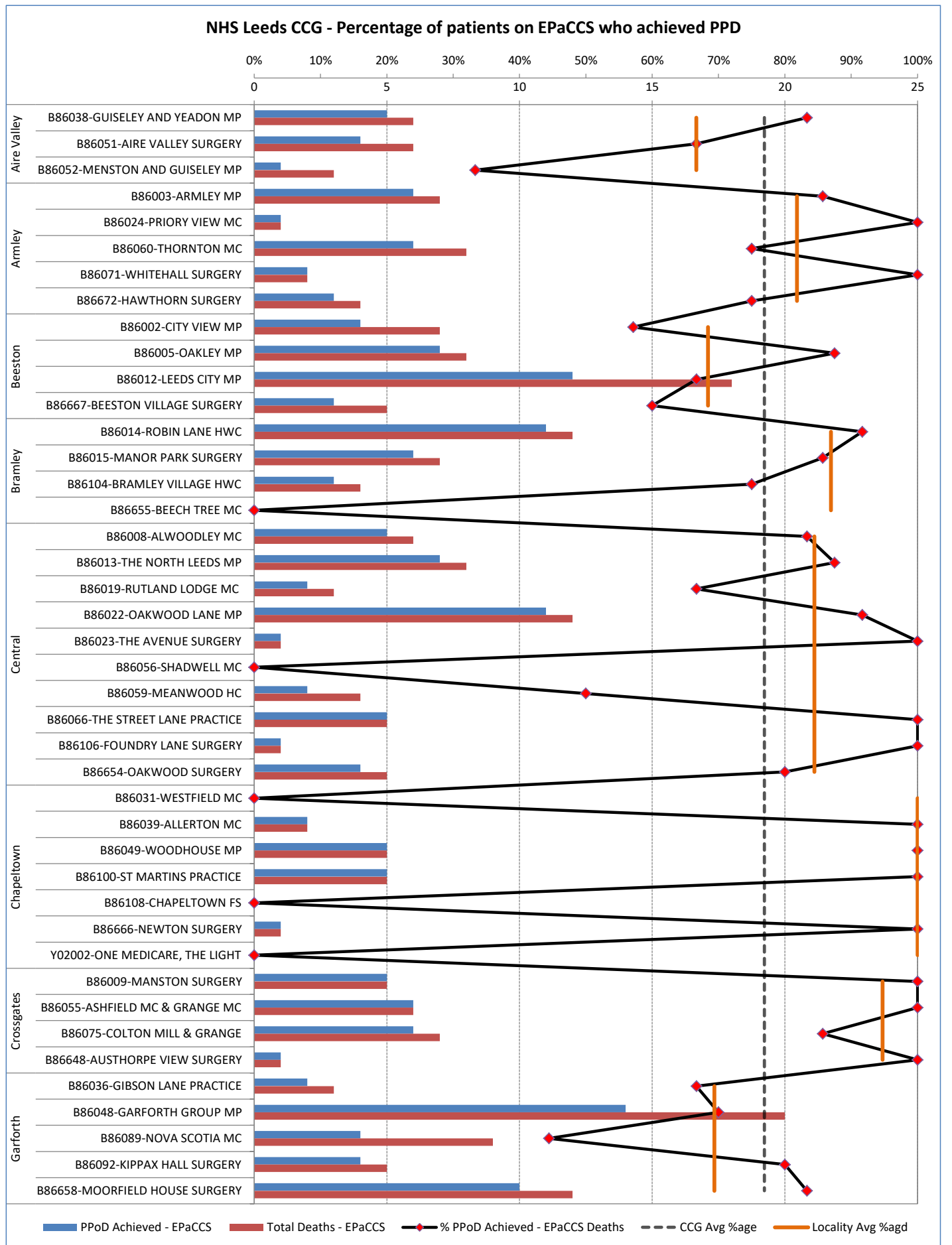
C1.1b Patients who died and were included on EPaCCS - NHS Leeds CCG (Part 2 of 2)



Part 1 - GP Practice EPaCCS Data
2020/21 Report (Q2)

NHS Leeds CCG

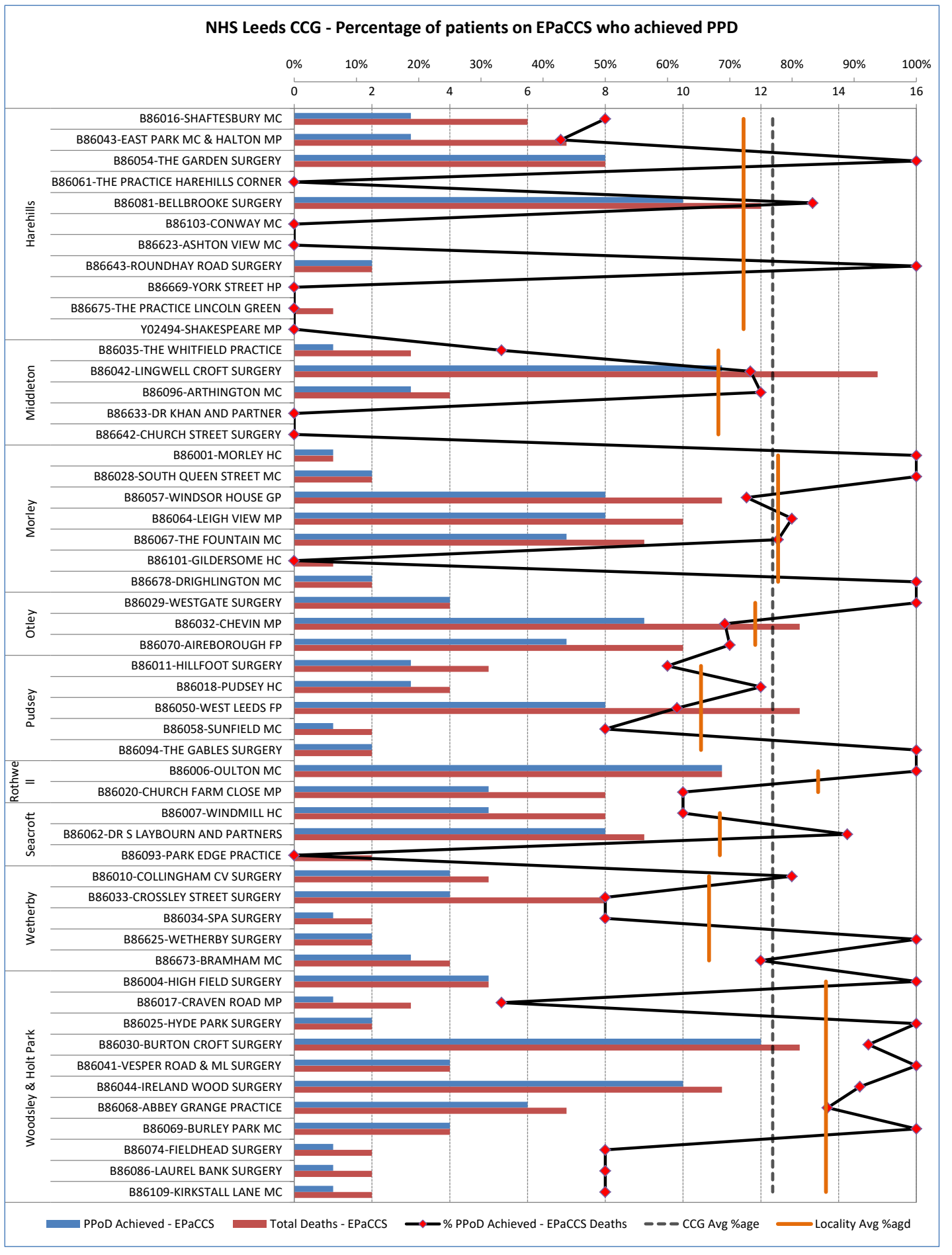
C1.2a Percentage of Patients on EPaCCS who have achieved Preferred Place of Death - NHS Leeds CCG (Part 1 of 2)



Part 1 - GP Practice EPaCCS Data
2020/21 Report (Q2)

NHS Leeds CCG

C1.2b Percentage of Patients on EPaCCS who have achieved Preferred Place of Death - NHS Leeds CCG (Part 2 of 2)

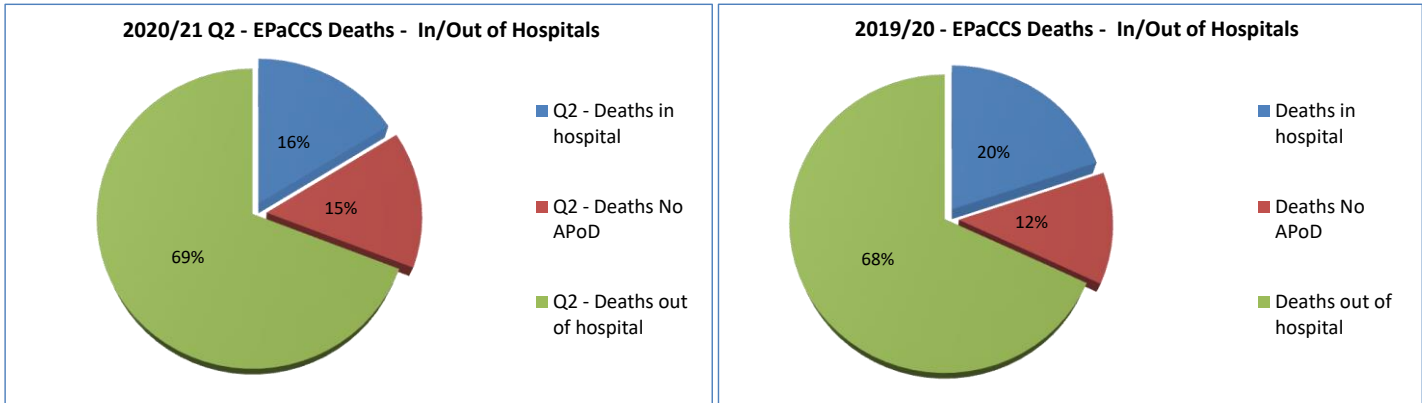


Part 2 - Leeds Clinical Commissioning Group (CCG) EPaCCS Data 2020/21 Report (Q2)

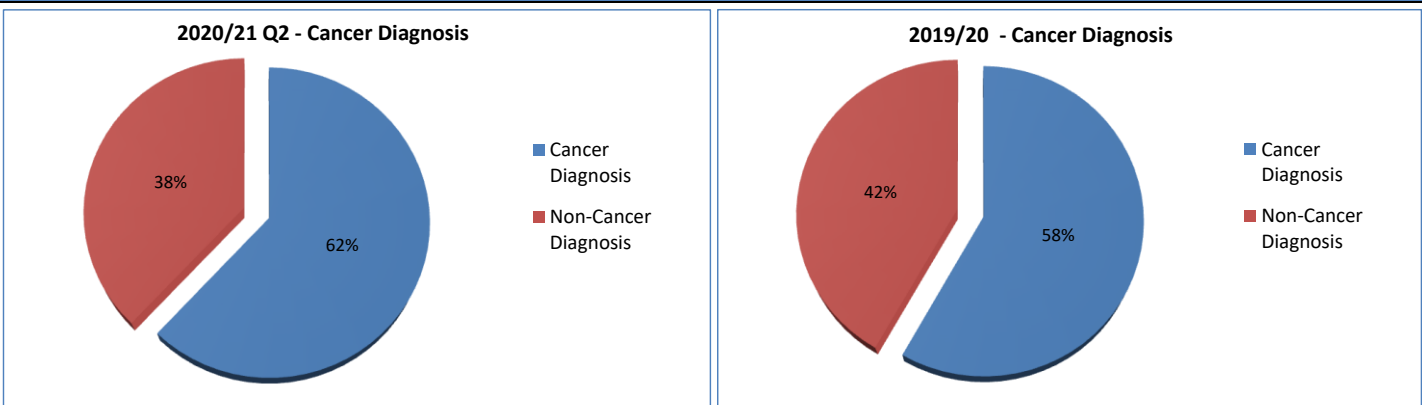
C2.1 Total patient deaths in and out of hospital and total deaths by CCG

| | Q1 | | Q2 | | Q3 | | Q4 | | Total | |
|--|--------|--------|--------|--------|--------|--------|--------|--------|--------|--------|
| | EPaCCS | | EPaCCS | | EPaCCS | | EPaCCS | | EPaCCS | |
| 1. Total deaths in hospital? | 125 | 12% | 107 | 16% | | | | | 232 | 13% |
| 2. Total deaths out of hospital? | 752 | 70% | 458 | 69% | | | | | 1210 | 70% |
| 3. Total number of deaths with No APoD | 192 | 18% | 98 | 15% | | | | | 290 | 17% |
| 4. Total number of deaths in Leeds CCG | All | EPaCCS | All | EPaCCS | All | EPaCCS | All | EPaCCS | All | EPaCCS |
| | 1995 | 1069 | 1271 | 663 | | | | | 3266 | 1732 |

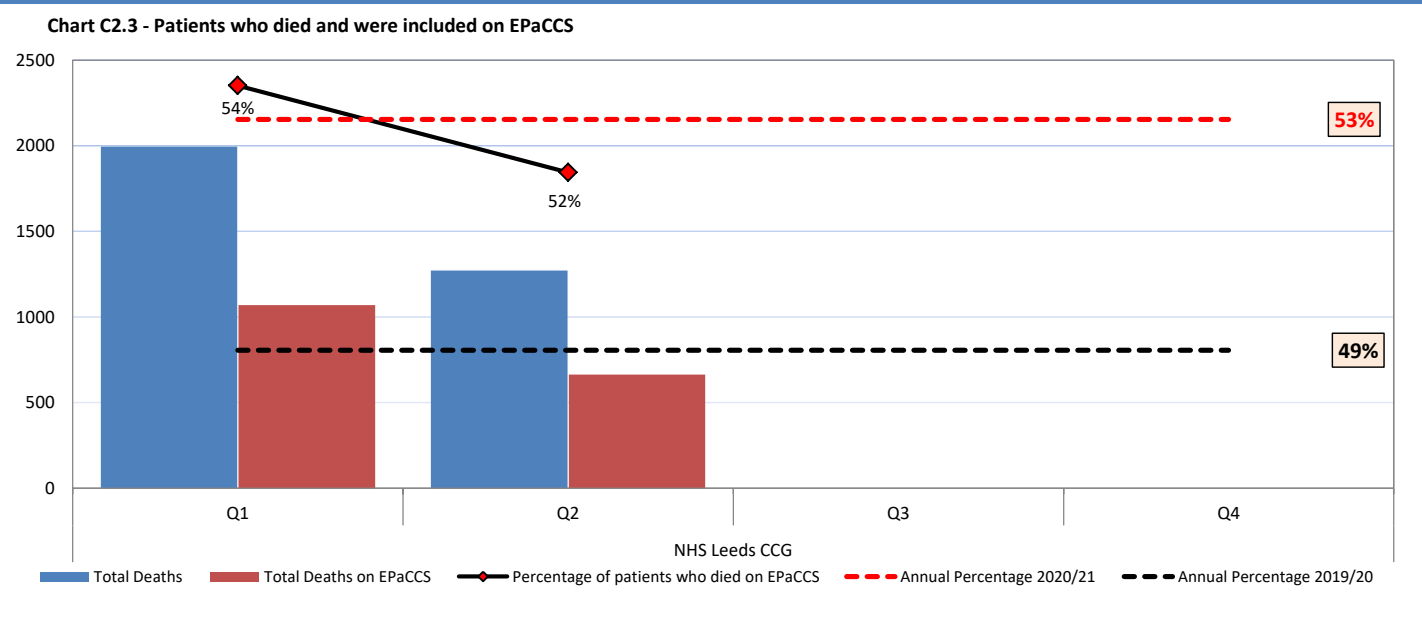
Chart C2.1a - Percentage deaths in hospital / out of hospital for 2020/21 Report (Q2) compared with previous year.



C2.2 Patients with a Cancer Diagnosis recorded at any point in life (2020/21 Report (Q2) compared with previous year)



C2.3 Patients who died and were included on EPaCCS

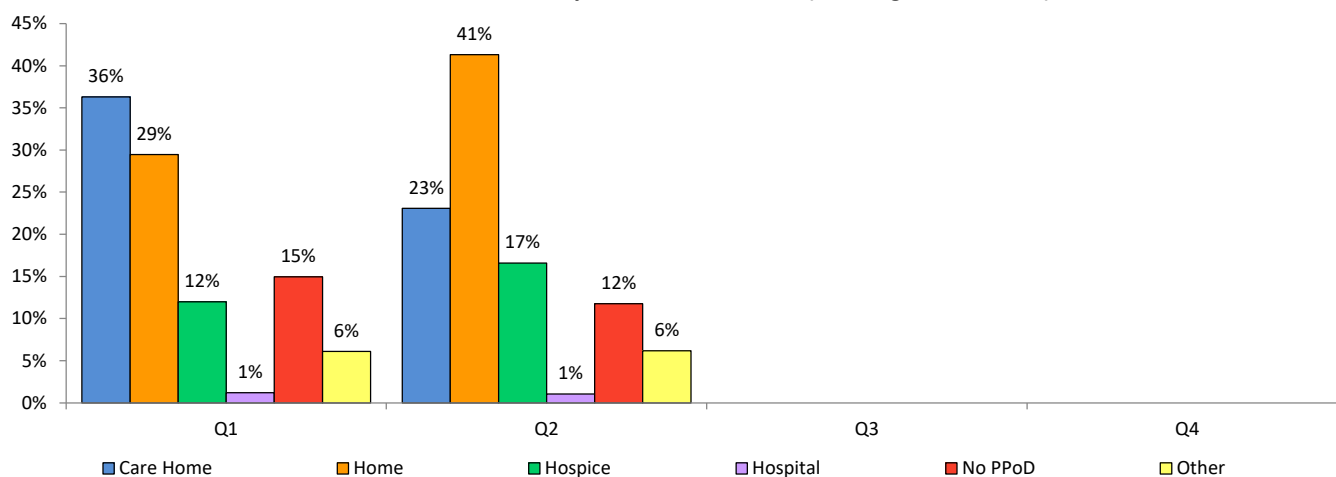


Part 2 - Leeds Clinical Commissioning Group (CCG) EPaCCS Data 2020/21 Report (Q2)

C2.4 Preferred place of death recorded by CCG

| | | NHS Leeds CCG | | | |
|---|------------------------------------|---------------|------------|----|----|
| | Preferred Place of Death | Q1 | Q2 | Q3 | Q4 |
| 1 | Care Home | 388 | 153 | | |
| 2 | Home | 315 | 274 | | |
| 3 | Hospice | 128 | 110 | | |
| 4 | Hospital | 13 | 7 | | |
| 5 | No PPOD (preferred place of death) | 160 | 78 | | |
| 6 | Undecided/Declined | 65 | 41 | | |
| | Total | 1069 | 663 | | |

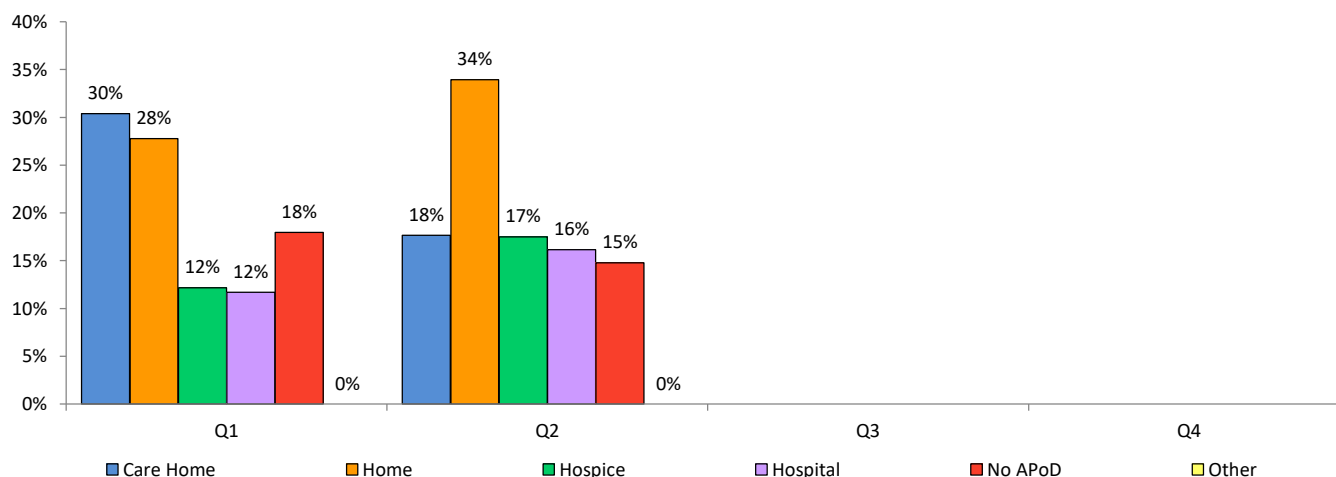
Preferred Place of Death by CCG - EPaCCS Deaths (as a %age of CCG Total)



C2.5 Actual place of death recorded by CCG

| | | NHS Leeds CCG | | | |
|---|---------------------------------|---------------|------------|----|----|
| | Actual Place of Death | Q1 | Q2 | Q3 | Q4 |
| 1 | Care Home | 325 | 117 | | |
| 2 | Home | 297 | 225 | | |
| 3 | Hospice | 130 | 116 | | |
| 4 | Hospital | 125 | 107 | | |
| 5 | No APoD (actual place of death) | 192 | 98 | | |
| 6 | Other | 0 | 0 | | |
| | Total | 1069 | 663 | | |

Actual Place of Death by CCG - EPaCCS Deaths (as a %age of CCG Total)

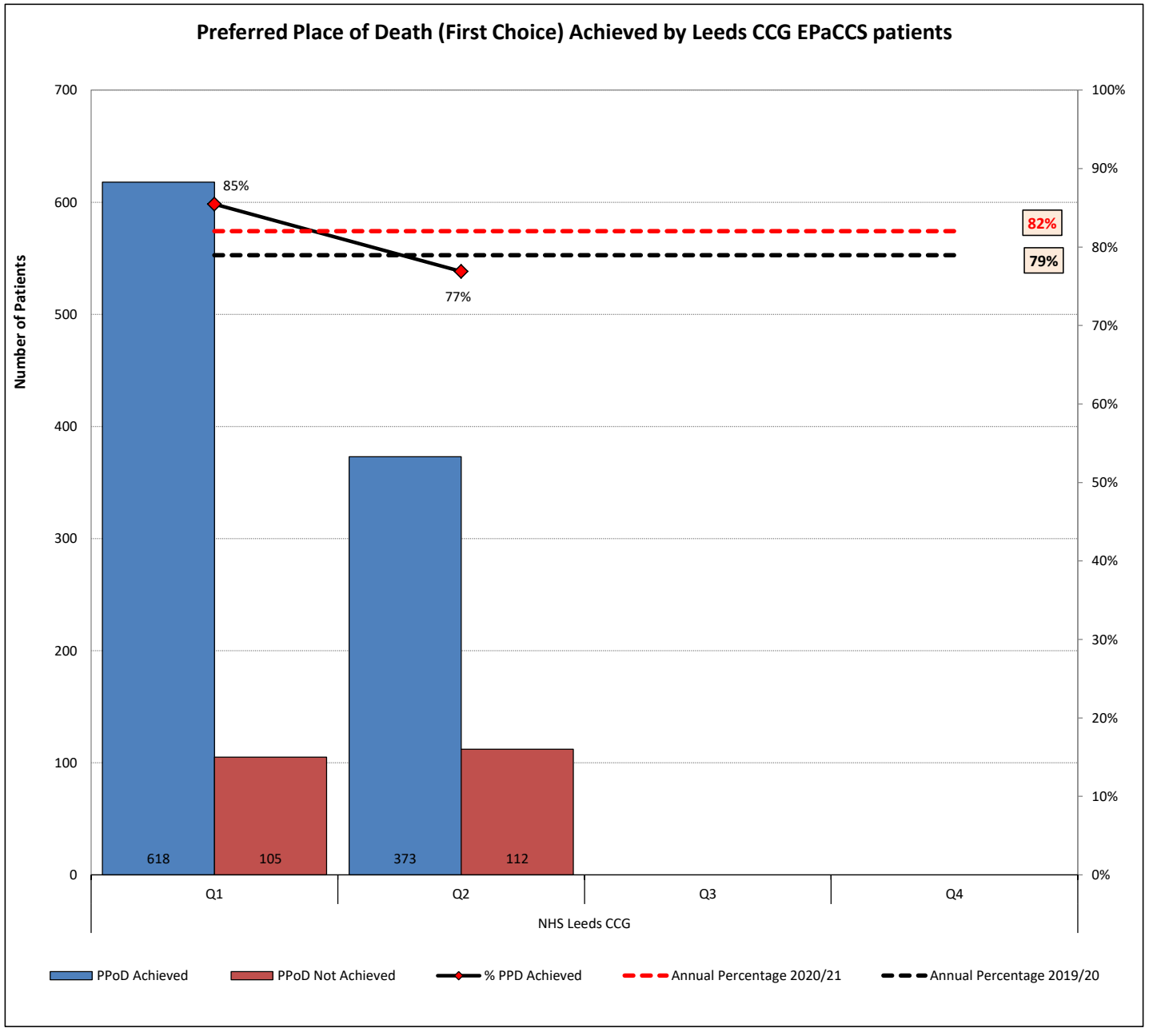


Part 2 - Leeds Clinical Commissioning Group (CCG) EPaCCS Data 2020/21 Report (Q2)

C2.6 Preferred Place of Death Achieved (First Choice) by Leeds CCG EPaCCS patients

| CCG | Qtr | PPoD Achieved | PPoD Not Achieved | % PPD Achieved |
|---------------|--------------|---------------|-------------------|----------------|
| NHS Leeds CCG | Q1 | 618 | 105 | 85% |
| | Q2 | 373 | 112 | 77% |
| | Q3 | | | |
| | Q4 | | | |
| | Total | 991 | 217 | 82% |

NOTE: Only patients with both PPoD and APoD recorded are included in this analysis



Part 2 - Leeds Clinical Commissioning Group (CCG) EPaCCS Data 2020/21 Report (Q2)

C2.7 Duration of time (in weeks) the patients were on EPaCCS (Leeds City wide)

Chart - Duration of time (in weeks) the patients were on EPaCCS by Quarter (as %age of CCG Total)

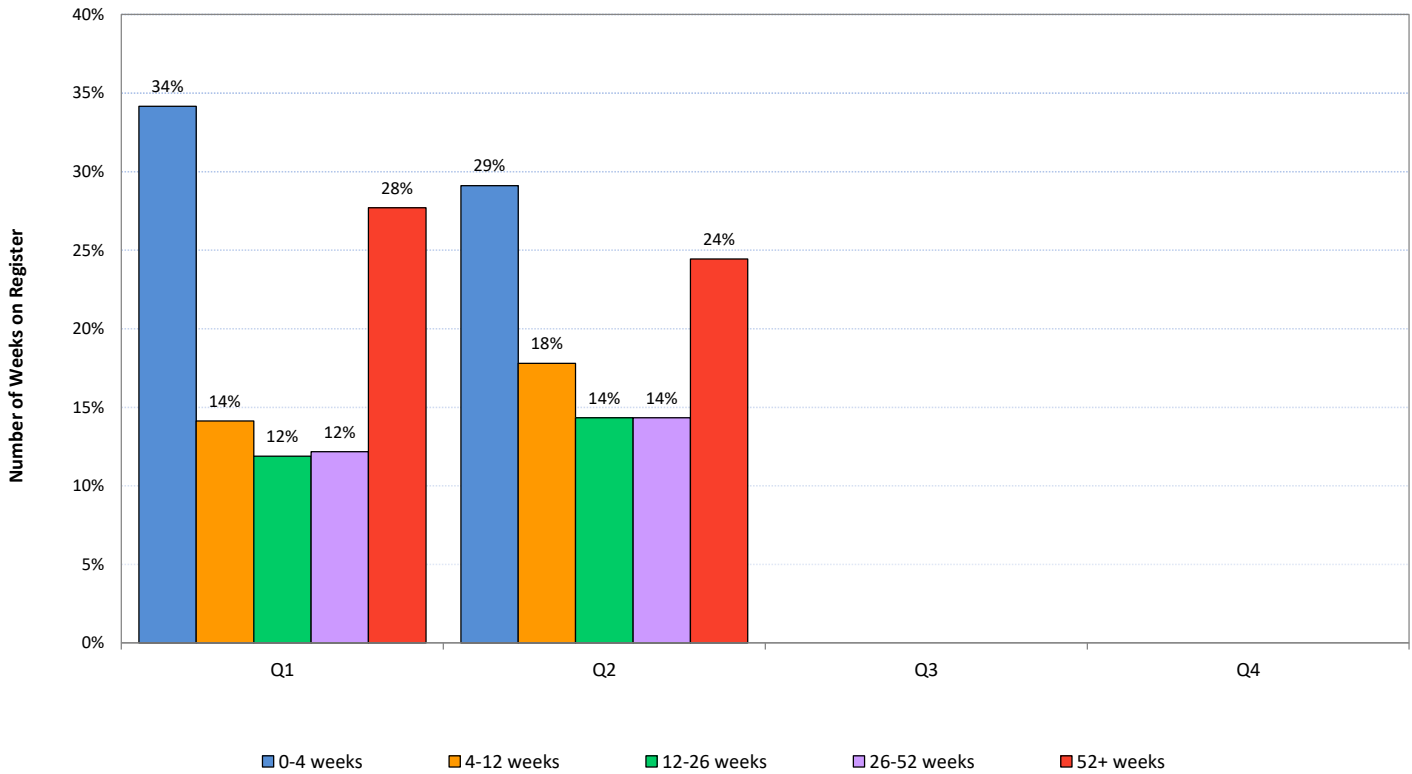
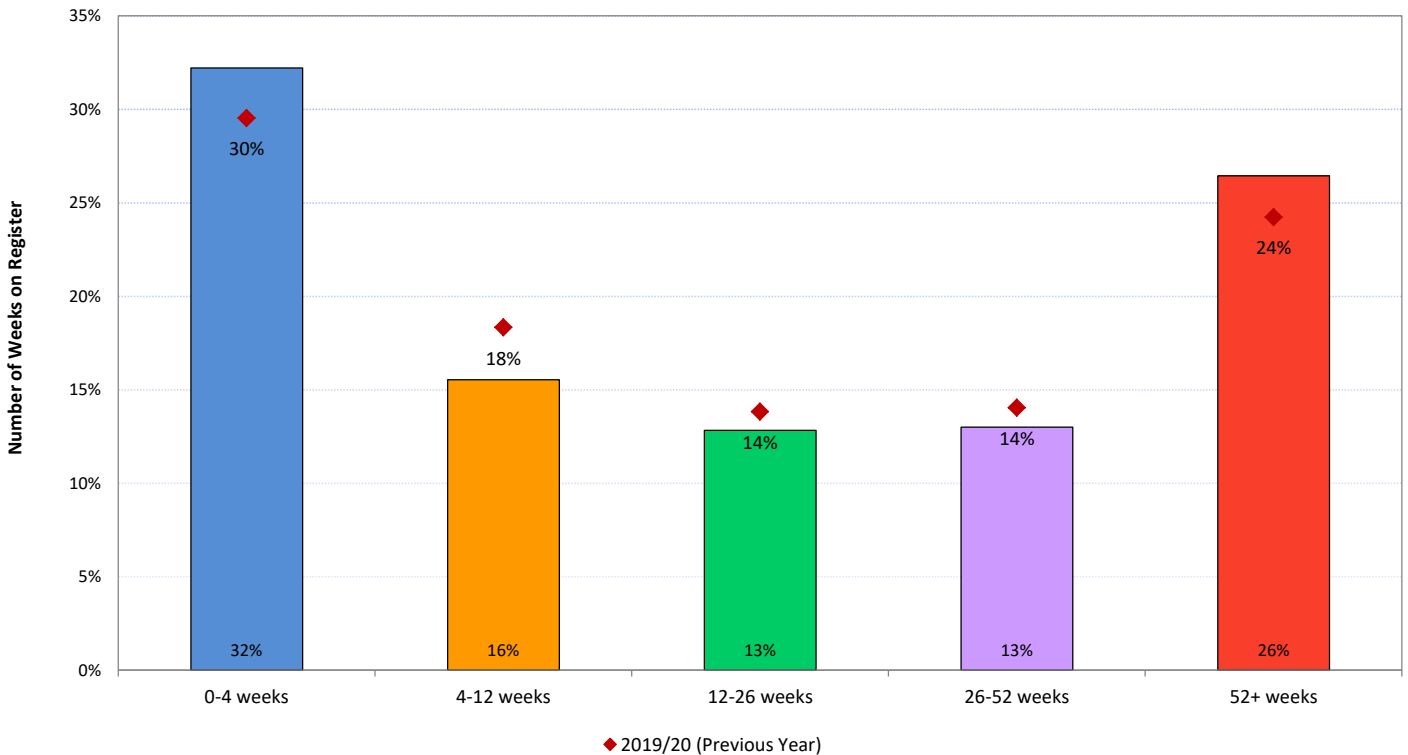


Chart - Duration of time (in weeks) the patients were on EPaCCS by CCG (as %age of CCG Total)

2020-21 (YTD) vs 2019-20



**Part 2 - Leeds Clinical Commissioning Group (CCG) EPaCCS Data
2020/21 Report (Q2)**

C2.8a Unplanned hospital usage (A&E and Non-Elective Admissions) by EPaCCS Patients in the last 90 days of their life.

Please note that the data below only relates to patients who have died in a particular quarter and looking back 90 days from their respective date of death.

The actual hospital visits/admissions could have taken place in a previous quarter i.e. a patient who died on 01 April 2020 may have accessed the hospital between Jan to Mar 2020

Activity and Cost Breakdown

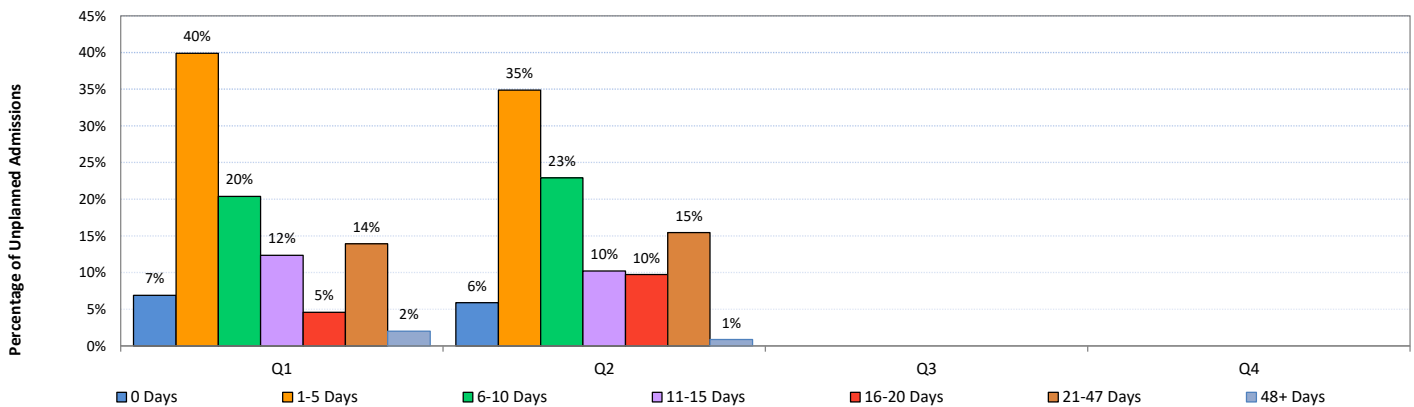
| | Q1 | | Q2 | | Q3 | | Q4 | | Total | |
|-----------------------------------|-----------------|-------------|-----------------|-------------|-----------------|-------------|-----------------|-------------|-----------------|-------------|
| A&E visits | Activity | Cost | Activity | Cost | Activity | Cost | Activity | Cost | Activity | Cost |
| Unique Patients | 456 | | 314 | | | | | | 770 | |
| Total Activity and Cost | 669 | £133,416 | 456 | £91,130 | | | | | 1125 | £224,546 |
| Average Activity and Cost | 1.5 | £293 | 1.5 | £290 | | | | | 1.5 | £292 |
| Planned Admissions (EL) | Activity | Cost | Activity | Cost | Activity | Cost | Activity | Cost | Activity | Cost |
| Unique Patients | 23 | | 17 | | | | | | 40 | |
| Total Activity and Cost | 25 | £89,822 | 18 | £32,218 | | | | | 43 | £122,040 |
| Average Activity and Cost | 1.1 | £3,905.30 | 1.1 | £1,895.18 | | | | | 1.1 | £3,051 |
| Unplanned Admissions (NEL) | Activity | Cost | Activity | Cost | Activity | Cost | Activity | Cost | Activity | Cost |
| Unique Patients | 495 | | 381 | | | | | | 876 | |
| Total Activity and Cost | 697 | £3,028,861 | 576 | £2,571,062 | | | | | 1273 | £5,599,923 |
| Average Activity and Cost | 1.4 | £6,119 | 1.5 | £6,748 | | | | | 1.5 | £6,393 |

Average and Median Number of Hospital Inpatient bed days/person in last 90 days of life

| | Q1 | | Q2 | | Q3 | | Q4 | |
|-----------------------------|----------------|---------------|----------------|---------------|----------------|---------------|----------------|---------------|
| Total Bed Days Elective | 152 | | 77 | | | | | |
| Total Bed Days Non-Elective | 7285 | | 6292 | | | | | |
| Total | 7437 | | 6369 | | | | | |
| | Average | Median | Average | Median | Average | Median | Average | Median |
| Elective Admissions | 6.6 | 3.0 | 4.5 | 1.0 | | | | |
| Non-Elective Admissions | 14.7 | 10.0 | 16.5 | 12.0 | | | | |
| All Inpatient Admissions | 14.8 | 10.0 | 16.5 | 12.0 | | | | |

Length of Stay Breakdown for Unplanned Admissions (Non-Elective Inpatient)

| | Q1 | | Q2 | | Q3 | | Q4 | | Total | |
|--|--------------------------|--|--------------------------|--|--------------------------|--|--------------------------|--|--------------------------|--|
| Length of Stay (Unplanned Admissions) | No. of Admissions | | No. of Admissions | | No. of Admissions | | No. of Admissions | | No. of Admissions | |
| 0 Days | 48 | | 34 | | | | | | 82 | |
| 1-5 Days | 278 | | 201 | | | | | | 479 | |
| 6-10 Days | 142 | | 132 | | | | | | 274 | |
| 11-15 Days | 86 | | 59 | | | | | | 145 | |
| 16-20 Days | 32 | | 56 | | | | | | 88 | |
| 21-47 Days | 97 | | 89 | | | | | | 186 | |
| 48+ Days | 14 | | 5 | | | | | | 19 | |
| | 697 | | 576 | | | | | | 1273 | |



Percentage of patients with 3 or more Unplanned Admissions (Non-Elective Inpatient)

| | Q1 | Q2 | Q3 | Q4 |
|-------------------------|----|----|----|----|
| %age against ALL EPaCCS | 4% | 6% | | |

**Part 2 - Leeds Clinical Commissioning Group (CCG) EPaCCS Data
2020/21 Report (Q2)**

C2.8b Reasons for Unplanned hospital usage (Non-Elective Admissions) by EPaCCS Patients in the last 90 days of their life.

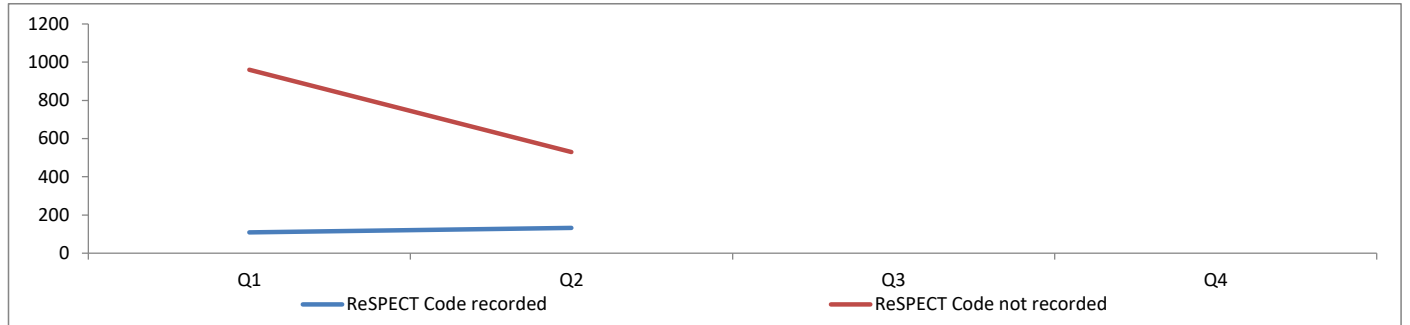
Top 5 Reasons for Unplanned Admissions (Year to Date)

| HRG Chapter | Primary Diagnosis | Q1 | Q2 | Q3 | Q4 |
|--|---|---------------|---------------|----|----|
| Respiratory System Procedures and Disorders | | 31.71% | 23.09% | | |
| | Diseases of the respiratory system | 16.21% | 16.49% | | |
| | Codes for special purposes | 9.18% | 0.00% | | |
| | Neoplasms | 4.73% | 5.38% | | |
| | Symptoms, signs and abnormal clinical and laboratory findings, not elsewhere classified | 0.86% | 0.35% | | |
| | Diseases of the circulatory system | 0.72% | 0.87% | | |
| Gastrointestinal Tract Disorders | | 11.05% | 13.19% | | |
| | Neoplasms | 4.45% | 3.99% | | |
| | Diseases of the digestive system | 3.73% | 4.51% | | |
| | Symptoms, signs and abnormal clinical and laboratory findings, not elsewhere classified | 1.29% | 2.08% | | |
| | Codes for special purposes | 0.72% | 1.04% | | |
| | Certain infectious and parasitic diseases | 0.43% | 1.04% | | |
| | Injury, poisoning and certain other consequences of external causes | 0.14% | 0.17% | | |
| | Diseases of the blood and blood-forming organs and certain disorders involving the immune mechanism | 0.14% | 0.17% | | |
| | Diseases of the skin and subcutaneous tissue | 0.14% | 0.17% | | |
| Nervous System Procedures and Disorders | | 7.17% | 6.08% | | |
| | Diseases of the circulatory system | 2.73% | 1.22% | | |
| | Neoplasms | 2.15% | 1.91% | | |
| | Diseases of the nervous system | 1.29% | 0.52% | | |
| | Symptoms, signs and abnormal clinical and laboratory findings, not elsewhere classified | 0.57% | 1.56% | | |
| | Injury, poisoning and certain other consequences of external causes | 0.43% | 0.87% | | |
| Cardiac Disorders | | 6.74% | 6.60% | | |
| | Diseases of the circulatory system | 5.60% | 6.25% | | |
| | Symptoms, signs and abnormal clinical and laboratory findings, not elsewhere classified | 0.86% | 0.35% | | |
| | Injury, poisoning and certain other consequences of external causes | 0.29% | 0.00% | | |
| Renal Procedures and Disorders | | 4.73% | 4.17% | | |
| | Diseases of the genitourinary system | 4.59% | 4.17% | | |
| | Injury, poisoning and certain other consequences of external causes | 0.14% | 0.00% | | |

Part 2 - Leeds Clinical Commissioning Group (CCG) EPaCCS Data 2020/21 Report (Q2)

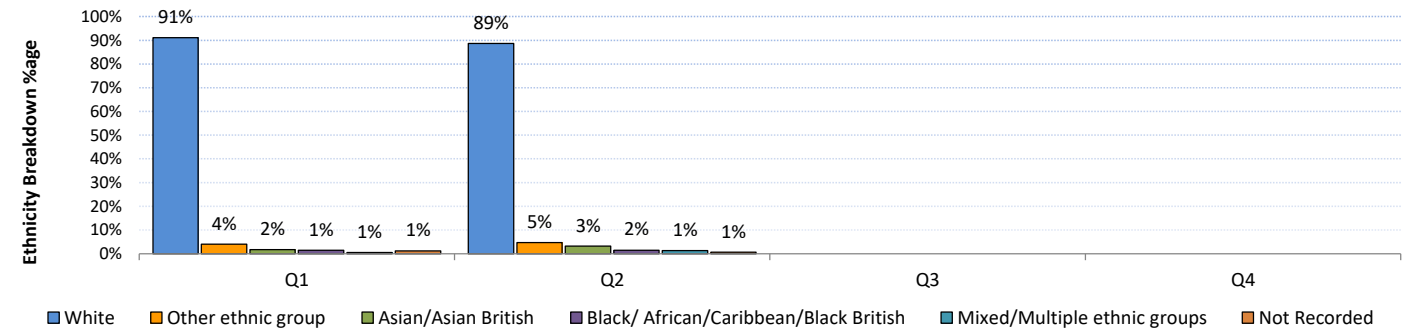
C2.9 EPaCCS patients who have a ReSPECT (Recommended Summary Plan for Emergency Care and Treatment) Code recorded on the system.

| Patients with ReSPECT Code | NHS Leeds CCG | | | |
|----------------------------|---------------|------------|----|----|
| | Q1 | Q2 | Q3 | Q4 |
| ReSPECT Code recorded | 109 | 133 | | |
| ReSPECT Code not recorded | 960 | 530 | | |
| Total | 1069 | 663 | | |



C2.10 Ethnicity Breakdown of EPaCCS patients

| Ethnicity Breakdown | NHS Leeds CCG | | | |
|--|---------------|------------|----|----|
| | Q1 | Q2 | Q3 | Q4 |
| White | 974 | 588 | | |
| Other ethnic group | 43 | 31 | | |
| Asian/Asian British | 18 | 21 | | |
| Black/ African/Caribbean/Black British | 15 | 10 | | |
| Mixed/Multiple ethnic groups | 6 | 9 | | |
| Not Recorded | 13 | 4 | | |
| Total | 1069 | 663 | | |



Ethnicity Breakdown comparison of current 2020/21 Year to Date data with 2019/20

