



EPaCCS Outcome Report

NHS Leeds CCG

2020/21 Report (Q1) - CCG Level

Data Source : SystemOne and EMIS

Data Provided by : Health Care Hub (Leeds), Leeds Community Healthcare, St Gemma's Hospice, Sue Ryder
Wheatfields Hospice and Data Quality Team (NHS Leeds CCG)

Report Compiled by : Business Intelligence Team, NHS Leeds CCG

	Page
Summary	3
Part 1 - GP Practice EPaCCS Data	
C1.1a Patients who died and were included on EPaCCS - NHS Leeds CCG (Part 1 of 2)	4
C1.1b Patients who died and were included on EPaCCS - NHS Leeds CCG (Part 2 of 2)	5
C1.2a Percentage of Patients on EPaCCS who have achieved Preferred Place of Death - NHS Leeds CCG (Part 1 of 2)	6
C1.2b Percentage of Patients on EPaCCS who have achieved Preferred Place of Death - NHS Leeds CCG (Part 2 of 2)	7
Part 2 - Leeds CCGs EPaCCS Data	
C2.1 Total patient deaths in and out of hospital and total deaths by CCG	8
C2.2 Patients with a Cancer Diagnosis recorded for 2020/21 Report (Q1) compared with previous year.	8
C2.3 Patients who died and were included on EPaCCS	8
C2.4 Preferred place of death recorded by CCG	9
C2.5 Actual place of death recorded by CCG	9
C2.6 Preferred Place of Death Achieved (First Choice) by Leeds CCG EPaCCS patients	10
C2.7 Duration of time (in weeks) the patients were on EPaCCS (Leeds City wide)	11
C2.8a Unplanned hospital usage (A&E and Non-Elective Admissions) by EPaCCS Patients in the last 90 days of their life.	12
C2.8b Reasons for Unplanned hospital usage (Non-Elective Admissions) by EPaCCS Patients in the last 90 days of their life.	13

EPaCCS Outcome Report

The Electronic Palliative Care Coordination System (EPaCCS) is an electronic record that supports advance care planning conversations and improves the coordination of care for people approaching the end of life.

It provides a summary of key recommendations, preferences and information essential to the high quality care for patients with palliative care needs and those choosing to plan ahead, irrespective of prognosis. Local and national data shows that when patients are given the opportunity to discuss and share their preferences they are more likely to achieve their end of life care goals.

This is a 2020/21 annual Leeds EPaCCS report, combining SystemOne and EMIS data for patients registered from all the practices across Leeds. To ensure a comprehensive view of advance care planning it collates EPaCCS data entered by all relevant care providers: Leeds Community Healthcare community services, hospice services, community palliative care teams in addition to primary care.

These EPaCCS reports have been produced to enable you to reflect on end of life care in your practice.

Key findings of the 2020/21 Report (Q1) report are:

- ◆ 54% of adults who died in Leeds had an EPaCCS record compared to 49% the previous year.
- ◆ 85% achieved their preferred place of death this year compared to 79% last year; with 70% dying outside of hospital compared to 68% last year.
- ◆ The proportion of patients whose EPaCCS record was started more than 3 months before they died is at 52% at par when compared to 52% the previous year.
- ◆ The proportion of patients without an actual place of death recorded has increased to 18% from 12% last year.

This report covers a period of unprecedented demand across the health and social care environment: particularly given the impact of **COVID-19** on the system. It is a considerable achievement the proportion of patients being supported in their preferred place has been maintained whilst the overall proportion of people with an EPaCCS record has increased. This marks a sustained improvement on 2016-2017 when 33% of adults who died had an EPaCCS record.

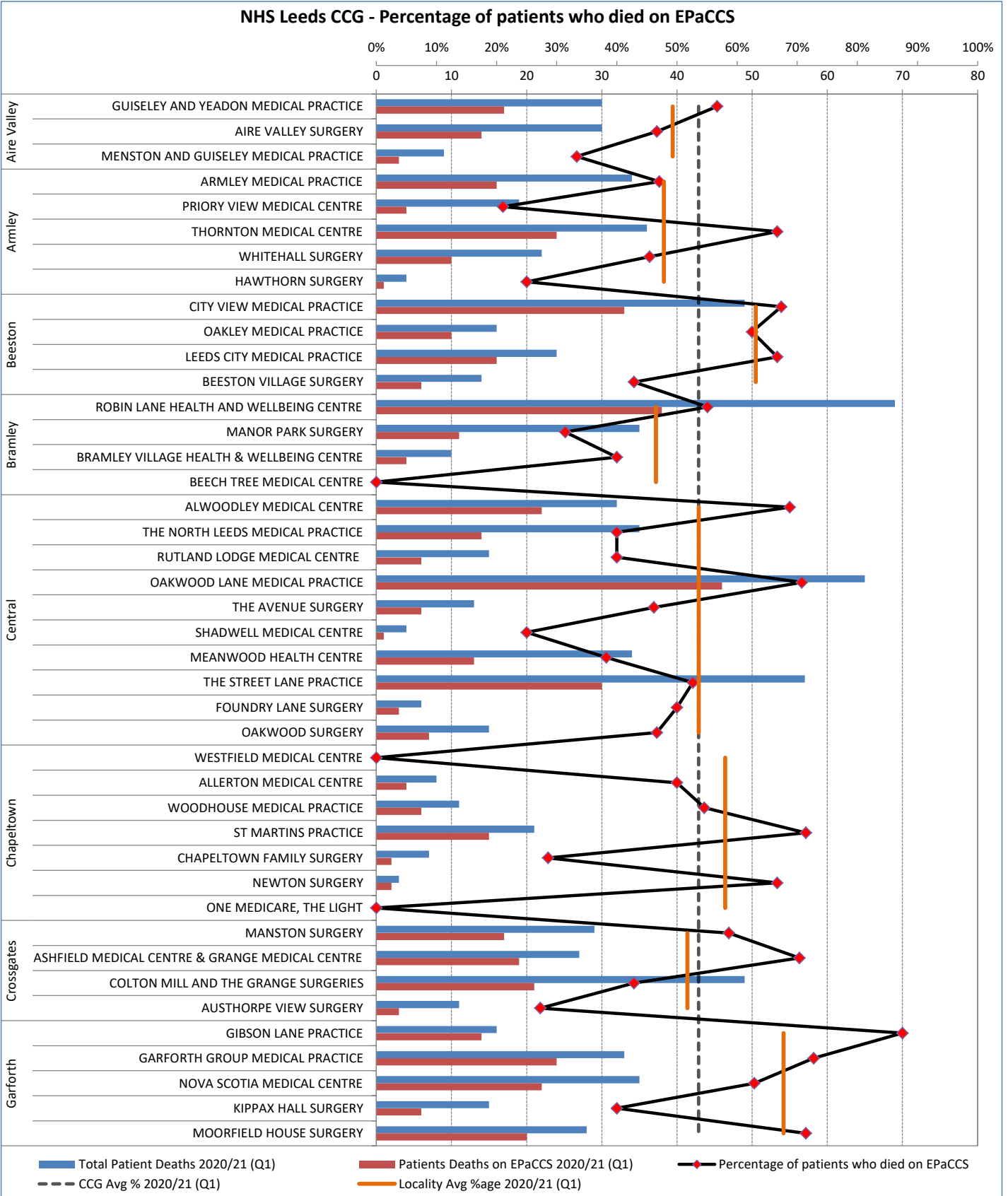
The findings show that a greater proportion of people are being given opportunities to discuss, document and share their care preferences at an earlier stage and demonstrate improved data quality.

Part 1 - GP Practice EPaCCS Data 2020/21 Report (Q1)

NHS Leeds CCG

C1.1a Patients who died and were included on EPaCCS - NHS Leeds CCG (Part 1 of 2)

	Q1	Q2	Q3	Q4	Total
a. Number of All patient deaths?	1995				1995
b. Number of patients deaths on EPaCCS?	1069				1069
c. % of patient deaths on EPaCCS?	54%				54%

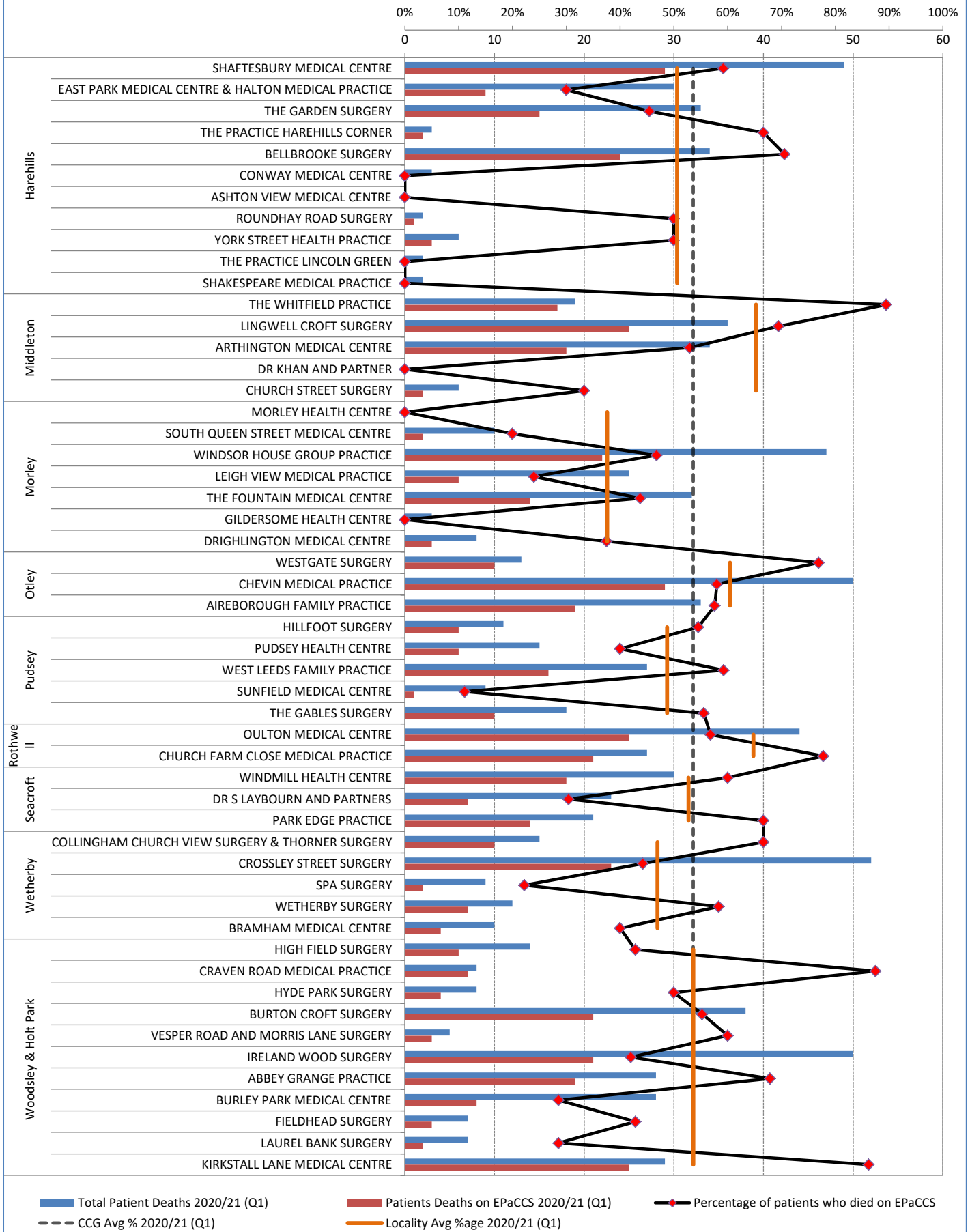


Part 1 - GP Practice EPaCCS Data
2020/21 Report (Q1)

NHS Leeds CCG

C1.1b Patients who died and were included on EPaCCS - NHS Leeds CCG (Part 2 of 2)

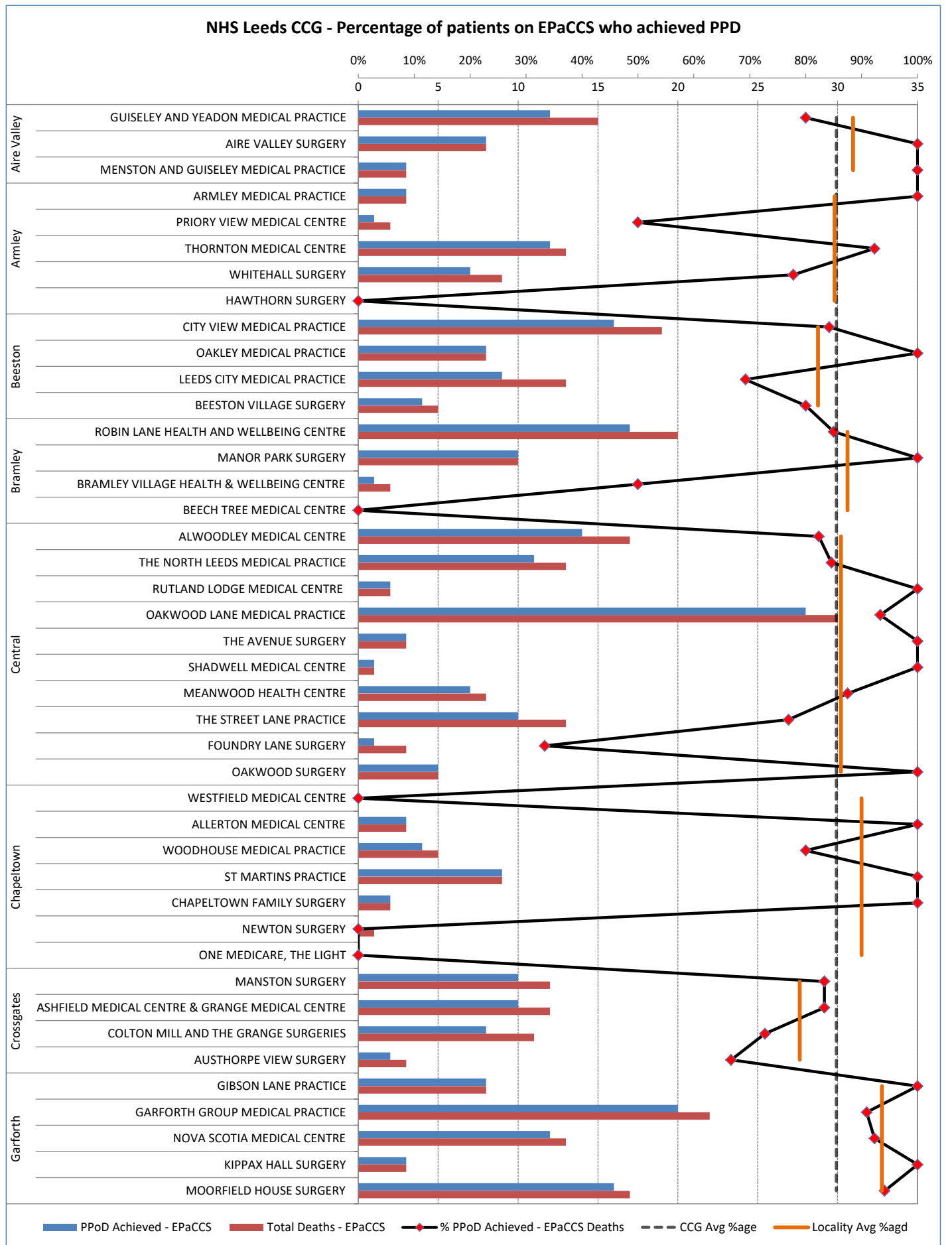
NHS Leeds CCG - Percentage of patients who died on EPaCCS



Part 1 - GP Practice EPaCCS Data
2020/21 Report (Q1)

NHS Leeds CCG

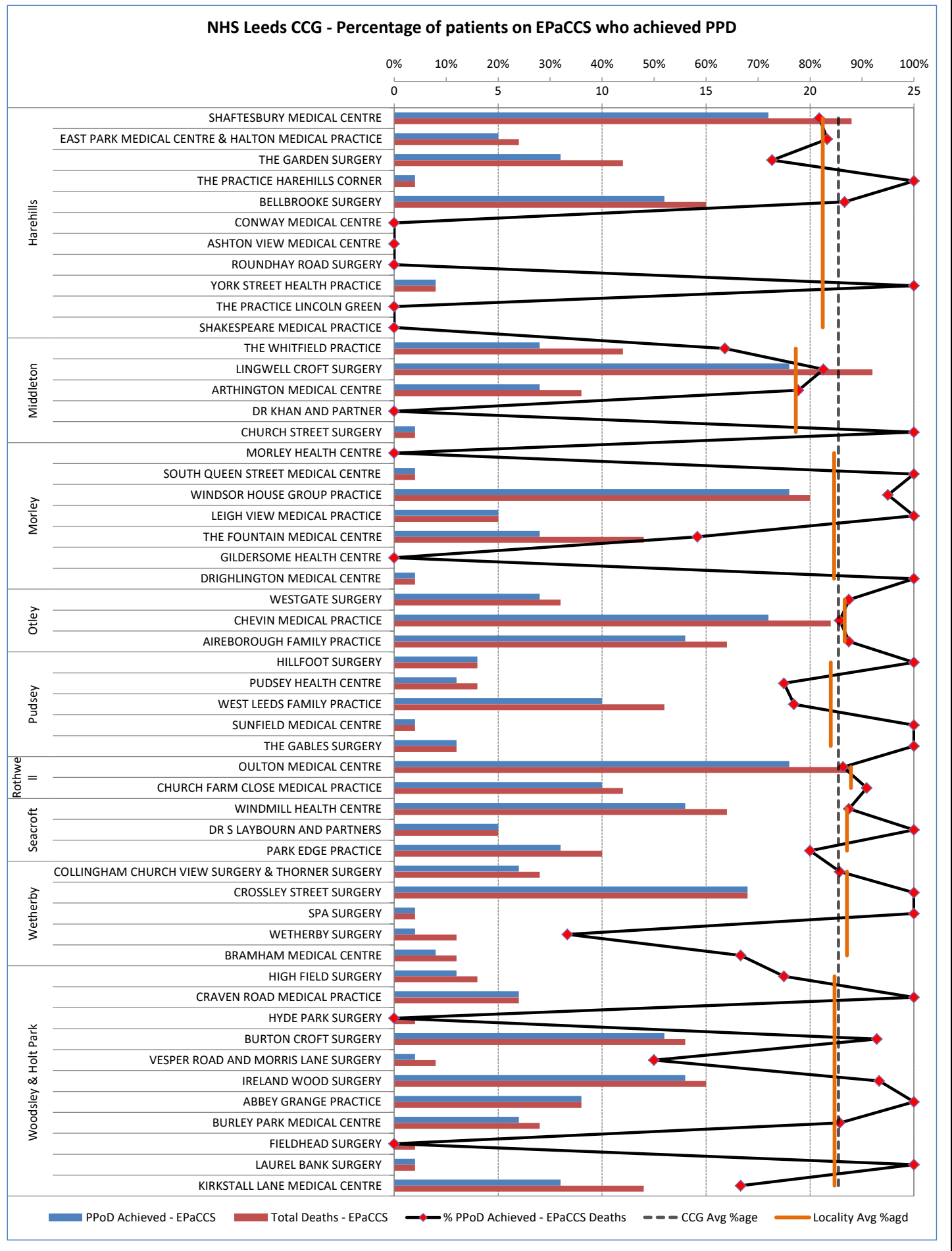
C1.2a Percentage of Patients on EPaCCS who have achieved Preferred Place of Death - NHS Leeds CCG (Part 1 of 2)



Part 1 - GP Practice EPaCCS Data
2020/21 Report (Q1)

NHS Leeds CCG

C1.2b Percentage of Patients on EPaCCS who have achieved Preferred Place of Death - NHS Leeds CCG (Part 2 of 2)

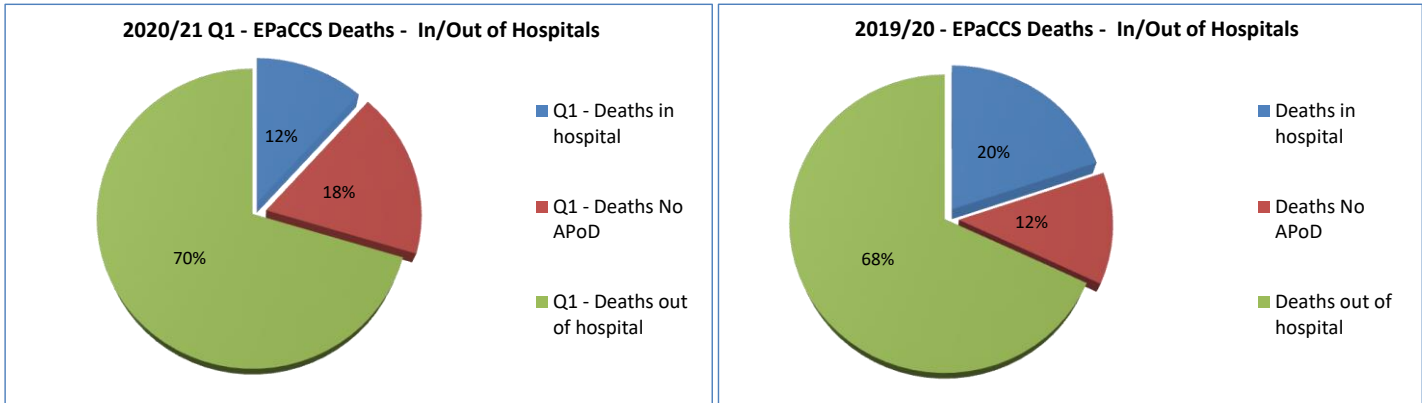


Part 2 - Leeds Clinical Commissioning Group (CCG) EPaCCS Data 2020/21 Report (Q1)

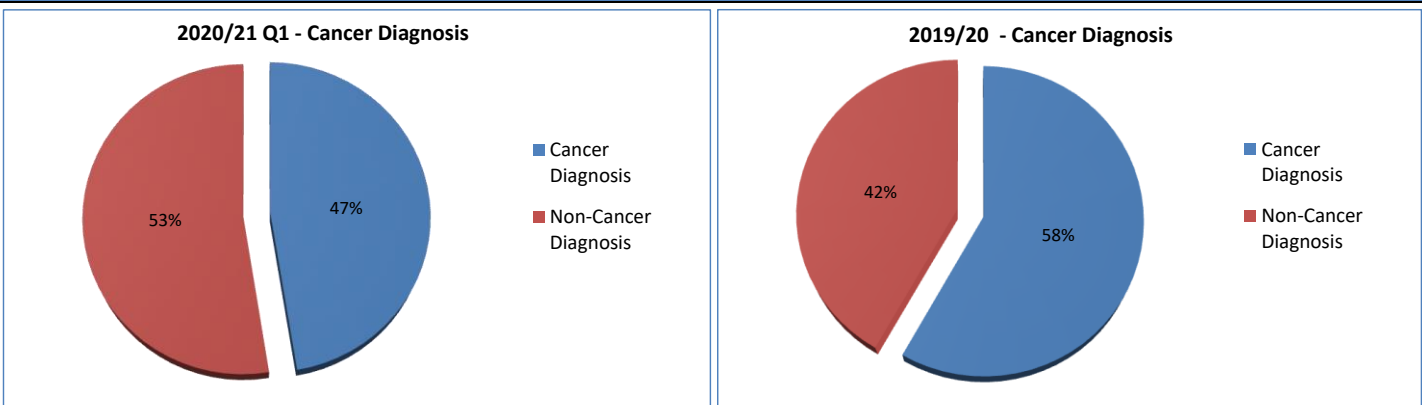
C2.1 Total patient deaths in and out of hospital and total deaths by CCG

	Q1		Q2		Q3		Q4		Total	
	EPaCCS		EPaCCS		EPaCCS		EPaCCS		EPaCCS	
1. Total deaths in hospital?	125	12%							125	12%
2. Total deaths out of hospital?	752	70%							752	70%
3. Total number of deaths with No APoD	192	18%							192	18%
4. Total number of deaths in Leeds CCG	All	EPaCCS	All	EPaCCS	All	EPaCCS	All	EPaCCS	All	EPaCCS
	1995	1069							1995	1069

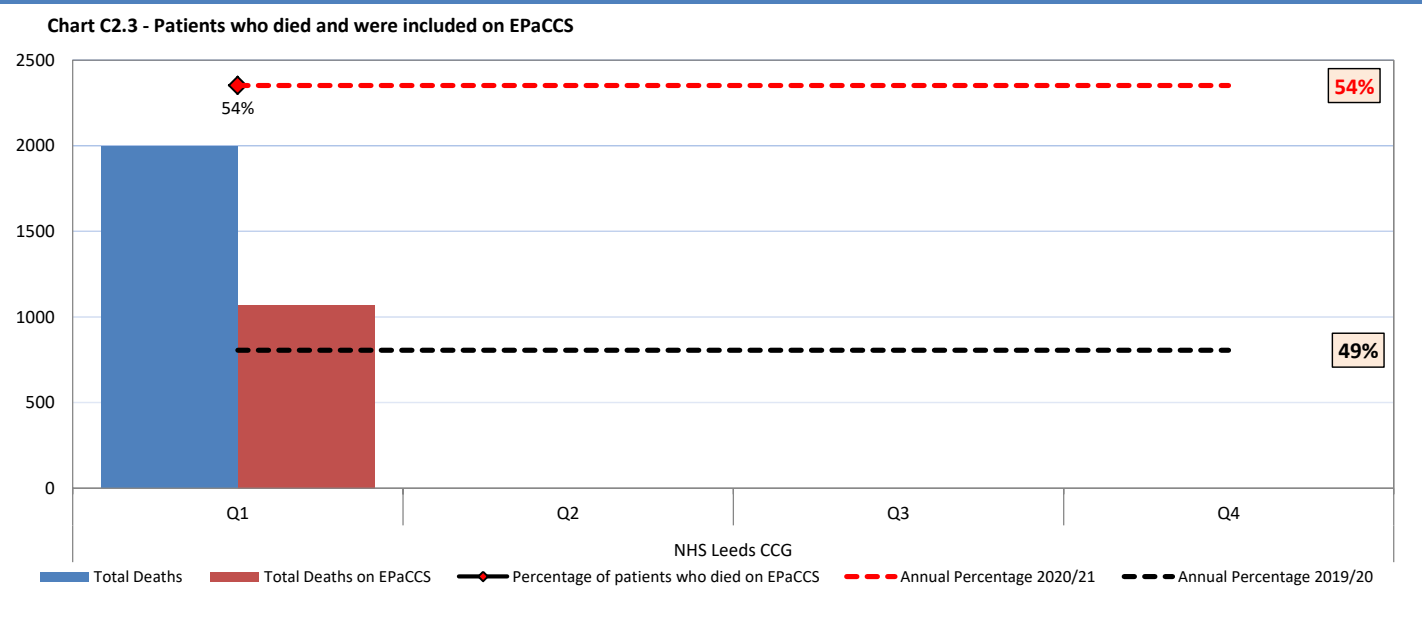
Chart C2.1a - Percentage deaths in hospital / out of hospital for 2020/21 Report (Q1) compared with previous year.



C2.2 Patients with a Cancer Diagnosis recorded for 2020/21 Report (Q1) compared with previous year.



C2.3 Patients who died and were included on EPaCCS

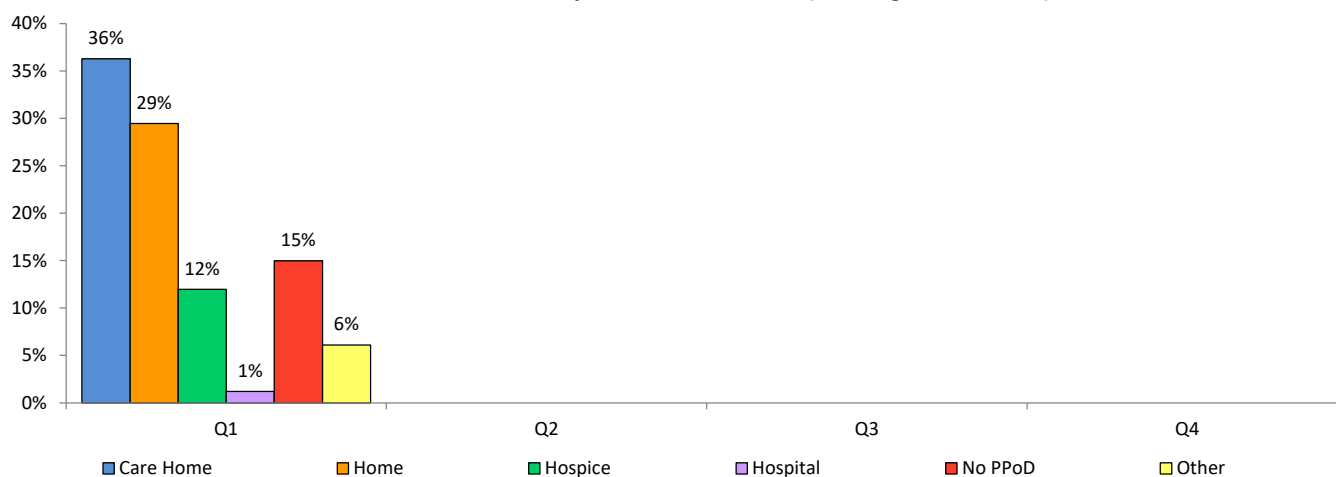


Part 2 - Leeds Clinical Commissioning Group (CCG) EPaCCS Data 2020/21 Report (Q1)

C2.4 Preferred place of death recorded by CCG

		NHS Leeds CCG			
	Preferred Place of Death	Q1	Q2	Q3	Q4
1	Care Home	388			
2	Home	315			
3	Hospice	128			
4	Hospital	13			
5	No PPOD (preferred place of death)	160			
6	Other	65			
	Total	1069			

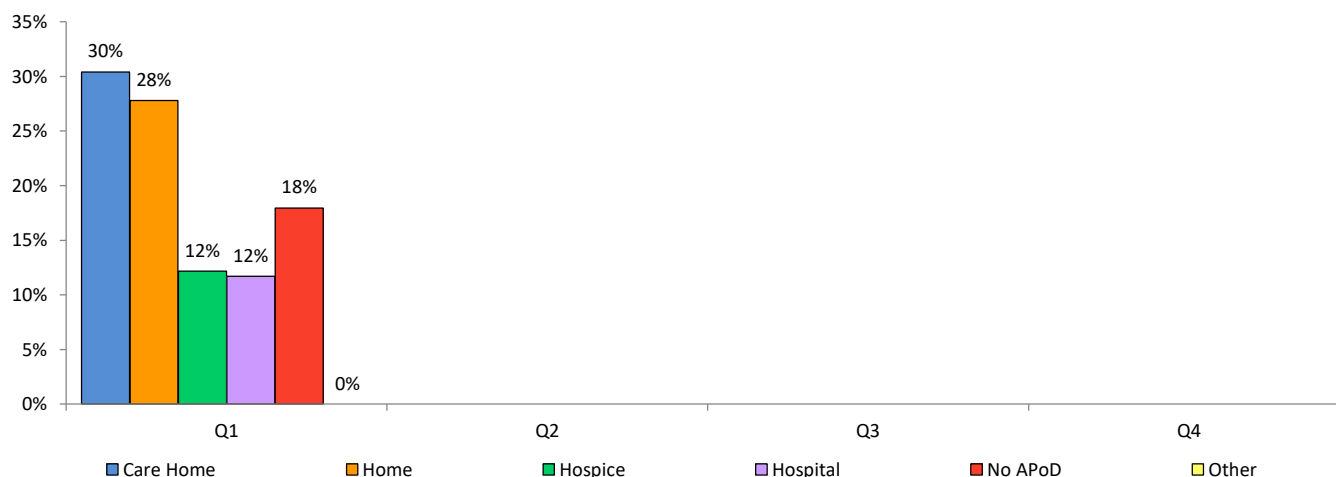
Preferred Place of Death by CCG - EPaCCS Deaths (as a %age of CCG Total)



C2.5 Actual place of death recorded by CCG

		NHS Leeds CCG			
	Actual Place of Death	Q1	Q2	Q3	Q4
1	Care Home	325			
2	Home	297			
3	Hospice	130			
4	Hospital	125			
5	No APoD (actual place of death)	192			
6	Other	0			
	Total	1069			

Actual Place of Death by CCG - EPaCCS Deaths (as a %age of CCG Total)

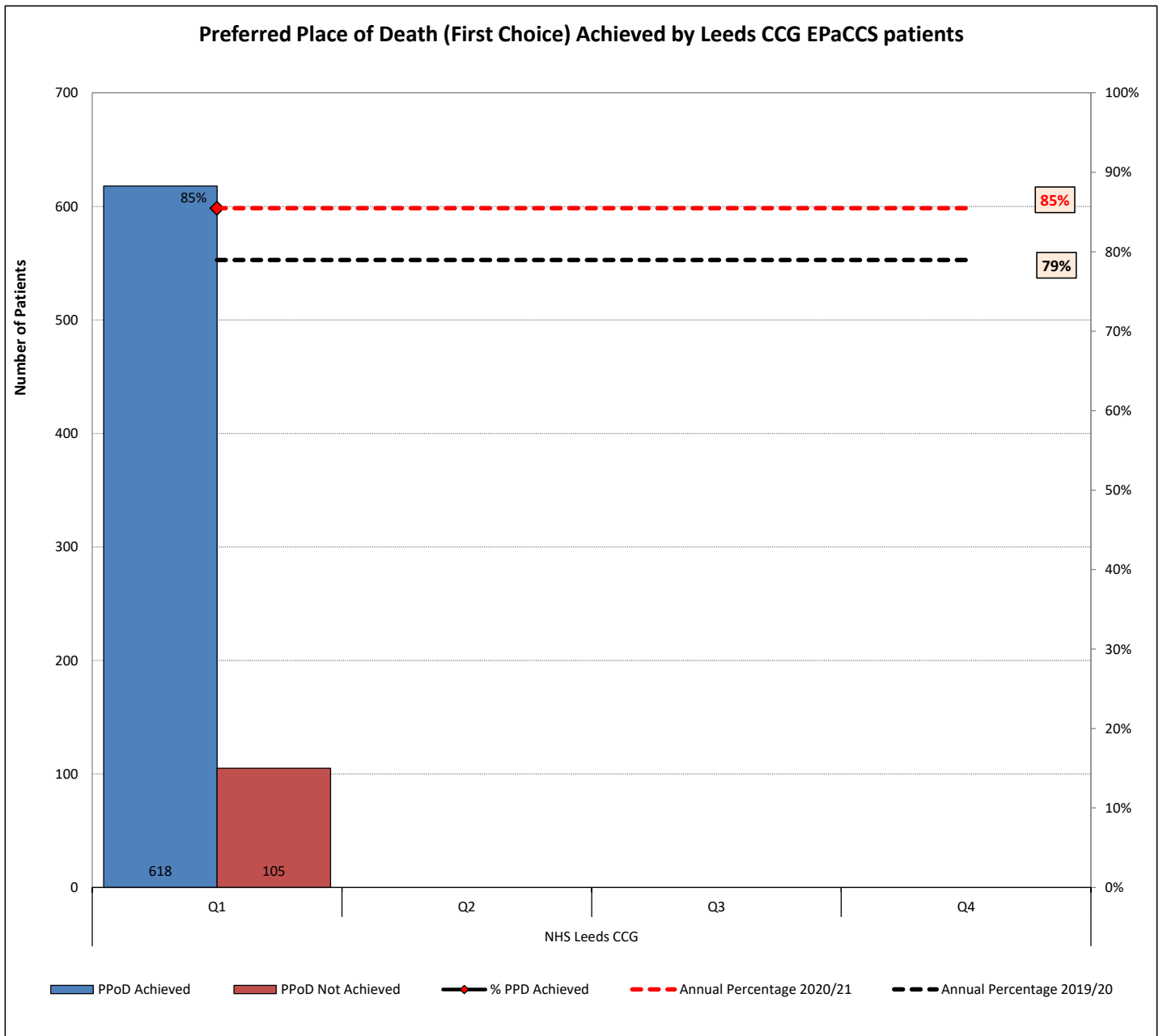


Part 2 - Leeds Clinical Commissioning Group (CCG) EPaCCS Data 2020/21 Report (Q1)

C2.6 Preferred Place of Death Achieved (First Choice) by Leeds CCG EPaCCS patients

CCG	Qtr	PPoD Achieved	PPoD Not Achieved	% PPD Achieved
NHS Leeds CCG	Q1	618	105	85%
	Q2			
	Q3			
	Q4			
	Total	618	105	85%

NOTE: Only patients with both PPoD and APoD recorded are included in this analysis



Part 2 - Leeds Clinical Commissioning Group (CCG) EPaCCS Data 2020/21 Report (Q1)

C2.7 Duration of time (in weeks) the patients were on EPaCCS (Leeds City wide)

Chart - Duration of time (in weeks) the patients were on EPaCCS by Quarter (as %age of CCG Total)

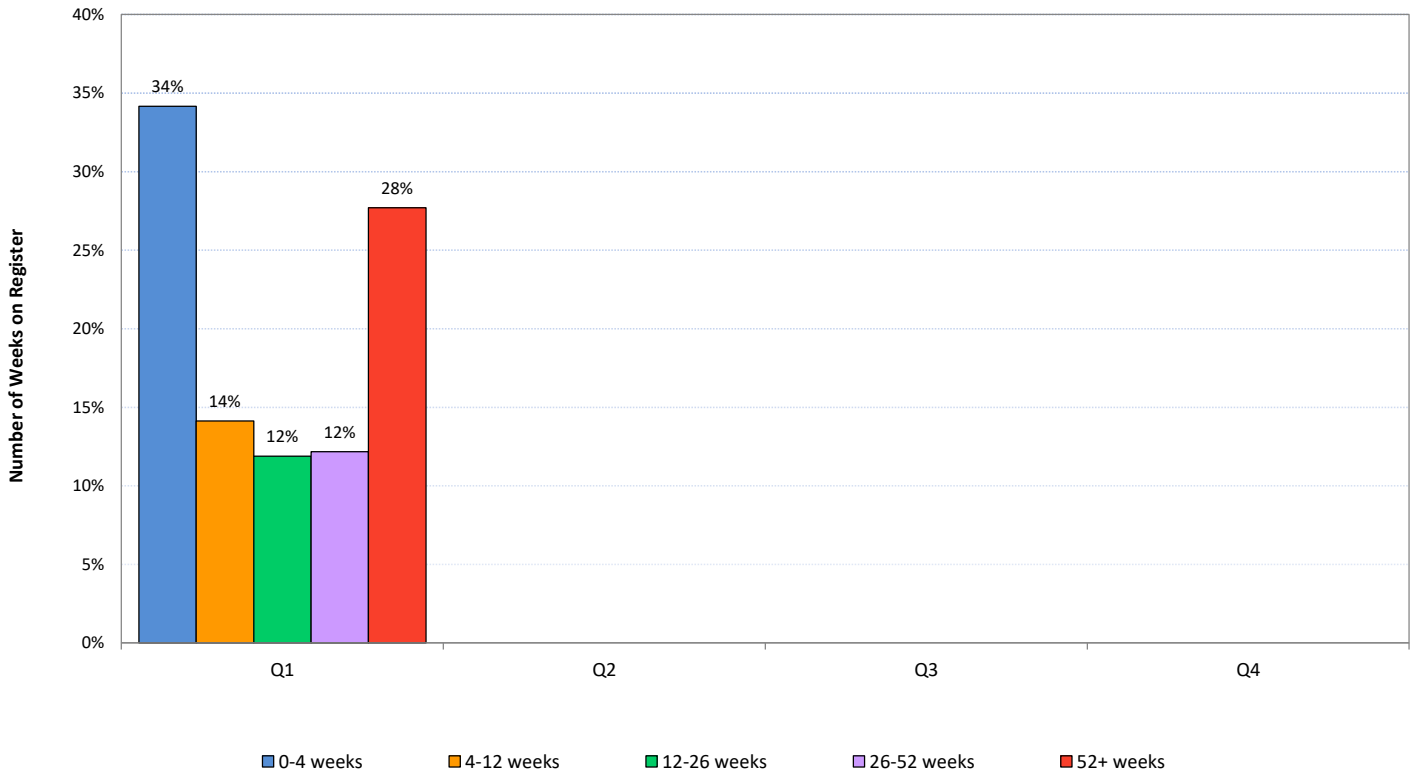
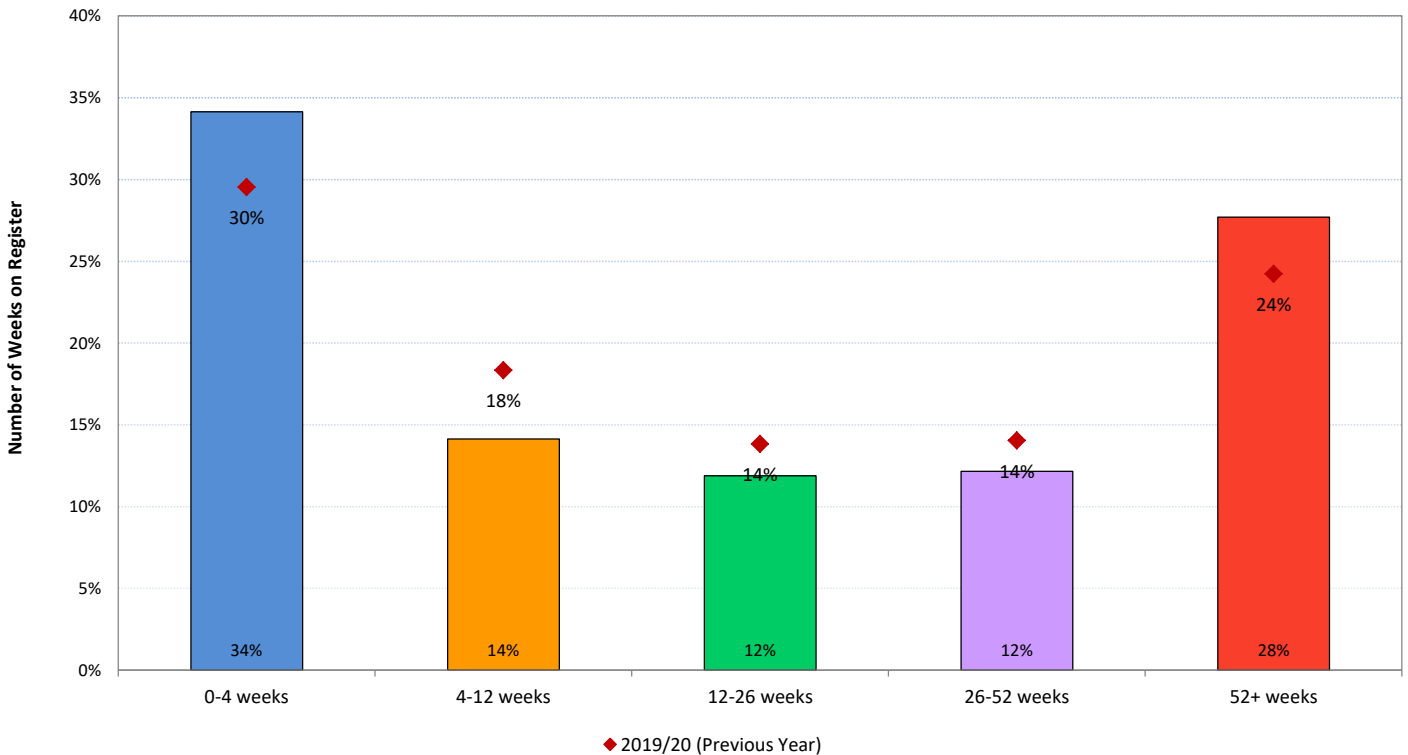


Chart - Duration of time (in weeks) the patients were on EPaCCS by CCG (as %age of CCG Total)

2020-21 (YTD) vs 2019-20



**Part 2 - Leeds Clinical Commissioning Group (CCG) EPaCCS Data
2020/21 Report (Q1)**

C2.8a Unplanned hospital usage (A&E and Non-Elective Admissions) by EPaCCS Patients in the last 90 days of their life.

Please note that the data below only relates to patients who have died in a particular quarter and looking back 90 days from their respective date of death.

The actual hospital visits/admissions could have taken place in a previous quarter i.e. a patient who died on 01 April 2020 may have accessed the hospital between Jan to Mar 2020

Activity and Cost Breakdown

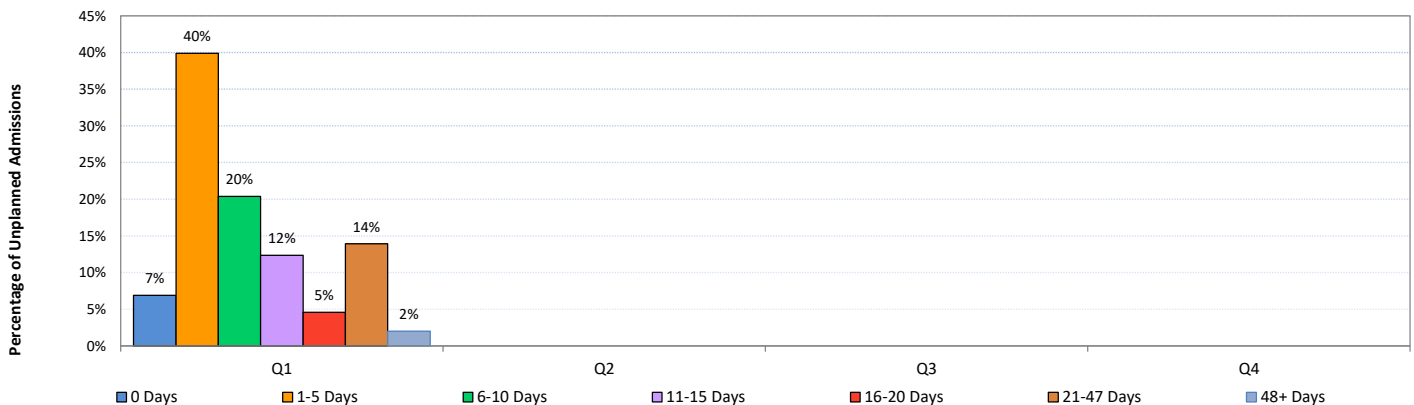
	Q1		Q2		Q3		Q4		Total	
A&E visits	Activity	Cost	Activity	Cost	Activity	Cost	Activity	Cost	Activity	Cost
Unique Patients	456								456	
Total Activity and Cost	669	£133,416							669	£133,416
Average Activity and Cost	1.5	£293							1.5	£293
Planned Admissions (EL)	Activity	Cost	Activity	Cost	Activity	Cost	Activity	Cost	Activity	Cost
Unique Patients	23								23	
Total Activity and Cost	25	£89,822							25	£89,822
Average Activity and Cost	1.1	£3,905.30							1.1	£3,905
Unplanned Admissions (NEL)	Activity	Cost	Activity	Cost	Activity	Cost	Activity	Cost	Activity	Cost
Unique Patients	495								495	
Total Activity and Cost	697	£3,028,861							697	£3,028,861
Average Activity and Cost	1.4	£6,119							1.4	£6,119

Average and Median Number of Hospital Inpatient bed days/person in last 90 days of life

	Q1		Q2		Q3		Q4	
Total Bed Days Elective	152							
Total Bed Days Non-Elective	7285							
Total	7437							
	Average	Median	Average	Median	Average	Median	Average	Median
Elective Admissions	6.6	3.0						
Non-Elective Admissions	14.7	10.0						
All Inpatient Admissions	14.8	10.0						

Length of Stay Breakdown for Unplanned Admissions (Non-Elective Inpatient)

	Q1	Q2	Q3	Q4	Total
Length of Stay (Unplanned Admissions)	No. of Admissions	No. of Admissions	No. of Admissions	No. of Admissions	No. of Admissions
0 Days	48				48
1-5 Days	278				278
6-10 Days	142				142
11-15 Days	86				86
16-20 Days	32				32
21-47 Days	97				97
48+ Days	14				14
	697				697



Percentage of patients with 3 or more Unplanned Admissions (Non-Elective Inpatient)

	Q1	Q2	Q3	Q4
3 or more	8%			
4 or more	2%			

**Part 2 - Leeds Clinical Commissioning Group (CCG) EPaCCS Data
2020/21 Report (Q1)**

C2.8b Reasons for Unplanned hospital usage (Non-Elective Admissions) by EPaCCS Patients in the last 90 days of their life.

Top 5 Reasons for Unplanned Admissions (Year to Date)

HRG Chapter	Primary Diagnosis	Q1	Q2	Q3	Q4
Respiratory System Procedures and Disorders		31.71%			
	Diseases of the respiratory system	16.21%			
	Codes for special purposes	9.18%			
	Neoplasms	4.73%			
	Symptoms, signs and abnormal clinical and laboratory findings, not elsewhere classified	0.86%			
	Diseases of the circulatory system	0.72%			
Gastrointestinal Tract Disorders		11.05%			
	Neoplasms	4.45%			
	Diseases of the digestive system	3.73%			
	Symptoms, signs and abnormal clinical and laboratory findings, not elsewhere classified	1.29%			
	Codes for special purposes	0.72%			
	Certain infectious and parasitic diseases	0.43%			
	Injury, poisoning and certain other consequences of external causes	0.14%			
	Diseases of the blood and blood-forming organs and certain disorders involving the immune mechanism	0.14%			
	Diseases of the skin and subcutaneous tissue	0.14%			
Nervous System Procedures and Disorders		7.17%			
	Diseases of the circulatory system	2.73%			
	Neoplasms	2.15%			
	Diseases of the nervous system	1.29%			
	Symptoms, signs and abnormal clinical and laboratory findings, not elsewhere classified	0.57%			
	Injury, poisoning and certain other consequences of external causes	0.43%			
Cardiac Disorders		6.74%			
	Diseases of the circulatory system	5.60%			
	Symptoms, signs and abnormal clinical and laboratory findings, not elsewhere classified	0.86%			
	Injury, poisoning and certain other consequences of external causes	0.29%			
Renal Procedures and Disorders		4.73%			
	Diseases of the genitourinary system	4.59%			
	Injury, poisoning and certain other consequences of external causes	0.14%			